



Solomon Islands Government

Statistical Bulletin: No: 8/2012

VISITOR STATISTICS

(First Quarter 2012)

Solomon Islands National Statistics Office

Ministry of Finance

Honiara

TABLE OF CONTENTS

Introduction.....	3
COMMENTARY OF RESULTS	5
<i>International Arrivals</i>	5
<i>Arrivals by Country of Residence</i>	5
<i>Visitor by Month</i>	5
<i>Tourists</i>	5
<i>Visitors by Purpose of Visit</i>	5
<i>Visitor by Age Group</i>	5
<i>Visitor by Occupation:</i>	5
<i>Visitor by Carrier</i>	5

Charts

Chart 1: Arrivals by Category, 1 st Quarter 2012	6
Chart 2: Visitor Arrivals by Country of Residence by quarter: 1st Quarter 2012.....	7
Chart 3: Visitor Arrivals by Month, 2007 to 1st Quarter 2012	8
Chart 4: Tourist Arrivals by Country of Residence, 1st Quarter 2012.....	9
Chart 5: Visitor Arrivals by Country of Residence by Purpose of Visit, 1st Quarter 2012.....	10
Chart 6: Visitor Arrivals by Age group category by sex, 1st Quarter 2012.....	11
Chart 7: Visitor Arrivals by Occupation by sex, 1st Quarter 2012.....	12
Chart 8: Visitor Arrivals by Carrier by sex, 1st Quarter 2012.....	13

Tables

Table 1: Total Arrivals Classified by Purpose of Travel by Sex by Year by Quarter: 1st Quarter 2012	6
Table 2: Visitors Arrivals by Country of Residence by Year by Quarter: 1st Quarter 2012.....	7
Table 3: Visitors Arrivals by Month: 2006 to 1st Quarter 2012	8
Table 4: Visitors Classified as Tourists by Country of Residence by Year, Quarter and Average Length	9
of Stay: 2 nd quarter 2009 to 1 st Quarter 2012	9
Table 5: Visitor Arrivals by Country of Residence by Purpose of Visit by sex: 1 st Quarter 2012.....	10
Table 6: Visitors Arrivals by Country of Residence by Age Groups by sex: 1 st Quarter 2012.....	11
Table 7: Visitors Arrivals by Country of Residence by Occupation and Sex: 1 st Quarter 2012	12
Table 8: Visitors Arrivals by Country of Residence by Carrier By Sex: 1 st Quarter 2012.....	13

Appendix 1	14
<i>Concepts and Definitions</i>	14
Appendix 2.....	15

Table 9: Intending Resident Arrivals by Country of residence by Occupation and sex: 1 st Quarter 2012.....	15
Table 10: Intending Resident Arrivals by country of Residence by Age Groups by Sex: 1 st Quarter 2012.....	16
Table 11: Returning Resident Arrivals by country of Residence by Occupation and sex: 1 st Quarter 2012.....	17
Table 12: Returning Resident Arrivals by country of Residence by Age Groups and sex: 1 st Quarter 2012.....	18

Introduction

This quarterly bulletin is produced by the National Statistics Office NSO in the Ministry of Finance and Treasury. It provides information on international arrivals comprised of the returning resident, intending resident, and visitor. The explanation of these categories is provided in Appendix 1 of the bulletin.

Visitor category comprised the bigger share of the bulletin, (portrayed in tables 1 to 8); compared to the returning and intending resident category portrayed in Tables 1, and 9 to 12. The bulletin includes twelve tables and eight charts stretched over cross-field tabulation, preferably to meet information need of local, regional, and international researchers.

The information captured through a self fill Disembarkation form that was completed by all disembarking passengers. The forms were collected by Immigration officials at international check-in counters on arrival. The coverage of the bulletin is complete.

Sheer acknowledgement is owed to the Immigration Department for their continuous support of this bulletin, by providing an office space and permitting the statistics office to input completed forms. With the official arrangement in-placed between the Statistics and Immigration departments this bulletin is possible.

The inclusion of four new tables 9 to 12 in Appendix 2 of the bulletin anticipates to complete the distribution portrait of Intending and Returning resident. The distribution is by age groups, occupation and by country of usual residence.

Data limitations, highlighted in the previous bulletin still remain, though some have substantially improved but noted again for ease of reference as follows:-

- Data entry duplication by the Immigration and Statistics departments was a long standing issue. Discussion of the issues had been made by the two departments, though resolution has been recognized, this was yet to be put in place.
- Timeliness of visitor statistics has improved but the bulletin may be delayed by the production process.
- The information contained in the bulletin is based on information captured from the data source by the SINSO.
- The monetary value of the industry is not available and thus not possible in this bulletin. The concepts and definitions of the arrival categories were included in Appendix 1. The symbols that are likely to be used are:

-	zero if representing a value
-	negative change if representing a percentage change
+	positive change if representing a percentage change
p	preliminary figure, subject to revision
r	revised
e	estimate
n/a	not available

For more information contact the Statistics Office, Department of Finance and Treasury:

TELEPHONE : (677) 27835

FACSMILE : (677) 23775

E-MAIL : STATS-management@mof.gov.sb

: STATS-SocialDemography@mof.gov.sb

WEBSITE : <http://www.spc.int/prism/country/sb/stats> (This website is currently in the redesigning process - thus this update is no uploaded on this site).

Contact persons: 1. Mrs. Irene KALAUMA, Principal Statistician
 2. Mrs. Anterlyn TUZAKANA, Senior Statistician

COMMENTARY OF RESULTS

International Arrivals

Total Arrivals for the first quarter of 2012 was 8,994. This showed a decrease of 26.4% compared to the previous quarter (4th Quarter 2011). Compared to the same quarter last year, it showed a decrease of 5.1%. Arrivals classified by the category for the first quarter of 2012 showed that returning resident comprise of 32% while intending resident 16% and visitor 52%.

Visitor arrivals for the first quarter showed a decrease of 23.4% to 4,651 compared to the fourth quarter 2011 figure of 6,073. Compared to the same quarter in 2011 it showed a decrease of 9.1%. Table 1 showed, visitor and returning resident categories comprised the larger proportion of all arrivals while the intending resident represents the lesser share during the quarter. Chart 1, gives a clear picture of all the categories.

Visitor by Country of Residence

Arrivals by country of residence for first quarter showed that Australians (48.1%) are frequent travellers to Solomon Islands as in the previous quarters, followed by Other Asia (10.8%), Papua New Guinea (9.3%), Fiji (6.5%), New Zealand (6.1%), USA (3.9%) and Japan (3.5%).

Visitor by Month

Visitors by monthly arrivals for first quarter showed that March has the highest number of arrivals with 1,677 persons. This was followed by the month of February which recorded a total of 1,591 persons and January the least with 1,383 persons.

Tourists

Tourist¹ arrivals for first quarter of the year totalled to 967 persons and they spent an average of 13 days in the country. The highest number of tourists recorded for the quarter comes from Australia (52.8%) and staying in the country for an average of 12 days. This was followed by Other Asia (11.1%), USA (6.7%), Japan (5.5%) and Other Europe (4.4%).

Visitor by Purpose of Visit

Distribution of visitors by purpose of visit confirmed Business & conference (39.8%) as most popular during the quarter. This was followed by Other (28.7%), Holiday & Vocation (19.8%), Visit friends & relatives (10.8%) and Transit & stopover the least by 1%.

Visitor by Age Group

Visitor Arrivals by broad age groups show that 84.6% of arrivals were in the 25years to 64years age range. The younger and the older age brackets represent 12.4% while the remaining 3% represents arrivals who did not state their age. Male represent 76.4% of the arrival and female 23.6%. (Refer to Chart 6)

Visitor by Occupation

Visitor by occupational category revealed that those who stated Other (35.2%) as their occupation recorded the highest during the quarter. This was followed by Professional & Technical (30.4%), Administration and managerial (12.1%), Service worker (7.1%), No work and Production Related Work (4.8%) each. Table 7 further revealed that Australia not only dominated the Arrivals in terms of markets but also dominated most of the categories of occupations during the quarter. Refer to Table 7 for further analysis.

Visitor by Carrier

The most popular carriers during the quarter were Solomon Airlines (46.7%) followed by Pacific Blue (22.4%), Air Niu Gini (19.9%) and Air Pacific (8.3%).

¹ Refer to Appendix 1 for the definition

Table 1: Total Arrivals Classified by Purpose of Travel by Sex, by Year by Quarter: 1st Quarter 2012

Year / Quarter	Returning Resident						Intending Resident				Visitor			Total		
	Solomon Islander			Non-Solomon Islander			All	M	F	T	M	F	T	M	F	All
	M	F	T	M	F	T										
2008 1 st	1,537	938	2,475	4	2	6	2,481	537	174	711	2,094	879	2,973	4,172	1,993	6,165
2 nd	2,492	1,268	3,760	3	1	4	3,764	312	87	399	2,857	1,344	4,201	5,664	2,700	8,364
3 rd	1,593	952	2,545	761	437	1,198	3,743	605	155	760	3,138	1,480	4,618	6,097	3,024	9,121
4 th	2,507	1,366	3,873	969	453	1,422	5,295	396	125	521	3,063	1,409	4,472	6,935	3,353	10,288
2009 1 st	1,173	760	1,933	677	436	1,113	3,046	659	315	974	3,015	1,258	4,273	5,524	2,769	8,293
2 nd	1,427	728	2,155	471	238	709	2,864	611	244	855	3,242	1,374	4,616	5,751	2,584	8,335
3 rd	1,182	709	1,891	425	220	645	2,536	786	355	1,141	3,263	1,519	4,782	5,656	2,803	8,459
4 th	2,145	1,152	3,297	393	197	590	3,887	722	282	1,004	3,177	1,412	4,589	6,437	3,043	9,480
2010 1 st	1,045	695	1,740	550	342	892	2,632	808	380	1,188	3,115	1,095	4,210	5,518	2,512	8,030
2 nd	1,337	707	2,044	494	272	766	2,810	808	307	1,115	3,370	1,384	4,754	6,009	2,670	8,679
3 rd	1,421	730	2,151	485	274	759	2,910	835	316	1,151	4,494	1,768	6,262	7,235	3,088	10,323
4 th	2,783	1,550	4,333	13	4	17	4,350	848	284	1,132	3,766	1,529	5,295	7,410	3,367	10,777
2011 1 st	1,187	724	1,911	694	332	1,026	2,937	1,058	362	1,420	3,972	1,147	5,119	6,911	2,565	9,476
2 nd	1,601	880	2,481	615	292	907	3,388	716	258	974	4,071	1,434	5,505	7,003	2,864	9,867
3 rd	1,716	739	2,455	642	282	924	3,379	930	275	1,205	4,523	1,721	6,244	7,811	3,017	10,828
4 th	3,297	1,765	5,062	4	2	6	5,068	805	268	1,073	4,341	1,732	6,073	8,447	3,767	12,214
2012 1 st	1,915	994	2,909	15	3	18	2,927	1,029	387	1,416	3,554	1,097	4,651	6,513	2,481	8,994
Percentage change																
08 ^{3rd} -09 ^{3rd}	-25.8	-25.5	-25.7	-44.2	-49.7	-46.2	-32.2	29.9	129.0	50.1	4.0	2.6	3.6	-7.2	-7.3	-7.3
09 ^{3rd} -09 ^{4th}	81.5	62.5	74.4	-7.5	-10.5	-8.5	53.3	-8.1	-20.6	-12.0	-2.6	-7.0	-4.0	13.8	8.6	12.1
08 ^{4th} -09 ^{4th}	-14.4	-15.7	-14.9	-59.4	-56.5	-58.5	-26.6	82.3	125.6	92.7	3.7	0.2	2.6	-7.2	-9.2	-7.9
09 ^{4th} -10 ^{1st}	-51.3	-39.7	-47.2	39.9	73.6	51.2	-32.3	11.9	34.8	18.3	-2.0	-22.5	-8.3	-14.3	-17.4	-15.3
09 ^{1st} -10 ^{1st}	-10.9	-8.6	-10.0	-18.8	-21.6	-19.9	-13.6	22.6	20.6	22.0	3.3	-13.0	-1.5	-0.1	-9.3	-3.2
10 ^{1st} -10 ^{2nd}	27.9	1.7	17.5	-10.2	-20.5	-14.1	6.8	0.0	-19.2	-6.1	8.2	26.4	12.9	8.9	6.3	8.1
09 ^{2nd} -10 ^{2nd}	-6.3	-2.9	-5.2	4.9	14.3	8.0	-1.9	32.2	25.8	30.4	3.9	0.7	3.0	4.5	3.3	4.1
10 ^{2nd} -10 ^{3rd}	6.3	3.3	5.2	-1.8	0.7	-0.9	3.6	3.3	2.9	3.2	33.4	27.7	31.7	20.4	15.7	18.9
09 ^{3rd} -10 ^{3rd}	20.2	3.0	13.7	14.1	24.5	17.7	14.7	6.2	-11.0	0.9	37.7	16.4	30.9	27.9	10.2	22.0
09 ^{4th} -10 ^{4th}	29.7	34.5	31.4	-96.7	-98.0	-97.1	11.9	17.5	0.7	12.7	18.5	8.3	15.4	15.1	10.6	13.7
10 ^{1st} -11 ^{1st}	13.6	4.2	9.8	26.2	-2.9	15.0	11.6	30.9	-4.7	19.5	27.5	4.7	21.6	25.2	2.1	18.0
10 ^{4th} -11 ^{1st}	-57.3	-53.3	-55.9	5238.5	8200.0	5935.3	-32.5	24.8	27.5	25.4	5.5	-25.0	-3.3	-6.7	-23.8	-12.1
11 ^{1st} -11 ^{2nd}	34.9	21.5	29.8	-11.4	-12.0	-11.6	15.4	-32.3	-28.7	-31.4	2.5	25.0	7.5	1.3	11.7	4.1
11 ^{2nd} -11 ^{3rd}	7.2	-16.0	-1.0	4.4	-3.4	1.9	-0.3	29.9	6.6	23.7	11.1	20.0	13.4	11.5	5.3	9.7
11 ^{3rd} -11 ^{4th}	92.1	138.8	106.2	-99.4	-99.3	-99.4	50.0	-13.4	-2.5	-11.0	-4.0	0.6	-2.7	8.1	24.9	12.8
11 ^{4th} -12 ^{1st}	-41.9	-43.7	-42.5	275.0	50.0	200.0	-42.2	27.8	44.4	32.0	-18.1	-36.7	-23.4	-22.9	-34.1	-26.4

Chart 1: Arrivals by category 1st quarter 2012

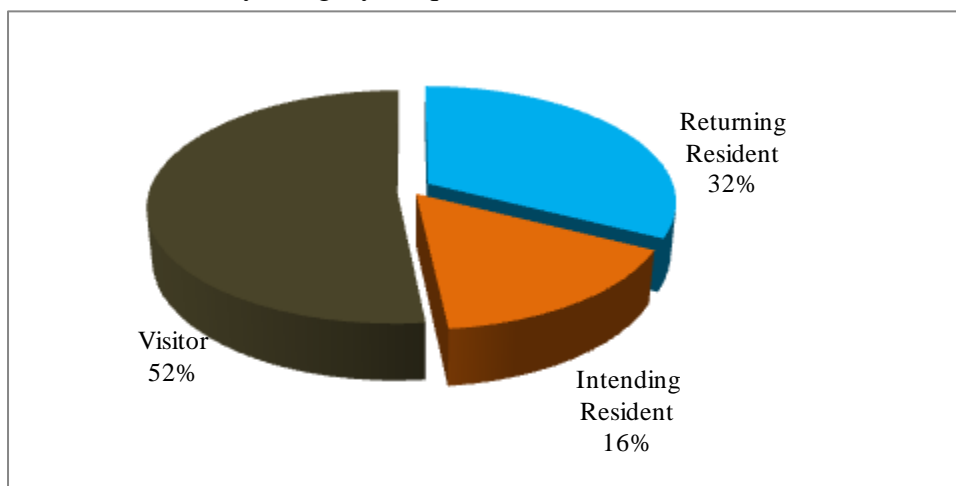


Table 2: Visitor Arrivals by Country of Residence by year by quarter: 1st Quarter 2012

Country of Usual Residence	2008					2009					2010					2011					2012
	Q1	Q2	Q3	Q4	Total	Q1	Q2	Q3	Q4	Total	Q1	Q2	Q3	Q4	Total	Q1	Q2	Q3	Q4	Total	Q1
Australia	1,291	1,971	2,184	1,967	7,413	1,952	2,361	2,354	2,235	8,902	2,087	2,544	3,362	2,758	10,751	2,569	2,763	3,042	3,018	11,392	2,238
PNG	181	243	234	248	906	254	260	228	356	1,098	305	248	339	469	1,361	443	479	589	546	2,057	431
US	198	279	336	292	1,105	177	263	345	249	1,034	127	236	287	212	862	188	243	368	241	1,040	183
NZ	166	256	318	357	1,097	363	324	379	298	1,364	274	335	647	454	1,710	385	433	479	427	1,724	285
UK	62	94	137	164	457	112	111	121	75	419	82	108	141	101	432	78	110	101	91	380	81
Japan	144	92	172	181	589	192	142	159	380	873	166	95	151	177	589	145	106	229	161	641	162
Germany	19	14	38	53	124	37	15	25	23	100	24	33	26	18	101	22	26	38	25	111	22
Canada	19	24	29	43	115	23	20	21	24	88	32	22	25	34	113	51	30	55	56	192	29
Oth.Pacific	165	417	242	332	1,156	312	213	281	144	950	167	125	123	170	585	185	185	170	223	763	101
Vanuatu	120	119	137	142	518	86	72	65	85	308	48	86	126	145	405	125	103	100	185	513	121
Hong Kong	34	6	15	2	57	3	9	5	-	17	10	-	23	5	38	12	12	22	84	130	14
Fiji	161	203	239	184	787	225	257	247	188	917	206	278	273	234	991	262	327	285	330	1,204	300
Other Asia	303	356	296	294	1,249	319	447	326	317	1,409	503	477	509	336	1,825	487	523	562	484	2,056	500
Netherlands	6	5	7	19	37	14	12	10	15	51	11	9	16	17	53	18	13	20	13	64	12
Oth.Europe	74	79	128	105	386	126	57	100	91	374	78	63	100	66	307	60	62	63	61	246	76
France	10	20	36	25	91	19	6	29	27	81	12	24	24	22	82	10	20	22	8	60	24
Italy	4	5	17	11	37	13	4	22	27	66	4	3	13	19	39	13	17	20	30	80	13
Oth.Country	16	18	53	53	140	46	43	65	55	209	74	68	77	58	277	66	53	79	90	288	59
Total	2,973	4,201	4,618	4,472	16,264	4,273	4,616	4,782	4,589	18,260	4,210	4,754	6,262	5,295	20,521	5,119	5,505	6,244	6,073	22,941	4,651
Percentage																					
Australia	43.4	46.9	47.3	44.0	45.6	45.7	51.1	49.2	48.7	48.8	49.6	53.5	53.7	52.1	52.4	50.2	50.2	48.7	49.7	49.7	48.1
PNG	6.1	5.8	5.1	5.5	5.6	5.9	5.6	4.8	7.8	6.0	7.2	5.2	5.4	8.9	6.6	8.7	8.7	9.4	9.0	9.0	9.3
US	6.7	6.6	7.3	6.5	6.8	4.1	5.7	7.2	5.4	5.7	3.0	5.0	4.6	4.0	4.2	3.7	4.4	5.9	4.0	4.5	3.9
NZ	5.6	6.1	6.9	8.0	6.7	8.5	7.0	7.9	6.5	7.5	6.5	7.0	10.3	8.6	8.3	7.5	7.9	7.7	7.0	7.5	6.1
UK	2.1	2.2	3.0	3.7	2.8	2.6	2.4	2.5	1.6	2.3	1.9	2.3	2.3	1.9	2.1	1.5	2.0	1.6	1.5	1.7	1.7
Japan	4.8	2.2	3.7	4.0	3.6	4.5	3.1	3.3	8.3	4.8	3.9	2.0	2.4	3.3	2.9	2.8	1.9	3.7	2.7	2.8	3.5
Germany	0.6	0.3	0.8	1.2	0.8	0.9	0.3	0.5	0.5	0.5	0.6	0.7	0.4	0.3	0.5	0.4	0.5	0.6	0.4	0.5	0.5
Canada	0.6	0.6	0.6	1.0	0.7	0.5	0.4	0.4	0.5	0.5	0.8	0.5	0.4	0.6	0.6	1.0	0.5	0.9	0.9	0.8	0.6
Oth.Pacific	5.5	9.9	5.2	7.4	7.1	7.3	4.6	5.9	3.1	5.2	4.0	2.6	2.0	3.2	2.9	3.6	3.4	2.7	3.7	3.3	2.2
Vanuatu	4.0	2.8	3.0	3.2	3.2	2.0	1.6	1.4	1.9	1.7	1.1	1.8	2.0	2.7	2.0	2.4	1.9	1.6	3.0	2.2	2.6
Hong Kong	1.1	0.1	0.3	0.0	0.4	0.1	0.2	0.1	0.0	0.1	0.2	-	0.4	0.1	0.2	0.2	0.2	0.4	1.4	0.6	0.3
Fiji	5.4	4.8	5.2	4.1	4.8	5.3	5.6	5.2	4.1	5.0	4.9	5.8	4.4	4.4	4.8	5.1	5.9	4.6	5.4	5.2	6.5
Other Asia	10.2	8.5	6.4	6.6	7.7	7.5	9.7	6.8	6.9	7.7	11.9	10.0	8.1	6.3	8.9	9.5	9.5	9.0	8.0	9.0	10.8
Netherlands	0.2	0.1	0.2	0.4	0.2	0.3	0.3	0.2	0.3	0.3	0.3	0.2	0.3	0.3	0.3	0.4	0.2	0.3	0.2	0.3	0.3
Oth.Europe	2.5	1.9	2.8	2.3	2.4	2.9	1.2	2.1	2.0	2.0	1.9	1.3	1.6	1.2	1.5	1.2	1.1	1.0	1.0	1.1	1.6
France	0.3	0.5	0.8	0.6	0.6	0.4	0.1	0.6	0.6	0.4	0.3	0.5	0.4	0.4	0.4	0.2	0.4	0.4	0.1	0.3	0.5
Italy	0.1	0.1	0.4	0.2	0.2	0.3	0.1	0.5	0.6	0.4	0.1	0.1	0.2	0.4	0.2	0.3	0.3	0.3	0.5	0.3	0.3
Oth.Country	0.5	0.4	1.1	1.2	0.9	1.1	0.9	1.4	1.2	1.1	1.8	1.4	1.2	1.1	1.3	1.3	1.0	1.3	1.5	1.3	1.3
Total	100	100	100	100	100	100	100	100	100	100	100	100	100	100	100	100	100	100	100	100	100

Chart 2: Visitors Arrival by Country of residence by quarter, 1st quarter 2012

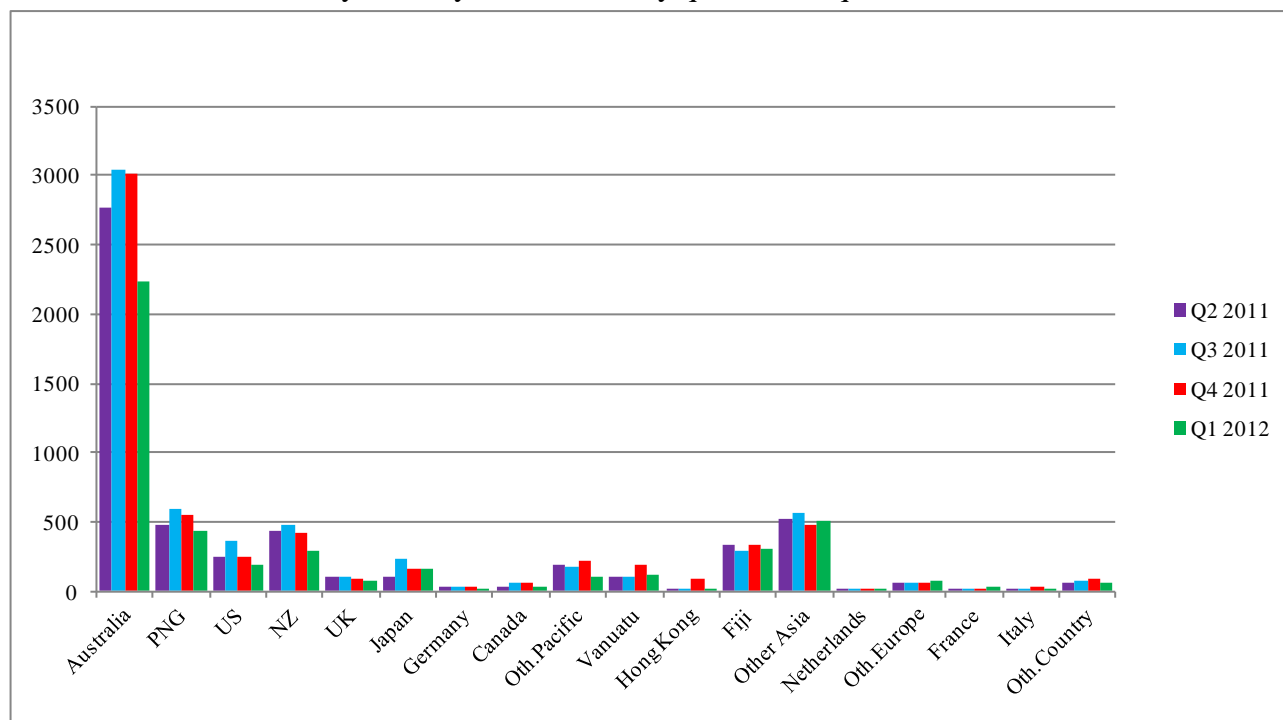


Table 3: Visitor Arrivals by Month: 2006 – 1st Quarter 2012

Month	2006	2007	2008	2009	2010	2011	2012
January	952	546	889	1,602	1,235	1600	1,383
February	838	1,020	1,282	1,422	1,209	1658	1,591
March	972	1,251	802	1,249	1,766	1861	1,677
April	994	1,452	1,388	1,499	1,820	1736	
May	858	1,137	1,261	1,393	1,137	1760	
June	1,289	1,265	1,552	1,724	1,797	2009	
July	865	822	1,692	1,603	2,264	2185	
August	892	1,299	1,469	1,520	1,845	1900	
September	681	1,299	1,457	1,659	2,153	2159	
October	942	1,260	1,399	1,709	1,813	1931	
November	1,118	1,246	1,545	1,475	1,624	2195	
December	1,081	1,151	1,528	1,405	1,858	1947	
Total	11,482	13,748	16,264	18,260	20,521	22,941	4,651
Percentage							
January	8.3	4.0	5.5	8.8	5.5	7.0	29.7
February	7.3	7.4	7.9	7.8	5.4	7.2	34.2
March	8.5	9.1	4.9	6.8	7.8	8.1	36.1
April	8.7	10.6	8.5	8.2	8.1	7.6	
May	7.5	8.3	7.8	7.6	5.0	7.7	
June	11.2	9.2	9.5	9.4	8.0	8.8	
July	7.5	6.0	10.4	8.8	10.0	9.5	
August	7.8	9.4	9.0	8.3	8.2	8.3	
September	5.9	9.4	9.0	9.1	9.6	9.4	
October	8.2	9.2	8.6	9.4	8.0	8.4	
November	9.7	9.1	9.5	8.1	7.2	9.6	
December	9.4	8.4	9.4	7.7	8.2	8.5	
Total	100	100.0	100.0	100.0	100.0	100.0	100.0

Chart 3: Visitors Arrival by month, 2008 – 1st quarter 2012

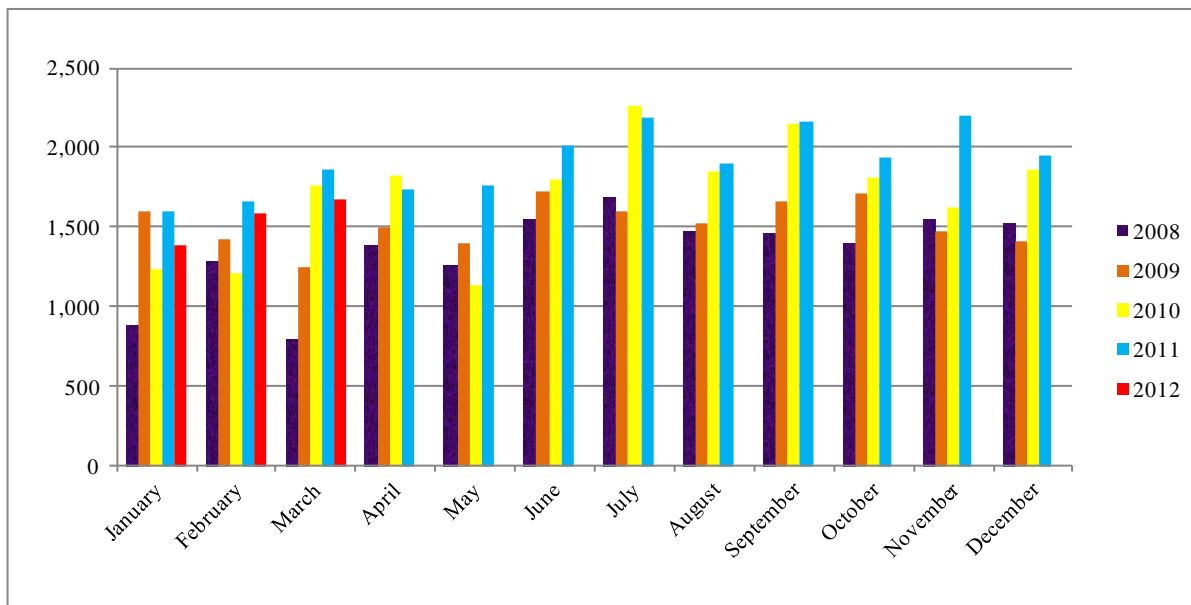


Table 4: Visitors, classified as tourists by Country of residence by year, quarter and average length of stay: 2nd Quarter 2009 – 1st Quarter 2012

Country of Usual Residence	2009						2010						2011						2012						
	Quarter 2		Quarter 3		Quarter 4		Quarter 1		Quarter 2		Quarter 3		Quarter 4		Quarter 1		Quarter 2		Quarter 3		Quarter 4		Quarter 1		
	tourist	day	tourist	day	tourist	day	tourist	day	tourist	day	tourist	day	tourist	day	tourist	day	tourist	day	tourist	day	tourist	day	tourist	day	tourist
Australia	768	13	878	14	724	15	558	13	756	11	1,010	12	854	15	611	14	872	13	1,034	15	915	20	511	12	
PNG	36	11	35	13	62	33	46	22	41	11	36	15	60	27	34	13	53	15	72	16	67	30	23	14	
US	95	16	163	13	141	14	46	16	122	11	166	12	114	13	91	11	104	16	191	13	102	13	65	10	
NZ	41	14	99	17	41	23	17	18	62	14	140	14	65	19	29	23	56	15	102	17	70	20	24	11	
UK	38	27	52	28	37	25	24	18	48	19	72	23	54	13	26	19	49	25	42	23	34	16	25	18	
Japan	56	7	84	11	286	5	45	8	23	5	56	12	94	6	45	12	24	10	95	15	51	7	53	7	
Germany	6	9	15	14	18	27	17	16	23	13	13	17	13	14	15	35	12	13	24	17	17	12	14	18	
Canada	6	24	9	29	11	13	14	18	8	33	7	12	11	14	27	17	8	23	14	14	28	15	8	15	
Oth.Pacific	17	8	84	14	29	18	22	16	8	7	16	12	23	27	19	15	14	12	15	16	21	23	11	14	
Vanuatu	7	13	-	-	-	10	4	9	9	15	10	18	12	14	20	15	13	14	20	17	27	25	21	7	
Hong Kong	6	12	-	-	-	20	3	15	-	-	8	10	2	3	5	5	7	8	11	12	23	19	3	18	
Fiji	13	7	8	7	19	-	9	23	10	25	15	31	21	29	15	13	23	18	26	20	20	21	22	19	
Oth.Asia	88	24	78	22	61	30	78	20	106	19	126	13	107	23	127	20	103	25	142	22	81	16	107	22	
Netherlands	6	44	6	18	10	15	5	8	4	15	6	15	5	7	6	34	5	18	9	20	10	20	5	21	
Oth.Europe	18	22	50	12	53	19	48	22	33	17	72	16	34	16	35	18	32	14	37	18	26	18	43	14	
France	2	17	11	19	16	14	6	12	13	23	9	16	8	21	4	28	5	17	15	20	4	12	14	16	
Italy	2	12	19	14	15	43	2	12	1	8	11	17	5	52	5	22	5	10	6	18	18	19	4	21	
Oth.Country	12	20	23	12	12	11	21	22	15	9	24	14	14	18	23	12	14	21	26	16	44	16	14	9	
Total	1,217	15	1,614	15	1,550	15	965	15	1,282	12	1,797	13	1,496	18	1,137	16	1,399	15	1,881	16	1,558	15	967	13	

Chart 4: Tourist Arrivals by Country of Residence, 1st Quarter 2012

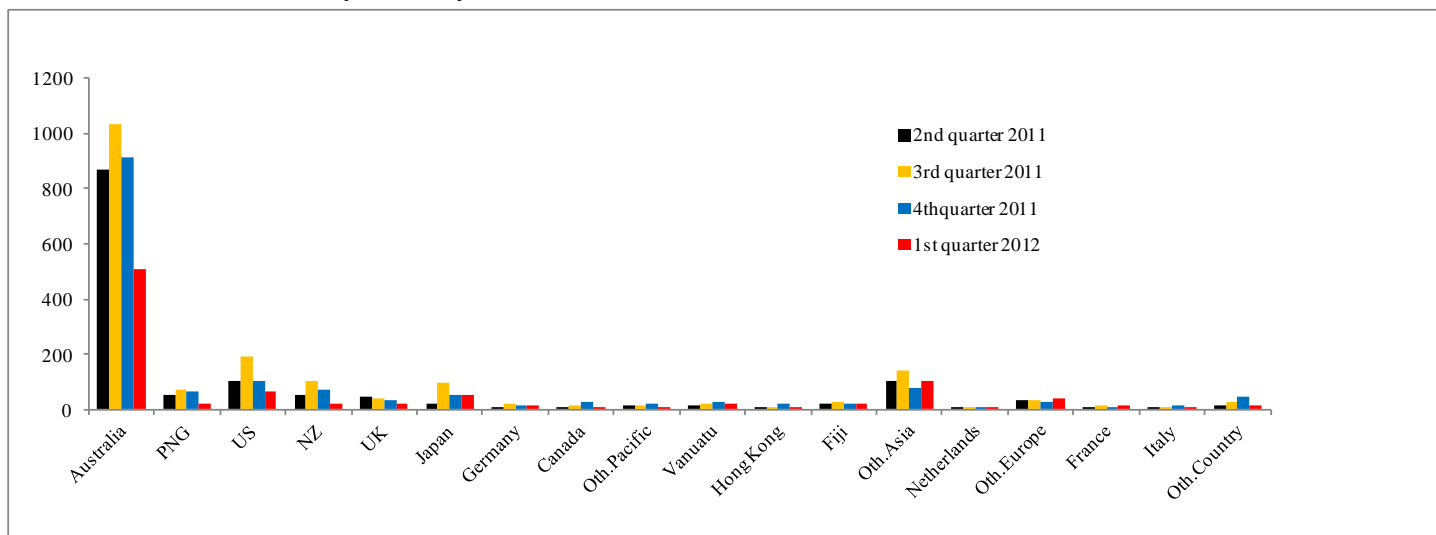


Table 5: Visitor Arrivals by Country of Residence by Purpose of Visit by sex: 1st Quarter 2012

Country of Usual Residence	Business & Conference			Holiday & Vocation			Transit & Stopover			Visit friends/Relatives			Other			Total		
	M	F	T	M	F	T	M	F	T	M	F	T	M	F	T	M	F	All
Australia	629	169	798	348	157	505	5	1	6	139	97	236	552	141	693	1,673	565	2,238
PNG	142	28	170	9	9	18	3	2	5	33	27	60	158	20	178	345	86	431
US	45	21	66	36	20	56	8	1	9	10	9	19	27	6	33	126	57	183
NZ	117	24	141	17	5	22	2	-	2	22	12	34	65	21	86	223	62	285
UK	21	6	27	12	13	25	-	-	-	3	4	7	13	9	22	49	32	81
Japan	74	6	80	40	12	52	1	-	1	7	3	10	16	3	19	138	24	162
Germany	-	-	-	10	4	14	-	-	-	3	-	3	4	1	5	17	5	22
Canada	9	1	10	6	2	8	-	-	-	1	2	3	6	2	8	22	7	29
Oth.Pacific	44	21	65	8	2	10	1	-	1	2	5	7	13	5	18	68	33	101
Vanuatu	39	8	47	8	4	12	9	-	9	10	10	20	27	6	33	93	28	121
Hong Kong	8	1	9	2	1	3	-	-	-	1	-	1	1	-	1	12	2	14
Fiji	120	54	174	16	6	22	-	-	-	13	9	22	65	17	82	214	86	300
Oth.Asia	185	21	206	85	14	99	8	-	8	55	8	63	114	10	124	447	53	500
Netherlands	2	2	4	4	1	5	-	-	-	-	1	1	2	-	2	8	4	12
Oth.Europe	14	5	19	27	16	43	-	-	-	4	4	8	6	-	6	51	25	76
France	6	-	6	9	5	14	-	-	-	-	1	1	2	1	3	17	7	24
Italy	1	-	1	3	1	4	-	-	-	1	-	1	5	2	7	10	3	13
Oth.Country	20	6	26	5	3	8	2	4	6	2	2	4	12	3	15	41	18	59
Total	1,476	373	1,849	645	275	920	39	8	47	306	194	500	1,088	247	1,335	3,554	1,097	4,651
Percentage																		
Australia	28.1	7.6	35.7	15.5	7.0	22.6	0.2	-	0.3	6.2	4.3	10.5	24.7	6.3	31.0	74.8	25.2	100.0
PNG	32.9	6.5	39.4	2.1	2.1	4.2	0.7	0.5	1.2	7.7	6.3	13.9	36.7	4.6	41.3	80.0	20.0	100.0
US	24.6	11.5	36.1	19.7	10.9	30.6	4.4	0.5	4.9	5.5	4.9	10.4	14.8	3.3	18.0	68.9	31.1	100.0
NZ	41.1	8.4	49.5	6.0	1.8	7.7	0.7	-	0.7	7.7	4.2	11.9	22.8	7.4	30.2	78.2	21.8	100.0
UK	25.9	7.4	33.3	14.8	16.0	30.9	-	-	-	3.7	4.9	8.6	16.0	11.1	27.2	60.5	39.5	100.0
Japan	45.7	3.7	49.4	24.7	7.4	32.1	0.6	-	0.6	4.3	1.9	6.2	9.9	1.9	11.7	85.2	14.8	100.0
Germany	-	-	-	45.5	18.2	63.6	-	-	-	13.6	-	13.6	18.2	4.5	22.7	77.3	22.7	100.0
Canada	31.0	3.4	34.5	20.7	6.9	27.6	-	-	-	3.4	6.9	10.3	20.7	6.9	27.6	75.9	24.1	100.0
Oth.Pacific	43.6	20.8	64.4	7.9	2.0	9.9	1.0	-	1.0	2.0	5.0	6.9	12.9	5.0	17.8	67.3	32.7	100.0
Vanuatu	32.2	6.6	38.8	6.6	3.3	9.9	7.4	-	7.4	8.3	8.3	16.5	22.3	5.0	27.3	76.9	23.1	100.0
Hong Kong	57.1	7.1	64.3	14.3	7.1	21.4	-	-	-	7.1	-	7.1	7.1	-	7.1	85.7	14.3	100.0
Fiji	40.0	18.0	58.0	5.3	2.0	7.3	-	-	-	4.3	3.0	7.3	21.7	5.7	27.3	71.3	28.7	100.0
Oth.Asia	37.0	4.2	41.2	17.0	2.8	19.8	1.6	-	1.6	11.0	1.6	12.6	22.8	2.0	24.8	89.4	10.6	100.0
Netherlands	16.7	16.7	33.3	33.3	8.3	41.7	-	-	-	-	8.3	8.3	16.7	-	16.7	66.7	33.3	100.0
Oth.Europe	18.4	6.6	25.0	35.5	21.1	56.6	-	-	-	5.3	5.3	10.5	7.9	-	7.9	67.1	32.9	100.0
France	25.0	-	25.0	37.5	20.8	58.3	-	-	-	-	4.2	4.2	8.3	4.2	12.5	70.8	29.2	100.0
Italy	7.7	-	7.7	23.1	7.7	30.8	-	-	-	7.7	-	7.7	38.5	15.4	53.8	76.9	23.1	100.0
Oth.Country	33.9	10.2	44.1	8.5	5.1	13.6	3.4	6.8	10.2	3.4	3.4	6.8	20.3	5.1	25.4	69.5	30.5	100.0
Total	31.7	8.0	39.8	13.9	5.9	19.8	0.8	0.2	1.0	6.6	4.2	10.8	23.4	5.3	28.7	76.4	23.6	100.0

Chart 5: Visitors Arrival by Country of Residence by Purpose of Visit, 1st quarter 2012

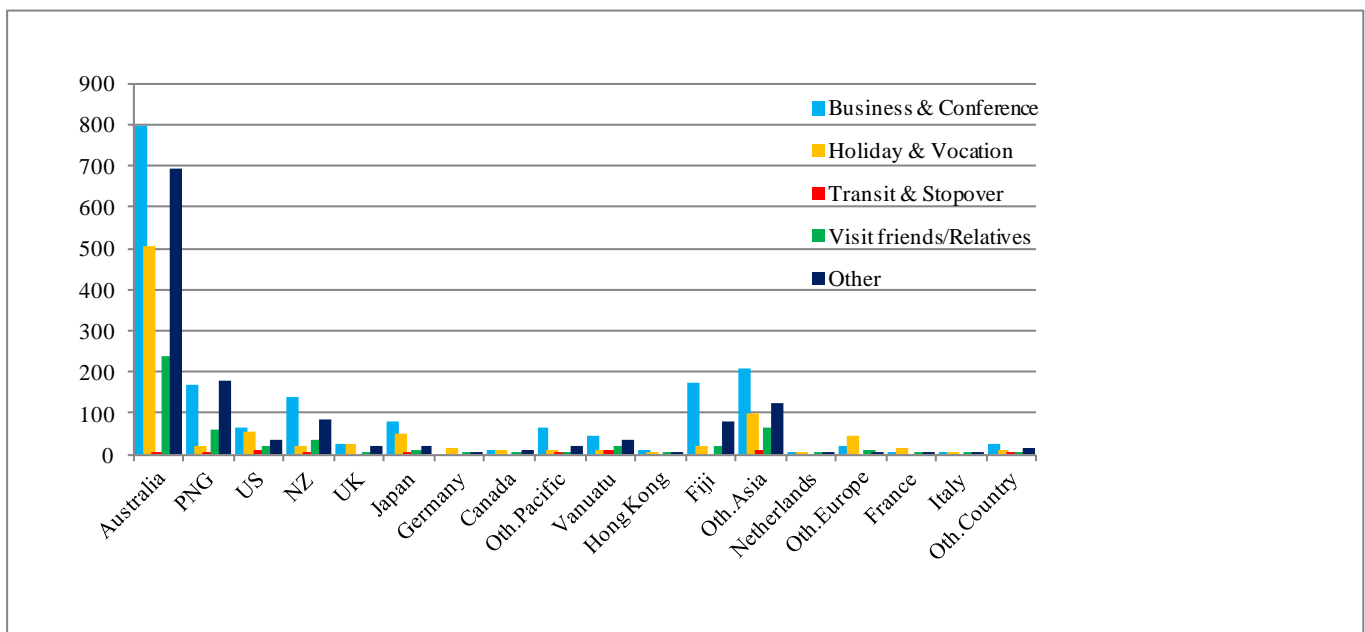


Table 6: Visitor Arrivals by Country of Residence by Age Groups by Sex: 1stQuarter 2012

Country of Usual Residence	Age-Group																		Total
	0-14		15-24		25-34		35-44		45-54		55-64		65+		Not Stated		Total		
	M	F	M	F	M	F	M	F	M	F	M	F	M	F	M	F	M	F	
Australia	36	21	64	48	273	136	410	106	411	132	329	79	106	25	44	18	1,673	565	2,238
PNG	2	7	8	11	71	24	117	23	96	16	32	2	7	1	12	2	345	86	431
US	2	1	1	4	17	9	29	16	35	13	22	9	14	5	6	-	126	57	183
NZ	5	2	8	4	27	11	51	11	63	14	51	14	11	4	7	2	223	62	285
UK	-	-	2	4	5	7	13	4	8	5	13	5	8	6	-	1	49	32	81
Japan	-	-	5	2	14	6	40	6	30	4	34	3	12	3	3	-	138	24	162
Germany	-	-	-	-	5	2	4	1	3	1	2	-	3	1	-	-	17	5	22
Canada	-	-	4	1	1	2	5	-	6	-	6	3	-	-	-	1	22	7	29
Oth.Pacific	1	-	1	1	16	7	15	7	20	13	11	3	1	2	3	-	68	33	101
Vanuatu	2	1	9	4	20	8	18	10	22	2	13	2	1	1	8	-	93	28	121
Hong Kong	-	-	-	-	2	1	2	1	3	-	3	-	1	-	1	-	12	2	14
Fiji	-	-	8	8	41	16	67	19	52	26	33	12	6	4	7	1	214	86	300
Oth.Asia	5	-	18	8	91	19	123	14	118	6	67	3	10	2	15	1	447	53	500
Netherlands	-	-	1	1	1	1	2	-	1	1	3	-	-	1	-	-	8	4	12
Oth.Europe	1	2	5	4	9	6	11	3	9	3	7	2	6	2	3	3	51	25	76
France	2	-	-	1	2	3	5	1	8	2	-	-	-	-	-	-	17	7	24
Italy	-	-	1	1	2	-	-	1	2	-	3	1	2	-	-	-	10	3	13
Oth.Country	1	1	-	1	12	4	8	9	11	1	8	2	1	-	-	-	41	18	59
Total	57	35	135	103	609	262	920	232	898	239	637	140	189	57	109	29	3,554	1,097	4,651
Percentage																			
Australia	1.6	0.9	2.9	2.1	12.2	6.1	18.3	4.7	18.4	5.9	14.7	3.5	4.7	1.1	2.0	0.8	74.8	25.2	100.0
PNG	0.5	1.6	1.9	2.6	16.5	5.6	27.1	5.3	22.3	3.7	7.4	0.5	1.6	0.2	2.8	0.5	80.0	20.0	100.0
US	1.1	0.5	0.5	2.2	9.3	4.9	15.8	8.7	19.1	7.1	12.0	4.9	7.7	2.7	3.3	-	68.9	31.1	100.0
NZ	1.8	0.7	2.8	1.4	9.5	3.9	17.9	3.9	22.1	4.9	17.9	4.9	3.9	1.4	2.5	0.7	78.2	21.8	100.0
UK	-	-	2.5	4.9	6.2	8.6	16.0	4.9	9.9	6.2	16.0	6.2	9.9	7.4	-	1.2	60.5	39.5	100.0
Japan	-	-	3.1	1.2	8.6	3.7	24.7	3.7	18.5	2.5	21.0	1.9	7.4	1.9	1.9	-	85.2	14.8	100.0
Germany	-	-	-	-	22.7	9.1	18.2	4.5	13.6	4.5	9.1	-	13.6	4.5	-	-	77.3	22.7	100.0
Canada	-	-	13.8	3.4	3.4	6.9	17.2	0.0	20.7	-	20.7	10.3	-	-	-	3.4	75.9	24.1	100.0
Oth.Pacific	1.0	-	1.0	1.0	15.8	6.9	14.9	6.9	19.8	12.9	10.9	3.0	1.0	2.0	3.0	-	67.3	32.7	100.0
Vanuatu	1.7	0.8	7.4	3.3	16.5	6.6	14.9	8.3	18.2	1.7	10.7	1.7	0.8	0.8	6.6	-	76.9	23.1	100.0
Hong Kong	-	-	-	-	14.3	7.1	14.3	7.1	21.4	-	21.4	-	7.1	-	7.1	-	85.7	14.3	100.0
Fiji	-	-	2.7	2.7	13.7	5.3	22.3	6.3	17.3	8.7	11.0	4.0	2.0	1.3	2.3	0.3	71.3	28.7	100.0
Oth.Asia	1.0	-	3.6	1.6	18.2	3.8	24.6	2.8	23.6	1.2	13.4	0.6	2.0	0.4	3.0	0.2	89.4	10.6	100.0
Netherlands	-	-	8.3	8.3	8.3	8.3	16.7	-	8.3	8.3	25.0	-	-	8.3	-	-	66.7	33.3	100.0
Oth.Europe	1.3	2.6	6.6	5.3	11.8	7.9	14.5	3.9	11.8	3.9	9.2	2.6	7.9	2.6	3.9	3.9	67.1	32.9	100.0
France	8.3	-	-	4.2	8.3	12.5	20.8	4.2	33.3	8.3	-	-	-	-	-	-	70.8	29.2	100.0
Italy	-	-	7.7	7.7	15.4	-	-	7.7	15.4	-	23.1	7.7	15.4	-	-	-	76.9	23.1	100.0
Oth.Country	1.7	1.7	-	1.7	20.3	6.8	13.6	15.3	18.6	1.7	13.6	3.4	1.7	-	-	-	69.5	30.5	100.0
Total	1.2	0.8	2.9	2.2	13.1	5.6	19.8	5.0	19.3	5.1	13.7	3.0	4.1	1.2	2.3	0.6	76.4	23.6	100.0

Chart 6: Visitor Arrivals by Age group category by sex, 4th quarter 2011

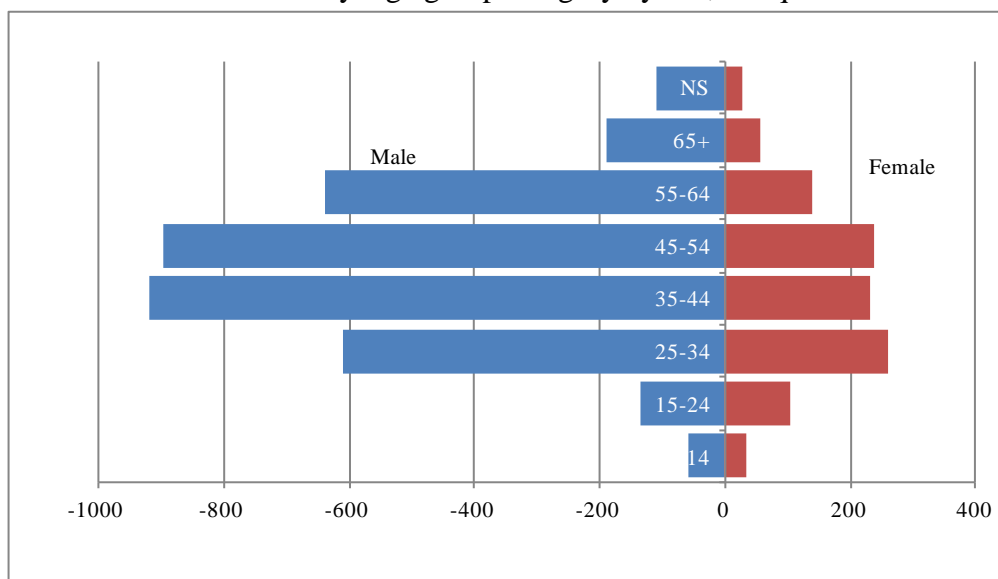


Table 7: Visitor Arrivals by Country of Residence by Occupation and Sex: 1st Quarter 2012

Country of Usual Residence	Professional and Technical		Administration and Managerial		Clerical & Related Work		Sales Worker		Service Worker		Agriculture Forestry Fishery		Production & Related Work		Other		No Work		Total		
	M	F	M	F	M	F	M	F	M	F	M	F	M	F	M	F	M	F	M	F	All
	Australia	537	202	220	47	8	10	13	1	178	42	32	7	134	-	494	217	57	39	1,673	565
PNG	100	27	52	9	1	3	1	-	4	12	8	1	26	-	146	29	7	5	345	86	431
US	53	25	8	3	1	2	1	-	1	5	-	-	-	55	16	7	6	126	57	183	
NZ	71	18	45	8	-	1	2	-	27	4	-	1	11	1	61	23	6	6	223	62	285
UK	14	9	4	2	1	1	-	-	1	1	-	-	-	25	11	4	8	49	32	81	
Japan	49	8	16	-	4	2	5	1	-	2	1	-	2	-	52	10	9	1	138	24	162
Germany	6	3	1	1	-	-	-	-	1	-	-	-	-	6	1	3	-	17	5	22	
Canada	11	1	2	-	-	-	1	1	-	-	-	-	-	7	4	1	1	22	7	29	
Oth.Pacific	22	4	4	5	-	2	-	-	5	2	-	-	2	-	34	19	1	1	68	33	101
Vanuatu	45	10	8	2	3	1	-	-	-	4	-	-	3	-	28	10	6	1	93	28	121
Hong Kong	2	-	3	-	-	-	-	-	-	-	-	-	-	7	2	-	-	12	2	14	
Fiji	52	17	32	6	-	-	4	1	19	3	31	4	2	1	72	49	2	5	214	86	300
Oth.Asia	55	13	64	6	7	1	71	4	6	6	21	-	40	-	163	19	20	4	447	53	500
Netherlands	2	2	1	-	-	-	-	-	1	-	-	-	-	4	1	-	1	8	4	12	
Oth.Europe	16	10	4	-	1	-	1	-	1	2	-	-	-	18	5	10	8	51	25	76	
France	5	2	-	-	-	-	-	-	-	-	-	-	-	12	5	-	-	17	7	24	
Italy	7	2	-	-	-	-	1	-	-	-	-	-	-	2	1	-	-	10	3	13	
Oth.Country	10	3	10	1	-	-	1	1	1	1	-	-	-	19	9	-	3	41	18	59	
Total	1,057	356	474	90	26	23	101	9	245	84	93	13	220	2	1,205	431	133	89	3,554	1,097	4,651
Percentage																					
Australia	24.0	9.0	9.8	2.1	0.4	0.4	0.6	-	8.0	1.9	1.4	0.3	6.0	-	22.1	9.7	2.5	1.7	74.8	25.2	100.0
PNG	23.2	6.3	12.1	2.1	0.2	0.7	0.2	-	0.9	2.8	1.9	0.2	6.0	-	33.9	6.7	1.6	1.2	80.0	20.0	100.0
US	29.0	13.7	4.4	1.6	0.5	1.1	0.5	-	0.5	2.7	-	-	-	-	30.1	8.7	3.8	3.3	68.9	31.1	100.0
NZ	24.9	6.3	15.8	2.8	-	0.4	0.7	-	9.5	1.4	-	0.4	3.9	0.4	21.4	8.1	2.1	2.1	78.2	21.8	100.0
UK	17.3	11.1	4.9	2.5	1.2	1.2	-	-	1.2	1.2	-	-	-	-	30.9	13.6	4.9	9.9	60.5	39.5	100.0
Japan	30.2	4.9	9.9	-	2.5	1.2	3.1	0.6	-	1.2	0.6	-	1.2	-	32.1	6.2	5.6	0.6	85.2	14.8	100.0
Germany	27.3	13.6	4.5	4.5	-	-	-	-	4.5	-	-	-	-	-	27.3	4.5	13.6	-	77.3	22.7	100.0
Canada	37.9	3.4	6.9	-	-	-	3.4	3.4	-	-	-	-	-	-	24.1	13.8	3.4	3.4	75.9	24.1	100.0
Oth.Pacific	21.8	4.0	4.0	5.0	-	2.0	-	-	5.0	2.0	-	-	2.0	-	33.7	18.8	1.0	1.0	67.3	32.7	100.0
Vanuatu	37.2	8.3	6.6	1.7	2.5	0.8	-	-	-	3.3	-	-	2.5	-	23.1	8.3	5.0	0.8	76.9	23.1	100.0
Hong Kong	14.3	-	21.4	-	-	-	-	-	-	-	-	-	-	-	50.0	14.3	-	-	85.7	14.3	100.0
Fiji	17.3	5.7	10.7	2.0	-	-	1.3	0.3	6.3	1.0	10.3	1.3	0.7	0.3	24.0	16.3	0.7	1.7	71.3	28.7	100.0
Oth.Asia	11.0	2.6	12.8	1.2	1.4	0.2	14.2	0.8	1.2	1.2	4.2	-	8.0	-	32.6	3.8	4.0	0.8	89.4	10.6	100.0
Netherlands	16.7	16.7	8.3	-	-	-	-	-	8.3	-	-	-	-	-	33.3	8.3	-	8.3	66.7	33.3	100.0
Oth.Europe	21.1	13.2	5.3	-	1.3	-	1.3	-	1.3	2.6	-	-	-	-	23.7	6.6	13.2	10.5	67.1	32.9	100.0
France	20.8	8.3	-	-	-	-	-	-	-	-	-	-	-	-	50.0	20.8	-	-	70.8	29.2	100.0
Italy	53.8	15.4	-	-	-	-	7.7	-	-	-	-	-	-	-	15.4	7.7	-	-	76.9	23.1	100.0
Oth.Country	16.9	5.1	16.9	1.7	-	-	1.7	1.7	1.7	1.7	-	-	-	-	32.2	15.3	-	5.1	69.5	30.5	100.0
Total	22.7	7.7	10.2	1.9	0.6	0.5	2.2	0.2	5.3	1.8	2.0	0.3	4.7	0.0	25.9	9.3	2.9	1.9	76.4	23.6	100.0

Chart 7: Visitors Arrival by occupation by sex, 1st quarter 2011

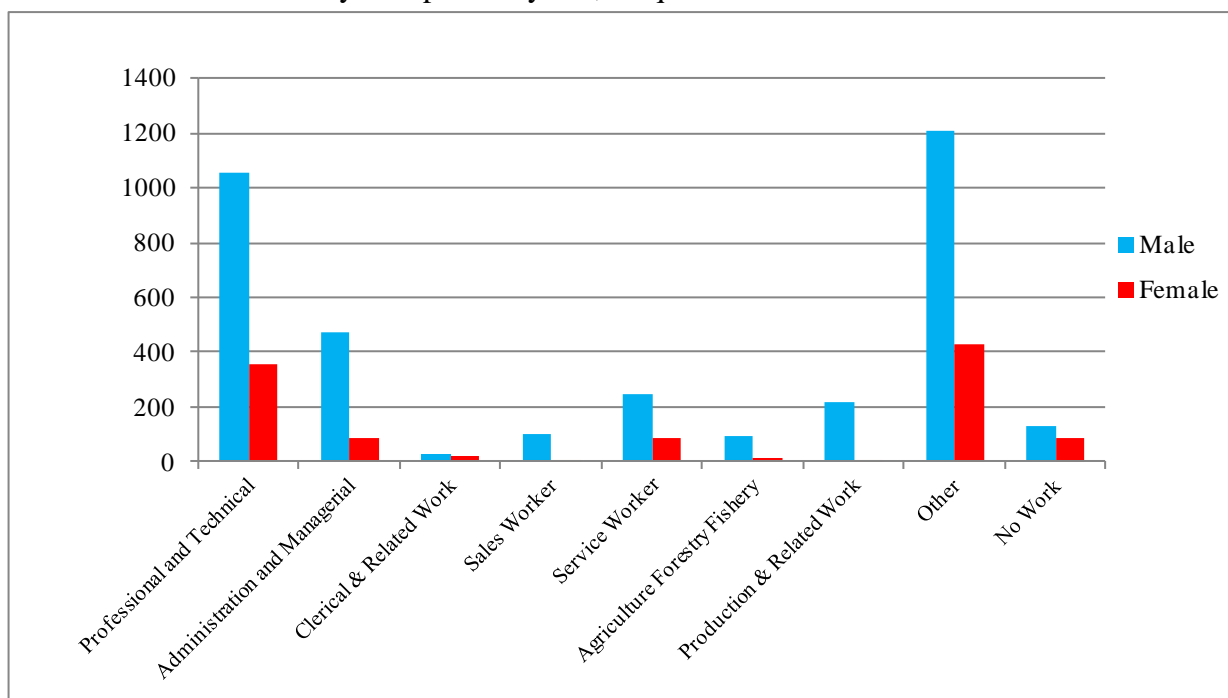
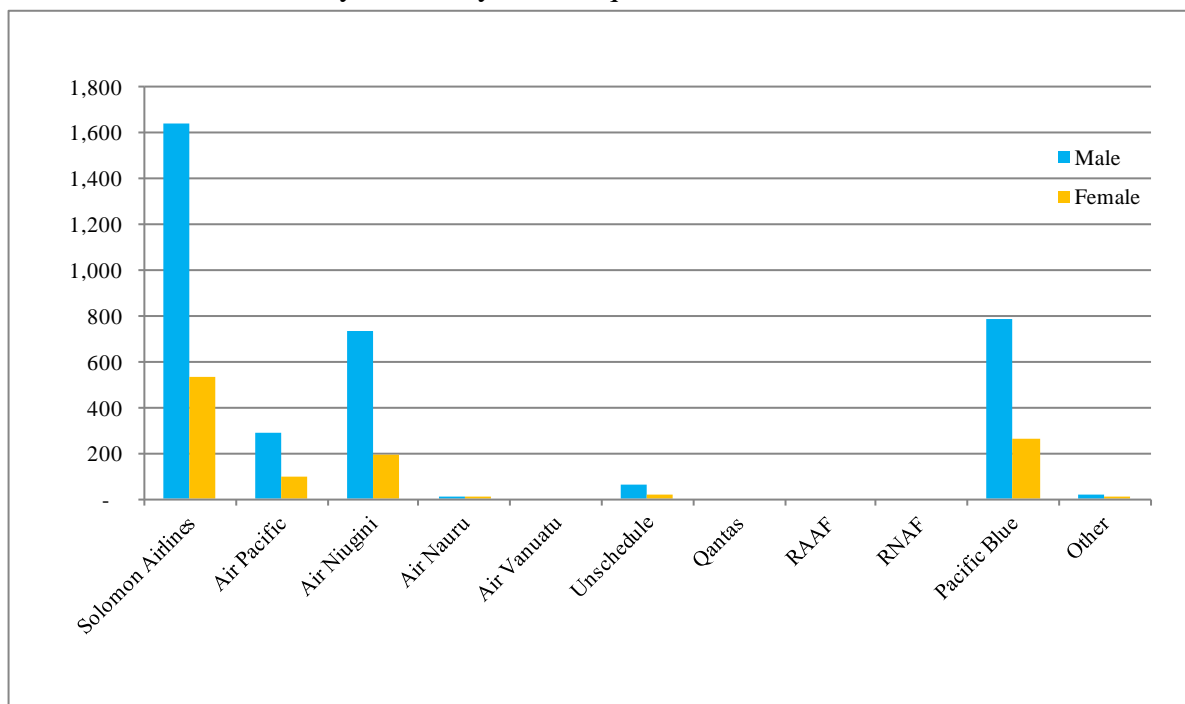


Table 8: Visitor Arrivals by Country of residence by Carrier by Sex: 1st Quarter 2012

Country of Usual Residence	Solomon Airlines		Air Pacific		Air Niugini		Air Nauru		Air Vanuatu		Unschedule		Qantas		RAAF		RNAS		Pacific Blue		Other		Total		
	M	F	M	F	M	F	M	F	M	F	M	F	M	F	M	F	M	F	M	F	M	F	M	F	All
	Australia	1,012	366	16	7	45	6	-	-	-	-	33	5	-	-	13	1	-	-	554	180	-	-	1,673	565
PNG	24	11	7	3	304	69	-	-	-	-	3	-	-	-	-	-	-	-	6	3	1	-	345	86	431
US	35	15	41	16	15	12	-	-	-	-	14	2	-	-	-	-	-	-	18	11	3	1	126	57	183
NZ	99	26	7	2	18	-	-	-	-	-	1	-	-	-	-	-	11	1	86	33	1	-	223	62	285
UK	25	19	3	3	10	4	-	-	-	-	-	-	-	-	-	-	-	11	6	-	-	49	32	81	
Japan	39	11	12	3	80	9	-	-	-	-	-	-	-	-	-	-	-	7	-	-	1	138	24	162	
Germany	10	4	1	1	3	-	-	-	-	-	-	-	-	-	-	-	-	3	-	-	-	17	5	22	
Canada	9	4	3	1	5	2	-	-	-	-	-	-	-	-	-	-	-	5	-	-	-	22	7	29	
Oth.Pacific	36	15	10	5	14	8	-	-	-	-	-	-	-	-	-	-	-	7	5	1	-	68	33	101	
Vanuatu	9	5	71	20	10	-	-	1	-	-	-	-	-	-	-	-	-	2	1	1	1	93	28	121	
Hong Kong	7	1	1	-	3	1	-	-	-	-	-	-	-	-	-	-	-	1	-	-	-	12	2	14	
Fiji	19	6	91	24	91	53	3	-	-	-	1	-	-	-	-	-	-	2	-	7	3	214	86	300	
Oth.Asia	271	26	12	2	109	18	-	-	-	-	9	3	-	-	-	-	-	46	4	-	-	447	53	500	
Netherlands	4	2	1	-	-	1	-	-	-	-	-	-	-	-	-	-	-	2	-	1	1	8	4	12	
Oth.Europe	14	9	9	3	12	6	-	-	-	-	-	-	-	-	-	-	-	16	7	-	-	51	25	76	
France	6	2	1	2	3	-	-	-	-	-	-	-	-	-	-	-	-	7	3	-	-	17	7	24	
Italy	5	2	2	-	3	-	-	-	-	-	-	-	-	-	-	-	-	-	1	-	-	-	10	3	13
Oth.Country	18	6	4	1	8	2	-	-	-	-	2	4	-	-	-	-	-	9	5	-	-	41	18	59	
Total	1,642	530	292	93	733	191	3	1	-	-	63	14	-	-	-	-	-	782	259	15	7	3,554	1,097	4,651	
	Percentage																								
Australia	45.2	16.4	0.7	0.3	2.0	0.3	-	-	-	-	1.5	0.2	-	-	-	-	-	24.8	8.0	-	-	74.8	25.2	100.0	
PNG	5.6	2.6	1.6	0.7	70.5	16.0	-	-	-	-	0.7	-	-	-	-	-	-	1.4	0.7	0.2	-	80.0	20.0	100.0	
US	19.1	8.2	22.4	8.7	8.2	6.6	-	-	-	-	7.7	1.1	-	-	-	-	-	9.8	6.0	1.6	0.5	68.9	31.1	100.0	
NZ	34.7	9.1	2.5	0.7	6.3	-	-	-	-	-	0.4	-	-	-	-	-	-	30.2	11.6	0.4	-	78.2	21.8	100.0	
UK	30.9	23.5	3.7	3.7	12.3	4.9	-	-	-	-	-	-	-	-	-	-	-	13.6	7.4	-	-	60.5	39.5	100.0	
Japan	24.1	6.8	7.4	1.9	49.4	5.6	-	-	-	-	-	-	-	-	-	-	-	4.3	-	-	0.6	85.2	14.8	100.0	
Germany	45.5	18.2	4.5	4.5	13.6	-	-	-	-	-	-	-	-	-	-	-	-	13.6	-	-	-	77.3	22.7	100.0	
Canada	31.0	13.8	10.3	3.4	17.2	6.9	-	-	-	-	-	-	-	-	-	-	-	17.2	-	-	-	75.9	24.1	100.0	
Oth.Pacific	35.6	14.9	9.9	5.0	13.9	7.9	-	-	-	-	-	-	-	-	-	-	-	6.9	5.0	1.0	-	67.3	32.7	100.0	
Vanuatu	7.4	4.1	58.7	16.5	8.3	-	-	0.8	-	-	-	-	-	-	-	-	-	1.7	0.8	0.8	0.8	76.9	23.1	100.0	
Hong Kong	50.0	7.1	7.1	-	21.4	7.1	-	-	-	-	-	-	-	-	-	-	-	7.1	-	-	-	85.7	14.3	100.0	
Fiji	6.3	2.0	30.3	8.0	30.3	17.7	1.0	-	-	-	0.3	-	-	-	-	-	-	0.7	-	2.3	1.0	71.3	28.7	100.0	
Oth.Asia	54.2	5.2	2.4	0.4	21.8	3.6	-	-	-	-	1.8	0.6	-	-	-	-	-	9.2	0.8	-	-	89.4	10.6	100.0	
Netherlands	33.3	16.7	8.3	-	-	8.3	-	-	-	-	-	-	-	-	-	-	-	16.7	-	8.3	8.3	66.7	33.3	100.0	
Oth.Europe	18.4	11.8	11.8	3.9	15.8	7.9	-	-	-	-	-	-	-	-	-	-	-	21.1	9.2	-	-	67.1	32.9	100.0	
France	25.0	8.3	4.2	8.3	12.5	-	-	-	-	-	-	-	-	-	-	-	-	29.2	12.5	-	-	70.8	29.2	100.0	
Italy	38.5	15.4	15.4	-	23.1	-	-	-	-	-	-	-	-	-	-	-	-	-	7.7	-	-	-	76.9	23.1	100.0
Oth.Country	30.5	10.2	6.8	1.7	13.6	3.4	-	-	-	-	3.4	6.8	-	-	-	-	-	15.3	8.5	-	-	69.5	30.5	100.0	
Total	35.3	11.4	6.3	2.0	15.8	4.1	0.1	-	-	-	1.4	0.3	-	-	-	-	-	16.8	5.6	0.3	0.2	76.4	23.6	100.0	

Chart 8: Visitor Arrivals by Carrier by Sea, 1st quarter 2012



Appendix 1

Concepts and Definitions

Persons entering Solomon Islands classify themselves into three (3) categories; returning resident, intending resident, and visitor. The concepts and definitions of the various categories are as follows:

(i) Returning residents

- Solomon Islanders and non-Solomon Islanders who have left the country and are returning to continue their residence.
- Non Solomon Islanders includes resident permit holders and Diplomatic officials, and their immediate family members. This may also includes legal or official arrangements that fall out side of the above.

(ii) Intending residents

- Non-Solomon Islander who wish to take up residence in Solomon Islands.

(iii) Visitors

- Any traveller who is not a Solomon Islander and who purposely spend less time – at most a period of 120 days², in the country and with the intention and purpose of visiting.
- *Tourist*
 - Visitors who further classify themselves stating their visit are purposely for '*holiday and vacation*'. This exclude, tourist arrivals by cruise ships.
 - Wife accompanying husband on business purpose is a private tourist unless also working.
 - *World Tourism Organization WTO definition of Tourism:*
*It comprises the activities of persons travelling to and staying in places outside their usual environment for not more than a year for leisure, business and other purposes not related to the exercise of an activity remunerated from within the place visited*³.

(iv) Markets

- *Country of Usual Residence*

² Solomon Islands 1993 Statistical Yearbook.

³ Dimensions of Hospitality, Study guide 1. p17

Appendix 2

Table 9: Intending Resident Arrivals by Country of Residence by Occupation and Sex: 1st Quarter 2012

Country of Usual Residence	Professional and Technical		Administration and Managerial		Clerical & Related Work		Sales Worker		Service Worker		Agriculture Forestry Fishery		Production & Related Work		Other		No Work		Total		
	M	F	M	F	M	F	M	F	M	F	M	F	M	F	M	F	M	F	M	F	All
Australia	50	27	23	11	2	3	2	-	112	33	-	-	8	-	94	67	17	33	308	174	482
PNG	7	8	4	-	-	-	-	-	36	3	1	-	2	-	19	6	6	9	75	26	101
US	6	2	-	-	-	-	-	-	-	-	-	-	1	-	3	2	2	1	12	5	17
NZ	8	7	6	1	-	-	1	2	43	8	1	-	1	-	10	5	1	3	71	26	97
UK	5	1	2	2	-	-	-	-	-	-	-	-	1	-	5	3	1	-	14	6	20
Japan	3	1	2	-	1	-	-	-	-	-	-	-	-	-	11	5	3	-	20	6	26
Germany	1	-	-	-	-	-	-	-	-	-	-	-	-	-	-	1	-	-	1	1	2
Canada	-	-	-	-	-	-	-	-	-	-	-	-	-	-	1	-	-	-	1	-	1
Oth.Pacific	1	10	-	1	-	-	-	-	6	8	1	-	-	-	6	3	4	7	18	29	47
Vanuatu	13	7	-	-	-	-	-	-	1	3	-	-	-	1	5	-	4	2	23	13	36
Hong Kong	-	-	-	-	-	-	-	-	-	-	-	-	-	-	-	1	-	-	-	1	1
Fiji	15	7	9	3	-	1	-	-	4	4	4	-	3	-	14	13	2	3	51	31	82
Oth.Asia	37	10	83	9	2	1	38	5	8	6	29	2	28	3	160	14	38	3	423	53	476
Netherlands	-	-	-	-	-	-	-	-	1	-	-	-	-	-	-	-	-	-	1	-	1
Oth.Europe	3	3	-	-	-	-	-	-	-	-	-	-	-	-	-	2	-	-	3	5	8
France	-	-	-	-	-	-	-	-	-	-	-	-	-	-	1	1	-	-	1	1	2
Italy	-	-	-	-	-	-	-	-	1	-	-	-	-	-	-	1	-	-	1	1	2
Oth.Country	1	3	1	-	-	-	-	-	-	-	-	-	-	-	4	5	-	1	6	9	15
Total	150	86	130	27	5	5	41	7	212	65	36	2	44	4	333	129	78	62	1,029	387	1,416
	Percentage																				
Australia	10.4	5.6	4.8	2.3	0.4	0.6	0.4	-	23.2	6.8	-	-	1.7	-	19.5	13.9	3.5	6.8	63.9	36.1	100.0
PNG	6.9	7.9	4.0	-	-	-	-	-	35.6	3.0	1.0	-	2.0	-	18.8	5.9	5.9	8.9	74.3	25.7	100.0
US	35.3	11.8	-	-	-	-	-	-	-	-	-	-	5.9	-	17.6	11.8	11.8	5.9	70.6	29.4	100.0
NZ	8.2	7.2	6.2	1.0	-	-	1.0	2.1	44.3	8.2	1.0	-	1.0	-	10.3	5.2	1.0	3.1	73.2	26.8	100.0
UK	25.0	5.0	10.0	10.0	-	-	-	-	-	-	-	-	5.0	-	25.0	15.0	5.0	-	70.0	30.0	100.0
Japan	11.5	3.8	7.7	-	3.8	-	-	-	-	-	-	-	-	-	42.3	19.2	11.5	-	76.9	23.1	100.0
Germany	-	-	-	-	-	-	-	-	-	-	-	-	-	-	-	-	-	-	-	-	-
Canada	-	-	-	-	-	-	-	-	-	-	-	-	-	-	-	-	-	-	-	-	-
Oth.Pacific	2.1	21.3	-	2.1	-	-	-	-	12.8	17.0	2.1	-	-	-	12.8	6.4	8.5	14.9	38.3	61.7	100.0
Vanuatu	36.1	19.4	-	-	-	-	-	-	2.8	8.3	-	-	-	2.8	13.9	-	11.1	5.6	63.9	36.1	100.0
Hong Kong	-	-	-	-	-	-	-	-	-	-	-	-	-	-	-	-	-	-	-	-	-
Fiji	18.3	8.5	11.0	3.7	-	1.2	-	-	4.9	4.9	4.9	-	3.7	-	17.1	15.9	2.4	3.7	62.2	37.8	100.0
Oth.Asia	7.8	2.1	17.4	1.9	0.4	0.2	8.0	1.1	1.7	1.3	6.1	0.4	5.9	0.6	33.6	2.9	8.0	0.6	88.9	11.1	100.0
Netherlands	-	-	-	-	-	-	-	-	-	-	-	-	-	-	-	-	-	-	-	-	-
Oth.Europe	37.5	37.5	-	-	-	-	-	-	-	-	-	-	-	-	-	25.0	-	-	37.5	62.5	100.0
France	-	-	-	-	-	-	-	-	-	-	-	-	-	-	-	-	-	-	-	-	-
Italy	-	-	-	-	-	-	-	-	50.0	-	-	-	-	-	-	50.0	-	-	-	-	-
Oth.Country	6.7	20.0	6.7	-	-	-	-	-	-	-	-	-	-	-	26.7	33.3	-	6.7	40.0	60.0	100.0
Total	10.6	6.1	9.2	1.9	0.4	0.4	2.9	0.5	15.0	4.6	2.5	0.1	3.1	0.3	23.5	9.1	5.5	4.4	72.7	27.3	100.0

Table 10: Intending Resident Arrivals by Country of Residence by Age Groups by Sex: 1st Quarter 2012

Country of Usual Residence	Age-Group																Total		
	0-14		15-24		25-34		35-44		45-54		55-64		65+		Not Stated		M	F	All
	M	F	M	F	M	F	M	F	M	F	M	F	M	F					
Australia	25	21	16	6	51	26	56	49	77	34	53	20	10	2	20	16	308	174	482
PNG	8	5	8	5	16	5	29	4	11	2	-	-	-	-	3	5	75	26	101
US	-	-	-	-	1	3	8	-	-	-	1	1	-	-	2	1	12	5	17
NZ	2	4	23	3	15	1	8	6	9	7	10	4	4	1	-	-	71	26	97
UK	-	-	-	1	6	2	-	2	5	-	1	1	1	-	1	-	14	6	20
Japan	-	-	3	1	3	3	3	1	7	-	3	1	1	-	-	-	20	6	26
Germany	-	-	-	-	-	-	-	-	-	1	-	-	1	-	-	-	1	1	2
Canada	-	-	-	-	-	-	-	-	-	-	1	-	-	-	-	-	1	-	1
Oth.Pacific	3	10	1	2	3	3	5	9	4	4	-	-	-	-	2	1	18	29	47
Vanuatu	2	1	8	5	5	3	5	3	3	-	-	1	-	-	-	-	23	13	36
Hong Kong	-	-	-	-	-	-	-	1	-	-	-	-	-	-	-	-	-	1	1
Fiji	4	5	3	5	13	5	11	6	6	8	8	1	-	-	6	1	51	31	82
Oth.Asia	7	3	21	8	100	17	117	11	99	11	48	-	4	-	27	3	423	53	476
Netherlands	-	-	-	-	-	-	-	-	1	-	-	-	-	-	-	-	1	-	1
Oth.Europe	-	-	-	-	-	3	-	-	3	2	-	-	-	-	-	-	3	5	8
France	-	-	1	-	-	1	-	-	-	-	-	-	-	-	-	-	1	1	2
Italy	-	-	-	-	-	1	-	-	1	-	-	-	-	-	-	-	1	1	2
Oth.Country	-	-	-	-	1	1	-	6	2	1	3	1	-	-	-	-	6	9	15
Total	51	49	84	36	214	74	242	98	228	70	128	30	21	3	61	27	1,029	387	1,416
	Percentage																		
Australia	5.2	4.4	3.3	1.2	10.6	5.4	11.6	10.2	16.0	7.1	11.0	4.1	2.1	0.4	4.1	3.3	63.9	36.1	100.0
PNG	7.9	5.0	7.9	5.0	15.8	5.0	28.7	4.0	10.9	2.0	-	-	-	-	3.0	5.0	74.3	25.7	100.0
US	-	-	-	-	5.9	17.6	47.1	0.0	-	-	5.9	5.9	-	-	11.8	5.9	70.6	29.4	100.0
NZ	2.1	4.1	23.7	3.1	15.5	1.0	8.2	6.2	9.3	7.2	10.3	4.1	4.1	1.0	-	-	73.2	26.8	100.0
UK	-	-	0.0	5.0	30.0	10.0	-	-	25.0	-	5.0	5.0	5.0	-	5.0	-	70.0	30.0	100.0
Japan	-	-	11.5	3.8	11.5	11.5	11.5	3.8	26.9	-	11.5	3.8	3.8	-	-	-	76.9	23.1	100.0
Germany	-	-	-	-	-	-	-	-	-	-	-	-	-	-	-	-	-	-	-
Canada	-	-	-	-	-	-	-	-	-	-	100.0	-	-	-	-	-	100.0	-	100.0
Oth.Pacific	6.4	21.3	2.1	4.3	6.4	6.4	10.6	19.1	8.5	8.5	-	-	-	-	4.3	2.1	38.3	61.7	100.0
Vanuatu	5.6	2.8	22.2	13.9	13.9	8.3	13.9	8.3	8.3	-	-	2.8	-	-	-	-	63.9	36.1	100.0
Hong Kong	-	-	-	-	-	-	-	-	-	-	-	-	-	-	-	-	-	-	-
Fiji	4.9	6.1	3.7	6.1	15.9	6.1	13.4	7.3	7.3	9.8	9.8	1.2	-	-	7.3	1.2	62.2	37.8	100.0
Oth.Asia	1.5	0.6	4.4	1.7	21.0	3.6	24.6	2.3	20.8	2.3	10.1	-	0.8	-	5.7	0.6	88.9	11.1	100.0
Netherlands	-	-	-	-	-	-	-	-	-	-	-	-	-	-	-	-	-	-	-
Oth.Europe	-	-	-	-	-	37.5	-	-	37.5	25.0	-	-	-	-	-	-	37.5	62.5	100.0
France	-	-	-	-	-	-	-	-	-	-	-	-	-	-	-	-	-	-	-
Italy	-	-	-	-	-	50.0	-	-	50.0	-	-	-	-	-	-	-	50.0	50.0	100.0
Oth.Country	-	-	-	-	6.7	6.7	-	40.0	13.3	6.7	20.0	6.7	-	-	-	-	40.0	60.0	100.0
Total	3.6	3.5	5.9	2.5	15.1	5.2	17.1	6.9	16.1	4.9	9.0	2.1	1.5	0.2	4.3	1.9	72.7	27.3	100.0

Table 11: Returning Resident Arrivals by Country of Residence by Age Groups by Sex: 1st Quarter 2012

Country of Usual Residence	Age-Group																Total		
	0-14		15-24		25-34		35-44		45-54		55-64		65+		Not Stated		M	F	All
	M	F	M	F	M	F	M	F	M	F	M	F	M	F	M	F	M	F	All
Australia	1	-	-	-	-	-	-	-	-	-	1	-	-	-	-	-	2	-	2
PNG	-	-	-	-	-	-	-	-	-	-	-	-	-	-	-	-	-	-	-
US	-	-	-	-	-	-	-	-	1	-	-	-	-	-	-	-	1	-	1
NZ	-	-	-	-	-	-	-	-	-	-	-	-	-	-	-	-	-	-	-
UK	-	-	-	-	-	-	-	-	-	-	-	-	-	-	-	-	-	-	-
Japan	-	1	3	-	4	-	4	1	-	-	1	-	-	-	-	-	12	2	14
Germany	-	-	-	-	-	-	-	-	-	-	-	-	-	-	-	-	-	-	-
Canada	-	-	-	-	-	-	-	-	-	-	-	-	-	-	-	-	-	-	-
Oth.Pacific	-	-	-	-	-	-	-	-	-	-	-	-	-	-	-	-	-	-	-
Vanuatu	-	-	-	-	-	-	-	-	-	-	-	-	-	-	-	-	-	-	-
Hong Kong	-	-	-	-	-	-	-	-	-	-	-	-	-	-	-	-	-	-	-
Fiji	-	-	-	-	-	-	-	-	-	-	-	-	-	-	-	-	-	-	-
Oth.Asia	-	-	-	-	-	-	-	-	-	-	-	-	-	-	-	-	-	1	1
Netherlands	-	-	-	-	-	-	-	-	-	-	-	-	-	-	-	-	-	-	-
Oth.Europe	-	-	-	-	-	-	-	-	-	-	-	-	-	-	-	-	-	-	-
France	-	-	-	-	-	-	-	-	-	-	-	-	-	-	-	-	-	-	-
Italy	-	-	-	-	-	-	-	-	-	-	-	-	-	-	-	-	-	-	-
Oth.Country	-	-	-	-	-	-	-	-	-	-	-	-	-	-	-	-	-	-	-
Solomon Is.	151	109	186	138	368	233	455	211	373	151	210	68	62	17	110	67	1,915	994	2,909
Total	152	110	189	139	372	233	459	212	374	151	212	68	62	17	110	67	1,930	997	2,927
<u>Percentage</u>																			
Australia	50.0	-	-	-	-	-	-	-	-	-	50.0	-	-	-	-	-	100.0	-	100.0
PNG	-	-	-	-	-	-	-	-	-	-	-	-	-	-	-	-	-	-	-
US	-	-	-	-	-	-	-	-	100.0	-	-	-	-	-	-	-	100.0	0.0	100.0
NZ	-	-	-	-	-	-	-	-	-	-	-	-	-	-	-	-	-	-	-
UK	-	-	-	-	-	-	-	-	-	-	-	-	-	-	-	-	-	-	-
Japan	-	7.1	21.4	-	28.6	-	28.6	7.1	-	-	7.1	-	-	-	-	-	85.7	14.3	100.0
Germany	-	-	-	-	-	-	-	-	-	-	-	-	-	-	-	-	-	-	-
Canada	-	-	-	-	-	-	-	-	-	-	-	-	-	-	-	-	-	-	-
Oth.Pacific	-	-	-	-	-	-	-	-	-	-	-	-	-	-	-	-	-	-	-
Vanuatu	-	-	-	-	-	-	-	-	-	-	-	-	-	-	-	-	-	-	-
Hong Kong	-	-	-	-	-	-	-	-	-	-	-	-	-	-	-	-	-	-	-
Fiji	-	-	-	-	-	-	-	-	-	-	-	-	-	-	-	-	-	-	-
Oth.Asia	-	-	-	-	-	-	-	-	-	-	-	-	-	-	-	-	-	-	-
Netherlands	-	-	-	-	-	-	-	-	-	-	-	-	-	-	-	-	-	-	-
Oth.Europe	-	-	-	-	-	-	-	-	-	-	-	-	-	-	-	-	-	-	-
France	-	-	-	-	-	-	-	-	-	-	-	-	-	-	-	-	-	-	-
Italy	-	-	-	-	-	-	-	-	-	-	-	-	-	-	-	-	-	-	-
Oth.Country	-	-	-	-	-	-	-	-	-	-	-	-	-	-	-	-	-	-	-
Solomon Is.	5.2	3.7	6.4	4.7	12.7	8.0	15.6	7.3	12.8	5.2	7.2	2.3	2.1	0.6	3.8	2.3	65.8	34.2	100.0
Total	5.2	3.8	6.5	4.7	12.7	8.0	15.7	7.2	12.8	5.2	7.2	2.3	2.1	0.6	3.8	2.3	65.9	34.1	100.0

Table 12: Returning Resident Arrivals by Country of Residence by Occupation and Sex: 1st Quarter 2012

Country of Usual Residence	Professional and Technical		Administration and Managerial		Clerical & Related Work		Sales Worker		Service Worker		Agriculture Forestry Fishery		Production & Related Work		Other		No Work		Total		
	M	F	M	F	M	F	M	F	M	F	M	F	M	F	M	F	M	F	M	F	All
	Australia	1	-	-	-	-	-	-	-	-	-	-	-	-	-	-	-	1	-	2	-
PNG	-	-	-	-	-	-	-	-	-	-	-	-	-	-	-	-	-	-	-	-	-
US	-	-	-	-	-	-	-	-	-	-	-	-	-	-	1	-	-	-	1	-	1
NZ	-	-	-	-	-	-	-	-	-	-	-	-	-	-	-	-	-	-	-	-	-
UK	-	-	-	-	-	-	-	-	-	-	-	-	-	-	-	-	-	-	-	-	-
Japan	7	1	-	-	-	-	-	-	-	-	-	-	-	-	3	1	-	-	12	2	14
Germany	-	-	-	-	-	-	-	-	-	-	-	-	-	-	-	-	-	-	-	-	-
Canada	-	-	-	-	-	-	-	-	-	-	-	-	-	-	-	-	-	-	-	-	-
Oth.Pacific	-	-	-	-	-	-	-	-	-	-	-	-	-	-	-	-	-	-	-	-	-
Vanuatu	-	-	-	-	-	-	-	-	-	-	-	-	-	-	-	-	-	-	-	-	-
Hong Kong	-	-	-	-	-	-	-	-	-	-	-	-	-	-	-	-	-	-	-	-	-
Fiji	-	-	-	-	-	-	-	-	-	-	-	-	-	-	-	-	-	-	-	-	-
Oth.Asia	-	-	-	-	-	-	-	-	-	-	-	-	-	-	-	-	-	-	-	1	1
Netherlands	-	-	-	-	-	-	-	-	-	-	-	-	-	-	-	-	-	-	-	-	-
Oth.Europe	-	-	-	-	-	-	-	-	-	-	-	-	-	-	-	-	-	-	-	-	-
France	-	-	-	-	-	-	-	-	-	-	-	-	-	-	-	-	-	-	-	-	-
Italy	-	-	-	-	-	-	-	-	-	-	-	-	-	-	-	-	-	-	-	-	-
Oth.Country	-	-	-	-	-	-	-	-	-	-	-	-	-	-	-	-	-	-	-	-	-
Solomon Is.	664	346	288	85	25	26	43	7	44	146	30	8	54	9	611	263	156	104	1,915	994	2,909
Total	672	348	290	85	25	26	43	7	44	146	30	8	54	9	615	264	157	104	1,930	997	2,927
<u>Percentage</u>																					
Australia	-	-	-	-	-	-	-	-	-	-	-	-	-	-	-	-	-	-	-	-	-
PNG	-	-	-	-	-	-	-	-	-	-	-	-	-	-	-	-	-	-	-	-	-
US	-	-	-	-	-	-	-	-	-	-	-	-	-	-	100.0	-	-	-	100.0	-	100.0
NZ	-	-	-	-	-	-	-	-	-	-	-	-	-	-	-	-	-	-	-	-	-
UK	-	-	-	-	-	-	-	-	-	-	-	-	-	-	-	-	-	-	-	-	-
Japan	50.0	7.1	14.3	-	-	-	-	-	-	-	-	-	-	-	21.4	7.1	-	-	85.7	14.3	100.0
Germany	-	-	-	-	-	-	-	-	-	-	-	-	-	-	-	-	-	-	-	-	-
Canada	-	-	-	-	-	-	-	-	-	-	-	-	-	-	-	-	-	-	-	-	-
Oth.Pacific	-	-	-	-	-	-	-	-	-	-	-	-	-	-	-	-	-	-	-	-	-
Vanuatu	-	-	-	-	-	-	-	-	-	-	-	-	-	-	-	-	-	-	-	-	-
Hong Kong	-	-	-	-	-	-	-	-	-	-	-	-	-	-	-	-	-	-	-	-	-
Fiji	-	-	-	-	-	-	-	-	-	-	-	-	-	-	-	-	-	-	-	-	-
Oth.Asia	-	-	-	-	-	-	-	-	-	-	-	-	-	-	-	-	-	-	-	-	-
Netherlands	-	-	-	-	-	-	-	-	-	-	-	-	-	-	-	-	-	-	-	-	-
Oth.Europe	-	-	-	-	-	-	-	-	-	-	-	-	-	-	-	-	-	-	-	-	-
France	-	-	-	-	-	-	-	-	-	-	-	-	-	-	-	-	-	-	-	-	-
Italy	-	-	-	-	-	-	-	-	-	-	-	-	-	-	-	-	-	-	-	-	-
Oth.Country	-	-	-	-	-	-	-	-	-	-	-	-	-	-	-	-	-	-	-	-	-
Solomon Is.	22.8	11.9	9.9	2.9	0.9	0.9	1.5	0.2	1.5	5.0	1.0	0.3	1.9	0.3	21.0	9.0	5.4	3.6	65.8	34.2	100.0
Total	23.0	11.9	9.9	2.9	0.9	0.9	1.5	0.2	1.5	5.0	1.0	0.3	1.8	0.3	21.0	9.0	5.4	3.6	65.9	34.1	100.0