



Solomon Islands Government

Statistical Bulletin: No: 10/2013

VISITOR STATISTICS

(Second Quarter 2013)

Solomon Islands National Statistics Office

Ministry of Finance

Honiara

TABLE OF CONTENTS

Introduction.....	3
COMMENTARY OF RESULTS	5
<i>International Arrivals</i>	5
<i>Arrivals by Country of Residence</i>	5
<i>Visitor by Month</i>	5
<i>Tourists</i>	5
<i>Visitors by Purpose of Visit</i>	5
<i>Visitor by Age Group</i>	5
<i>Visitor by Occupation:</i>	5
<i>Visitor by Carrier</i>	5

Charts

Chart 1: Arrivals by Category, 2 nd Quarter 2013	6
Chart 2: Visitor Arrivals by Country of Residence by quarter: 2 nd Quarter 2013.....	7
Chart 3: Visitor Arrivals by Month, 2010 to 2 nd Quarter 2013	8
Chart 4: Tourist Arrivals by Country of Residence, 2 nd Quarter 2013.....	9
Chart 5: Visitor Arrivals by Country of Residence by Purpose of Visit, 2 nd Quarter 2013.....	10
Chart 6: Visitor Arrivals by Age group category by sex, 2 nd Quarter 2013.....	11
Chart 7: Visitor Arrivals by Occupation by sex, 2 nd Quarter 2013.....	12
Chart 8: Visitor Arrivals by Carrier by sex, 2 nd Quarter 2013.....	13

Tables

Table 1: Total Arrivals Classified by Purpose of Travel by Sex by Year by Quarter: 2 nd Quarter 2013	6
Table 2: Visitors Arrivals by Country of Residence by Year by Quarter: 2 nd Quarter 2013.....	7
Table 3: Visitors Arrivals by Month: 2006 to 2 nd Quarter 2013	8
Table 4: Visitors Classified as Tourists by Country of Residence by Year, Quarter and Average Length	9
of Stay: 2010 to 2 nd Quarter 2013	9
Table 5: Visitor Arrivals by Country of Residence by Purpose of Visit by sex: 2 nd Quarter 2013	10
Table 6: Visitors Arrivals by Country of Residence by Age Groups by sex: 2 nd Quarter 2013	11
Table 7: Visitors Arrivals by Country of Residence by Occupation and Sex: 2 nd Quarter 2013.....	12
Table 8: Visitors Arrivals by Country of Residence by Carrier By Sex: 2 nd Quarter 2013.....	13

Appendix 1	14
<i>Concepts and Definitions</i>	14
Appendix 2.....	15

Table 9: Intending Resident Arrivals by Country of residence by Occupation and sex: 2 nd Quarter 2013	15
Table 10: Intending Resident Arrivals by country of Residence by Age Groups by Sex: 2 nd Quarter 2013.....	16
Table 11: Returning Resident Arrivals by country of Residence by Age Groups and sex: 2 nd Quarter 2013	17
Table 12: Returning Resident Arrivals by country of Residence by Occupation and sex: 2 nd Quarter 2013	18

Introduction

This quarterly bulletin is produced by the National Statistics Office NSO in the Ministry of Finance and Treasury. It provides information on international arrivals comprised of the returning resident, intending resident, and visitor. The explanation of these categories is provided in Appendix 1 of the bulletin.

Visitor category comprised the bigger share of the bulletin, (portrayed in tables 1 to 8); compared to the returning and intending resident category portrayed in Tables 1, and 9 to 12. The bulletin includes twelve tables and eight charts stretched over cross-field tabulation, preferably to meet information need of local, regional, and international researchers.

The information captured through a self fill Disembarkation form that was completed by all disembarking passengers. The forms were collected by Immigration officials at international check-in counters on arrival. The coverage of the bulletin is complete.

Sheer acknowledgement is owed to the Immigration Department for their continuous support of this bulletin, by providing an office space and permitting the statistics office to input completed forms. With the official arrangement in-placed between the Statistics and Immigration departments this bulletin is possible.

The inclusion of four new tables 9 to 12 in Appendix 2 of the bulletin anticipates to complete the distribution portrait of Intending and Returning resident. The distribution is by age groups, occupation and by country of usual residence.

Data limitations, highlighted in the previous bulletin still remain, though some have substantially improved but noted again for ease of reference as follows:-

- Data entry duplication by the Immigration and Statistics departments was a long standing issue. Discussion of the issues had been made by the two departments, though resolution has been recognized, this was yet to be put in place.
- Timeliness of visitor statistics has improved but the bulletin may be delayed by the production process.
- The information contained in the bulletin is based on information captured from the data source by the SINSO.
- The monetary value of the industry is not available and thus not possible in this bulletin. The concepts and definitions of the arrival categories were included in Appendix 1. The symbols that are likely to be used are:

-	zero if representing a value
-	negative change if representing a percentage change
+	positive change if representing a percentage change
p	preliminary figure, subject to revision
r	revised
e	estimate
n/a	not available

For more information contact the Statistics Office, Department of Finance and Treasury:

TELEPHONE : (677) 22154/21427

FACSMILE : (677) 23775

E-MAIL : STATS-management@mof.gov.sb

: STATS-SocialDemography@mof.gov.sb

WEBSITE : **<http://www.spc.int/prism/country/sb/stats>**

Contact persons: 1. Mrs. Irene KALAUMA, Chief Statistician – (Social)

2. Mrs. Anterlyn TUZAKANA, Senior Statistician – (Social)

COMMENTARY OF RESULTS

International Arrivals

Total Arrivals for the Second quarter of 2013 was 11,007. This figure showed an increase of 13.5% compared to the previous quarter (1st Quarter 2013). Compared to the same quarter last year, it showed a decrease of 5.4%.

Arrivals classified by the category for the second quarter of 2013 showed that returning resident comprise of 34%. Visitors recorded 56% and the remaining 10% was recorded for intending resident.

Visitor arrivals for the second quarter showed an increase of 16.5% to 6,195 compared to the first quarter 2013 figure of 5,318. Compared to the same quarter in 2012 it showed a decrease of 10.6%. Table 1 showed, visitor and returning resident categories comprised the larger proportion of all arrivals while the intending resident represents the lesser share during the quarter. Chart 1, gives a clear picture of all the categories.

Visitor by Country of Residence

Arrivals by country of residence for second quarter showed that Australians (49.2%) are frequent travellers to Solomon Islands as in the previous quarters, followed by Other Asia (10.6%), New Zealand (8.6%), Fiji (6.8%), PNG (6.7%), US (5.2%) and Vanuatu (3.0%).

Visitor by Month

Visitors by monthly arrivals for second quarter showed that June has the highest number of arrivals with 2,317 persons. This was followed by the month of April with a recorded total of 2,021 persons and May the least with 1,857 persons.

Tourists

Tourist¹ arrivals for second quarter of the year totalled to 1,588 persons and they spent an average of 13 days in the country. The highest number of tourists recorded for the quarter comes from Australia (61.8%) and staying in the country for an average of 11 days. This was followed by USA (8.6%), Other Asia (7.5%), New Zealand (6%), PNG and UK (2.5%) and Japan and Other Europe (2.1%).

Visitor by Purpose of Visit

Distribution of visitors by purpose of visit revealed that 'Other' (32.7%) as most popular during the quarter. This was followed by Business & Conference (29.9%), Holiday & Vocation (24.8%), Visit friends & relatives (11.8%) and Transit & stopover the least with 0.8%.

Visitor by Age Group

Visitor Arrivals by broad age groups showed that 77.8% of arrivals were in the 25years to 64years age range. The younger and the older age brackets represent 18.4% while the remaining 3.8% represents arrivals who did not state their age. Male represent 73.1% of the arrival and female 26.9%. (Refer to Chart 6)

Visitor by Occupation

Visitor by occupational category revealed that those who stated 'Other' (37.9%) as their occupation recorded the highest during the quarter. This was followed by Professional & Technical (34.3%), Administration and managerial (8.7%), No work (7.2%), Production & Related Work (4.5%), and Service worker (4.1%). Table 7 further revealed that Australia not only dominated the Arrivals in terms of markets but also dominated most of the categories of occupations during the quarter. Refer to Table 7 for further analysis.

Visitor by Carrier

The most popular carriers during the quarter were Solomon Airlines (51.9%) followed by Virgin Australia (26.9%), Air Niu Gini (12%) and Air Pacific (8.1%).

¹ Refer to Appendix 1 for the definition

Table 1: Total Arrivals Classified by Purpose of Travel by Sex, by Year by Quarter: 2nd Quarter 2013

Year / Quarter	Returning Resident							Intending Resident				Visitor			Total		
	Solomon Islander			Non-Solomon Islander				All	M	F	T	M	F	T	M	F	All
	M	F	T	M	F	T											
2007 3 rd	1,826	929	2,755	59	12	71	2,826	487	172	659	2,195	1,225	3,420	4,567	2,338	6,905	
4 th	2,107	1,095	3,202	486	235	721	3,923	589	153	742	2,525	1,132	3,657	5,707	2,615	8,322	
2008 1 st	1,537	938	2,475	4	2	6	2,481	537	174	711	2,094	879	2,973	4,172	1,993	6,165	
2 nd	2,492	1,268	3,760	3	1	4	3,764	312	87	399	2,857	1,344	4,201	5,664	2,700	8,364	
3 rd	1,593	952	2,545	761	437	1,198	3,743	605	155	760	3,138	1,480	4,618	6,097	3,024	9,121	
4 th	2,507	1,366	3,873	969	453	1,422	5,295	396	125	521	3,063	1,409	4,472	6,935	3,353	10,288	
2009 1 st	1,173	760	1,933	677	436	1,113	3,046	659	315	974	3,015	1,258	4,273	5,524	2,769	8,293	
2 nd	1,427	728	2,155	471	238	709	2,864	611	244	855	3,242	1,374	4,616	5,751	2,584	8,335	
3 rd	1,182	709	1,891	425	220	645	2,536	786	355	1,141	3,263	1,519	4,782	5,656	2,803	8,459	
4 th	2,145	1,152	3,297	393	197	590	3,887	722	282	1,004	3,177	1,412	4,589	6,437	3,043	9,480	
2010 1 st	1,045	695	1,740	550	342	892	2,632	808	380	1,188	3,115	1,095	4,210	5,518	2,512	8,030	
2 nd	1,337	707	2,044	494	272	766	2,810	808	307	1,115	3,370	1,384	4,754	6,009	2,670	8,679	
3 rd	1,421	730	2,151	485	274	759	2,910	835	316	1,151	4,494	1,768	6,262	7,235	3,088	10,323	
4 th	2,783	1,550	4,333	13	4	17	4,350	848	284	1,132	3,766	1,529	5,295	7,410	3,367	10,777	
2011 1 st	1,187	724	1,911	694	332	1,026	2,937	1,058	362	1,420	3,972	1,147	5,119	6,911	2,565	9,476	
2 nd	1,601	880	2,481	615	292	907	3,388	716	258	974	4,071	1,434	5,505	7,003	2,864	9,867	
3 rd	1,716	739	2,455	642	282	924	3,379	930	275	1,205	4,523	1,721	6,244	7,811	3,017	10,828	
4 th	3,297	1,765	5,062	4	2	6	5,068	805	268	1,073	4,341	1,732	6,073	8,447	3,767	12,214	
2012 1 st	1,915	994	2,909	15	3	18	2,927	1,029	387	1,416	3,554	1,097	4,651	6,513	2,481	8,994	
2 nd	1,782	967	2,749	667	312	979	3,728	695	278	973	4,921	2,008	6,929	8,065	3,565	11,630	
3 rd	2,169	1,218	3,387	22	12	34	3,421	840	255	1,095	5,123	2,184	7,307	8,154	3,669	11,823	
4 th	3,192	1,784	4,976	5	1	6	4,982	631	215	846	3,572	1,466	5,038	7,400	3,466	10,866	
2013 1 st	1,966	1,111	3,077	6	-	6	3,083	961	338	1,299	4,034	1,284	5,318	6,967	2,733	9,700	
2 nd	2,422	1,344	3,766	1	2	3	3,769	764	279	1,043	4,531	1,664	6,195	7,718	3,289	11,007	
Percentage change																	
09 ^{3rd} -09 ^{4th}	81.5	62.5	74.4	-7.5	-10.5	-8.5	53.3	-8.1	-20.6	-12.0	-2.6	-7.0	-4.0	13.8	8.6	12.1	
08 ^{4th} -09 ^{4th}	-14.4	-15.7	-14.9	-59.4	-56.5	-58.5	-26.6	82.3	125.6	92.7	3.7	0.2	2.6	-7.2	-9.2	-7.9	
09 ^{4th} -10 ^{1st}	-51.3	-39.7	-47.2	39.9	73.6	51.2	-32.3	11.9	34.8	18.3	-2.0	-22.5	-8.3	-14.3	-17.4	-15.3	
09 ^{1st} -10 ^{1st}	-10.9	-8.6	-10.0	-18.8	-21.6	-19.9	-13.6	22.6	20.6	22.0	3.3	-13.0	-1.5	-0.1	-9.3	-3.2	
10 ^{2nd} -10 ^{3rd}	6.3	3.3	5.2	-1.8	0.7	-0.9	3.6	3.3	2.9	3.2	33.4	27.7	31.7	20.4	15.7	18.9	
09 ^{3rd} -10 ^{3rd}	20.2	3.0	13.7	14.1	24.5	17.7	14.7	6.2	-11.0	0.9	37.7	16.4	30.9	27.9	10.2	22.0	
09 ^{4th} -10 ^{4th}	29.7	34.5	31.4	-96.7	-98.0	-97.1	11.9	17.5	0.7	12.7	18.5	8.3	15.4	15.1	10.6	13.7	
10 ^{1st} -11 ^{1st}	13.6	4.2	9.8	26.2	-2.9	15.0	11.6	30.9	-4.7	19.5	27.5	4.7	21.6	25.2	2.1	18.0	
10 ^{4th} -11 ^{1st}	-57.3	-53.3	-55.9	5238.5	8200.0	5935.3	-32.5	24.8	27.5	25.4	5.5	-25.0	-3.3	-6.7	-23.8	-12.1	
11 ^{1st} -11 ^{2nd}	34.9	21.5	29.8	-11.4	-12.0	-11.6	15.4	-32.3	-28.7	-31.4	2.5	25.0	7.5	1.3	11.7	4.1	
11 ^{2nd} -11 ^{3rd}	7.2	-16.0	-1.0	4.4	-3.4	1.9	-0.3	29.9	6.6	23.7	11.1	20.0	13.4	11.5	5.3	9.7	
11 ^{3rd} -11 ^{4th}	92.1	138.8	106.2	-99.4	-99.3	-99.4	50.0	-13.4	-2.5	-11.0	-4.0	0.6	-2.7	8.1	24.9	12.8	
11 ^{4th} -12 ^{1st}	-41.9	-43.7	-42.5	275.0	50.0	200.0	-42.2	27.8	44.4	32.0	-18.1	-36.7	-23.4	-22.9	-34.1	-26.4	
11 ^{2nd} -12 ^{2nd}	11.3	9.9	10.8	8.5	6.8	7.9	10.0	-2.9	7.8	-0.1	20.9	40.0	25.9	15.2	24.5	17.9	
12 ^{1st} -12 ^{2nd}	-6.9	-2.7	-5.5	4346.7	10300.0	5338.9	27.4	-32.5	-28.2	-31.3	38.5	83.0	49.0	23.8	43.7	29.3	
11 ^{3rd} -12 ^{3rd}	26.4	64.8	38.0	-96.6	-95.7	-96.3	1.2	-9.7	-7.3	-9.1	13.3	26.9	17.0	4.4	21.6	9.2	
12 ^{2nd} -12 ^{3rd}	21.7	26.0	23.2	-96.7	-96.2	-96.5	-8.2	20.9	-8.3	12.5	4.1	8.8	5.5	1.1	2.9	1.7	
11 ^{4th} -12 ^{4th}	-3.2	1.1	-1.7	25.0	-50.0	0.0	-1.7	-21.6	-19.8	-21.2	-17.7	-15.4	-17.0	-12.4	-8.0	-11.0	
12 ^{3rd} -12 ^{4th}	47.2	46.5	46.9	-77.3	-91.7	-82.4	45.6	-24.9	-15.7	-22.7	-30.3	-32.9	-31.1	-9.2	-5.5	-8.1	
12 ^{1st} -13 ^{1st}	2.7	11.8	5.8	-60.0	-100.0	-66.7	5.3	-6.6	-12.7	-8.3	13.5	17.0	14.3	7.0	10.2	7.8	
12 ^{4th} -13 ^{1st}	-38.4	-37.7	-38.2	20.0	-100.0	0.0	-38.1	52.3	57.2	53.5	12.9	-12.4	5.6	-5.9	-21.1	-10.7	
12 ^{2nd} -13 ^{2nd}	35.9	39.0	37.0	-99.9	-99.4	-99.7	1.1	9.9	0.4	7.2	-7.9	-17.1	-10.6	-4.3	-7.7	-5.4	
13 ^{1st} -13 ^{2nd}	23.2	21.0	22.4	-83.3	-	-50.0	22.3	-20.5	-17.5	-19.7	12.3	29.6	16.5	10.8	20.3	13.5	

Chart 1: Arrivals by category 2nd quarter 2013

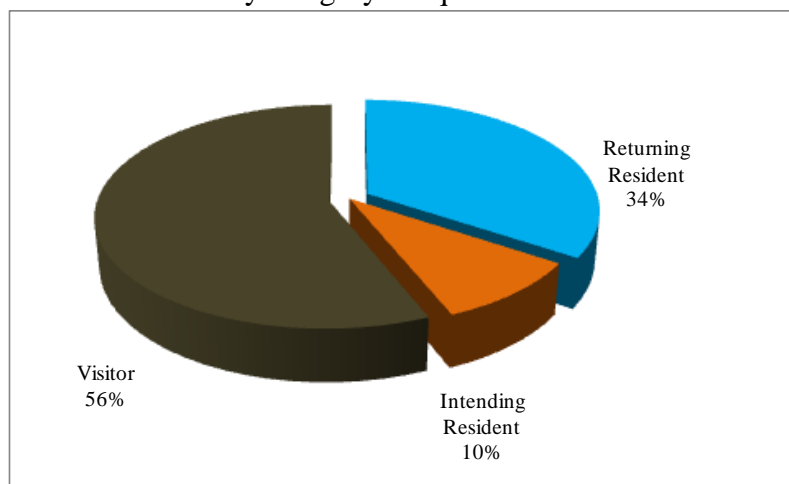


Table 2: Visitor Arrivals by Country of Residence by year by quarter: 2nd Quarter 2013

Country of Usual Residence	2009		2010					2011					2012				2013		
	Q4	Total	Q1	Q2	Q3	Q4	Total	Q1	Q2	Q3	Q4	Total	Q1	Q2	Q3	Q4	Q1	Q2	
Australia	2,235	8,902	2,087	2,544	3,362	2,758	10,751	2,569	2,763	3,042	3,018	11,392	2,238	2,963	3,404	2,474	2,282	3,049	
PNG	356	1,098	305	248	339	469	1,361	443	479	589	546	2,057	431	602	476	464	458	417	
US	249	1,034	127	236	287	212	862	188	243	368	241	1,040	183	356	561	234	231	325	
NZ	298	1,364	274	335	647	454	1,710	385	433	479	427	1,724	285	545	560	357	381	531	
UK	75	419	82	108	141	101	432	78	110	101	91	380	81	84	151	69	104	110	
Japan	380	873	166	95	151	177	589	145	106	229	161	641	162	112	211	129	128	116	
Germany	23	100	24	33	26	18	101	22	26	38	25	111	22	40	29	26	33	19	
Canada	24	88	32	22	25	34	113	51	30	55	56	192	29	25	30	27	28	35	
Oth.Pacific	144	950	167	125	123	170	585	185	185	170	223	763	101	811	371	135	188	142	
Vanuatu	85	308	48	86	126	145	405	125	103	100	185	513	121	148	179	147	250	185	
Hong Kong	-	17	10	-	23	5	38	12	12	22	84	130	14	20	21	25	16	18	
Fiji	188	917	206	278	273	234	991	262	327	285	330	1,204	300	510	444	301	451	424	
Other Asia	317	1,409	503	477	509	336	1,825	487	523	562	484	2,056	500	544	577	484	623	655	
Netherlands	15	51	11	9	16	17	53	18	13	20	13	64	12	11	23	11	10	6	
Oth.Europe	91	374	78	63	100	66	307	60	62	63	61	246	76	74	121	50	53	57	
France	27	81	12	24	24	22	82	10	20	22	8	60	24	19	36	9	21	21	
Italy	27	66	4	3	13	19	39	13	17	20	30	80	13	12	40	28	16	18	
Oth.Country	55	209	74	68	77	58	277	66	53	79	90	288	59	53	73	68	45	67	
Total	4,589	18,260	4,210	4,754	6,262	5,295	20,521	5,119	5,505	6,244	6,073	22,941	4,651	6,929	7,307	5,038	5,318	6,195	
Percentage																			
Australia	48.7	48.8	49.6	53.5	53.7	52.1		50.2	50.2	48.7	49.7	49.7	48.1	42.8	46.6	49.1	42.9	49.2	
PNG	7.8	6.0	7.2	5.2	5.4	8.9		8.7	8.7	9.4	9.0	9.0	9.3	8.7	6.5	9.2	8.6	6.7	
US	5.4	5.7	3.0	5.0	4.6	4.0		3.7	4.4	5.9	4.0	4.5	3.9	5.1	7.7	4.6	4.3	5.2	
NZ	6.5	7.5	6.5	7.0	10.3	8.6		7.5	7.9	7.7	7.0	7.5	6.1	7.9	7.7	7.1	7.2	8.6	
UK	1.6	2.3	1.9	2.3	2.3	1.9		1.5	2.0	1.6	1.5	1.7	1.7	1.2	2.1	1.4	2.0	1.8	
Japan	8.3	4.8	3.9	2.0	2.4	3.3		2.8	1.9	3.7	2.7	2.8	3.5	1.6	2.9	2.6	2.4	1.9	
Germany	0.5	0.5	0.6	0.7	0.4	0.3		0.4	0.5	0.6	0.4	0.5	0.5	0.6	0.4	0.5	0.6	0.3	
Canada	0.5	0.5	0.8	0.5	0.4	0.6		1.0	0.5	0.9	0.9	0.8	0.6	0.4	0.4	0.5	0.5	0.6	
Oth.Pacific	3.1	5.2	4.0	2.6	2.0	3.2		3.6	3.4	2.7	3.7	3.3	2.2	11.7	5.1	2.7	3.5	2.3	
Vanuatu	1.9	1.7	1.1	1.8	2.0	2.7		2.4	1.9	1.6	3.0	2.2	2.6	2.1	2.4	2.9	4.7	3.0	
Hong Kong	0.0	0.1	0.2	-	0.4	0.1		0.2	0.2	0.4	1.4	0.6	0.3	0.3	0.3	0.5	0.3	0.3	
Fiji	4.1	5.0	4.9	5.8	4.4	4.4		5.1	5.9	4.6	5.4	5.2	6.5	7.4	6.1	6.0	8.5	6.8	
Other Asia	6.9	7.7	11.9	10.0	8.1	6.3		9.5	9.5	9.0	8.0	9.0	10.8	7.9	7.9	9.6	11.7	10.6	
Netherlands	0.3	0.3	0.3	0.2	0.3	0.3		0.4	0.2	0.3	0.2	0.3	0.3	0.2	0.3	0.2	0.2	0.1	
Oth.Europe	2.0	2.0	1.9	1.3	1.6	1.2		1.2	1.1	1.0	1.0	1.1	1.6	1.1	1.7	1.0	1.0	0.9	
France	0.6	0.4	0.3	0.5	0.4	0.4		0.2	0.4	0.4	0.1	0.3	0.5	0.3	0.5	0.2	0.4	0.3	
Italy	0.6	0.4	0.1	0.1	0.2	0.4		0.3	0.3	0.3	0.5	0.3	0.3	0.2	0.5	0.6	0.3	0.3	
Oth.Country	1.2	1.1	1.8	1.4	1.2	1.1		1.3	1.0	1.3	1.5	1.3	1.3	0.8	1.0	1.3	0.8	1.1	
Total	100	100	100	100	100	100.0		100.0	100.0	100.0	100.0	100.0	100.0	100.0	100.0	100.0	100.0	100.0	

Chart 2: Visitors Arrival by Country of residence by quarter, 2nd quarter 2013

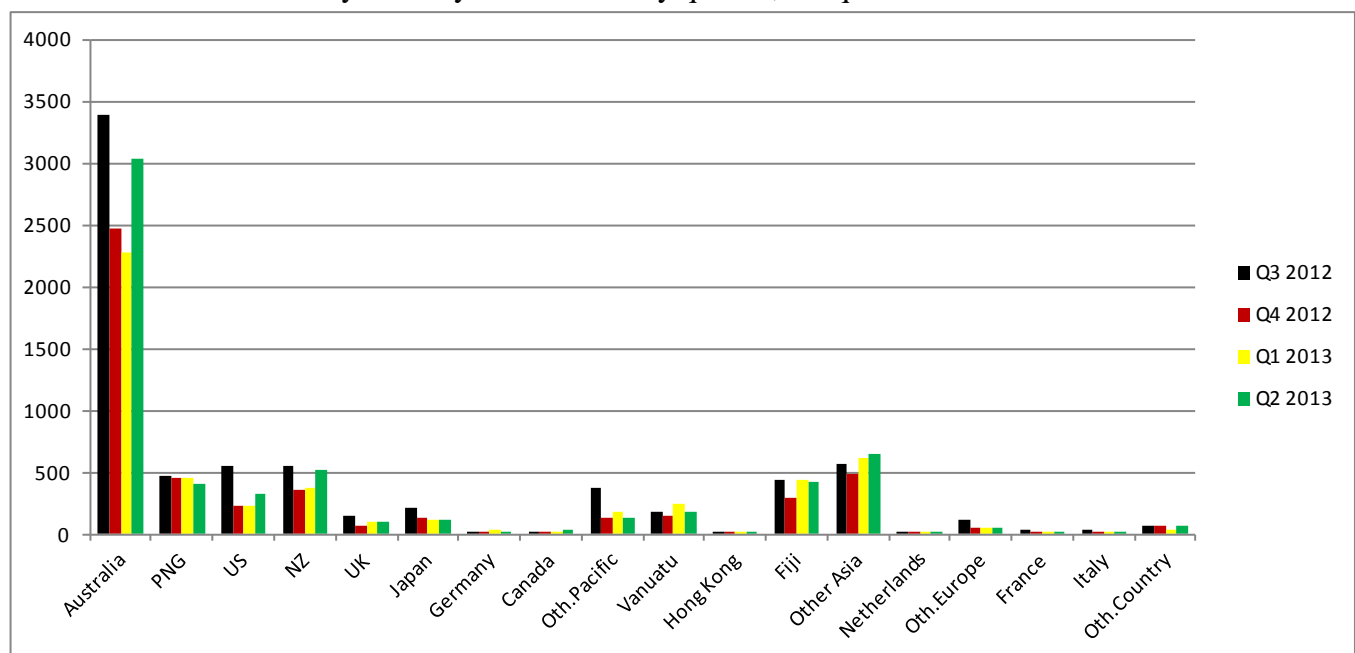


Table 3: Visitor Arrivals by Month: 2006 – 2nd Quarter 2013

Month	2006	2007	2008	2009	2010	2011	2012	2013
January	952	546	889	1,602	1,235	1,600	1,383	1,590
February	838	1,020	1,282	1,422	1,209	1,658	1,591	1,544
March	972	1,251	802	1,249	1,766	1,861	1,677	2,184
April	994	1,452	1,388	1,499	1,820	1,736	1,839	2,021
May	858	1,137	1,261	1,393	1,137	1,760	1,968	1,857
June	1,289	1,265	1,552	1,724	1,797	2,009	3,122	2,317
July	865	822	1,692	1,603	2,264	2,185	2,865	
August	892	1,299	1,469	1,520	1,845	1,900	2,133	
September	681	1,299	1,457	1,659	2,153	2,159	2,309	
October	942	1,260	1,399	1,709	1,813	1,931	1,929	
November	1,118	1,246	1,545	1,475	1,624	2,195	1,545	
December	1,081	1,151	1,528	1,405	1,858	1,947	1,564	
Total	11,482	13,748	16,264	18,260	20,521	22,941	23,925	11,513
Percentage								
January	8.3	4.0	5.5	8.8	5.5	7.0	5.8	13.8
February	7.3	7.4	7.9	7.8	5.4	7.2	6.6	13.4
March	8.5	9.1	4.9	6.8	7.8	8.1	7.0	19.0
April	8.7	10.6	8.5	8.2	8.1	7.6	7.7	17.6
May	7.5	8.3	7.8	7.6	5.0	7.7	8.2	16.1
June	11.2	9.2	9.5	9.4	8.0	8.8	13.0	20.1
July	7.5	6.0	10.4	8.8	10.0	9.5	12.0	
August	7.8	9.4	9.0	8.3	8.2	8.3	8.9	
September	5.9	9.4	9.0	9.1	9.6	9.4	9.7	
October	8.2	9.2	8.6	9.4	8.0	8.4	8.1	
November	9.7	9.1	9.5	8.1	7.2	9.6	6.5	
December	9.4	8.4	9.4	7.7	8.2	8.5	6.5	
Total	100	100.0	100.0	100.0	100.0	100.0	100.0	100.0

Chart 3: Visitors Arrival by month, 2010 – 2nd quarter 2013

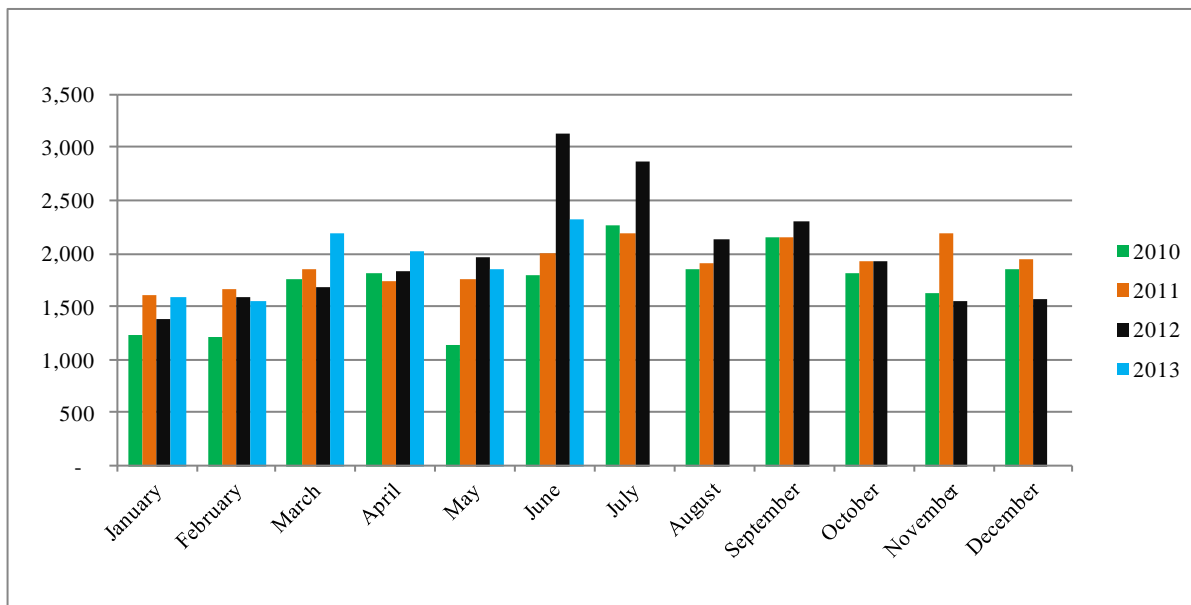


Table 4: Visitors, classified as tourists by Country of residence by year, quarter and average length of stay: 4th Quarter 2010 – 2nd Quarter 2013

Country of Usual Residence	2010		2011								2012								2013			
	Quarter 4		Quarter 1		Quarter 2		Quarter 3		Quarter 4		Quarter 1		Quarter 2		Quarter 3		Quarter 4		Quarter 1		Quarter 2	
	tourist	day	tourist	day	tourist	day	tourist	day	tourist	day	tourist	day	tourist	day	tourist	day	tourist	day	tourist	day	tourist	day
Australia	854	15	611	14	872	13	1,034	15	915	20	511	12	891	13	1193	12	808	14	507	13	981	11
PNG	60	27	34	13	53	15	72	16	67	30	23	14	54	13	58	15	66	20	43	10	39	12
US	114	13	91	11	104	16	191	13	102	13	65	10	182	12	251	10	116	11	75	11	136	12
NZ	65	19	29	23	56	15	102	17	70	20	24	11	69	13	115	12	57	16	30	15	95	15
UK	54	13	26	19	49	25	42	23	34	16	25	18	28	32	36	20	40	18	31	25	39	21
Japan	94	6	45	12	24	10	95	15	51	7	53	7	41	7	92	9	52	7	38	13	33	19
Germany	13	14	15	35	12	13	24	17	17	12	14	18	21	20	15	12	12	17	25	13	9	11
Canada	11	14	27	17	8	23	14	14	28	15	8	15	10	22	12	15	13	11	14	20	12	10
Oth.Pacific	23	27	19	15	14	12	15	16	21	23	11	14	38	14	68	13	7	17	18	10	16	15
Vanuatu	12	14	20	15	13	14	20	17	27	25	21	7	15	10	19	10	25	19	50	6	17	8
Hong Kong	2	3	5	5	7	8	11	12	23	19	3	18	6	16	8	9	10	20	6	11	8	21
Fiji	21	29	15	13	23	18	26	20	20	21	22	19	29	26	42	20	22	32	29	22	12	18
Oth.Asia	107	23	127	20	103	25	142	22	81	16	107	22	101	22	126	29	104	24	108	21	119	25
Netherlands	5	7	6	34	5	18	9	20	10	20	5	21	7	27	10	14	7	15	1	7	2	13
Oth.Europe	34	16	35	18	32	14	37	18	26	18	43	14	43	14	86	13	17	20	25	13	33	14
France	8	21	4	28	5	17	15	20	4	12	14	16	2	25	19	13	1	14	9	16	8	8
Italy	5	52	5	22	5	10	6	18	18	19	4	21	1	30	28	13	13	54	4	32	7	25
Oth.Country	14	18	23	12	14	21	26	16	44	16	14	9	9	18	30	12	20	12	9	14	22	7
Total	1,496	18	1,137	16	1,399	15	1,881	16	1,558	15	967	13	1,547	14	2,208	13	1,390	16	1,022	14	1,588	13

Chart 4: Tourist Arrivals by Country of Residence, 2nd Quarter 2013

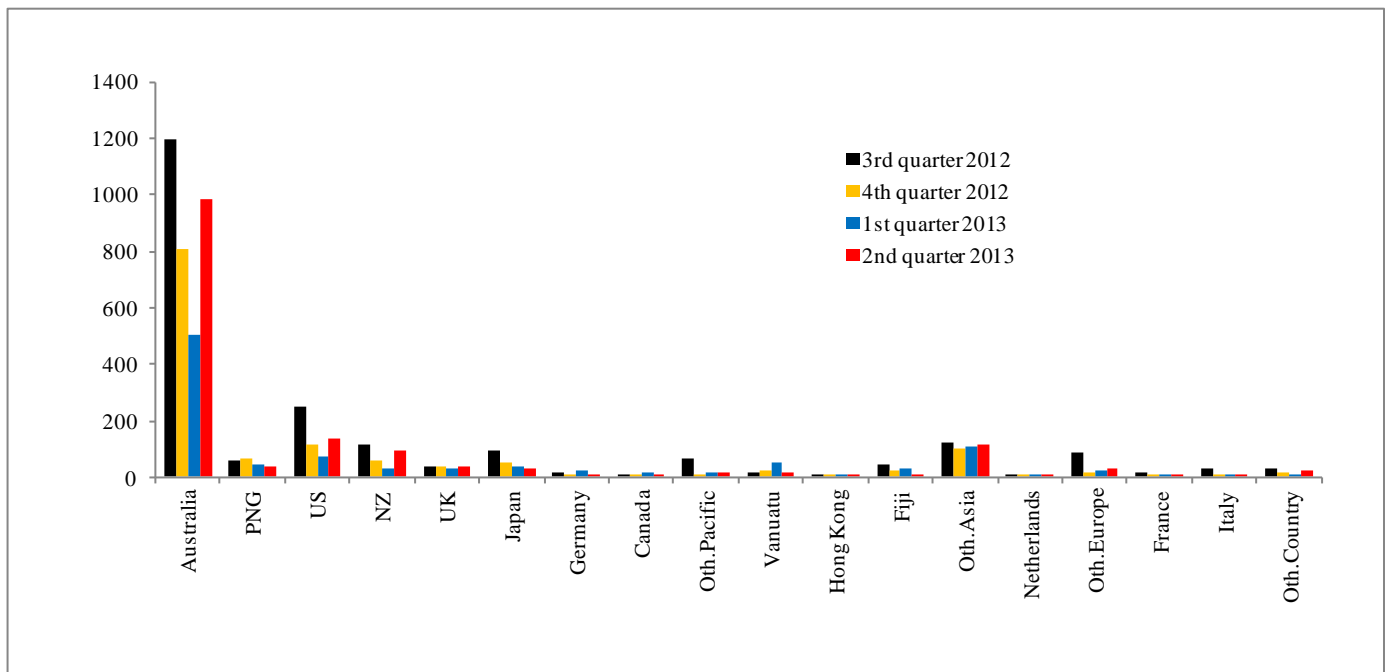


Table 5: Visitor Arrivals by Country of Residence by Purpose of Visit by sex: 2nd Quarter 2013

Country of Usual Residence	Business & Conference			Holiday & Vocation			Transit & Stopover			Visit friends/Relatives			Other			Total		
	M	F	T	M	F	T	M	F	T	M	F	T	M	F	T	M	F	All
Australia	559	141	700	611	365	976	4	1	5	224	150	374	753	241	994	2,151	898	3,049
PNG	115	34	149	14	13	27	6	6	12	19	14	33	186	10	196	340	77	417
US	48	5	53	80	55	135	1	-	1	22	13	35	71	30	101	222	103	325
NZ	159	34	193	59	29	88	7	-	7	46	27	73	128	42	170	399	132	531
UK	14	5	19	17	21	38	-	1	1	6	4	10	23	19	42	60	50	110
Japan	61	6	67	28	5	33	-	-	-	4	2	6	8	2	10	101	15	116
Germany	6	-	6	6	3	9	-	-	-	-	2	2	1	1	2	13	6	19
Canada	8	1	9	7	5	12	-	-	-	3	2	5	4	5	9	22	13	35
Oth.Pacific	65	24	89	10	6	16	-	-	-	6	5	11	17	9	26	98	44	142
Vanuatu	57	11	68	7	5	12	4	1	5	23	14	37	46	17	63	137	48	185
Hong Kong	7	2	9	7	-	7	-	1	1	-	-	-	1	-	1	15	3	18
Fiji	163	68	231	7	4	11	1	-	1	29	6	35	100	46	146	300	124	424
Oth.Asia	183	40	223	80	25	105	14	-	14	81	17	98	191	24	215	549	106	655
Netherlands	3	-	3	1	1	2	-	-	-	-	-	-	-	1	1	4	2	6
Oth.Europe	6	6	12	22	9	31	2	-	2	1	-	1	7	4	11	38	19	57
France	5	-	5	2	5	7	1	-	1	1	-	1	6	1	7	15	6	21
Italy	4	3	7	5	2	7	-	-	-	2	1	3	-	1	1	11	7	18
Oth.Country	11	1	12	17	5	22	-	-	-	4	1	5	24	4	28	56	11	67
Total	1,474	381	1,855	980	558	1,538	40	10	50	471	258	729	1,566	457	2,023	4,531	1,664	6,195
Percentage																		
Australia	18.3	4.6	23.0	20.0	12.0	32.0	0.1	-	0.2	7.3	4.9	12.3	24.7	7.9	32.6	70.5	29.5	100.0
PNG	27.6	8.2	35.7	3.4	3.1	6.5	1.4	1.4	2.9	4.6	3.4	7.9	44.6	2.4	47.0	81.5	18.5	100.0
US	14.8	1.5	16.3	24.6	16.9	41.5	0.3	-	0.3	6.8	4.0	10.8	21.8	9.2	31.1	68.3	31.7	100.0
NZ	29.9	6.4	36.3	11.1	5.5	16.6	1.3	-	1.3	8.7	5.1	13.7	24.1	7.9	32.0	75.1	24.9	100.0
UK	12.7	4.5	17.3	15.5	19.1	34.5	-	0.9	0.9	5.5	3.6	9.1	20.9	17.3	38.2	54.5	45.5	100.0
Japan	52.6	5.2	57.8	24.1	4.3	28.4	-	-	-	3.4	1.7	5.2	6.9	1.7	8.6	87.1	12.9	100.0
Germany	31.6	-	31.6	31.6	15.8	47.4	-	-	-	-	10.5	10.5	5.3	5.3	10.5	68.4	31.6	100.0
Canada	22.9	2.9	25.7	20.0	14.3	34.3	-	-	-	8.6	5.7	14.3	11.4	14.3	25.7	62.9	37.1	100.0
Oth.Pacific	45.8	16.9	62.7	7.0	4.2	11.3	-	-	-	4.2	3.5	7.7	12.0	6.3	18.3	69.0	31.0	100.0
Vanuatu	30.8	5.9	36.8	3.8	2.7	6.5	2.2	0.5	2.7	12.4	7.6	20.0	24.9	9.2	34.1	74.1	25.9	100.0
Hong Kong	38.9	11.1	50.0	38.9	-	38.9	-	5.6	5.6	-	-	-	5.6	-	5.6	83.3	16.7	100.0
Fiji	38.4	16.0	54.5	1.7	0.9	2.6	0.2	-	0.2	6.8	1.4	8.3	23.6	10.8	34.4	70.8	29.2	100.0
Oth.Asia	27.9	6.1	34.0	12.2	3.8	16.0	2.1	-	2.1	12.4	2.6	15.0	29.2	3.7	32.8	83.8	16.2	100.0
Netherlands	50.0	-	50.0	16.7	16.7	33.3	-	-	-	-	-	-	-	16.7	16.7	66.7	33.3	100.0
Oth.Europe	10.5	10.5	21.1	38.6	15.8	54.4	3.5	-	3.5	1.8	-	1.8	12.3	7.0	19.3	66.7	33.3	100.0
France	23.8	-	23.8	9.5	23.8	33.3	4.8	-	4.8	4.8	-	4.8	28.6	4.8	33.3	71.4	28.6	100.0
Italy	22.2	16.7	38.9	27.8	11.1	38.9	-	-	-	11.1	5.6	16.7	-	5.6	5.6	61.1	38.9	100.0
Oth.Country	16.4	1.5	17.9	25.4	7.5	32.8	-	-	-	6.0	1.5	7.5	35.8	6.0	41.8	83.6	16.4	100.0
Total	23.8	6.2	29.9	15.8	9.0	24.8	0.6	0.2	0.8	7.6	4.2	11.8	25.3	7.4	32.7	73.1	26.9	100.0

Chart 5: Visitors Arrival by Country of Residence by Purpose of Visit, 2nd quarter 2013

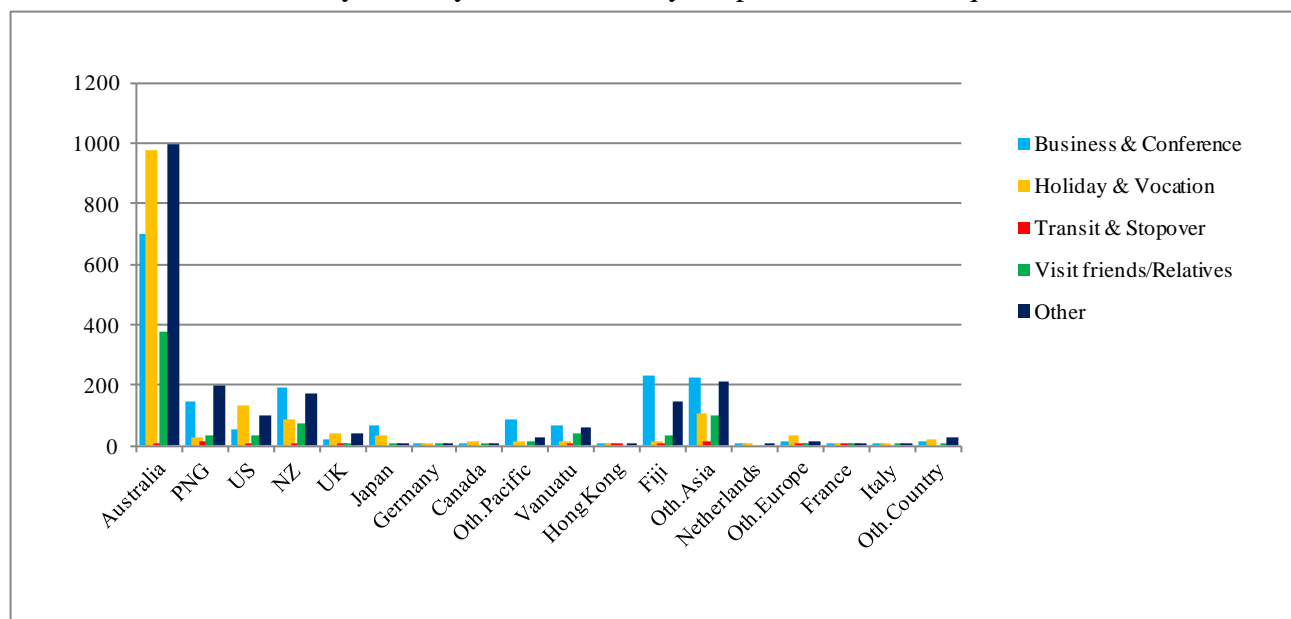


Table 6: Visitor Arrivals by Country of Residence by Age Groups by Sex: 2nd Quarter 2013

Country of Usual Residence	Age-Group																		Total		
	0-14		15-24		25-34		35-44		45-54		55-64		65+		Not Stated		M	F	All		
	M	F	M	F	M	F	M	F	M	F	M	F	M	F	M	F	M	F	All		
Australia	58	48	180	149	323	158	447	151	484	169	398	128	190	54	71	41	2,151	898	3,049		
PNG	4	4	17	6	76	26	94	17	97	10	32	9	4	-	16	5	340	77	417		
US	6	2	22	20	17	13	42	13	49	16	50	21	30	15	6	3	222	103	325		
NZ	7	7	39	17	58	18	74	14	99	29	77	34	31	7	14	6	399	132	531		
UK	-	-	6	15	23	22	4	4	11	4	10	3	5	2	1	-	60	50	110		
Japan	-	-	-	-	16	3	22	7	25	2	19	2	17	-	2	1	101	15	116		
Germany	-	-	-	-	3	1	3	3	4	1	-	1	3	-	-	-	13	6	19		
Canada	-	-	3	-	2	4	5	1	7	2	3	3	2	3	-	-	22	13	35		
Oth.Pacific	1	-	5	2	13	10	36	14	20	11	12	3	6	-	5	4	98	44	142		
Vanuatu	2	3	20	5	21	14	29	12	27	6	25	2	2	1	11	5	137	48	185		
Hong Kong	-	-	-	-	2	-	5	2	3	1	4	-	-	-	1	-	15	3	18		
Fiji	1	3	12	9	57	30	100	40	67	27	45	8	8	1	10	6	300	124	424		
Oth.Asia	3	1	29	14	130	24	133	21	134	27	83	10	17	5	20	4	549	106	655		
Netherlands	-	-	1	-	-	-	1	1	2	-	-	1	-	-	-	-	4	2	6		
Oth.Europe	1	-	2	1	6	7	10	5	10	2	4	3	5	1	-	-	38	19	57		
France	-	-	1	-	2	5	4	-	5	-	3	-	-	-	-	1	15	6	21		
Italy	-	-	-	-	1	2	-	1	5	2	5	1	-	1	-	-	11	7	18		
Oth.Country	1	1	-	2	16	3	16	3	13	-	9	2	1	-	-	-	56	11	67		
Total	84	69	337	240	766	340	1025	309	1062	309	779	231	321	90	157	76	4,531	1,664	6,195		
	Percentage																				
Australia	1.9	1.6	5.9	4.9	10.6	5.2	14.7	5.0	15.9	5.5	13.1	4.2	6.2	1.8	2.3	1.3	70.5	29.5	100.0		
PNG	1.0	1.0	4.1	1.4	18.2	6.2	22.5	4.1	23.3	2.4	7.7	2.2	1.0	-	3.8	1.2	81.5	18.5	100.0		
US	1.8	0.6	6.8	6.2	5.2	4.0	12.9	4.0	15.1	4.9	15.4	6.5	9.2	4.6	1.8	0.9	68.3	31.7	100.0		
NZ	1.3	1.3	7.3	3.2	10.9	3.4	13.9	2.6	18.6	5.5	14.5	6.4	5.8	1.3	2.6	1.1	75.1	24.9	100.0		
UK	-	-	5.5	13.6	20.9	20.0	3.6	3.6	10.0	3.6	9.1	2.7	4.5	1.8	0.9	-	54.5	45.5	100.0		
Japan	-	-	-	-	13.8	2.6	19.0	6.0	21.6	1.7	16.4	1.7	14.7	-	1.7	0.9	87.1	12.9	100.0		
Germany	-	-	-	-	15.8	5.3	15.8	15.8	21.1	5.3	-	5.3	15.8	-	-	-	68.4	31.6	100.0		
Canada	-	-	8.6	-	5.7	11.4	14.3	2.9	20.0	5.7	8.6	8.6	5.7	8.6	-	-	62.9	37.1	100.0		
Oth.Pacific	0.7	-	3.5	1.4	9.2	7.0	25.4	9.9	14.1	7.7	8.5	2.1	4.2	-	3.5	2.8	69.0	31.0	100.0		
Vanuatu	1.1	1.6	10.8	2.7	11.4	7.6	15.7	6.5	14.6	3.2	13.5	1.1	1.1	0.5	5.9	2.7	74.1	25.9	100.0		
Hong Kong	-	-	-	-	11.1	-	27.8	11.1	16.7	5.6	22.2	-	-	-	5.6	-	83.3	16.7	100.0		
Fiji	0.2	0.7	2.8	2.1	13.4	7.1	23.6	9.4	15.8	6.4	10.6	1.9	1.9	0.2	2.4	1.4	70.8	29.2	100.0		
Oth.Asia	0.5	0.2	4.4	2.1	19.8	3.7	20.3	3.2	20.5	4.1	12.7	1.5	2.6	0.8	3.1	0.6	83.8	16.2	100.0		
Netherlands	-	-	16.7	-	-	-	16.7	16.7	33.3	-	-	16.7	-	-	-	-	66.7	33.3	100.0		
Oth.Europe	1.8	-	3.5	1.8	10.5	12.3	17.5	8.8	17.5	3.5	7.0	5.3	8.8	1.8	-	-	66.7	33.3	100.0		
France	-	-	4.8	-	9.5	23.8	19.0	-	23.8	-	14.3	-	-	-	-	4.8	71.4	28.6	100.0		
Italy	-	-	-	-	5.6	11.1	-	5.6	27.8	11.1	27.8	5.6	-	5.6	-	-	61.1	38.9	100.0		
Oth.Country	1.5	1.5	-	3.0	23.9	4.5	23.9	4.5	19.4	-	13.4	3.0	1.5	-	-	-	83.6	16.4	100.0		
Total	1.4	1.1	5.4	3.9	12.4	5.5	16.5	5.0	17.1	5.0	12.6	3.7	5.2	1.5	2.5	1.2	73.1	26.9	100.0		

Chart 6: Visitor Arrivals by Age group category by sex, 2nd quarter 2013

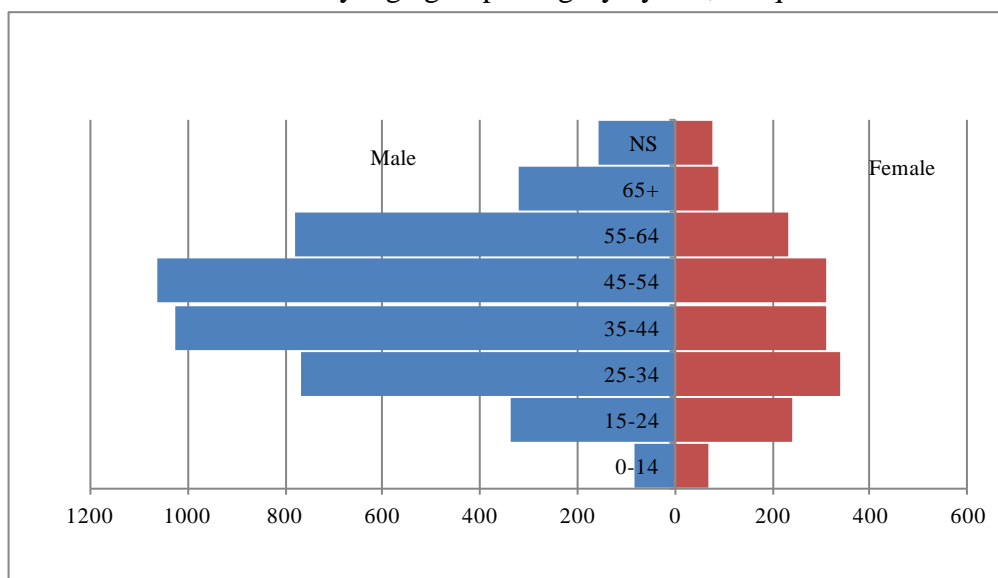


Table 7: Visitor Arrivals by Country of Residence by Occupation and Sex: 2nd Quarter 2013

Country of Usual Residence	Professional and Technical		Administration and Managerial		Clerical & Related Work		Sales Worker		Service Worker		Agriculture Forestry Fishery		Production & Related Work		Other		No Work		Total		
	M	F	M	F	M	F	M	F	M	F	M	F	M	F	M	F	M	F	M	F	All
Australia	824	383	222	62	3	7	10	2	100	34	26	-	128	1	704	323	134	86	2,151	898	3,049
PNG	73	29	35	6	3	1	2	-	5	4	6	-	39	1	172	26	5	10	340	77	417
US	87	48	8	1	1	-	-	-	2	7	2	-	6	-	83	23	33	24	222	103	325
NZ	127	47	52	14	2	-	2	-	30	8	2	1	24	1	145	49	15	12	399	132	531
UK	28	31	5	-	-	-	-	-	4	1	-	-	5	-	16	16	2	2	60	50	110
Japan	33	-	4	-	6	2	1	-	1	1	-	-	-	-	38	10	18	2	101	15	116
Germany	7	3	-	-	-	-	-	-	-	-	-	-	-	-	6	3	-	-	13	6	19
Canada	5	2	1	-	-	1	-	-	1	1	-	-	1	-	11	4	3	5	22	13	35
Oth.Pacific	20	7	1	3	3	-	1	-	3	1	-	-	1	-	62	28	7	5	98	44	142
Vanuatu	61	17	9	3	3	1	1	-	4	7	-	1	6	-	51	16	2	3	137	48	185
Hong Kong	4	1	3	-	-	-	-	-	-	-	-	-	-	-	8	2	-	-	15	3	18
Fiji	87	37	26	5	1	-	2	-	24	-	14	2	8	-	133	75	5	5	300	124	424
Oth.Asia	82	28	58	7	2	2	57	6	2	13	15	-	53	1	232	40	48	9	549	106	655
Netherlands	-	-	-	1	-	-	-	-	-	-	-	-	-	-	4	1	-	-	4	2	6
Oth.Europe	16	7	3	-	-	-	-	-	-	-	-	-	2	-	9	11	8	1	38	19	57
France	2	1	1	-	-	-	-	-	-	1	-	-	2	-	10	3	-	1	15	6	21
Italy	6	2	2	-	-	-	-	-	1	1	-	-	-	-	2	4	-	-	11	7	18
Oth.Country	15	6	10	-	-	-	1	1	-	1	1	-	2	-	25	3	2	-	56	11	67
Total	1477	649	440	102	24	14	77	9	177	80	66	4	277	4	1711	637	282	165	4,531	1,664	6,195
Percentage																					
Australia	27.0	12.6	7.3	2.0	0.1	0.2	0.3	0.1	3.3	1.1	0.9	-	4.2	-	23.1	10.6	4.4	2.8	70.5	29.5	100.0
PNG	17.5	7.0	8.4	1.4	0.7	0.2	0.5	-	1.2	1.0	1.4	-	9.4	0.2	41.2	6.2	1.2	2.4	81.5	18.5	100.0
US	26.8	14.8	2.5	0.3	0.3	-	-	-	0.6	2.2	0.6	-	1.8	-	25.5	7.1	10.2	7.4	68.3	31.7	100.0
NZ	23.9	8.9	9.8	2.6	0.4	-	0.4	-	5.6	1.5	0.4	0.2	4.5	0.2	27.3	9.2	2.8	2.3	75.1	24.9	100.0
UK	25.5	28.2	4.5	-	-	-	-	-	3.6	0.9	-	-	4.5	-	14.5	14.5	1.8	1.8	54.5	45.5	100.0
Japan	28.4	-	3.4	-	5.2	1.7	0.9	-	0.9	0.9	-	-	-	-	32.8	8.6	15.5	1.7	87.1	12.9	100.0
Germany	36.8	15.8	-	-	-	-	-	-	-	-	-	-	-	-	31.6	15.8	-	-	68.4	31.6	100.0
Canada	14.3	5.7	2.9	-	-	2.9	-	-	2.9	2.9	-	-	2.9	-	31.4	11.4	8.6	14.3	62.9	37.1	100.0
Oth.Pacific	14.1	4.9	0.7	2.1	2.1	-	0.7	-	2.1	0.7	-	-	0.7	-	43.7	19.7	4.9	3.5	69.0	31.0	100.0
Vanuatu	33.0	9.2	4.9	1.6	1.6	0.5	0.5	-	2.2	3.8	-	0.5	3.2	-	27.6	8.6	1.1	1.6	74.1	25.9	100.0
Hong Kong	22.2	5.6	16.7	-	-	-	-	-	-	-	-	-	-	-	44.4	11.1	-	-	83.3	16.7	100.0
Fiji	20.5	8.7	6.1	1.2	0.2	-	0.5	-	5.7	-	3.3	0.5	1.9	-	31.4	17.7	1.2	1.2	70.8	29.2	100.0
Oth.Asia	12.5	4.3	8.9	1.1	0.3	0.3	8.7	0.9	0.3	2.0	2.3	-	8.1	0.2	35.4	6.1	7.3	1.4	83.8	16.2	100.0
Netherlands	-	-	-	16.7	-	-	-	-	-	-	-	-	-	-	66.7	16.7	-	-	66.7	33.3	100.0
Oth.Europe	28.1	12.3	5.3	-	-	-	-	-	-	-	-	-	3.5	-	15.8	19.3	14.0	1.8	66.7	33.3	100.0
France	9.5	4.8	4.8	-	-	-	-	-	-	4.8	-	-	9.5	-	47.6	14.3	-	4.8	71.4	28.6	100.0
Italy	33.3	11.1	11.1	-	-	-	-	-	5.6	5.6	-	-	-	-	11.1	22.2	-	-	61.1	38.9	100.0
Oth.Country	22.4	9.0	14.9	-	-	-	1.5	1.5	-	1.5	1.5	-	3.0	-	37.3	4.5	3.0	-	83.6	16.4	100.0
Total	23.8	10.5	7.1	1.6	0.4	0.2	1.2	0.1	2.9	1.3	1.1	0.1	4.5	0.1	27.6	10.3	4.6	2.7	73.1	26.9	100.0

Chart 7: Visitors Arrival by occupation by sex, 2nd quarter 2013

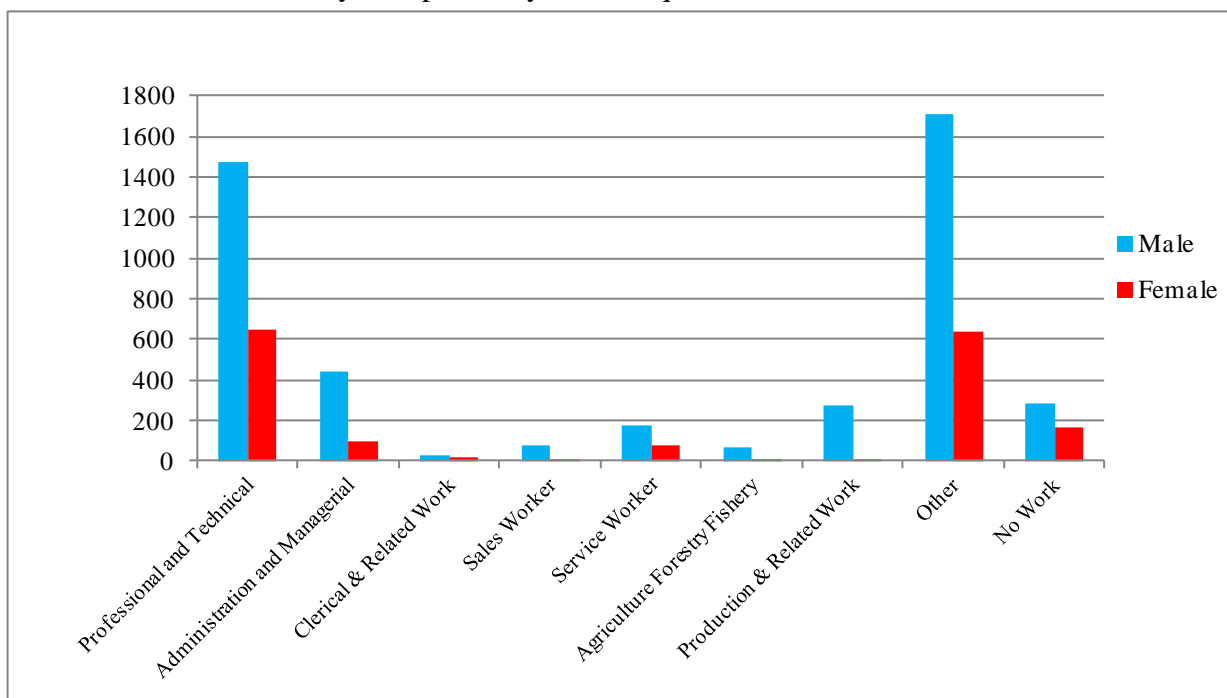
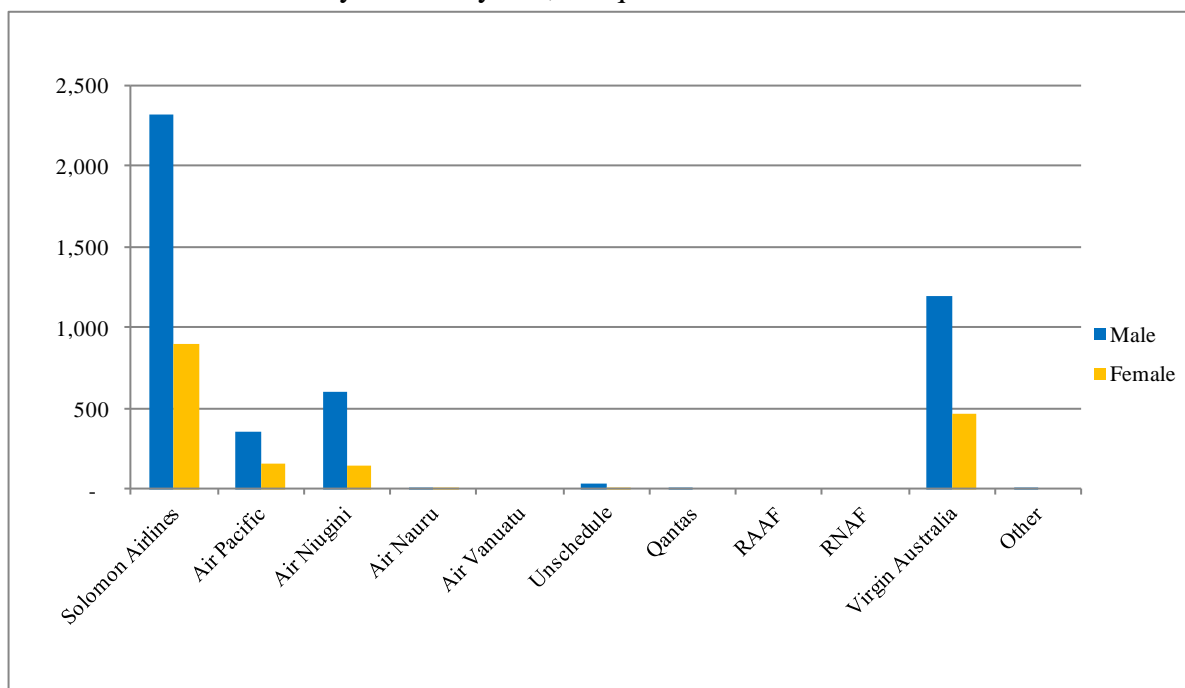


Table 8: Visitor Arrivals by Country of residence by Carrier by Sex: 2nd Quarter 2013

Country of Usual Residence	Solomon Airlines		Air Pacific		Air Niugini		Air Nauru		Air Vanuatu		Unschedule		Qantas		RAAF		RNAS		Virgin Australia		Other		Total			
	M	F	M	F	M	F	M	F	M	F	M	F	M	F	M	F	M	F	M	F	M	F	M	F	All	
	Australia	1290	559	18	5	30	7	-	-	-	-	3	1	-	-	-	-	-	-	810	326	-	-	2,151	898	3,049
PNG	42	10	1	2	286	64	1	-	-	-	-	-	-	-	-	-	-	-	10	1	-	-	340	77	417	
US	70	27	96	61	17	3	1	2	-	-	-	1	-	-	-	-	-	-	38	9	-	-	222	103	325	
NZ	189	67	14	3	11	-	2	-	-	-	28	3	-	-	-	-	-	-	155	59	-	-	399	132	531	
UK	37	28	2	3	2	-	-	-	-	-	-	-	-	-	-	-	-	-	19	19	-	-	60	50	110	
Japan	32	6	15	2	47	7	-	-	-	-	-	-	-	-	-	-	-	-	7	-	-	-	101	15	116	
Germany	10	4	-	-	1	-	-	-	-	-	-	-	-	-	-	-	-	-	2	2	-	-	13	6	19	
Canada	12	8	2	1	4	-	-	-	-	-	-	-	-	-	-	-	-	-	4	4	-	-	22	13	35	
Oth.Pacific	60	23	16	11	5	2	-	-	-	-	-	-	-	-	-	-	-	-	17	8	-	-	98	44	142	
Vanuatu	90	32	34	11	10	2	-	-	-	-	-	-	-	-	-	-	-	-	3	3	-	-	137	48	185	
Hong Kong	9	2	1	-	4	-	-	-	-	-	-	-	-	-	-	-	-	-	1	1	-	-	15	3	18	
Fiji	90	54	119	32	77	31	6	1	-	-	1	1	-	-	-	-	-	-	7	5	-	-	300	124	424	
Oth.Asia	316	53	27	11	94	20	2	1	-	-	2	-	1	-	-	-	-	-	106	21	1	-	549	106	655	
Netherlands	2	2	-	-	1	-	-	-	-	-	-	-	-	-	-	-	-	-	1	-	-	-	4	2	6	
Oth.Europe	17	7	4	6	6	3	-	-	-	-	-	-	-	-	-	-	-	-	11	3	-	-	38	19	57	
France	9	-	2	3	4	-	-	-	-	-	-	-	-	-	-	-	-	-	-	3	-	-	15	6	21	
Italy	8	5	-	-	-	-	-	-	-	-	-	-	-	-	-	-	-	-	3	2	-	-	11	7	18	
Oth.Country	40	8	2	-	7	-	1	-	-	-	-	-	-	-	-	-	-	-	6	3	-	-	56	11	67	
Total	2,323	895	353	151	606	139	13	4	-	-	34	6	1	-	-	-	-	-	1,200	469	1	-	4,531	1,664	6,195	
	Percentage																									
Australia	42.3	18.3	0.6	0.2	1.0	0.2	-	-	-	-	0.1	-	-	-	-	-	-	-	26.6	10.7	-	-	70.5	29.5	100.0	
PNG	10.1	2.4	0.2	0.5	68.6	15.3	0.2	-	-	-	-	-	-	-	-	-	-	-	2.4	0.2	-	-	81.5	18.5	100.0	
US	21.5	8.3	29.5	18.8	5.2	0.9	0.3	0.6	-	-	-	0.3	-	-	-	-	-	-	11.7	2.8	-	-	68.3	31.7	100.0	
NZ	35.6	12.6	2.6	0.6	2.1	-	0.4	-	-	-	5.3	0.6	-	-	-	-	-	-	29.2	11.1	-	-	75.1	24.9	100.0	
UK	33.6	25.5	1.8	2.7	1.8	-	-	-	-	-	-	-	-	-	-	-	-	-	17.3	17.3	-	-	54.5	45.5	100.0	
Japan	27.6	5.2	12.9	1.7	40.5	6.0	-	-	-	-	-	-	-	-	-	-	-	-	6.0	-	-	-	87.1	12.9	100.0	
Germany	52.6	21.1	-	-	5.3	-	-	-	-	-	-	-	-	-	-	-	-	-	10.5	10.5	-	-	68.4	31.6	100.0	
Canada	34.3	22.9	5.7	2.9	11.4	-	-	-	-	-	-	-	-	-	-	-	-	-	11.4	11.4	-	-	62.9	37.1	100.0	
Oth.Pacific	42.3	16.2	11.3	7.7	3.5	1.4	-	-	-	-	-	-	-	-	-	-	-	-	12.0	5.6	-	-	69.0	31.0	100.0	
Vanuatu	48.6	17.3	18.4	5.9	5.4	1.1	-	-	-	-	-	-	-	-	-	-	-	-	1.6	1.6	-	-	74.1	25.9	100.0	
Hong Kong	50.0	11.1	5.6	-	22.2	-	-	-	-	-	-	-	-	-	-	-	-	-	5.6	5.6	-	-	83.3	16.7	100.0	
Fiji	21.2	12.7	28.1	7.5	18.2	7.3	1.4	0.2	-	-	0.2	0.2	-	-	-	-	-	-	1.7	1.2	-	-	70.8	29.2	100.0	
Oth.Asia	48.2	8.1	4.1	1.7	14.4	3.1	0.3	0.2	-	-	0.3	-	0.2	-	-	-	-	-	16.2	3.2	0.2	-	83.8	16.2	100.0	
Netherlands	33.3	33.3	-	-	16.7	-	-	-	-	-	-	-	-	-	-	-	-	-	16.7	-	-	-	66.7	33.3	100.0	
Oth.Europe	29.8	12.3	7.0	10.5	10.5	5.3	-	-	-	-	-	-	-	-	-	-	-	-	19.3	5.3	-	-	66.7	33.3	100.0	
France	42.9	-	9.5	14.3	19.0	-	-	-	-	-	-	-	-	-	-	-	-	-	-	14.3	-	-	-	71.4	28.6	100.0
Italy	44.4	27.8	-	-	-	-	-	-	-	-	-	-	-	-	-	-	-	-	16.7	11.1	-	-	61.1	38.9	100.0	
Oth.Country	59.7	11.9	3.0	-	10.4	-	1.5	-	-	-	-	-	-	-	-	-	-	-	9.0	4.5	-	-	83.6	16.4	100.0	
Total	37.5	14.4	5.7	2.4	9.8	2.2	0.2	0.1	-	-	0.5	0.1	-	-	-	-	-	-	19.4	7.6	-	-	73.1	26.9	100.0	

Chart 8: Visitor Arrivals by Carrier by Sea, 2nd quarter 2013



Appendix 1

Concepts and Definitions

Persons entering Solomon Islands classify themselves into three (3) categories; returning resident, intending resident, and visitor. The concepts and definitions of the various categories are as follows:

(i) *Returning residents*

- Solomon Islanders and non-Solomon Islanders who have left the country and are returning to continue their residence.
- Non Solomon Islanders includes resident permit holders and Diplomatic officials, and their immediate family members. This may also includes legal or official arrangements that fall out side of the above.

(ii) *Intending residents*

- Non-Solomon Islander who wish to take up residence in Solomon Islands.

(iii) *Visitors*

- Any traveller who is not a Solomon Islander and who purposely spend less time – at most a period of 120 days², in the country and with the intention and purpose of visiting.
- *Tourist*
 - Visitors who further classify themselves stating their visit are purposely for '*holiday and vacation*'. This exclude, tourist arrivals by cruise ships.
 - Wife accompanying husband on business purpose is a private tourist unless also working.
 - *World Tourism Organization WTO definition of Tourism:*
*It comprises the activities of persons travelling to and staying in places outside their usual environment for not more than a year for leisure, business and other purposes not related to the exercise of an activity remunerated from within the place visited*³.

(iv) *Markets*

- *Country of Usual Residence*

² Solomon Islands 1993 Statistical Yearbook.

³ Dimensions of Hospitality, Study guide 1. p17

Appendix 2

Table 9: Intending Resident Arrivals by Country of Residence by Occupation and Sex: 2nd Quarter 2013

Country of Usual Residence	Professional and Technical		Administration and Managerial		Clerical & Related Work		Sales Worker		Service Worker		Agriculture Forestry Fishery		Production & Related Work		Other		No Work		Total		
	M	F	M	F	M	F	M	F	M	F	M	F	M	F	M	F	M	F	M	F	All
	Australia	24	22	16	8	1	-	1	1	36	9	1	1	-	1	62	55	17	7	158	104
PNG	10	7	5	1	-	-	-	-	3	4	1	-	1	-	9	4	4	2	33	18	51
US	3	2	-	1	-	-	-	-	6	1	-	-	-	-	-	2	1	-	10	6	16
NZ	3	2	3	1	-	-	-	-	15	5	1	1	-	-	6	12	-	1	28	22	50
UK	2	-	3	2	-	-	-	-	-	-	-	-	-	-	4	2	-	1	9	5	14
Japan	3	-	1	-	-	-	1	-	-	-	-	-	-	-	8	4	-	-	13	4	17
Germany	-	-	-	-	-	-	-	-	-	-	-	-	-	-	-	1	-	-	-	1	1
Canada	-	-	-	-	-	-	-	-	2	-	-	-	-	-	3	-	-	-	5	-	5
Oth.Pacific	6	1	-	1	-	-	-	-	4	1	-	-	-	-	2	3	3	1	15	7	22
Vanuatu	4	2	1	-	-	-	-	-	2	-	-	-	1	-	5	2	3	2	16	6	22
Hong Kong	1	-	-	-	-	-	-	-	-	-	-	-	-	-	-	-	-	-	1	-	1
Fiji	6	8	5	3	-	-	-	-	2	1	2	-	2	1	14	8	-	2	31	23	54
Oth.Asia	29	15	67	13	4	3	25	2	2	8	14	1	95	2	145	21	54	10	435	75	510
Netherlands	-	-	-	-	-	-	-	-	-	-	-	-	-	-	-	-	-	-	-	-	-
Oth.Europe	-	1	-	-	-	-	-	-	-	1	-	-	-	-	3	-	-	2	3	4	7
France	-	-	-	-	-	-	-	-	-	-	-	-	-	-	1	-	-	-	1	-	1
Italy	-	-	-	-	-	-	-	-	-	-	-	-	-	-	-	-	-	-	-	-	-
Oth.Country	4	2	-	1	-	-	-	-	-	-	-	-	-	-	2	1	-	-	6	4	10
Total	95	62	101	31	5	3	27	3	72	30	19	3	99	4	264	115	82	28	764	279	1,043
	Percentage																				
Australia	9.2	8.4	6.1	3.1	0.4	-	0.4	0.4	13.7	3.4	0.4	0.4	-	0.4	23.7	21.0	6.5	2.7	60.3	39.7	100.0
PNG	19.6	13.7	9.8	2.0	-	-	-	-	5.9	7.8	2.0	-	2.0	-	17.6	7.8	7.8	3.9	64.7	35.3	100.0
US	18.8	12.5	-	6.3	-	-	-	-	37.5	6.3	-	-	-	-	-	12.5	6.3	-	62.5	37.5	100.0
NZ	6.0	4.0	6.0	2.0	-	-	-	-	30.0	10.0	2.0	2.0	-	-	12.0	24.0	-	2.0	56.0	44.0	100.0
UK	14.3	-	21.4	14.3	-	-	-	-	-	-	-	-	-	-	28.6	14.3	-	7.1	64.3	35.7	100.0
Japan	17.6	-	5.9	-	-	-	5.9	-	-	-	-	-	-	-	47.1	23.5	-	-	76.5	23.5	100.0
Germany	-	-	-	-	-	-	-	-	-	-	-	-	-	-	-	100.0	-	-	-	100.0	100.0
Canada	-	-	-	-	-	-	-	-	40.0	-	-	-	-	-	60.0	-	-	-	100.0	-	100.0
Oth.Pacific	27.3	4.5	-	4.5	-	-	-	-	18.2	4.5	-	-	-	-	9.1	13.6	13.6	4.5	68.2	31.8	100.0
Vanuatu	18.2	9.1	4.5	-	-	-	-	-	9.1	-	-	-	4.5	-	22.7	9.1	13.6	9.1	72.7	27.3	100.0
Hong Kong	100.0	-	-	-	-	-	-	-	-	-	-	-	-	-	-	-	-	-	100.0	-	100.0
Fiji	11.1	14.8	9.3	5.6	-	-	-	-	3.7	1.9	3.7	-	3.7	1.9	25.9	14.8	-	3.7	57.4	42.6	100.0
Oth.Asia	5.7	2.9	13.1	2.5	0.8	0.6	4.9	0.4	0.4	1.6	2.7	0.2	18.6	0.4	28.4	4.1	10.6	2.0	85.3	14.7	100.0
Netherlands	-	-	-	-	-	-	-	-	-	-	-	-	-	-	-	-	-	-	-	-	-
Oth.Europe	-	14.3	-	-	-	-	-	-	-	14.3	-	-	-	-	42.9	-	-	28.6	42.9	57.1	100.0
France	-	-	-	-	-	-	-	-	-	-	-	-	-	-	100.0	-	-	-	100.0	-	100.0
Italy	-	-	-	-	-	-	-	-	-	-	-	-	-	-	-	-	-	-	-	-	-
Oth.Country	40.0	20.0	-	-	-	-	-	-	-	-	-	-	-	-	20.0	10.0	-	-	60.0	40.0	100.0
Total	9.1	5.9	9.7	3.0	0.5	0.3	2.6	0.3	6.9	2.9	1.8	0.3	9.5	0.4	25.3	11.0	7.9	2.7	73.3	26.7	100.0

Table 10: Intending Resident Arrivals by Country of Residence by Age Groups by Sex: 2nd Quarter 2013

Country of Usual Residence	Age-Group																		Total		
	0-14		15-24		25-34		35-44		45-54		55-64		65+		Not Stated		M	F	All		
	M	F	M	F	M	F	M	F	M	F	M	F	M	F	M	F					
Australia	12	4	3	2	25	27	44	33	38	18	20	11	4	2	12	7	158	104	262		
PNG	2	4	3	1	2	3	12	8	7	-	-	-	-	-	7	2	33	18	51		
US	-	-	2	1	2	1	2	-	1	3	1	1	-	-	2	-	10	6	16		
NZ	-	-	3	3	4	6	2	2	11	3	8	6	-	-	-	2	28	22	50		
UK	-	1	-	-	2	-	1	2	4	2	2	-	-	-	-	-	9	5	14		
Japan	-	-	-	-	5	1	1	-	1	1	4	1	2	-	1	13	4	17			
Germany	-	-	-	-	-	-	-	-	-	1	-	-	-	-	-	-	-	1	1		
Canada	-	-	-	-	1	-	1	-	3	-	-	-	-	-	-	-	5	-	5		
Oth.Pacific	3	-	2	1	1	-	5	2	2	3	1	-	-	-	1	1	15	7	22		
Vanuatu	1	2	2	-	3	-	6	1	2	-	1	1	-	-	1	2	16	6	22		
Hong Kong	-	-	-	-	1	-	-	-	-	-	-	-	-	-	-	-	1	-	1		
Fiji	-	2	4	3	6	8	6	5	7	-	7	3	-	-	1	2	31	23	54		
Oth.Asia	4	2	27	9	99	31	124	16	112	10	44	2	3	-	22	5	435	75	510		
Netherlands	-	-	-	-	-	-	-	-	-	-	-	-	-	-	-	-	-	-	-		
Oth.Europe	-	1	-	-	1	-	-	2	1	-	1	-	-	-	-	1	3	4	7		
France	-	-	-	-	1	-	-	-	-	-	-	-	-	-	-	-	1	-	1		
Italy	-	-	-	-	-	-	-	-	-	-	-	-	-	-	-	-	-	-	-		
Oth.Country	-	-	-	-	1	2	2	1	-	1	3	-	-	-	-	-	6	4	10		
Total	22	16	46	20	154	79	206	72	189	42	92	25	9	2	46	23	764	279	1,043		
	Percentage																				
Australia	4.6	1.5	1.1	0.8	9.5	10.3	16.8	12.6	14.5	6.9	7.6	4.2	1.5	0.8	4.6	2.7	60.3	39.7	100.0		
PNG	3.9	7.8	5.9	2.0	3.9	5.9	23.5	15.7	13.7	-	-	-	-	-	13.7	3.9	64.7	35.3	100.0		
US	-	-	12.5	6.3	12.5	6.3	12.5	-	6.3	18.8	6.3	6.3	-	-	12.5	-	62.5	37.5	100.0		
NZ	-	-	6.0	6.0	8.0	12.0	4.0	4.0	22.0	6.0	16.0	12.0	-	-	-	4.0	56.0	44.0	100.0		
UK	-	7.1	-	-	14.3	-	7.1	14.3	28.6	14.3	14.3	-	-	-	-	-	64.3	35.7	100.0		
Japan	-	-	-	-	29.4	5.9	5.9	-	5.9	5.9	23.5	5.9	11.8	-	-	5.9	76.5	23.5	100.0		
Germany	-	-	-	-	-	-	-	-	-	100.0	-	-	-	-	-	-	-	100.0	100.0		
Canada	-	-	-	-	20.0	-	20.0	-	60.0	-	-	-	-	-	-	-	100.0	-	100.0		
Oth.Pacific	13.6	-	9.1	4.5	4.5	-	22.7	9.1	9.1	13.6	4.5	-	-	-	4.5	4.5	68.2	31.8	100.0		
Vanuatu	4.5	9.1	9.1	-	13.6	-	27.3	4.5	9.1	-	4.5	4.5	-	-	4.5	9.1	72.7	27.3	100.0		
Hong Kong	-	-	-	-	100.0	-	-	-	-	-	-	-	-	-	-	-	100.0	-	100.0		
Fiji	-	3.7	7.4	5.6	11.1	14.8	11.1	9.3	13.0	-	13.0	5.6	-	-	1.9	3.7	57.4	42.6	100.0		
Oth.Asia	0.8	0.4	5.3	1.8	19.4	6.1	24.3	3.1	22.0	2.0	8.6	0.4	0.6	-	4.3	1.0	85.3	14.7	100.0		
Netherlands	-	-	-	-	-	-	-	-	-	-	-	-	-	-	-	-	-	-	-		
Oth.Europe	-	14.3	-	-	14.3	-	-	28.6	14.3	-	14.3	-	-	-	-	14.3	42.9	57.1	100.0		
France	-	-	-	-	100.0	-	-	-	-	-	-	-	-	-	-	-	100.0	-	100.0		
Italy	-	-	-	-	-	-	-	-	-	-	-	-	-	-	-	-	-	-	-		
Oth.Country	-	-	-	-	10.0	20.0	20.0	10.0	-	10.0	30.0	-	-	-	-	-	60.0	40.0	100.0		
Total	2.1	1.5	4.4	1.9	14.8	7.6	19.8	6.9	18.1	4.0	8.8	2.4	0.9	0.2	4.4	2.2	73.3	26.7	100.0		

Table 11: Returning Resident Arrivals by Country of Residence by Age Groups by Sex: 2nd Quarter 2013

Country of Usual Residence	Age-Group																		Total		
	0-14		15-24		25-34		35-44		45-54		55-64		65+		Not Stated		M	F	All		
	M	F	M	F	M	F	M	F	M	F	M	F	M	F	M	F	M	F	All		
Australia	-	-	-	-	-	-	-	-	1	-	-	-	-	-	-	-	1	-	1		
PNG	-	-	-	-	-	-	-	-	-	-	-	-	-	-	-	-	-	-	-		
US	-	-	-	-	-	-	-	-	-	-	-	-	-	-	-	-	-	-	-		
NZ	-	-	-	-	-	-	-	-	-	-	-	-	-	-	-	-	-	-	-		
UK	-	-	-	-	-	-	-	-	-	-	-	-	-	-	-	-	-	-	-		
Japan	-	-	-	-	-	1	-	1	-	-	-	-	-	-	-	-	-	2	2		
Germany	-	-	-	-	-	-	-	-	-	-	-	-	-	-	-	-	-	-	-		
Canada	-	-	-	-	-	-	-	-	-	-	-	-	-	-	-	-	-	-	-		
Oth.Pacific	-	-	-	-	-	-	-	-	-	-	-	-	-	-	-	-	-	-	-		
Vanuatu	-	-	-	-	-	-	-	-	-	-	-	-	-	-	-	-	-	-	-		
Hong Kong	-	-	-	-	-	-	-	-	-	-	-	-	-	-	-	-	-	-	-		
Fiji	-	-	-	-	-	-	-	-	-	-	-	-	-	-	-	-	-	-	-		
Oth.Asia	-	-	-	-	-	-	-	-	-	-	-	-	-	-	-	-	-	-	-		
Netherlands	-	-	-	-	-	-	-	-	-	-	-	-	-	-	-	-	-	-	-		
Oth.Europe	-	-	-	-	-	-	-	-	-	-	-	-	-	-	-	-	-	-	-		
France	-	-	-	-	-	-	-	-	-	-	-	-	-	-	-	-	-	-	-		
Italy	-	-	-	-	-	-	-	-	-	-	-	-	-	-	-	-	-	-	-		
Oth.Country	-	-	-	-	-	-	-	-	-	-	-	-	-	-	-	-	-	-	-		
Solomon Is.	89	78	202	168	562	364	652	344	457	203	251	81	66	20	143	86	2,422	1,344	3,766		
Total	89	78	202	168	562	365	652	345	458	203	251	81	66	20	143	86	2,423	1,346	3,769		

Country of Usual Residence	Percentage																		Total		
	M	F	M	F	M	F	M	F	M	F	M	F	M	F	M	F	M	F	All		
Australia	-	-	-	-	-	-	-	-	100.0	-	-	-	-	-	-	-	100.0	-	100.0		
PNG	-	-	-	-	-	-	-	-	-	-	-	-	-	-	-	-	-	-	-		
US	-	-	-	-	-	-	-	-	-	-	-	-	-	-	-	-	-	-	-		
NZ	-	-	-	-	-	-	-	-	-	-	-	-	-	-	-	-	-	-	-		
UK	-	-	-	-	-	-	-	-	-	-	-	-	-	-	-	-	-	-	-		
Japan	-	-	-	-	-	0.50	-	0.50	-	-	-	-	-	-	-	-	-	100.0	100.0		
Germany	-	-	-	-	-	-	-	-	-	-	-	-	-	-	-	-	-	-	-		
Canada	-	-	-	-	-	-	-	-	-	-	-	-	-	-	-	-	-	-	-		
Oth.Pacific	-	-	-	-	-	-	-	-	-	-	-	-	-	-	-	-	-	-	-		
Vanuatu	-	-	-	-	-	-	-	-	-	-	-	-	-	-	-	-	-	-	-		
Hong Kong	-	-	-	-	-	-	-	-	-	-	-	-	-	-	-	-	-	-	-		
Fiji	-	-	-	-	-	-	-	-	-	-	-	-	-	-	-	-	-	-	-		
Oth.Asia	-	-	-	-	-	-	-	-	-	-	-	-	-	-	-	-	-	-	-		
Netherlands	-	-	-	-	-	-	-	-	-	-	-	-	-	-	-	-	-	-	-		
Oth.Europe	-	-	-	-	-	-	-	-	-	-	-	-	-	-	-	-	-	-	-		
France	-	-	-	-	-	-	-	-	-	-	-	-	-	-	-	-	-	-	-		
Italy	-	-	-	-	-	-	-	-	-	-	-	-	-	-	-	-	-	-	-		
Oth.Country	-	-	-	-	-	-	-	-	-	-	-	-	-	-	-	-	-	-	-		
Solomon Is.	2.4	2.1	5.4	4.5	14.9	9.7	17.3	9.1	12.1	5.4	6.7	2.2	1.8	0.5	3.8	2.3	64.3	35.7	100.0		
Total	2.4	2.1	5.4	4.5	14.9	9.7	17.3	9.2	12.2	5.4	6.7	2.1	1.8	0.5	3.8	2.3	64.3	35.7	100.0		

Table 12: Returning Resident Arrivals by Country of Residence by Occupation and Sex: 2nd Quarter 2013

Country of Usual Residence	Professional and Technical		Administration and Managerial		Clerical & Related Work		Sales Worker		Service Worker		Agriculture Forestry Fishery		Production & Related Work		Other		No Work		Total		
	M	F	M	F	M	F	M	F	M	F	M	F	M	F	M	F	M	F	M	F	All
	Australia	-	-	-	-	-	-	-	-	1	-	-	-	-	-	-	-	-	-	1	-
PNG	-	-	-	-	-	-	-	-	-	-	-	-	-	-	-	-	-	-	-	-	-
US	-	-	-	-	-	-	-	-	-	-	-	-	-	-	-	-	-	-	-	-	-
NZ	-	-	-	-	-	-	-	-	-	-	-	-	-	-	-	-	-	-	-	-	-
UK	-	-	-	-	-	-	-	-	-	-	-	-	-	-	-	-	-	-	-	-	-
Japan	-	1	-	-	-	-	-	-	-	-	-	-	-	-	-	1	-	-	-	2	2
Germany	-	-	-	-	-	-	-	-	-	-	-	-	-	-	-	-	-	-	-	-	-
Canada	-	-	-	-	-	-	-	-	-	-	-	-	-	-	-	-	-	-	-	-	-
Oth.Pacific	-	-	-	-	-	-	-	-	-	-	-	-	-	-	-	-	-	-	-	-	-
Vanuatu	-	-	-	-	-	-	-	-	-	-	-	-	-	-	-	-	-	-	-	-	-
Hong Kong	-	-	-	-	-	-	-	-	-	-	-	-	-	-	-	-	-	-	-	-	-
Fiji	-	-	-	-	-	-	-	-	-	-	-	-	-	-	-	-	-	-	-	-	-
Oth.Asia	-	-	-	-	-	-	-	-	-	-	-	-	-	-	-	-	-	-	-	-	-
Netherlands	-	-	-	-	-	-	-	-	-	-	-	-	-	-	-	-	-	-	-	-	-
Oth.Europe	-	-	-	-	-	-	-	-	-	-	-	-	-	-	-	-	-	-	-	-	-
France	-	-	-	-	-	-	-	-	-	-	-	-	-	-	-	-	-	-	-	-	-
Italy	-	-	-	-	-	-	-	-	-	-	-	-	-	-	-	-	-	-	-	-	-
Oth.Country	-	-	-	-	-	-	-	-	-	-	-	-	-	-	-	-	-	-	-	-	-
Solomon Is.	797	415	272	96	13	29	44	7	51	174	34	11	66	7	993	479	152	126	2,422	1,344	3,766
Total	797	416	272	96	13	29	44	7	52	174	34	11	66	7	993	480	152	126	2,423	1,346	3,769
<u>Percentage</u>																					
Australia	-	-	-	-	-	-	-	-	100.0	-	-	-	-	-	-	-	-	-	100.0	-	100.0
PNG	-	-	-	-	-	-	-	-	-	-	-	-	-	-	-	-	-	-	-	-	-
US	-	-	-	-	-	-	-	-	-	-	-	-	-	-	-	-	-	-	-	-	-
NZ	-	-	-	-	-	-	-	-	-	-	-	-	-	-	-	-	-	-	-	-	-
UK	-	-	-	-	-	-	-	-	-	-	-	-	-	-	-	-	-	-	-	-	-
Japan	-	50.0	-	-	-	-	-	-	-	-	-	-	-	-	-	50.0	-	-	-	100.0	100.0
Germany	-	-	-	-	-	-	-	-	-	-	-	-	-	-	-	-	-	-	-	-	-
Canada	-	-	-	-	-	-	-	-	-	-	-	-	-	-	-	-	-	-	-	-	-
Oth.Pacific	-	-	-	-	-	-	-	-	-	-	-	-	-	-	-	-	-	-	-	-	-
Vanuatu	-	-	-	-	-	-	-	-	-	-	-	-	-	-	-	-	-	-	-	-	-
Hong Kong	-	-	-	-	-	-	-	-	-	-	-	-	-	-	-	-	-	-	-	-	-
Fiji	-	-	-	-	-	-	-	-	-	-	-	-	-	-	-	-	-	-	-	-	-
Oth.Asia	-	-	-	-	-	-	-	-	-	-	-	-	-	-	-	-	-	-	-	-	-
Netherlands	-	-	-	-	-	-	-	-	-	-	-	-	-	-	-	-	-	-	-	-	-
Oth.Europe	-	-	-	-	-	-	-	-	-	-	-	-	-	-	-	-	-	-	-	-	-
France	-	-	-	-	-	-	-	-	-	-	-	-	-	-	-	-	-	-	-	-	-
Italy	-	-	-	-	-	-	-	-	-	-	-	-	-	-	-	-	-	-	-	-	-
Oth.Country	-	-	-	-	-	-	-	-	-	-	-	-	-	-	-	-	-	-	-	-	-
Solomon Is.	21.2	11.0	7.2	2.5	0.3	0.8	1.2	0.2	1.4	4.6	0.9	0.3	1.8	0.2	26.4	12.7	4.0	3.3	64.3	35.7	100.0
Total	21.1	11.0	7.2	2.5	0.3	0.8	1.2	0.2	1.4	4.6	0.9	0.3	1.8	0.2	26.3	12.7	4.0	3.3	64.3	35.7	100.0