



Solomon Islands Government

Statistical Bulletin: No: 8/2014

VISITOR STATISTICS

(First Quarter 2014)

Solomon Islands National Statistics Office

Ministry of Finance and Treasury

Honiara

TABLE OF CONTENTS

Introduction	3
COMMENTARY OF RESULTS	5
<i>International Arrivals</i>	5
<i>Arrivals by Country of Residence</i>	5
<i>Visitor by Month</i>	5
<i>Tourists</i>	5
<i>Visitors by Purpose of Visit</i>	5
<i>Visitor by Age Group</i>	5
<i>Visitor by Occupation:</i>	5
<i>Visitor by Carrier</i>	5

Charts

Chart 1: Arrivals by Category, 1 st Quarter 2014	6
Chart 2: Visitor Arrivals by Country of Residence by quarter: 1 st Quarter 2014.....	7
Chart 3: Visitor Arrivals by Month, 2011 to 1 st Quarter 2014.....	8
Chart 4: Tourist Arrivals by Country of Residence, 1 st Quarter 2014.....	9
Chart 5: Visitor Arrivals by Country of Residence by Purpose of Visit, 1 st Quarter 2014.....	10
Chart 6: Visitor Arrivals by Age group category by sex, 1st Quarter 2014.....	11
Chart 7: Visitor Arrivals by Occupation by sex, 1 st Quarter 2014.....	12
Chart 8: Visitor Arrivals by Carrier by sex, 1 st Quarter 2014.....	13

Tables

Table 1: Total Arrivals Classified by Purpose of Travel by Sex by Year by Quarter: 1 st Quarter 2014	6
Table 2: Visitors Arrivals by Country of Residence by Year by Quarter: 1 st Quarter 2014.....	7
Table 3: Visitors Arrivals by Month: 2006 to 1 st Quarter 2014.....	8
Table 4: Visitors Classified as Tourists by Country of Residence by Year, Quarter and Average Length of Stay: 2011 to 1 st Quarter 2014	9
Table 5: Visitor Arrivals by Country of Residence by Purpose of Visit by sex: 1 st Quarter 2014.....	10
Table 6: Visitors Arrivals by Country of Residence by Age Groups by sex: 1 st Quarter 2014.....	11
Table 7: Visitors Arrivals by Country of Residence by Occupation and Sex: 1 st Quarter 2014	12
Table 8: Visitors Arrivals by Country of Residence by Carrier By Sex: 1 st Quarter 2014.....	13

Appendix 1	14
<i>Concepts and Definitions</i>	14
Appendix 2.....	15

Table 9: Intending Resident Arrivals by Country of residence by Occupation and sex: 1 st Quarter 2014.....	15
Table 10: Intending Resident Arrivals by country of Residence by Age Groups by Sex: 1 st Quarter 2014.....	16
Table 11: Returning Resident Arrivals by country of Residence by Age Groups and sex: 1 st Quarter 2014.....	17
Table 12: Returning Resident Arrivals by country of Residence by Occupation and sex: 1 st Quarter 2014.....	18

Introduction

This quarterly bulletin is produced by the National Statistics Office NSO in the Ministry of Finance and Treasury. It provides information on international arrivals comprised of the returning resident, intending resident, and visitor. The explanation of these categories is provided in Appendix 1 of the bulletin.

Visitor category comprised the bigger share of the bulletin, (portrayed in tables 1 to 8); compared to the returning and intending resident category portrayed in Tables 1, and 9 to 12. The bulletin includes twelve tables and eight charts stretched over cross-field tabulation, preferably to meet information need of local, regional, and international researchers.

The information captured through a self fill Disembarkation form that was completed by all disembarking passengers. The forms were collected by Immigration officials at international check-in counters on arrival. The coverage of the bulletin is complete.

Sheer acknowledgement is owed to the Immigration Department for their continuous support of this bulletin, by providing an office space and permitting the statistics office to input completed forms. With the official arrangement in-placed between the Statistics and Immigration departments this bulletin is possible.

The inclusion of four new tables 9 to 12 in Appendix 2 of the bulletin anticipates to complete the distribution portrait of Intending and Returning resident. The distribution is by age groups, occupation and by country of usual residence.

Data limitations, highlighted in the previous bulletin still remain, though some have substantially improved but noted again for ease of reference as follows:-

- Data entry duplication by the Immigration and Statistics departments was a long standing issue. Discussion of the issues had been made by the two departments, though resolution has been recognized, this was yet to be put in place.
- Timeliness of visitor statistics has improved but the bulletin may be delayed by the production process.
- The information contained in the bulletin is based on information captured from the data source by the SINSO.
- The monetary value of the industry is not available and thus not possible in this bulletin. The concepts and definitions of the arrival categories were included in Appendix 1. The symbols that are likely to be used are:

-	zero if representing a value
-	negative change if representing a percentage change
+	positive change if representing a percentage change
p	preliminary figure, subject to revision
r	revised
e	estimate
n/a	not available

For more information contact the Statistics Office, Department of Finance and Treasury:

TELEPHONE : (677) 22154/21427

FACSMILE : (677) 23775

E-MAIL : STATS-management@mof.gov.sb

: STATS-SocialDemography@mof.gov.sb

WEBSITE : **<http://www.spc.int/prism/country/sb/stats>**

Contact persons: 1. Mrs. Irene KALAUMA, Chief Statistician

2. Mrs. Anterlyn TUZAKANA, Senior Statistician

COMMENTARY OF RESULTS

International Arrivals

Total Arrivals for the first quarter of 2014 was 9,306. This figure showed a decrease of 25.7% compared to the previous quarter (4th Quarter 2013). Compared to the same quarter a year ago, it showed a decrease of 4.1%.

Arrivals classified by the category for the first quarter of 2014 showed that returning resident comprise of 37%. Visitors recorded 51% and the remaining 12% was recorded for intending resident.

Visitor arrivals for the first quarter showed a decrease of 21.2% to 4,754 compared to the fourth quarter 2013 figure of 6,031. Compared to the same quarter in 2013 it also showed a decrease of 10.6%. Table 1, showed visitor and returning resident categories comprised the larger proportion of all arrivals while the intending resident represents the lesser share during the quarter. Chart 1 gives a clear picture of all the categories.

Visitor by Country of Residence

Arrivals by country of residence for first quarter continue to show that Australians (43.9%) remains the frequent travellers to Solomon Islands as in the previous quarters, followed by Other Asia (14.5%), PNG (8.1%), Fiji (7.4%), NZ (5.8 %), and US (4.9%).

Visitor by Month

Visitors by monthly arrivals for the quarter showed that March has the highest number of arrivals with 1,816 persons. This was followed by the month of February with a recorded total of 1,523 persons and January the least with 1,415 persons.

Tourists

Tourist¹ arrivals for first quarter of the year recorded a total of 988 persons and they spent an average of 14 days in the country. The highest number of tourists recorded for the quarter comes from Australia (49%) and staying in the country for an average of 13 days. This was followed by Other Asia (15.2%), USA (8.3%), Other Europe (6.7%), PNG (4.3 %), and Japan (3.7%).

Visitor by Purpose of Visit

Distribution of visitors by purpose of visit revealed that Business & Conference (40.5%) as most popular during the quarter. This was followed by 'Other' (26.1%), Holiday & Vocation (19%), Visit friends & relatives (12.6%) and Transit & stopover the least with 1.8%.

Visitor by Age Group

Visitor Arrivals by broad age groups showed that 82.6% of arrivals were in the 25years to 64years age range. The younger and the older age brackets represent 14.4% while the remaining 3.1% represents visitors who did not state their age. Male represent 77.5% of the arrival and female 22.5%. (Refer to Chart 6)

Visitor by Occupation

Visitor by occupational category revealed that those who stated 'Other' (39.6%) as their occupation recorded the highest during the quarter. This was followed by Professional & Technical (27.3%), Administration and managerial (11.7%), No work (6.9%), Production & Related Work (5.3%) and Service Worker (4.5%). Table 7 further revealed that Australia not only dominated the Arrivals in terms of markets but also dominated most of the categories of occupations during the quarter. Refer to Table 7 for further analysis.

Visitor by Carrier

The most popular carriers during the quarter were Solomon Airlines (49%) followed by Virgin Australia (25.4%), Air Niu Gini (17.9%) and Air Pacific (6.8%).

¹ Refer to Appendix 1 for the definition

Table 1: Total Arrivals Classified by Purpose of Travel by Sex, by Year by Quarter: 1st Quarter 2014

Year / Quarter	Returning Resident						Intending Resident				Visitor			Total		
	Solomon Islander			Non-Solomon Islander			All	M	F	T	M	F	T	M	F	All
	M	F	T	M	F	T										
2009 1 st	1,173	760	1,933	677	436	1,113	3,046	659	315	974	3,015	1,258	4,273	5,524	2,769	8,293
2 nd	1,427	728	2,155	471	238	709	2,864	611	244	855	3,242	1,374	4,616	5,751	2,584	8,335
3 rd	1,182	709	1,891	425	220	645	2,536	786	355	1,141	3,263	1,519	4,782	5,656	2,803	8,459
4 th	2,145	1,152	3,297	393	197	590	3,887	722	282	1,004	3,177	1,412	4,589	6,437	3,043	9,480
2010 1 st	1,045	695	1,740	550	342	892	2,632	808	380	1,188	3,115	1,095	4,210	5,518	2,512	8,030
2 nd	1,337	707	2,044	494	272	766	2,810	808	307	1,115	3,370	1,384	4,754	6,009	2,670	8,679
3 rd	1,421	730	2,151	485	274	759	2,910	835	316	1,151	4,494	1,768	6,262	7,235	3,088	10,323
4 th	2,783	1,550	4,333	13	4	17	4,350	848	284	1,132	3,766	1,529	5,295	7,410	3,367	10,777
2011 1 st	1,187	724	1,911	694	332	1,026	2,937	1058	362	1,420	3,972	1,147	5,119	6,911	2,565	9,476
2 nd	1,601	880	2,481	615	292	907	3,388	716	258	974	4,071	1,434	5,505	7,003	2,864	9,867
3 rd	1,716	739	2,455	642	282	924	3,379	930	275	1,205	4,523	1,721	6,244	7,811	3,017	10,828
4 th	3,297	1,765	5,062	4	2	6	5,068	805	268	1,073	4,341	1,732	6,073	8,447	3,767	12,214
2012 1 st	1,915	994	2,909	15	3	18	2,927	1,029	387	1,416	3,554	1,097	4,651	6,513	2,481	8,994
2 nd	1,782	967	2,749	667	312	979	3,728	695	278	973	4,921	2,008	6,929	8,065	3,565	11,630
3 rd	2,169	1,218	3,387	22	12	34	3,421	840	255	1,095	5,123	2,184	7,307	8,154	3,669	11,823
4 th	3,192	1,784	4,976	5	1	6	4,982	631	215	846	3,572	1,466	5,038	7,400	3,466	10,866
2013 1 st	1,966	1,111	3,077	6	-	6	3,083	961	338	1,299	4,034	1,284	5,318	6,967	2,733	9,700
2 nd	2,422	1,344	3,766	1	2	3	3,769	764	279	1,043	4,531	1,664	6,195	7,718	3,289	11,007
3 rd	2,442	1,415	3,857	5	3	8	3,865	715	228	943	5,007	1,880	6,887	8,169	3,526	11,695
4 th	3,577	2,051	5,628	12	12	24	5,652	620	224	844	4,294	1,737	6,031	8,503	4,024	12,527
2014 1 st	2,100	1,287	3,387	3	3	6	3,393	841	318	1,159	3,685	1,069	4,754	6,629	2,677	9,306
Percentage change																
10 ^{1st} -11 ^{1st}	13.6	4.2	9.8	26.2	-2.9	15.0	11.6	30.9	-4.7	19.5	27.5	4.7	21.6	25.2	2.1	18.0
10 ^{4th} -11 ^{1st}	-57.3	-53.3	-55.9	5238.5	8200.0	5935.3	-32.5	24.8	27.5	25.4	5.5	-25.0	-3.3	-6.7	-23.8	-12.1
11 ^{1st} -11 ^{2nd}	34.9	21.5	29.8	-11.4	-12.0	-11.6	15.4	-32.3	-28.7	-31.4	2.5	25.0	7.5	1.3	11.7	4.1
11 ^{2nd} -11 ^{3rd}	7.2	-16.0	-1.0	4.4	-3.4	1.9	-0.3	29.9	6.6	23.7	11.1	20.0	13.4	11.5	5.3	9.7
11 ^{3rd} -11 ^{4th}	92.1	138.8	106.2	-99.4	-99.3	-99.4	50.0	-13.4	-2.5	-11.0	-4.0	0.6	-2.7	8.1	24.9	12.8
11 ^{4th} -12 ^{1st}	-41.9	-43.7	-42.5	275.0	50.0	200.0	-42.2	27.8	44.4	32.0	-18.1	-36.7	-23.4	-22.9	-34.1	-26.4
11 ^{2nd} -12 ^{2nd}	11.3	9.9	10.8	8.5	6.8	7.9	10.0	-2.9	7.8	-0.1	20.9	40.0	25.9	15.2	24.5	17.9
12 ^{1st} -12 ^{2nd}	-6.9	-2.7	-5.5	4346.7	10300.0	5338.9	27.4	-32.5	-28.2	-31.3	38.5	83.0	49.0	23.8	43.7	29.3
11 ^{3rd} -12 ^{3rd}	26.4	64.8	38.0	-96.6	-95.7	-96.3	1.2	-9.7	-7.3	-9.1	13.3	26.9	17.0	4.4	21.6	9.2
12 ^{2nd} -12 ^{3rd}	21.7	26.0	23.2	-96.7	-96.2	-96.5	-8.2	20.9	-8.3	12.5	4.1	8.8	5.5	1.1	2.9	1.7
11 ^{4th} -12 ^{4th}	-3.2	1.1	-1.7	25.0	-50.0	-	-1.7	-21.6	-19.8	-21.2	-17.7	-15.4	-17.0	-12.4	-8.0	-11.0
12 ^{3rd} -12 ^{4th}	47.2	46.5	46.9	-77.3	-91.7	-82.4	45.6	-24.9	-15.7	-22.7	-30.3	-32.9	-31.1	-9.2	-5.5	-8.1
12 ^{1st} -13 ^{1st}	2.7	11.8	5.8	-60.0	-100.0	-66.7	5.3	-6.6	-12.7	-8.3	13.5	17.0	14.3	7.0	10.2	7.8
12 ^{4th} -13 ^{1st}	-38.4	-37.7	-38.2	20.0	-100.0	-	-38.1	52.3	57.2	53.5	12.9	-12.4	5.6	-5.9	-21.1	-10.7
12 ^{2nd} -13 ^{2nd}	35.9	39.0	37.0	-99.9	-99.4	-99.7	1.1	9.9	0.4	7.2	-7.9	-17.1	-10.6	-4.3	-7.7	-5.4
13 ^{1st} -13 ^{2nd}	23.2	21.0	22.4	-83.3	-	-50.0	22.3	-20.5	-17.5	-19.7	12.3	29.6	16.5	10.8	20.3	13.5
12 ^{3rd} -13 ^{3rd}	12.6	16.2	13.9	-77.3	-75.0	-76.5	13.0	-14.9	-10.6	-13.9	-2.3	-13.9	-5.7	0.2	-3.9	-1.1
13 ^{2nd} -13 ^{3rd}	0.8	5.3	2.4	400.0	50.0	166.7	2.5	-6.4	-18.3	-9.6	10.5	13.0	11.2	5.8	7.2	6.3
12 ^{4th} -13 ^{4th}	12.1	15.0	13.1	140.0	1100.0	300.0	13.4	-1.7	4.2	-0.2	20.2	18.5	19.7	14.9	16.1	15.3
13 ^{3rd} -13 ^{4th}	46.5	44.9	45.9	140.0	300.0	200.0	46.2	-13.3	-1.8	-10.5	-14.2	-7.6	-12.4	4.1	14.1	7.1
13 ^{1st} -14 ^{1st}	6.8	15.8	10.1	-50.0	-	0.0	10.1	-12.5	-5.9	-10.8	-8.7	-16.7	-10.6	-4.9	-2.0	-4.1
13 ^{4th} -14 ^{1st}	-41.3	-37.3	-39.8	-75.0	-75.0	-75.0	-40.0	35.6	42.0	37.3	-14.2	-38.5	-21.2	-22.0	-33.5	-25.7

Chart 1: Arrivals by category 1st quarter 2014

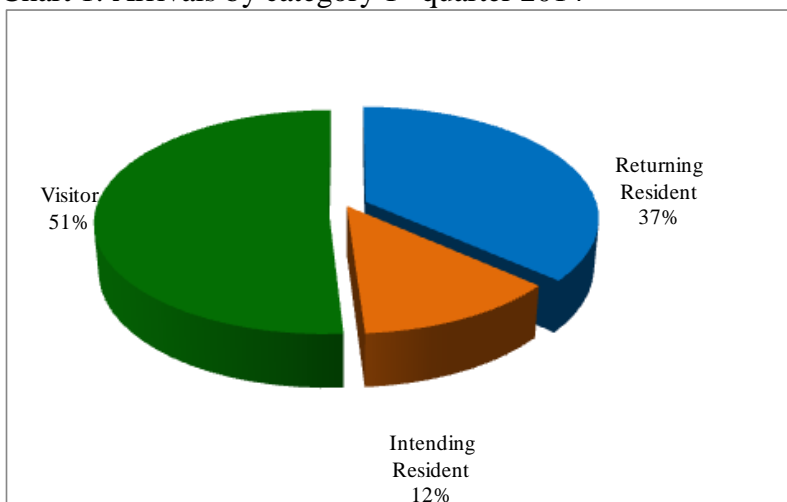


Table 2: Visitor Arrivals by Country of Residence by year by quarter: 1st Quarter 2014

Country of Usual Residence	2010			2011					2012					2013					2014
	Q3	Q4	Total	Q1	Q2	Q3	Q4	Total	Q1	Q2	Q3	Q4	Total	Q1	Q2	Q3	Q4	Total	Q1
Australia	3,362	2,758	10,751	2,569	2,763	3,042	3,018	11,392	2,238	2,963	3,404	2,474	11,079	2,282	3,049	3,001	2,849	11,181	2,088
PNG	339	469	1,361	443	479	589	546	2,057	431	602	476	464	1,973	458	417	621	523	2,019	383
US	287	212	862	188	243	368	241	1,040	183	356	561	234	1,334	231	325	357	248	1,161	231
NZ	647	454	1,710	385	433	479	427	1,724	285	545	560	357	1,747	381	531	607	386	1,905	277
UK	141	101	432	78	110	101	91	380	81	84	151	69	385	104	110	152	94	460	65
Japan	151	177	589	145	106	229	161	641	162	112	211	129	614	128	116	179	178	601	137
Germany	26	18	101	22	26	38	25	111	22	40	29	26	117	33	19	35	49	136	15
Canada	25	34	113	51	30	55	56	192	29	25	30	27	111	28	35	40	45	148	38
Oth.Pacific	123	170	585	185	185	170	223	763	101	811	371	135	1,418	188	142	202	228	760	139
Vanuatu	126	145	405	125	103	100	185	513	121	148	179	147	595	250	185	191	178	804	117
Hong Kong	23	5	38	12	12	22	84	130	14	20	21	25	80	16	18	33	14	81	35
Fiji	273	234	991	262	327	285	330	1,204	300	510	444	301	1,555	451	424	528	397	1,800	351
Other Asia	509	336	1,825	487	523	562	484	2,056	500	544	577	484	2,105	623	655	743	604	2,625	689
Netherlands	16	17	53	18	13	20	13	64	12	11	23	11	57	10	6	24	23	63	7
Oth.Europe	100	66	307	60	62	63	61	246	76	74	121	50	321	53	57	70	107	287	119
France	24	22	82	10	20	22	8	60	24	19	36	9	88	21	21	26	25	93	21
Italy	13	19	39	13	17	20	30	80	13	12	40	28	93	16	18	16	33	83	14
Oth.Country	77	58	277	66	53	79	90	288	59	53	73	68	253	45	67	62	50	224	28
Total	6,262	5,295	20,521	5,119	5,505	6,244	6,073	22,941	4,651	6,929	7,307	5,038	23,925	5,318	6,195	6,887	6,031	24,431	4,754
Percentage																			
Australia	53.7	52.1	52.4	50.2	50.2	48.7	49.7	49.7	48.1	42.8	46.6	49.1	46.3	42.9	49.2	43.6	47.2	45.8	43.9
PNG	5.4	8.9	6.6	8.7	8.7	9.4	9.0	9.0	9.3	8.7	6.5	9.2	8.2	8.6	6.7	9.0	8.7	8.3	8.1
US	4.6	4.0	4.2	3.7	4.4	5.9	4.0	4.5	3.9	5.1	7.7	4.6	5.6	4.3	5.2	5.2	4.1	4.8	4.9
NZ	10.3	8.6	8.3	7.5	7.9	7.7	7.0	7.5	6.1	7.9	7.7	7.1	7.3	7.2	8.6	8.8	6.4	7.8	5.8
UK	2.3	1.9	2.1	1.5	2.0	1.6	1.5	1.7	1.7	1.2	2.1	1.4	1.6	2.0	1.8	2.2	1.6	1.9	1.4
Japan	2.4	3.3	2.9	2.8	1.9	3.7	2.7	2.8	3.5	1.6	2.9	2.6	2.6	2.4	1.9	2.6	3.0	2.5	2.9
Germany	0.4	0.3	0.5	0.4	0.5	0.6	0.4	0.5	0.5	0.6	0.4	0.5	0.5	0.6	0.3	0.5	0.8	0.6	0.3
Canada	0.4	0.6	0.6	1.0	0.5	0.9	0.9	0.8	0.6	0.4	0.4	0.5	0.5	0.5	0.6	0.6	0.7	0.6	0.8
Oth.Pacific	2.0	3.2	2.9	3.6	3.4	2.7	3.7	3.3	2.2	11.7	5.1	2.7	5.9	3.5	2.3	2.9	3.8	3.1	2.9
Vanuatu	2.0	2.7	2.0	2.4	1.9	1.6	3.0	2.2	2.6	2.1	2.4	2.9	2.5	4.7	3.0	2.8	3.0	3.3	2.5
Hong Kong	0.4	0.1	0.2	0.2	0.2	0.4	1.4	0.6	0.3	0.3	0.3	0.5	0.3	0.3	0.3	0.5	0.2	0.3	0.7
Fiji	4.4	4.4	4.8	5.1	5.9	4.6	5.4	5.2	6.5	7.4	6.1	6.0	6.5	8.5	6.8	7.7	6.6	7.4	7.4
Oth.Asia	8.1	6.3	8.9	9.5	9.5	9.0	8.0	9.0	10.8	7.9	7.9	9.6	8.8	11.7	10.6	10.8	10.0	10.7	14.5
Netherlands	0.3	0.3	0.3	0.4	0.2	0.3	0.2	0.3	0.3	0.2	0.3	0.2	0.2	0.2	0.1	0.3	0.4	0.3	0.1
Oth.Europe	1.6	1.2	1.5	1.2	1.1	1.0	1.0	1.1	1.6	1.1	1.7	1.0	1.3	1.0	0.9	1.0	1.8	1.2	2.5
France	0.4	0.4	0.4	0.2	0.4	0.4	0.1	0.3	0.5	0.3	0.5	0.2	0.4	0.4	0.3	0.4	0.4	0.4	0.4
Italy	0.2	0.4	0.2	0.3	0.3	0.3	0.5	0.3	0.3	0.2	0.5	0.6	0.4	0.3	0.3	0.2	0.5	0.3	0.3
Oth.Country	1.2	1.1	1.3	1.3	1.0	1.3	1.5	1.3	1.3	0.8	1.0	1.3	1.1	0.8	1.1	0.9	0.8	0.9	0.6
Total	100	100.0	100.0	100.0	100.0	100.0	100.0	100.0	100.0	100.0	100.0	100.0	100.0	100.0	100.0	100.0	100.0	100.0	100.0

Chart 2: Visitors Arrival by Country of residence by quarter, 1st quarter 2014

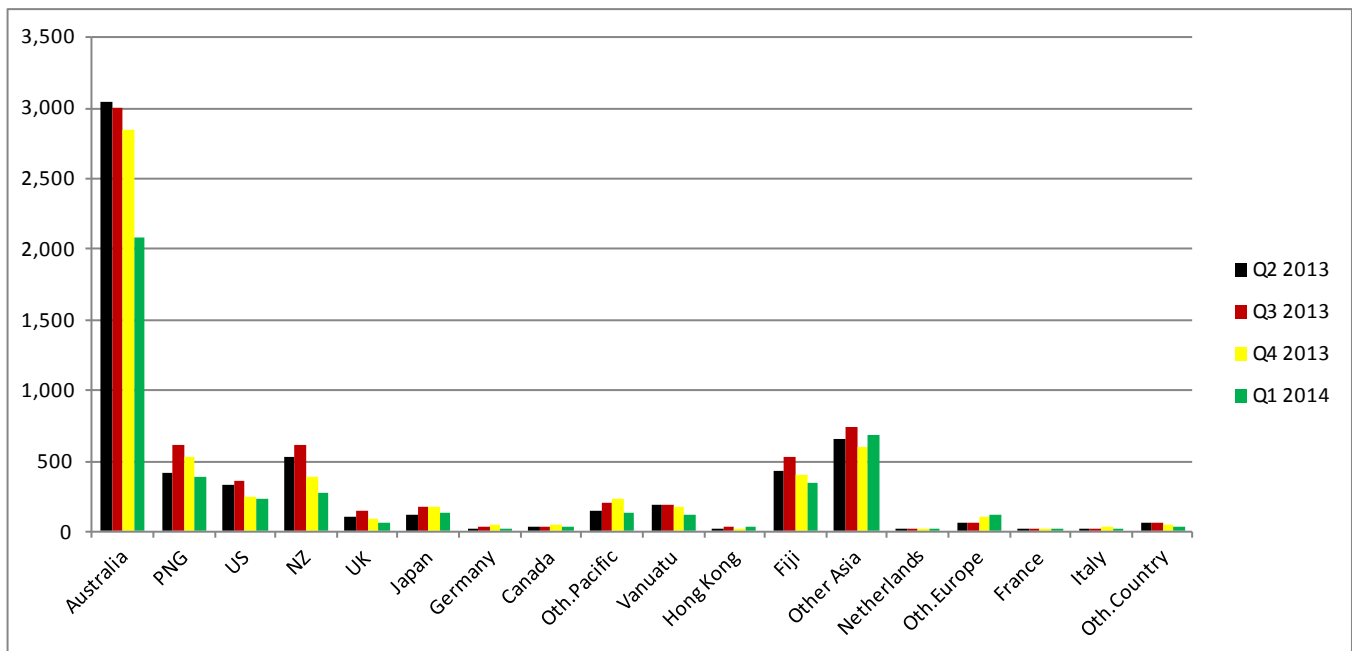


Table 3: Visitor Arrivals by Month: 2006 – 1st Quarter 2014

Month	2006	2007	2008	2009	2010	2011	2012	2013	2014
January	952	546	889	1,602	1,235	1,600	1,383	1,590	1,415
February	838	1,020	1,282	1,422	1,209	1,658	1,591	1,544	1,523
March	972	1,251	802	1,249	1,766	1,861	1,677	2,184	1,816
April	994	1,452	1,388	1,499	1,820	1,736	1,839	2,021	
May	858	1,137	1,261	1,393	1,137	1,760	1,968	1,857	
June	1,289	1,265	1,552	1,724	1,797	2,009	3,122	2,317	
July	865	822	1,692	1,603	2,264	2,185	2,865	2,574	
August	892	1,299	1,469	1,520	1,845	1,900	2,133	2,022	
September	681	1,299	1,457	1,659	2,153	2,159	2,309	2,291	
October	942	1,260	1,399	1,709	1,813	1,931	1,929	2057	
November	1,118	1,246	1,545	1,475	1,624	2,195	1,545	1981	
December	1,081	1,151	1,528	1,405	1,858	1,947	1,564	1993	
Total	11,482	13,748	16,264	18,260	20,521	22,941	23,925	24,431	4,754
Percentage									
January	8.3	4.0	5.5	8.8	5.5	7.0	5.8	6.5	29.8
February	7.3	7.4	7.9	7.8	5.4	7.2	6.6	6.3	32.0
March	8.5	9.1	4.9	6.8	7.8	8.1	7.0	8.9	38.2
April	8.7	10.6	8.5	8.2	8.1	7.6	7.7	8.3	
May	7.5	8.3	7.8	7.6	5.0	7.7	8.2	7.6	
June	11.2	9.2	9.5	9.4	8.0	8.8	13.0	9.5	
July	7.5	6.0	10.4	8.8	10.0	9.5	12.0	10.5	
August	7.8	9.4	9.0	8.3	8.2	8.3	8.9	8.3	
September	5.9	9.4	9.0	9.1	9.6	9.4	9.7	9.4	
October	8.2	9.2	8.6	9.4	8.0	8.4	8.1	8.4	
November	9.7	9.1	9.5	8.1	7.2	9.6	6.5	8.1	
December	9.4	8.4	9.4	7.7	8.2	8.5	6.5	8.2	
Total	100	100.0	100.0	100.0	100.0	100.0	100.0	100.0	100.0

Chart 3: Visitors Arrival by month, 2011 – 1st quarter 2014

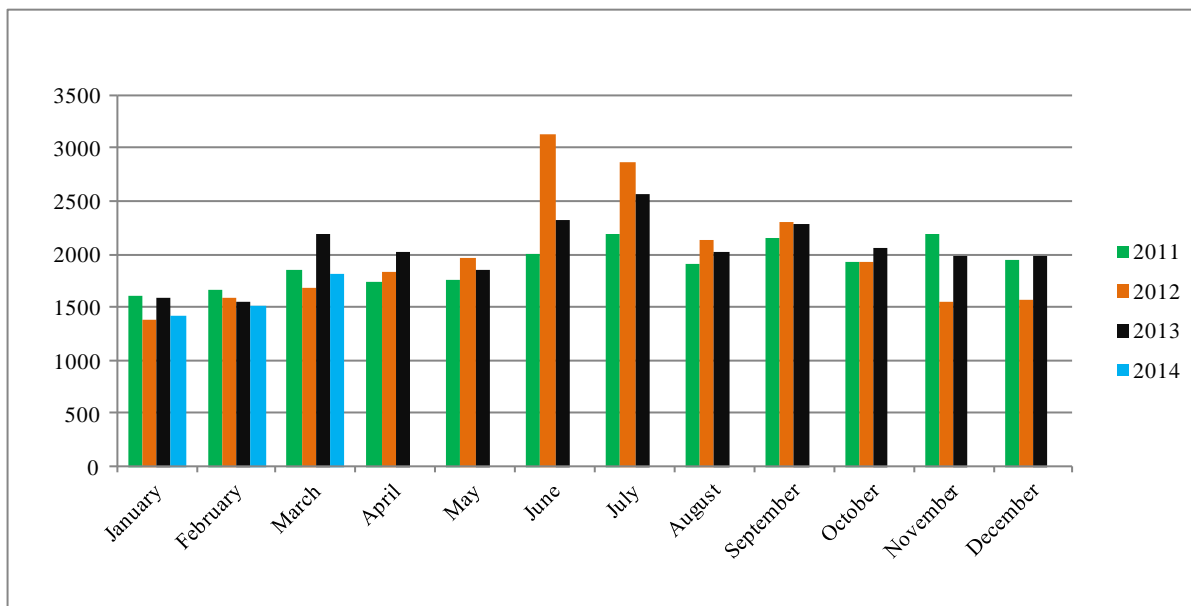


Table 4: Visitors, classified as tourists by Country of residence by year, quarter and average length of stay: 3rd Quarter 2011 – 1st Quarter 2014

Country of Usual Residence	2011				2012								2013								2014	
	Quarter 3		Quarter 4		Quarter 1		Quarter 2		Quarter 3		Quarter 4		Quarter 1		Quarter 2		Quarter 3		Quarter 4		Quarter 1	
	tourist	day	tourist	day	tourist	day	tourist	day	tourist	day	tourist	day	tourist	day	tourist	day	tourist	day	tourist	day	tourist	day
Australia	1,034	15	915	20	511	12	891	13	1,193	12	808	14	507	13	981	11	943	12	914	13	484	13
PNG	72	16	67	30	23	14	54	13	58	15	66	20	43	10	39	12	43	10	105	29	42	14
US	191	13	102	13	65	10	182	12	251	10	116	11	75	11	136	12	182	13	128	14	82	13
NZ	102	17	70	20	24	11	69	13	115	12	57	16	30	15	95	15	62	18	69	22	13	13
UK	42	23	34	16	25	18	28	32	36	20	40	18	31	25	39	21	76	23	31	18	25	24
Japan	95	15	51	7	53	7	41	7	92	9	52	7	38	13	33	19	59	10	75	8	37	7
Germany	24	17	17	12	14	18	21	20	15	12	12	17	25	13	9	11	21	11	33	22	9	16
Canada	14	14	28	15	8	15	10	22	12	15	13	11	14	20	12	10	14	16	20	11	8	11
Oth.Pacific	15	16	21	23	11	14	38	14	68	13	7	17	18	10	16	15	21	15	30	10	8	9
Vanuatu	20	17	27	25	21	7	15	10	19	10	25	19	50	6	17	8	12	13	34	17	17	2
Hong Kong	11	12	23	19	3	18	6	16	8	9	10	20	6	11	8	21	8	14	3	27	10	10
Fiji	26	20	20	21	22	19	29	26	42	20	22	32	29	22	12	18	14	9	37	14	21	14
Oth.Asia	142	22	81	16	107	22	101	22	126	29	104	24	108	21	119	25	164	15	151	20	150	21
Netherlands	9	20	10	20	5	21	7	27	10	14	7	15	1	7	2	13	6	23	13	14	3	13
Oth.Europe	37	18	26	18	43	14	43	14	86	13	17	20	25	13	33	14	30	13	58	15	66	12
France	15	20	4	12	14	16	2	25	19	13	1	14	9	16	8	8	13	17	15	33	7	11
Italy	6	18	18	19	4	21	1	30	28	13	13	54	4	32	7	25	7	11	15	46	5	10
Oth.Country	26	16	44	16	14	9	9	18	30	12	20	12	9	14	22	7	17	12	23	21	1	20
Total	1,881	16	1,558	15	967	13	1,547	14	2,208	13	1,390	16	1,022	14	1,588	13	1,692	13	1,754	16	988	14

Chart 4: Tourist Arrivals by Country of Residence, 1st Quarter 2014

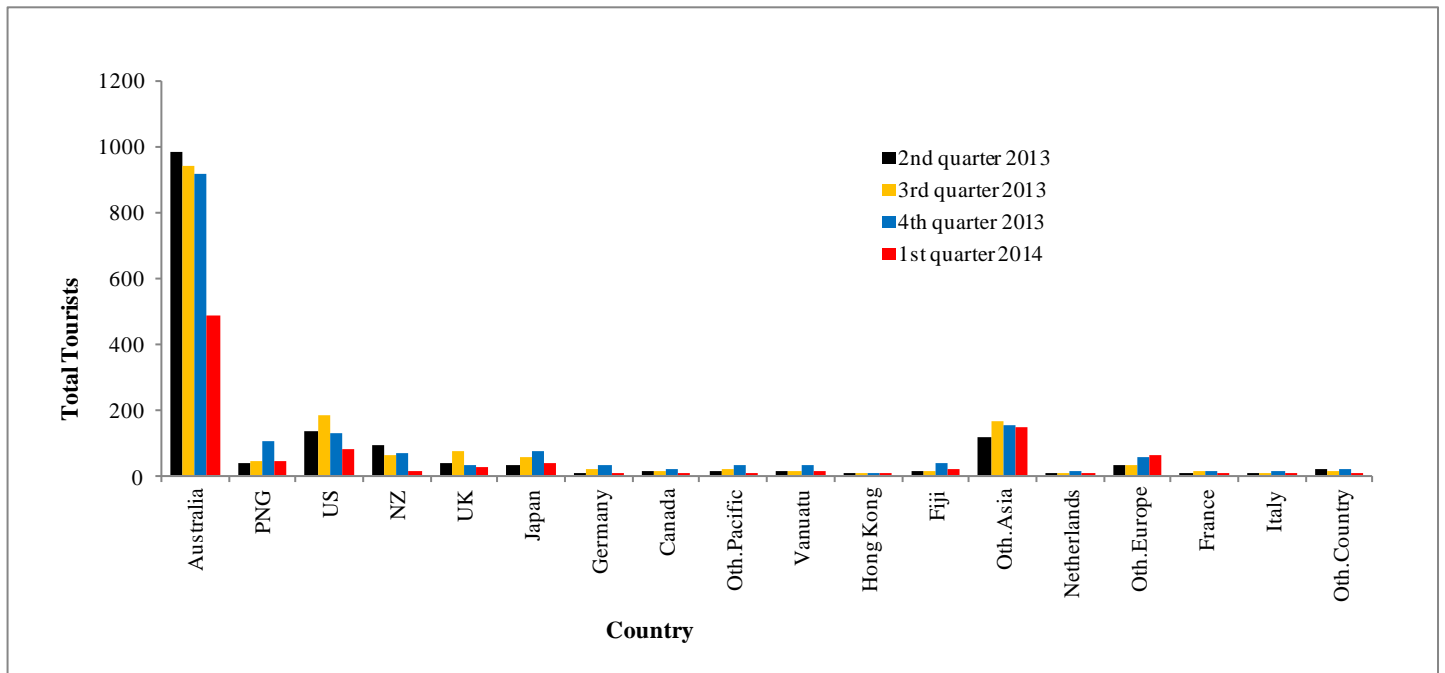


Table 5: Visitor Arrivals by Country of Residence by Purpose of Visit by sex: 1st Quarter 2014

Country of Usual Residence	Business & Conference			Holiday & Vocation			Transit & Stopover			Visit friends/Relatives			Other			Total		
	M	F	T	M	F	T	M	F	T	M	F	T	M	F	T	M	F	All
Australia	641	133	774	325	153	478	5	1	6	157	134	291	431	108	539	1,559	529	2,088
PNG	114	23	137	19	6	25	14	3	17	37	14	51	145	8	153	329	54	383
US	73	10	83	45	23	68	14	-	14	10	6	16	34	16	50	176	55	231
NZ	145	19	164	6	7	13	-	-	-	28	11	39	45	16	61	224	53	277
UK	15	7	22	15	10	25	-	-	-	5	2	7	8	3	11	43	22	65
Japan	79	5	84	28	9	37	-	-	-	7	1	8	8	-	8	122	15	137
Germany	1	1	2	6	2	8	1	-	1	-	1	1	3	-	3	11	4	15
Canada	12	3	15	5	3	8	-	-	-	5	2	7	7	1	8	29	9	38
Oth.Pacific	64	24	88	2	6	8	-	-	-	11	7	18	19	6	25	96	43	139
Vanuatu	31	11	42	3	-	3	7	7	14	13	15	28	20	10	30	74	43	117
Hong Kong	12	3	15	7	3	10	-	-	-	2	2	4	4	2	6	25	10	35
Fiji	129	53	182	11	6	17	4	-	4	28	11	39	91	18	109	263	88	351
Oth.Asia	226	34	260	97	31	128	22	-	22	65	8	73	186	20	206	596	93	689
Netherlands	1	-	1	3	-	3	-	-	-	-	-	-	3	-	3	7	-	7
Oth.Europe	23	6	29	37	22	59	7	-	7	4	4	8	10	6	16	81	38	119
France	8	1	9	5	2	7	-	-	-	2	-	2	3	-	3	18	3	21
Italy	1	-	1	3	2	5	-	-	-	4	1	5	1	2	3	9	5	14
Oth.Country	15	3	18	-	1	1	-	-	-	2	-	2	6	1	7	23	5	28
Total	1,590	336	1,926	617	286	903	74	11	85	380	219	599	1,024	217	1,241	3,685	1,069	4,754
	Percentage																	
Australia	30.7	6.4	37.1	15.6	7.3	22.9	0.2	-	0.3	7.5	6.4	13.9	20.6	5.2	25.8	74.7	25.3	100.0
PNG	29.8	6.0	35.8	5.0	1.6	6.5	3.7	0.8	4.4	9.7	3.7	13.3	37.9	2.1	39.9	85.9	14.1	100.0
US	31.6	4.3	35.9	19.5	10.0	29.4	6.1	-	6.1	4.3	2.6	6.9	14.7	6.9	21.6	76.2	23.8	100.0
NZ	52.3	6.9	59.2	2.2	2.5	4.7	-	-	-	10.1	4.0	14.1	16.2	5.8	22.0	80.9	19.1	100.0
UK	23.1	10.8	33.8	23.1	15.4	38.5	-	-	-	7.7	3.1	10.8	12.3	4.6	16.9	66.2	33.8	100.0
Japan	57.7	3.6	61.3	20.4	6.6	27.0	-	-	-	5.1	0.7	5.8	5.8	-	5.8	89.1	10.9	100.0
Germany	6.7	6.7	13.3	40.0	13.3	53.3	6.7	-	6.7	-	6.7	6.7	20.0	-	20.0	73.3	26.7	100.0
Canada	31.6	7.9	39.5	13.2	7.9	21.1	-	-	-	13.2	5.3	18.4	18.4	2.6	21.1	76.3	23.7	100.0
Oth.Pacific	46.0	17.3	63.3	1.4	4.3	5.8	-	-	-	7.9	5.0	12.9	13.7	4.3	18.0	69.1	30.9	100.0
Vanuatu	26.5	9.4	35.9	2.6	-	2.6	6.0	6.0	12.0	11.1	12.8	23.9	17.1	8.5	25.6	63.2	36.8	100.0
Hong Kong	34.3	8.6	42.9	20.0	8.6	28.6	-	-	-	5.7	5.7	11.4	11.4	5.7	17.1	71.4	28.6	100.0
Fiji	36.8	15.1	51.9	3.1	1.7	4.8	1.1	-	1.1	8.0	3.1	11.1	25.9	5.1	31.1	74.9	25.1	100.0
Oth.Asia	32.8	4.9	37.7	14.1	4.5	18.6	3.2	-	3.2	9.4	1.2	10.6	27.0	2.9	29.9	86.5	13.5	100.0
Netherlands	14.3	-	14.3	42.9	-	42.9	-	-	-	-	-	-	42.9	-	42.9	100.0	-	100.0
Oth.Europe	19.3	5.0	24.4	31.1	18.5	49.6	5.9	-	5.9	3.4	3.4	6.7	8.4	5.0	13.4	68.1	31.9	100.0
France	38.1	4.8	42.9	23.8	9.5	33.3	-	-	-	9.5	-	9.5	14.3	-	14.3	85.7	14.3	100.0
Italy	7.1	-	7.1	21.4	14.3	35.7	-	-	-	28.6	7.1	35.7	7.1	14.3	21.4	64.3	35.7	100.0
Oth.Country	53.6	10.7	64.3	-	3.6	3.6	-	-	-	7.1	-	7.1	21.4	3.6	25.0	82.1	17.9	100.0
Total	33.4	7.1	40.5	13.0	6.0	19.0	1.6	0.2	1.8	8.0	4.6	12.6	21.5	4.6	26.1	77.5	22.5	100.0

Chart 5: Visitors Arrival by Country of Residence by Purpose of Visit, 1st quarter 2014

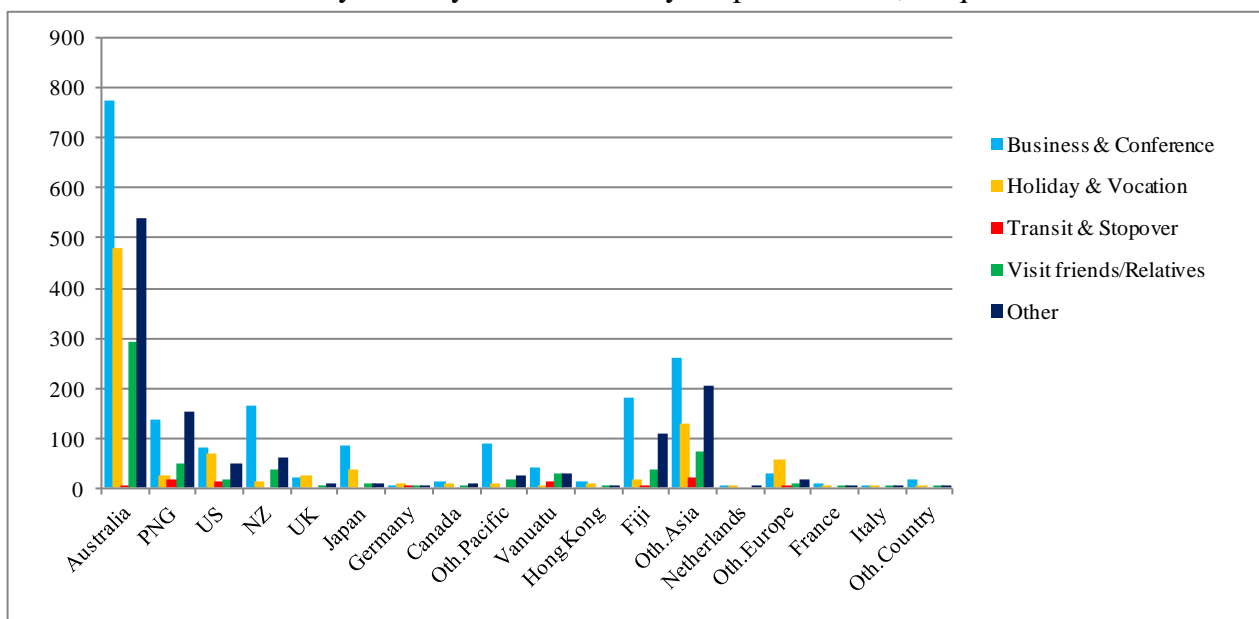


Table 6: Visitor Arrivals by Country of Residence by Age Groups by Sex: 1st Quarter 2014

Country of Usual Residence	Age-Group																		
	0-14		15-24		25-34		35-44		45-54		55-64		65+		Not Stated		Total		
	M	F	M	F	M	F	M	F	M	F	M	F	M	F	M	F	M	F	All
Australia	19	18	73	53	209	127	385	102	402	96	287	77	127	35	57	21	1,559	529	2,088
PNG	4	7	6	-	63	14	109	12	98	9	31	7	7	-	11	5	329	54	383
US	3	3	1	2	26	5	36	12	48	5	37	16	22	9	3	3	176	55	231
NZ	3	1	5	5	19	12	37	6	67	16	53	10	30	2	10	1	224	53	277
UK	-	-	5	5	2	4	7	1	8	4	6	3	15	5	-	-	43	22	65
Japan	-	-	4	1	15	5	39	1	24	3	24	4	15	1	1	-	122	15	137
Germany	-	-	-	1	1	-	1	1	4	2	3	-	2	-	-	-	11	4	15
Canada	-	-	1	-	6	2	7	2	7	1	6	3	2	1	-	-	29	9	38
Oth.Pacific	1	1	2	-	14	9	30	15	27	7	14	4	5	3	3	4	96	43	139
Vanuatu	7	7	9	8	6	10	19	10	8	3	12	3	6	2	7	-	74	43	117
Hong Kong	-	-	-	-	2	1	1	-	7	7	13	2	2	-	-	-	25	10	35
Fiji	1	1	19	13	53	26	83	25	63	18	35	4	5	-	4	1	263	88	351
Oth.Asia	2	1	36	10	118	32	168	16	159	23	88	6	16	3	9	2	596	93	689
Netherlands	-	-	-	-	-	-	2	-	1	-	4	-	-	-	-	-	7	-	7
Oth.Europe	2	1	3	2	10	3	20	10	18	6	14	9	12	6	2	1	81	38	119
France	-	-	1	-	7	1	5	1	4	-	1	-	-	1	-	-	18	3	21
Italy	-	-	-	-	-	-	4	2	4	-	1	3	-	-	-	-	9	5	14
Oth.Country	-	-	-	-	2	-	9	4	6	-	5	-	1	1	-	-	23	5	28
Total	42	40	165	100	553	251	962	220	955	200	634	151	267	69	107	38	3,685	1,069	4,754
Percentage																			
Australia	0.9	0.9	3.5	2.5	10.0	6.1	18.4	4.9	19.3	4.6	13.7	3.7	6.1	1.7	2.7	1.0	74.7	25.3	100.0
PNG	1.0	1.8	1.6	-	16.4	3.7	28.5	3.1	25.6	2.3	8.1	1.8	1.8	-	2.9	1.3	85.9	14.1	100.0
US	1.3	1.3	0.4	0.9	11.3	2.2	15.6	5.2	20.8	2.2	16.0	6.9	9.5	3.9	1.3	1.3	76.2	23.8	100.0
NZ	1.1	0.4	1.8	1.8	6.9	4.3	13.4	2.2	24.2	5.8	19.1	3.6	10.8	0.7	3.6	0.4	80.9	19.1	100.0
UK	-	-	7.7	7.7	3.1	6.2	10.8	1.5	12.3	6.2	9.2	4.6	23.1	7.7	-	-	66.2	33.8	100.0
Japan	-	-	2.9	0.7	10.9	3.6	28.5	0.7	17.5	2.2	17.5	2.9	10.9	0.7	0.7	-	89.1	10.9	100.0
Germany	-	-	-	6.7	6.7	-	6.7	6.7	26.7	13.3	20.0	-	13.3	-	-	-	73.3	26.7	100.0
Canada	-	-	2.6	-	15.8	5.3	18.4	5.3	18.4	2.6	15.8	7.9	5.3	2.6	-	-	76.3	23.7	100.0
Oth.Pacific	0.7	0.7	1.4	-	10.1	6.5	21.6	10.8	19.4	5.0	10.1	2.9	3.6	2.2	2.2	2.9	69.1	30.9	100.0
Vanuatu	6.0	6.0	7.7	6.8	5.1	8.5	16.2	8.5	6.8	2.6	10.3	2.6	5.1	1.7	6.0	-	63.2	36.8	100.0
Hong Kong	-	-	-	-	5.7	2.9	2.9	-	20.0	20.0	37.1	5.7	5.7	-	-	-	71.4	28.6	100.0
Fiji	0.3	0.3	5.4	3.7	15.1	7.4	23.6	7.1	17.9	5.1	10.0	1.1	1.4	-	1.1	0.3	74.9	25.1	100.0
Oth.Asia	0.3	0.1	5.2	1.5	17.1	4.6	24.4	2.3	23.1	3.3	12.8	0.9	2.3	0.4	1.3	0.3	86.5	13.5	100.0
Netherlands	-	-	-	-	-	-	28.6	-	14.3	-	57.1	-	-	-	-	-	100.0	-	100.0
Oth.Europe	1.7	0.8	2.5	1.7	8.4	2.5	16.8	8.4	15.1	5.0	11.8	7.6	10.1	5.0	1.7	0.8	68.1	31.9	100.0
France	-	-	4.8	-	33.3	4.8	23.8	4.8	19.0	-	4.8	-	-	4.8	-	-	85.7	14.3	100.0
Italy	-	-	-	-	-	-	28.6	14.3	28.6	-	7.1	21.4	-	-	-	-	64.3	35.7	100.0
Oth.Country	-	-	-	-	7.1	-	32.1	14.3	21.4	-	17.9	-	3.6	3.6	-	-	82.1	17.9	100.0
Total	0.9	0.8	3.5	2.1	11.6	5.3	20.2	4.6	20.1	4.2	13.3	3.2	5.6	1.5	2.3	0.8	77.5	22.5	100.0

Chart 6: Visitor Arrivals by Age group category by sex, 1st quarter 2014

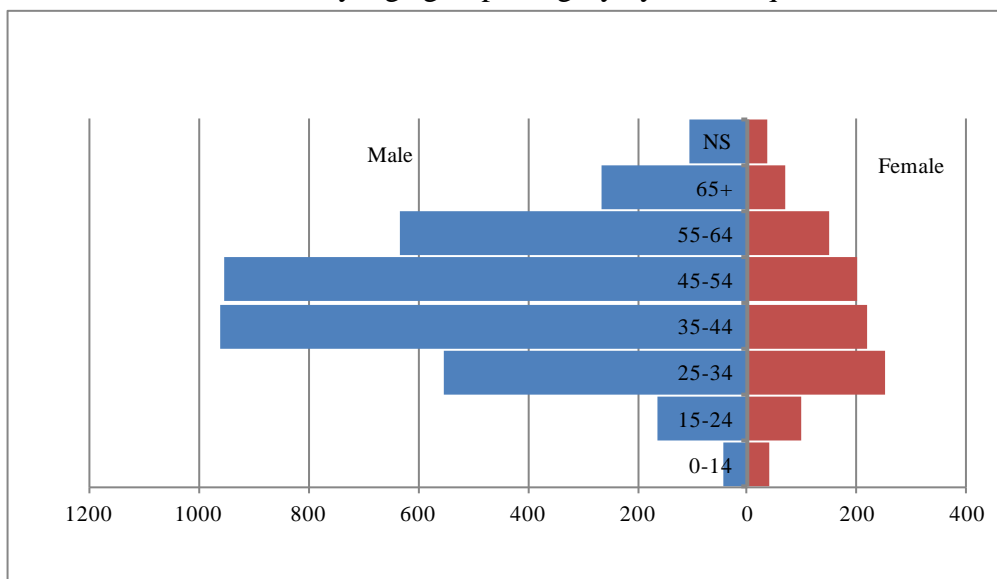


Table 7: Visitor Arrivals by Country of Residence by Occupation and Sex: 1st Quarter 2014

Country of Usual Residence	Professional and Technical		Administration and Managerial		Clerical & Related Work		Sales Worker		Service Worker		Agriculture Forestry Fishery		Production & Related Work		Other		No Work		Total		
	M	F	M	F	M	F	M	F	M	F	M	F	M	F	M	F	M	F	M	F	All
	Australia	458	190	205	45	8	11	11	1	75	20	25	1	118	-	581	207	78	54	1,559	529
PNG	84	19	35	4	-	-	2	-	9	3	7	-	34	1	152	24	6	3	329	54	383
US	56	17	7	2	1	3	2	-	15	1	-	-	2	-	74	20	19	12	176	55	231
NZ	65	16	43	5	1	-	2	-	8	6	-	-	5	-	88	22	12	4	224	53	277
UK	9	8	9	-	-	-	-	-	-	-	-	-	2	-	14	11	9	3	43	22	65
Japan	47	1	4	-	9	1	-	1	-	3	-	-	2	-	55	7	5	2	122	15	137
Germany	3	2	-	-	-	-	-	-	-	-	-	-	-	-	7	2	1	-	11	4	15
Canada	7	2	3	-	-	-	-	-	-	1	-	1	-	-	18	4	1	1	29	9	38
Oth.Pacific	17	7	10	1	1	-	-	-	13	3	-	-	1	-	51	29	3	3	96	43	139
Vanuatu	30	18	9	3	-	1	1	-	1	6	1	-	1	-	23	13	8	2	74	43	117
Hong Kong	1	-	9	1	1	1	1	-	-	3	-	-	-	-	13	5	-	-	25	10	35
Fiji	81	31	33	2	1	-	1	-	27	1	23	1	4	-	88	48	5	5	263	88	351
Oth.Asia	70	10	105	5	2	4	64	4	6	10	11	1	73	2	212	38	53	19	596	93	689
Netherlands	1	-	1	-	-	-	-	-	-	-	-	-	1	-	4	-	-	-	7	-	7
Oth.Europe	20	9	12	4	-	2	-	-	-	-	1	-	5	-	32	14	11	9	81	38	119
France	6	-	1	-	-	-	-	-	2	-	-	-	1	-	7	2	1	1	18	3	21
Italy	1	1	-	-	2	1	-	-	2	-	1	-	-	-	3	3	-	-	9	5	14
Oth.Country	10	3	-	-	-	-	1	-	1	-	-	-	1	-	10	2	-	-	23	5	28
Total	966	334	486	72	26	24	85	6	159	57	69	4	250	3	1,432	451	212	118	3,685	1,069	4,754
	Percentage																				
Australia	21.9	9.1	9.8	2.2	0.4	0.5	0.5	-	3.6	1.0	1.2	-	5.7	-	27.8	9.9	3.7	2.6	74.7	25.3	100.0
PNG	21.9	5.0	9.1	1.0	-	-	0.5	-	2.3	0.8	1.8	-	8.9	0.3	39.7	6.3	1.6	0.8	85.9	14.1	100.0
US	24.2	7.4	3.0	0.9	0.4	1.3	0.9	-	6.5	0.4	-	-	0.9	-	32.0	8.7	8.2	5.2	76.2	23.8	100.0
NZ	23.5	5.8	15.5	1.8	0.4	-	0.7	-	2.9	2.2	-	-	1.8	-	31.8	7.9	4.3	1.4	80.9	19.1	100.0
UK	13.8	12.3	13.8	-	-	-	-	-	-	-	-	-	3.1	-	21.5	16.9	13.8	4.6	66.2	33.8	100.0
Japan	34.3	0.7	2.9	-	6.6	0.7	-	0.7	-	2.2	-	-	1.5	-	40.1	5.1	3.6	1.5	89.1	10.9	100.0
Germany	20.0	13.3	-	-	-	-	-	-	-	-	-	-	-	-	46.7	13.3	6.7	-	73.3	26.7	100.0
Canada	18.4	5.3	7.9	-	-	-	-	-	-	2.6	-	2.6	-	-	47.4	10.5	2.6	2.6	76.3	23.7	100.0
Oth.Pacific	12.2	5.0	7.2	0.7	0.7	-	-	-	9.4	2.2	-	-	0.7	-	36.7	20.9	2.2	2.2	69.1	30.9	100.0
Vanuatu	25.6	15.4	7.7	2.6	-	0.9	0.9	-	0.9	5.1	0.9	-	0.9	-	19.7	11.1	6.8	1.7	63.2	36.8	100.0
Hong Kong	2.9	-	25.7	2.9	2.9	2.9	2.9	-	-	8.6	-	-	-	-	37.1	14.3	-	-	71.4	28.6	100.0
Fiji	23.1	8.8	9.4	0.6	0.3	-	0.3	-	7.7	0.3	6.6	0.3	1.1	-	25.1	13.7	1.4	1.4	74.9	25.1	100.0
Oth.Asia	10.2	1.5	15.2	0.7	0.3	0.6	9.3	0.6	0.9	1.5	1.6	0.1	10.6	0.3	30.8	5.5	7.7	2.8	86.5	13.5	100.0
Netherlands	14.3	-	14.3	-	-	-	-	-	-	-	-	-	14.3	-	57.1	-	-	-	100.0	-	100.0
Oth.Europe	16.8	7.6	10.1	3.4	-	1.7	-	-	-	-	0.8	-	4.2	-	26.9	11.8	9.2	7.6	68.1	31.9	100.0
France	28.6	-	4.8	-	-	-	-	-	9.5	-	-	-	4.8	-	33.3	9.5	4.8	4.8	85.7	14.3	100.0
Italy	7.1	7.1	-	-	14.3	7.1	-	-	14.3	-	7.1	-	-	-	21.4	21.4	-	-	64.3	35.7	100.0
Oth.Country	35.7	10.7	-	-	-	-	3.6	-	3.6	-	-	-	3.6	-	35.7	7.1	-	-	82.1	17.9	100.0
Total	20.3	7.0	10.2	1.5	0.5	0.5	1.8	0.1	3.3	1.2	1.5	0.1	5.3	0.1	30.1	9.5	4.5	2.5	77.5	22.5	100.0

Chart 7: Visitors Arrival by occupation by sex, 1st quarter 2014

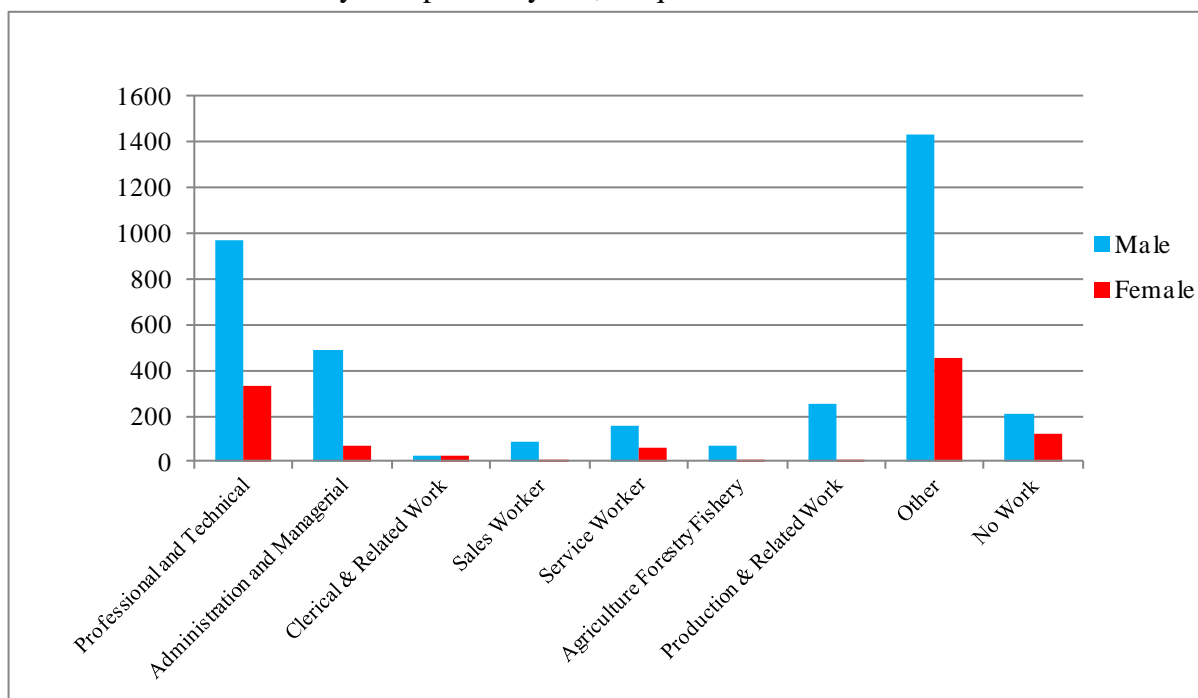
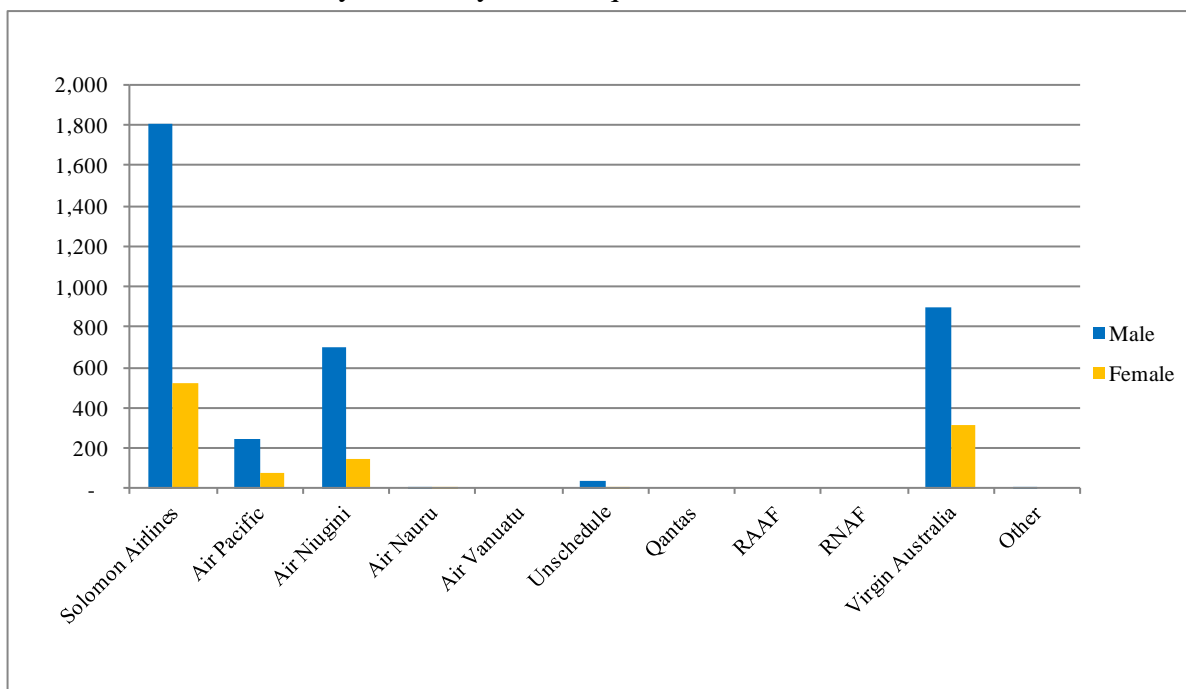


Table 8: Visitor Arrivals by Country of residence by Carrier by Sex: 1st Quarter 2014

Country of Usual Residence	Solomon Airlines		Air Pacific		Air Niugini		Air Nauru		Air Vanuatu		Unschedule		Qantas		RAAF		RNAS		Virgin Australia		Other		Total		
	M	F	M	F	M	F	M	F	M	F	M	F	M	F	M	F	M	F	M	F	M	F	M	F	All
	Australia	894	292	11	2	38	9	1	-	-	-	5	-	-	-	-	-	-	-	610	226	-	-	1,559	529
PNG	19	2	5	2	296	47	-	-	-	-	1	-	-	-	-	-	-	-	8	3	-	-	329	54	383
US	64	14	51	25	19	6	-	-	-	-	20	1	-	-	-	-	-	-	22	9	-	-	176	55	231
NZ	103	19	8	-	12	3	-	-	-	-	-	-	-	-	-	-	-	-	101	31	-	-	224	53	277
UK	28	12	1	-	4	2	-	-	-	-	-	-	-	-	-	-	-	-	10	8	-	-	43	22	65
Japan	53	4	3	1	51	7	-	-	-	-	-	-	-	-	-	-	-	-	14	3	1	-	122	15	137
Germany	5	3	3	-	-	-	-	-	-	-	-	-	-	-	-	-	-	-	3	1	-	-	11	4	15
Canada	15	3	6	5	2	-	-	-	-	-	-	-	-	-	-	-	-	-	6	1	-	-	29	9	38
Oth.Pacific	52	24	12	9	11	7	1	-	-	-	2	-	-	-	-	-	-	-	18	3	-	-	96	43	139
Vanuatu	48	27	17	11	7	5	-	-	-	-	-	-	-	-	-	-	-	-	2	-	-	-	74	43	117
Hong Kong	6	5	2	2	13	-	-	-	-	-	-	-	-	-	-	-	-	-	4	3	-	-	25	10	35
Fiji	77	44	102	19	76	25	1	-	-	-	-	-	-	-	-	-	-	-	7	-	-	-	263	88	351
Oth.Asia	361	47	14	1	157	33	-	1	-	-	5	1	-	-	-	-	-	-	59	10	-	-	596	93	689
Netherlands	5	-	2	-	-	-	-	-	-	-	-	-	-	-	-	-	-	-	-	-	-	-	7	-	7
Oth.Europe	45	22	3	2	11	4	-	-	-	-	1	-	-	-	-	-	-	-	21	10	-	-	81	38	119
France	10	2	1	1	3	-	-	-	-	-	-	-	-	-	-	-	-	-	4	-	-	-	18	3	21
Italy	7	4	-	-	2	-	-	-	-	-	-	-	-	-	-	-	-	-	-	-	1	-	9	5	14
Oth.Country	13	1	2	1	2	1	-	-	-	-	-	-	-	-	-	-	-	-	6	2	-	-	23	5	28
Total	1,805	525	243	81	704	149	3	1	-	-	34	2	-	-	-	-	-	-	895	311	1	-	3,685	1,069	4,754
	Percentage																								
Australia	42.8	14.0	0.5	0.1	1.8	0.4	-	-	-	-	0.2	-	-	-	-	-	-	-	29.2	10.8	-	-	74.7	25.3	100.0
PNG	5.0	0.5	1.3	0.5	77.3	12.3	-	-	-	-	0.3	-	-	-	-	-	-	-	2.1	0.8	-	-	85.9	14.1	100.0
US	27.7	6.1	22.1	10.8	8.2	2.6	-	-	-	-	8.7	0.4	-	-	-	-	-	-	9.5	3.9	-	-	76.2	23.8	100.0
NZ	37.2	6.9	2.9	0.0	4.3	1.1	-	-	-	-	-	-	-	-	-	-	-	-	36.5	11.2	-	-	80.9	19.1	100.0
UK	43.1	18.5	1.5	0.0	6.2	3.1	-	-	-	-	-	-	-	-	-	-	-	-	15.4	12.3	-	-	66.2	33.8	100.0
Japan	38.7	2.9	2.2	0.7	37.2	5.1	-	-	-	-	-	-	-	-	-	-	-	-	10.2	2.2	0.7	-	89.1	10.9	100.0
Germany	33.3	20.0	20.0	-	-	-	-	-	-	-	-	-	-	-	-	-	-	-	20.0	6.7	-	-	73.3	26.7	100.0
Canada	39.5	7.9	15.8	13.2	5.3	-	-	-	-	-	-	-	-	-	-	-	-	-	15.8	2.6	-	-	76.3	23.7	100.0
Oth.Pacific	37.4	17.3	8.6	6.5	7.9	5.0	0.7	-	-	-	1.4	-	-	-	-	-	-	-	12.9	2.2	-	-	69.1	30.9	100.0
Vanuatu	41.0	23.1	14.5	9.4	6.0	4.3	-	-	-	-	-	-	-	-	-	-	-	-	1.7	-	-	-	63.2	36.8	100.0
Hong Kong	17.1	14.3	5.7	5.7	37.1	-	-	-	-	-	-	-	-	-	-	-	-	-	11.4	8.6	-	-	71.4	28.6	100.0
Fiji	21.9	12.5	29.1	5.4	21.7	7.1	0.3	-	-	-	-	-	-	-	-	-	-	-	2.0	-	-	-	74.9	25.1	100.0
Oth.Asia	52.4	6.8	2.0	0.1	22.8	4.8	-	0.1	-	-	0.7	0.1	-	-	-	-	-	-	8.6	1.5	-	-	86.5	13.5	100.0
Netherlands	71.4	-	28.6	-	-	-	-	-	-	-	-	-	-	-	-	-	-	-	-	-	-	-	100.0	-	100.0
Oth.Europe	37.8	18.5	2.5	1.7	9.2	3.4	-	-	-	-	0.8	-	-	-	-	-	-	-	17.6	8.4	-	-	68.1	31.9	100.0
France	47.6	9.5	4.8	4.8	14.3	-	-	-	-	-	-	-	-	-	-	-	-	-	19.0	-	-	-	85.7	14.3	100.0
Italy	50.0	28.6	-	-	14.3	-	-	-	-	-	-	-	-	-	-	-	-	-	-	-	7.1	-	64.3	35.7	100.0
Oth.Country	46.4	3.6	7.1	3.6	7.1	3.6	-	-	-	-	-	-	-	-	-	-	-	-	21.4	7.1	-	-	82.1	17.9	100.0
Total	38.0	11.0	5.1	1.7	14.8	3.1	0.1	-	-	-	0.7	-	-	-	-	-	-	18.8	6.5	-	-	77.5	22.5	100.0	

Chart 8: Visitor Arrivals by Carrier by Sex, 1st quarter 2014



Appendix 1

Concepts and Definitions

Persons entering Solomon Islands classify themselves into three (3) categories; returning resident, intending resident, and visitor. The concepts and definitions of the various categories are as follows:

(i) *Returning residents*

- Solomon Islanders and non-Solomon Islanders who have left the country and are returning to continue their residence.
- Non Solomon Islanders includes resident permit holders and Diplomatic officials, and their immediate family members. This may also includes legal or official arrangements that fall out side of the above.

(ii) *Intending residents*

- Non-Solomon Islander who wish to take up residence in Solomon Islands.

(iii) *Visitors*

- Any traveller who is not a Solomon Islander and who purposely spend less time – at most a period of 120 days², in the country and with the intention and purpose of visiting.
- *Tourist*
 - Visitors who further classify themselves stating their visit are purposely for '*holiday and vacation*'. This exclude, tourist arrivals by cruise ships.
 - Wife accompanying husband on business purpose is a private tourist unless also working.
 - *World Tourism Organization WTO definition of Tourism:*
*It comprises the activities of persons travelling to and staying in places outside their usual environment for not more than a year for leisure, business and other purposes not related to the exercise of an activity remunerated from within the place visited*³.

(iv) *Markets*

- *Country of Usual Residence*

² Solomon Islands 1993 Statistical Yearbook.

³ Dimensions of Hospitality, Study guide 1. p17

Appendix 2

Table 9: Intending Resident Arrivals by Country of Residence by Occupation and Sex: 1st Quarter 2014

Country of Usual Residence	Professional and Technical		Administration and Managerial		Clerical & Related Work		Sales Worker		Service Worker		Agriculture Forestry Fishery		Production & Related Work		Other		No Work		Total		
	M	F	M	F	M	F	M	F	M	F	M	F	M	F	M	F	M	F	M	F	All
Australia	28	31	13	8	2	-	-	-	35	8	-	2	1	-	45	53	10	11	134	113	247
PNG	14	4	2	-	1	-	-	-	1	4	-	-	3	-	13	5	12	3	46	16	62
US	7	3	-	-	-	-	-	-	-	1	-	-	-	-	1	1	2	1	10	6	16
NZ	9	1	1	-	-	-	-	-	6	2	-	-	1	-	8	8	1	3	26	14	40
UK	1	-	2	-	-	-	-	-	-	-	-	-	-	-	1	2	-	-	4	2	6
Japan	-	-	1	-	-	-	-	-	-	-	-	-	-	-	12	7	-	-	13	7	20
Germany	-	-	-	-	-	-	-	-	-	-	-	-	-	-	-	-	-	-	-	-	-
Canada	-	-	-	-	-	-	-	-	-	-	-	-	-	-	2	-	-	-	-	2	2
Oth.Pacific	10	7	1	-	-	-	-	-	12	1	-	-	-	-	3	1	2	2	28	11	39
Vanuatu	7	9	-	-	-	-	-	-	1	1	-	-	-	-	1	-	1	-	10	10	20
Hong Kong	-	-	1	-	-	-	-	-	-	-	-	-	-	-	1	-	-	-	2	-	2
Fiji	18	7	9	3	-	1	-	-	-	4	2	-	3	-	19	9	5	12	56	36	92
Oth.Asia	48	17	90	28	2	-	17	3	9	6	23	1	109	-	146	29	52	9	496	93	589
Netherlands	-	-	-	-	-	-	-	-	-	-	-	-	-	-	-	-	-	-	-	-	-
Oth.Europe	3	-	-	1	-	1	-	1	-	-	-	-	1	-	5	2	1	1	11	5	16
France	-	-	-	-	-	-	-	-	-	-	-	-	-	-	3	-	-	-	3	-	3
Italy	-	-	-	-	-	-	-	-	-	-	-	-	-	-	-	-	-	-	-	-	-
Oth.Country	2	-	-	1	-	-	-	-	-	-	-	-	-	-	-	2	-	-	2	3	5
Total	147	79	120	41	5	2	18	3	64	27	25	3	118	-	258	121	86	42	841	318	1,159
	<u>Percentage</u>																				
Australia	11.3	12.6	5.3	3.2	0.8	-	-	-	14.2	3.2	-	0.8	0.4	-	18.2	21.5	4.0	4.5	54.3	45.7	100.0
PNG	22.6	6.5	3.2	-	1.6	-	-	-	1.6	6.5	-	-	4.8	-	21.0	8.1	19.4	4.8	74.2	25.8	100.0
US	43.8	18.8	-	-	-	-	-	-	-	6.3	-	-	-	-	6.3	6.3	12.5	6.3	62.5	37.5	100.0
NZ	22.5	2.5	2.5	-	-	-	-	-	15.0	5.0	-	-	2.5	-	20.0	20.0	2.5	7.5	65.0	35.0	100.0
UK	16.7	-	33.3	-	-	-	-	-	-	-	-	-	-	-	16.7	33.3	-	-	66.7	33.3	100.0
Japan	-	-	5.0	-	-	-	-	-	-	-	-	-	-	-	60.0	35.0	-	-	65.0	35.0	100.0
Germany	-	-	-	-	-	-	-	-	-	-	-	-	-	-	-	-	-	-	-	-	-
Canada	-	-	-	-	-	-	-	-	-	-	-	-	-	-	-	100.0	-	-	-	100.0	100.0
Oth.Pacific	25.6	17.9	2.6	-	-	-	-	-	30.8	2.6	-	-	-	-	7.7	2.6	5.1	5.1	71.8	28.2	100.0
Vanuatu	35.0	45.0	-	-	-	-	-	-	5.0	5.0	-	-	-	-	5.0	-	5.0	-	50.0	50.0	100.0
Hong Kong	-	-	50.0	-	-	-	-	-	-	-	-	-	-	-	50.0	-	-	-	100.0	-	100.0
Fiji	19.6	7.6	9.8	3.3	-	1.1	-	-	-	4.3	2.2	-	3.3	-	20.7	9.8	5.4	13.0	60.9	39.1	100.0
Oth.Asia	8.1	-	-	-	-	-	-	-	-	-	-	-	-	-	-	-	-	-	-	-	-
Netherlands	-	-	-	-	-	-	-	-	-	-	-	-	-	-	-	-	-	-	-	-	-
Oth.Europe	18.8	-	-	6.3	-	6.3	6.3	-	-	-	-	-	6.3	-	31.3	12.5	6.3	6.3	68.8	31.3	100.0
France	-	-	-	-	-	-	-	-	-	-	-	-	-	-	100.0	-	-	-	100.0	-	100.0
Italy	-	-	-	-	-	-	-	-	-	-	-	-	-	-	-	-	-	-	-	-	-
Oth.Country	40.0	-	-	20.0	-	-	-	-	-	-	-	-	-	-	-	40.0	-	-	40.0	60.0	100.0
Total	12.7	6.8	10.4	3.5	0.4	0.2	1.6	0.3	5.5	2.3	2.2	0.3	10.2	-	22.3	10.4	7.4	3.6	72.6	27.4	100.0

Table 10: Intending Resident Arrivals by Country of Residence by Age Groups by Sex: 1st Quarter 2014

Country of Usual Residence	Age-Group																		Total		
	0-14		15-24		25-34		35-44		45-54		55-64		65+		Not Stated		M	F	All		
	M	F	M	F	M	F	M	F	M	F	M	F	M	F							
Australia	8	7	6	2	19	30	28	24	29	22	27	14	4	1	13	13	134	113	247		
PNG	11	5	6	2	7	2	11	5	6	1	-	-	-	-	5	1	46	16	62		
US	1	1	1	1	1	1	-	-	2	1	2	-	1	1	2	1	10	6	16		
NZ	-	1	2	1	3	1	3	3	8	2	6	3	-	-	4	3	26	14	40		
UK	-	-	-	-	1	1	-	-	1	-	2	1	-	-	-	-	4	2	6		
Japan	-	-	-	-	4	2	1	3	1	1	7	1	-	-	-	-	13	7	20		
Germany	-	-	-	-	-	-	-	-	-	-	-	-	-	-	-	-	-	-	-		
Canada	-	-	-	-	-	2	-	-	-	-	-	-	-	-	-	-	-	2	2		
Oth.Pacific	4	3	3	3	6	2	5	1	8	-	1	-	-	-	1	2	28	11	39		
Vanuatu	-	3	4	4	4	2	1	-	1	1	-	-	-	-	-	-	10	10	20		
Hong Kong	-	-	-	-	1	-	-	-	1	-	-	-	-	-	-	-	2	-	2		
Fiji	5	7	6	3	16	10	13	5	4	3	7	2	-	-	5	6	56	36	92		
Oth.Asia	4	4	41	11	99	28	135	23	139	13	58	8	2	-	18	6	496	93	589		
Netherlands	-	-	-	-	-	-	-	-	-	-	-	-	-	-	-	-	-	-	-		
Oth.Europe	-	1	-	1	2	-	2	-	2	2	3	-	1	-	1	1	11	5	16		
France	-	-	1	-	-	-	-	-	-	-	1	-	1	-	-	-	3	-	3		
Italy	-	-	-	-	-	-	-	-	-	-	-	-	-	-	-	-	-	-	-		
Oth.Country	-	-	-	-	1	1	-	1	1	1	-	-	-	-	-	-	2	3	5		
Total	33	32	70	28	164	82	199	65	203	47	114	29	9	2	49	33	841	318	1,159		
	<u>Percentage</u>																				
Australia	3.2	2.8	2.4	0.8	7.7	12.1	11.3	9.7	11.7	8.9	10.9	5.7	1.6	0.4	5.3	5.3	54.3	45.7	100.0		
PNG	17.7	8.1	9.7	3.2	11.3	3.2	17.7	8.1	9.7	1.6	-	-	-	-	8.1	1.6	74.2	25.8	100.0		
US	6.3	6.3	6.3	6.3	6.3	6.3	-	-	12.5	6.3	12.5	-	6.3	6.3	12.5	6.3	62.5	37.5	100.0		
NZ	-	2.5	5.0	2.5	7.5	2.5	7.5	7.5	20.0	5.0	15.0	7.5	-	-	10.0	7.5	65.0	35.0	100.0		
UK	-	-	-	-	16.7	16.7	-	-	16.7	-	33.3	16.7	-	-	-	-	66.7	33.3	100.0		
Japan	-	-	-	-	20.0	10.0	5.0	15.0	5.0	5.0	35.0	5.0	-	-	-	-	65.0	35.0	100.0		
Germany	-	-	-	-	-	-	-	-	-	-	-	-	-	-	-	-	-	-	-		
Canada	-	-	-	-	-	100.0	-	-	-	-	-	-	-	-	-	-	-	100.0	100.0		
Oth.Pacific	10.3	7.7	7.7	7.7	15.4	5.1	12.8	2.6	20.5	-	2.6	-	-	-	2.6	5.1	71.8	28.2	100.0		
Vanuatu	-	15.0	20.0	20.0	20.0	10.0	5.0	-	5.0	5.0	-	-	-	-	-	-	50.0	50.0	100.0		
Hong Kong	-	-	-	-	50.0	-	-	-	50.0	-	-	-	-	-	-	-	100.0	-	100.0		
Fiji	5.4	7.6	6.5	3.3	17.4	10.9	14.1	5.4	4.3	3.3	7.6	2.2	-	-	5.4	6.5	60.9	39.1	100.0		
Oth.Asia	0.7	0.7	7.0	1.9	16.8	4.8	22.9	3.9	23.6	2.2	9.8	1.4	0.3	-	3.1	1.0	84.2	15.8	100.0		
Netherlands	-	-	-	-	-	-	-	-	-	-	-	-	-	-	-	-	-	-	-		
Oth.Europe	-	6.3	-	6.3	12.5	-	12.5	-	12.5	12.5	18.8	-	6.3	-	6.3	6.3	68.8	31.3	100.0		
France	-	-	33.3	-	-	-	-	-	-	-	33.3	-	33.3	-	-	-	100.0	-	100.0		
Italy	-	-	-	-	-	-	-	-	-	-	-	-	-	-	-	-	-	-	-		
Oth.Country	-	-	-	-	20.0	20.0	-	20.0	20.0	20.0	-	-	-	-	-	-	40.0	60.0	100.0		
Total	2.8	2.8	6.0	2.4	14.2	7.1	17.2	5.6	17.5	4.1	9.8	2.5	0.8	0.2	4.2	2.8	72.6	27.4	100.0		

Table 11: Returning Resident Arrivals by Country of Residence by Age Groups by Sex: 1st Quarter 2014

Country of Usual Residence	Age-Group																		
	0-14		15-24		25-34		35-44		45-54		55-64		65+		Not Stated		Total		
	M	F	M	F	M	F	M	F	M	F	M	F	M	F	M	F	M	F	All
Australia	-	-	-	-	-	-	-	-	-	-	-	-	-	-	-	-	-	-	-
PNG	-	-	-	-	-	-	-	-	-	-	-	-	-	-	-	-	-	-	-
US	-	-	-	-	-	-	-	-	-	-	-	-	-	-	-	-	-	-	-
NZ	-	-	-	-	-	-	-	-	-	-	1	-	-	-	-	-	1	-	1
UK	-	-	-	-	-	-	-	-	-	-	-	-	-	-	-	-	-	-	-
Japan	-	-	1	-	-	-	-	1	-	-	-	-	-	-	1	-	2	1	3
Germany	-	-	-	-	-	-	-	-	-	-	-	-	-	-	-	-	-	-	-
Canada	-	-	-	-	-	-	-	-	-	-	-	-	-	-	-	-	-	-	-
Oth.Pacific	-	-	-	-	-	-	-	-	-	-	-	-	-	-	-	-	-	-	-
Vanuatu	-	-	-	-	-	-	-	-	-	-	-	-	-	-	-	-	-	-	-
Hong Kong	-	-	-	-	-	-	-	-	-	-	-	-	-	-	-	-	-	-	-
Fiji	-	-	-	-	-	-	-	-	-	-	-	-	-	-	-	-	-	-	-
Oth.Asia	-	-	-	1	-	1	-	-	-	-	-	-	-	-	-	-	-	2	2
Netherlands	-	-	-	-	-	-	-	-	-	-	-	-	-	-	-	-	-	-	-
Oth.Europe	-	-	-	-	-	-	-	-	-	-	-	-	-	-	-	-	-	-	-
France	-	-	-	-	-	-	-	-	-	-	-	-	-	-	-	-	-	-	-
Italy	-	-	-	-	-	-	-	-	-	-	-	-	-	-	-	-	-	-	-
Oth.Country	-	-	-	-	-	-	-	-	-	-	-	-	-	-	-	-	-	-	-
Solomon Is.	130	127	170	190	410	284	507	286	418	197	264	80	77	19	124	104	2,100	1,287	3,387
Total	130	127	171	191	410	285	507	287	418	197	265	80	77	19	125	104	2,103	1,290	3,393

Country of Usual Residence	Percentage																			
	M	F	M	F	M	F	M	F	M	F	M	F	M	F	M	F	M	F	All	
Australia	-	-	-	-	-	-	-	-	-	-	-	-	-	-	-	-	-	-	-	
PNG	-	-	-	-	-	-	-	-	-	-	-	-	-	-	-	-	-	-	-	
US	-	-	-	-	-	-	-	-	-	-	-	-	-	-	-	-	-	-	-	
NZ	-	-	-	-	-	-	-	-	-	-	100.0	-	-	-	-	-	100.0	-	100.0	
UK	-	-	-	-	-	-	-	-	-	-	-	-	-	-	-	-	-	-	-	
Japan	-	-	33.3	-	-	-	-	33.3	-	-	-	-	-	-	33.3	-	66.7	33.3	100.0	
Germany	-	-	-	-	-	-	-	-	-	-	-	-	-	-	-	-	-	-	-	
Canada	-	-	-	-	-	-	-	-	-	-	-	-	-	-	-	-	-	-	-	
Oth.Pacific	-	-	-	-	-	-	-	-	-	-	-	-	-	-	-	-	-	-	-	
Vanuatu	-	-	-	-	-	-	-	-	-	-	-	-	-	-	-	-	-	-	-	
Hong Kong	-	-	-	-	-	-	-	-	-	-	-	-	-	-	-	-	-	-	-	
Fiji	-	-	-	-	-	-	-	-	-	-	-	-	-	-	-	-	-	-	-	
Oth.Asia	-	-	-	50.0	-	50.0	-	-	-	-	-	-	-	-	-	-	-	100.0	100.0	
Netherlands	-	-	-	-	-	-	-	-	-	-	-	-	-	-	-	-	-	-	-	
Oth.Europe	-	-	-	-	-	-	-	-	-	-	-	-	-	-	-	-	-	-	-	
France	-	-	-	-	-	-	-	-	-	-	-	-	-	-	-	-	-	-	-	
Italy	-	-	-	-	-	-	-	-	-	-	-	-	-	-	-	-	-	-	-	
Oth.Country	-	-	-	-	-	-	-	-	-	-	-	-	-	-	-	-	-	-	-	
Solomon Is.	3.8	3.7	5.0	5.6	12.1	8.4	15.0	8.4	12.3	5.8	7.8	2.4	2.3	0.6	3.7	3.1	62.0	38.0	100.0	
Total	3.8	3.7	5.0	5.6	12.1	8.4	14.9	8.5	12.3	5.8	7.8	2.4	2.3	0.6	3.7	3.1	62.0	38.0	100.0	

Table 12: Returning Resident Arrivals by Country of Residence by Occupation and Sex: 1st Quarter 2014

Country of Usual Residence	Professional and Technical		Administration and Managerial		Clerical & Related Work		Sales Worker		Service Worker		Agriculture Forestry Fishery		Production & Related Work		Other		No Work		Total		
	M	F	M	F	M	F	M	F	M	F	M	F	M	F	M	F	M	F	M	F	All
	Australia	-	-	-	-	-	-	-	-	-	-	-	-	-	-	-	-	-	-	-	-
PNG	-	-	-	-	-	-	-	-	-	-	-	-	-	-	-	-	-	-	-	-	-
US	-	-	-	-	-	-	-	-	-	-	-	-	-	-	-	-	-	-	-	-	-
NZ	-	-	-	-	-	-	-	-	-	-	-	-	-	-	1	-	-	-	1	-	1
UK	-	-	-	-	-	-	-	-	-	-	-	-	-	-	-	-	-	-	-	-	-
Japan	-	-	-	1	-	-	-	-	-	-	-	-	-	-	1	-	1	-	2	1	3
Germany	-	-	-	-	-	-	-	-	-	-	-	-	-	-	-	-	-	-	-	-	-
Canada	-	-	-	-	-	-	-	-	-	-	-	-	-	-	-	-	-	-	-	-	-
Oth.Pacific	-	-	-	-	-	-	-	-	-	-	-	-	-	-	-	-	-	-	-	-	-
Vanuatu	-	-	-	-	-	-	-	-	-	-	-	-	-	-	-	-	-	-	-	-	-
Hong Kong	-	-	-	-	-	-	-	-	-	-	-	-	-	-	-	-	-	-	-	-	-
Fiji	-	-	-	-	-	-	-	-	-	-	-	-	-	-	-	-	-	-	-	-	-
Oth.Asia	-	-	-	1	-	-	-	-	-	-	-	-	-	-	-	-	-	1	-	2	2
Netherlands	-	-	-	-	-	-	-	-	-	-	-	-	-	-	-	-	-	-	-	-	-
Oth.Europe	-	-	-	-	-	-	-	-	-	-	-	-	-	-	-	-	-	-	-	-	-
France	-	-	-	-	-	-	-	-	-	-	-	-	-	-	-	-	-	-	-	-	-
Italy	-	-	-	-	-	-	-	-	-	-	-	-	-	-	-	-	-	-	-	-	-
Oth.Country	-	-	-	-	-	-	-	-	-	-	-	-	-	-	-	-	-	-	-	-	-
Solomon Is.	717	452	310	115	26	24	50	6	30	137	14	4	65	3	719	397	169	149	2,100	1,287	3,387
Total	717	452	310	117	26	24	50	6	30	137	14	4	65	3	721	397	170	150	2,103	1,290	3,393
Percentage																					
Australia	-	-	-	-	-	-	-	-	-	-	-	-	-	-	-	-	-	-	-	-	-
PNG	-	-	-	-	-	-	-	-	-	-	-	-	-	-	-	-	-	-	-	-	-
US	-	-	-	-	-	-	-	-	-	-	-	-	-	-	-	-	-	-	-	-	-
NZ	-	-	-	-	-	-	-	-	-	-	-	-	-	-	100.0	-	-	-	100.0	-	100.0
UK	-	-	-	-	-	-	-	-	-	-	-	-	-	-	-	-	-	-	-	-	-
Japan	-	-	-	33.3	-	-	-	-	-	-	-	-	-	-	33.3	-	33.3	-	66.7	33.3	100.0
Germany	-	-	-	-	-	-	-	-	-	-	-	-	-	-	-	-	-	-	-	-	-
Canada	-	-	-	-	-	-	-	-	-	-	-	-	-	-	-	-	-	-	-	-	-
Oth.Pacific	-	-	-	-	-	-	-	-	-	-	-	-	-	-	-	-	-	-	-	-	-
Vanuatu	-	-	-	-	-	-	-	-	-	-	-	-	-	-	-	-	-	-	-	-	-
Hong Kong	-	-	-	-	-	-	-	-	-	-	-	-	-	-	-	-	-	-	-	-	-
Fiji	-	-	-	-	-	-	-	-	-	-	-	-	-	-	-	-	-	-	-	-	-
Oth.Asia	-	-	-	50.0	-	-	-	-	-	-	-	-	-	-	-	-	-	50.0	-	100.0	100.0
Netherlands	-	-	-	-	-	-	-	-	-	-	-	-	-	-	-	-	-	-	-	-	-
Oth.Europe	-	-	-	-	-	-	-	-	-	-	-	-	-	-	-	-	-	-	-	-	-
France	-	-	-	-	-	-	-	-	-	-	-	-	-	-	-	-	-	-	-	-	-
Italy	-	-	-	-	-	-	-	-	-	-	-	-	-	-	-	-	-	-	-	-	-
Oth.Country	-	-	-	-	-	-	-	-	-	-	-	-	-	-	-	-	-	-	-	-	-
Solomon Is.	34.7	18.4	5.1	1.8	0.6	0.5	0.9	0.2	1.0	3.5	0.7	0.2	1.5	0.2	16.1	8.1	3.1	3.6	63.6	36.4	100.0
Total	34.7	18.5	5.1	1.8	0.5	0.5	0.9	0.2	1.0	3.5	0.7	0.2	1.5	0.2	16.1	8.1	3.1	3.6	63.5	36.5	100.0