



Solomon Islands Government

Statistical Bulletin: No: 01/2012

VISITOR STATISTICS

(Third Quarter 2011)

Solomon Islands Statistics Office

Ministry of Finance

Honiara

TABLE OF CONTENTS

Introduction.....	3
COMMENTARY OF RESULTS	5
<i>International Arrivals</i>	5
<i>Arrivals by Country of Residence</i>	5
<i>Visitor by Month</i>	5
<i>Tourists</i>	5
<i>Visitors by Purpose of Visit</i>	5
<i>Visitor by Age Group</i>	5
<i>Visitor by Occupation:</i>	5
<i>Visitor by Carrier</i>	5
Charts	
<hr/>	
Chart 1: Arrivals by Category, 3 rd Quarter 2011.....	6
Chart 2: Visitor Arrivals by Country of Residence by quarter: 3 rd Quarter 2011.....	7
Chart 3: Visitor Arrivals by Month, 2007 to 3 rd Quarter 2011	8
Chart 4: Tourist Arrivals by Country of Residence, 3 rd Quarter 2011	9
Chart 5: Visitor Arrivals by Country of Residence by Purpose of Visit, 3 rd Quarter 2011.....	10
Chart 6: Visitor Arrivals by Age group category by sex, 3 rd quarter 2011.....	11
Chart 7: Visitor Arrivals by Occupation by sex, 3 rd quarter 2011.....	12
Chart 8: Visitor Arrivals by Carrier by sex, 3 rd quarter 2011.....	13
Tables	
Table 1: Total Arrivals Classified by Purpose of Travel by Sex by Year by Quarter: 3 rd Quarter 2011.....	6
Table 2: Visitors Arrivals by Country of Residence by Year by Quarter: 3 rd Quarter 2011	7
Table 3: Visitors Arrivals by Month: 2006 to 2 nd Quarter 2011	8
Table 4: Visitors Classified as Tourists by Country of Residence by Year, Quarter and Average Length..... of Stay: 2008 to 3 rd Quarter 2011.....	9
Table 5: Visitor Arrivals by Country of Residence by Purpose of Visit by sex: 3 rd Quarter 2011.....	10
Table 6: Visitors Arrivals by Country of Residence by Age Groups by sex: 3 rd Quarter 2011	11
Table 7: Visitors Arrivals by Country of Residence by Occupation and Sex: 3 rd Quarter 2011	12
Table 8: Visitors Arrivals by Country of Residence by Carrier By Sex: 3 rd Quarter 2011.....	13
Appendix 1	14
<i>Concepts and Definitions</i>	14
Appendix 2.....	15
Table 9: Intending Resident Arrivals by Country of residence by Occupation and sex: 3 rd Quarter 2011	15
Table 10: Intending Resident Arrivals by country of Residence by Age Groups by Sex: 3 rd Quarter 2011	16
Table 11: Returning Resident Arrivals by country of Residence by Occupation and sex: 3 rd Quarter 2011	17
Table 12: Returning Resident Arrivals by country of Residence by Age Groups and sex: 3 rd Quarter 2011	18

Introduction

This quarterly bulletin is produced by the National Statistics Office NSO in the Ministry of Finance and Treasury. It provides information on international arrivals comprised of the returning resident, intending resident, and visitor. The explanation of these categories is provided in Appendix 1 of the bulletin.

Visitor category comprised the bigger share of the bulletin, (portrayed in tables 1 to 8); compared to the returning and intending resident category portrayed in Tables 1, and 9 to 12. The bulletin includes twelve tables and eight charts stretched over cross-field tabulation, preferably to meet information need of local, regional, and international researchers.

The information captured through a self fill Disembarkation form that was completed by all disembarking passengers. The forms were collected by Immigration officials at international check-in counters on arrival. The coverage of the bulletin is complete.

Sheer acknowledgement is owed to the Immigration Department for their continuous support of this bulletin, by providing an office space and permitting the statistics office to input completed forms. With the official arrangement in-placed between the Statistics and Immigration departments this bulletin is possible.

The inclusion of four new tables 9 to 12 in Appendix 2 of the bulletin anticipates to complete the distribution portrait of Intending and Returning resident. The distribution is by age groups, occupation and by country of usual residence.

Data limitations, highlighted in the previous bulletin still remain, though some have substantially improved but noted again for ease of reference as follows:-

- Data entry duplication by the Immigration and Statistics departments was a long standing issue. Discussion of the issues had been made by the two departments, though resolution has been recognized, this was yet to be put in place.
- Timeliness of visitor statistics has improved but the bulletin may be delayed by the production process.
- The information contained in the bulletin is based on information captured from the data source by the SINSO.
- The monetary value of the industry is not available and thus not possible in this bulletin. The concepts and definitions of the arrival categories were included in Appendix 1. The symbols that are likely to be used are:

-	zero if representing a value
-	negative change if representing a percentage change
+	positive change if representing a percentage change
p	preliminary figure, subject to revision
r	revised
e	estimate
n/a	not available

For more information contact the Statistics Office, Department of Finance and Treasury:

TELEPHONE : (677) 27835

FACSMILE : (677) 23775

E-MAIL : STATS-management@mof.gov.sb

: STATS-SocialDemography@mof.gov.sb

WEBSITE : **<http://www.spc.int/prism/country/sb/stats>**

Contact persons: 1. Mrs. Irene KALAUMA, Principal Statistician
 2. Mrs. Anterlyn TUZAKANA, Senior Statistician

COMMENTARY OF RESULTS

International Arrivals

Total Arrivals for the third quarter of 2011 was 10,828. This is an increase of 9.7% compared to the previous quarter (2nd Quarter 2011). Compared to the same quarter last year, it showed an increase of 4.9%.

Arrivals classified by the category for the third quarter of 2011 showed that returning resident comprise of 31% while intending resident 11% and visitor 58%.

Visitor arrivals for the third quarter showed an increase of 13.4% to 6,244 compared to the second quarter 2011 figure of 5,505. Compared to the same quarter last year it showed a decline of 0.3%. Table 1 showed, visitor and returning resident categories comprised the larger proportion of all arrivals while the intending resident represents the lesser share during the quarter. Chart 1, gives a clear picture of all the categories.

Visitor by Country of Residence

Arrivals by country of residence for second quarter showed that Australians (48.7%) are frequent travellers to Solomon Islands followed by Papua New Guinea (9.4%), Other Asia (9%), New Zealand (7.7%), USA (5.9%) and Fiji (4.6%).

Visitor by Month

Visitors by monthly arrivals for third quarter showed that July has the highest number of arrivals of 2,185 persons. This was followed by the month of September which recorded a total of 2,159 persons and August the least with 1,900 persons.

Tourists

Tourist¹ arrivals for the third quarter of the year totalled to 1,881 persons and they spent an average of 16 days in the country. The highest number of tourists recorded for the quarter comes from Australia (55%) and staying in the country for an average of 15 days. This was followed by USA (10%), Other Asia (7.5%), NZ (5.4%) and Japan (5.1%).

Visitor by Purpose of Visit

Distribution of visitors by purpose of visit confirmed Business & conference (35%) as most popular during the quarter. This was followed by Holiday & Vocation (28.8%), Other (23.6%), Visit friends & relatives (11.1%) and Transit & stopover the least by 1.2%.

Visitor by Age Group

Visitor Arrivals by broad age groups show that 78.8% of arrivals were in the 25years to 64years age range. The younger and the older age brackets represent 17.8% while the remaining 3.4% represents arrivals who did not state their age. Male represent 72.4% of the arrival and female 27.6%. (Refer to Chart 6)

Visitor by Occupation

Visitor by occupational category revealed that Professional & Technical (34.8%) was the main occupation during the quarter. This is followed by Other (32.7%), Administration and managerial (10.7%), No work (7.0%), Service worker (6.8%), and Production Related Work (3.7%). Table 7 further revealed that Australia not only dominated the Arrivals in terms of markets but also dominated most of the categories of occupations during the quarter. Refer to Table 7 for further analysis.

Visitor by Carrier

The most popular carriers during the quarter were Solomon Airlines (46%) and Pacific Blue (23%). These were followed by Air Niugini (20%) and Air Pacific (9%).

¹ Refer to Appendix 1 for the definition

Table 1: Total Arrivals Classified by Purpose of Travel by Sex, by Year by Quarter: 3rd Quarter 2011

Year / Quarter	Returning Resident						Intending Resident			Visitor			Total			
	Solomon Islander		Non-Solomon Islander			All	M	F	T	M	F	T	M	F	All	
	M	F	T	M	F											T
2006 3 rd	1,094	557	1,651	58	8	66	1,717	481	114	595	1,705	733	2,438	3,338	1,412	4,750
4 th	2,699	1,255	3,954	2	2	4	3,958	659	165	824	2,234	907	3,141	5,594	2,329	7,923
2007 1 st	1,528	901	2,429	5	-	5	2,434	740	206	946	2,144	673	2,817	4,417	1,780	6,197
2 nd	1,798	913	2,711	102	31	133	2,844	696	195	891	2,817	1,037	3,854	5,413	2,176	7,589
3 rd	1,826	929	2,755	59	12	71	2,826	487	172	659	2,195	1,225	3,420	4,567	2,338	6,905
4 th	2,107	1,095	3,202	486	235	721	3,923	589	153	742	2,525	1,132	3,657	5,707	2,615	8,322
2008 1 st	1,537	938	2,475	4	2	6	2,481	537	174	711	2,094	879	2,973	4,172	1,993	6,165
2 nd	2,492	1,268	3,760	3	1	4	3,764	312	87	399	2,857	1,344	4,201	5,664	2,700	8,364
3 rd	1,593	952	2,545	761	437	1,198	3,743	605	155	760	3,138	1,480	4,618	6,097	3,024	9,121
4 th	2,507	1,366	3,873	969	453	1,422	5,295	396	125	521	3,063	1,409	4,472	6,935	3,353	10,288
2009 1 st	1,173	760	1,933	677	436	1,113	3,046	659	315	974	3,015	1,258	4,273	5,524	2,769	8,293
2 nd	1,427	728	2,155	471	238	709	2,864	611	244	855	3,242	1,374	4,616	5,751	2,584	8,335
3 rd	1,182	709	1,891	425	220	645	2,536	786	355	1,141	3,263	1,519	4,782	5,656	2,803	8,459
4 th	2,145	1,152	3,297	393	197	590	3,887	722	282	1,004	3,177	1,412	4,589	6,437	3,043	9,480
2010 1 st	1,045	695	1,740	550	342	892	2,632	808	380	1,188	3,115	1,095	4,210	5,518	2,512	8,030
2 nd	1,337	707	2,044	494	272	766	2,810	808	307	1,115	3,370	1,384	4,754	6,009	2,670	8,679
3 rd	1,421	730	2,151	485	274	759	2,910	835	316	1,151	4,494	1,768	6,262	7,235	3,088	10,323
4 th	2,783	1,550	4,333	13	4	17	4,350	848	284	1,132	3,766	1,529	5,295	7,410	3,367	10,777
2011 1 st	1,187	724	1,911	694	332	1,026	2,937	1,058	362	1,420	3,972	1,147	5,119	6,911	2,565	9,476
2 nd	1,601	880	2,481	615	292	907	3,388	716	258	974	4,071	1,434	5,505	7,003	2,864	9,867
3 rd	1,716	739	2,455	642	282	924	3,379	930	275	1,205	4,523	1,721	6,244	7,811	3,017	10,828
Percentage change																
08 th -09 ^{1st}	-53.2	-44.4	-50.1	-30.1	-3.8	-21.7	-42.5	66.4	152.0	86.9	-1.6	-10.7	-4.4	-20.3	-17.4	-19.4
09 ^{1st} -09 ^{2nd}	21.7	-4.2	11.5	-30.4	-45.4	-36.3	-6.0	-7.3	-22.5	-12.2	7.5	9.2	8.0	4.1	-6.7	0.5
08 ^{2nd} -09 ^{2nd}	-42.7	-42.6	-42.7	15600.0	23700.0	17625.0	-23.9	95.8	180.5	114.3	13.5	2.2	9.9	1.5	-4.3	-0.3
09 ^{2nd} -09 ^{3rd}	-17.2	-2.6	-12.3	-9.8	-7.6	-9.0	-11.5	28.6	45.5	33.5	0.6	10.6	3.6	-1.7	8.5	1.5
08 ^{3rd} -09 ^{3rd}	-25.8	-25.5	-25.7	-44.2	-49.7	-46.2	-32.2	29.9	129.0	50.1	4.0	2.6	3.6	-7.2	-7.3	-7.3
09 ^{3rd} -09 ^{4th}	81.5	62.5	74.4	-7.5	-10.5	-8.5	53.3	-8.1	-20.6	-12.0	-2.6	-7.0	-4.0	13.8	8.6	12.1
08 ^{4th} -09 ^{4th}	-14.4	-15.7	-14.9	-59.4	-56.5	-58.5	-26.6	82.3	125.6	92.7	3.7	0.2	2.6	-7.2	-9.2	-7.9
09 ^{4th} -10 ^{1st}	-51.3	-39.7	-47.2	39.9	73.6	51.2	-32.3	11.9	34.8	18.3	-2.0	-22.5	-8.3	-14.3	-17.4	-15.3
09 ^{1st} -10 ^{1st}	-10.9	-8.6	-10.0	-18.8	-21.6	-19.9	-13.6	22.6	20.6	22.0	3.3	-13.0	-1.5	-0.1	-9.3	-3.2
10 ^{1st} -10 ^{2nd}	27.9	1.7	17.5	-10.2	-20.5	-14.1	6.8	0.0	-19.2	-6.1	8.2	26.4	12.9	8.9	6.3	8.1
09 ^{2nd} -10 ^{2nd}	-6.3	-2.9	-5.2	4.9	14.3	8.0	-1.9	32.2	25.8	30.4	3.9	0.7	3.0	4.5	3.3	4.1
10 ^{2nd} -10 ^{3rd}	6.3	3.3	5.2	-1.8	0.7	-0.9	3.6	3.3	2.9	3.2	33.4	27.7	31.7	20.4	15.7	18.9
09 ^{3rd} -10 ^{3rd}	20.2	3.0	13.7	14.1	24.5	17.7	14.7	6.2	-11.0	0.9	37.7	16.4	30.9	27.9	10.2	22.0
09 ^{4th} -10 ^{4th}	29.7	34.5	31.4	-96.7	-98.0	-97.1	11.9	17.5	0.7	12.7	18.5	8.3	15.4	15.1	10.6	13.7
10 ^{1st} -11 ^{1st}	13.6	4.2	9.8	26.2	-2.9	15.0	11.6	30.9	-4.7	19.5	27.5	4.7	21.6	25.2	2.1	18.0
10 ^{4th} -11 ^{1st}	-57.3	-53.3	-55.9	5238.5	8200.0	5935.3	-32.5	24.8	27.5	25.4	5.5	-25.0	-3.3	-6.7	-23.8	-12.1
11 ^{1st} -11 ^{2nd}	34.9	21.5	29.8	-11.4	-12.0	-11.6	15.4	-32.3	-28.7	-31.4	2.5	25.0	7.5	1.3	11.7	4.1
11 ^{2nd} -11 ^{3rd}	7.2	-16.0	-1.0	4.4	-3.4	1.9	-0.3	29.9	6.6	23.7	11.1	20.0	13.4	11.5	5.3	9.7

Chart 1: Arrivals by category 3rd quarter 2011

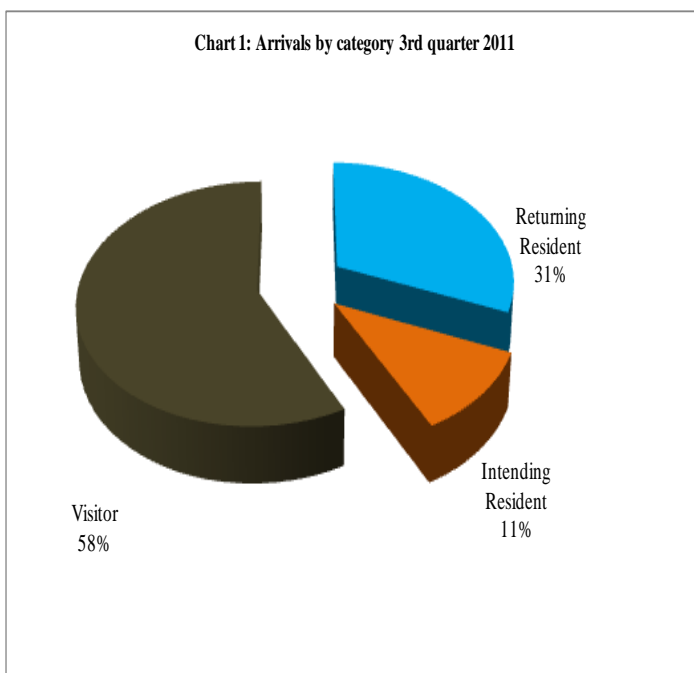


Table 1.1 Total Arrivals by Year 1998 - 2011

Year	Returning	Intending Resident	Visitor	Total		
	T	T	T	M	F	All
1998	8,987	2,430	15,802	18,044	9,175	27,219
1999#	1,498	460	2,474	3,059	1,373	4,432
2000	5,546	1,019	7,671	10,005	4,231	14,236
2001*	3,108	402	4,806	5,815	2,501	8,316
2002	No data from source					
2003	7,139	514	6,595	9,339	4,909	14,248
2004+	4,415	293	5,558	7,100	3,166	10,266
2005@	7,168	825	9,400	12,275	5,118	17,393
2006	10,470	2,698	11,482	17,514	7,136	24,650
2007	12,027	3,238	13,748	20,104	8,909	29,013
2008	15,283	2,391	16,264	22,868	11,070	33,938
2009	12,333	3,974	18,260	23,368	11,199	34,567
2010	12,702	4,586	20,521	26,172	11,637	37,809
2011	9,704	3,599	16,868	21,725	8,446	30,171

NB: '# Only Qtr 1; '*qtr 4 not available; '+' qtr 1 and 2 not available; '@qtr1 not available

Table 3: Visitor Arrivals by Month: 2006 – 2nd Quarter 2011

Month	2006	2007	2008	2009	2010	2011
January	952	546	889	1,602	1,235	1600
February	838	1,020	1,282	1,422	1,209	1658
March	972	1,251	802	1,249	1,766	1861
April	994	1,452	1,388	1,499	1,820	1736
May	858	1,137	1,261	1,393	1,137	1760
June	1,289	1,265	1,552	1,724	1,797	2009
July	865	822	1,692	1,603	2,264	2185
August	892	1,299	1,469	1,520	1,845	1900
September	681	1,299	1,457	1,659	2,153	2159
October	942	1,260	1,399	1,709	1,813	
November	1,118	1,246	1,545	1,475	1,624	
December	1,081	1,151	1,528	1,405	1,858	
Total	11,482	13,748	16,264	18,260	22,531	16,868
Percentage						
January	8.3	4.0	5.5	8.8	5.5	9.5
February	7.3	7.4	7.9	7.8	5.4	9.8
March	8.5	9.1	4.9	6.8	7.8	11.0
April	8.7	10.6	8.5	8.2	8.1	10.3
May	7.5	8.3	7.8	7.6	5.0	10.4
June	11.2	9.2	9.5	9.4	8.0	11.9
July	7.5	6.0	10.4	8.8	10.0	13.0
August	7.8	9.4	9.0	8.3	8.2	11.3
September	5.9	9.4	9.0	9.1	9.6	12.8
October	8.2	9.2	8.6	9.4	8.0	
November	9.7	9.1	9.5	8.1	7.2	
December	9.4	8.4	9.4	7.7	8.2	
Total	100	100.0	100.0	100.0	100.0	100.0

Chart 3: Visitors Arrival by month, 2007 - 3rd quarter 2011

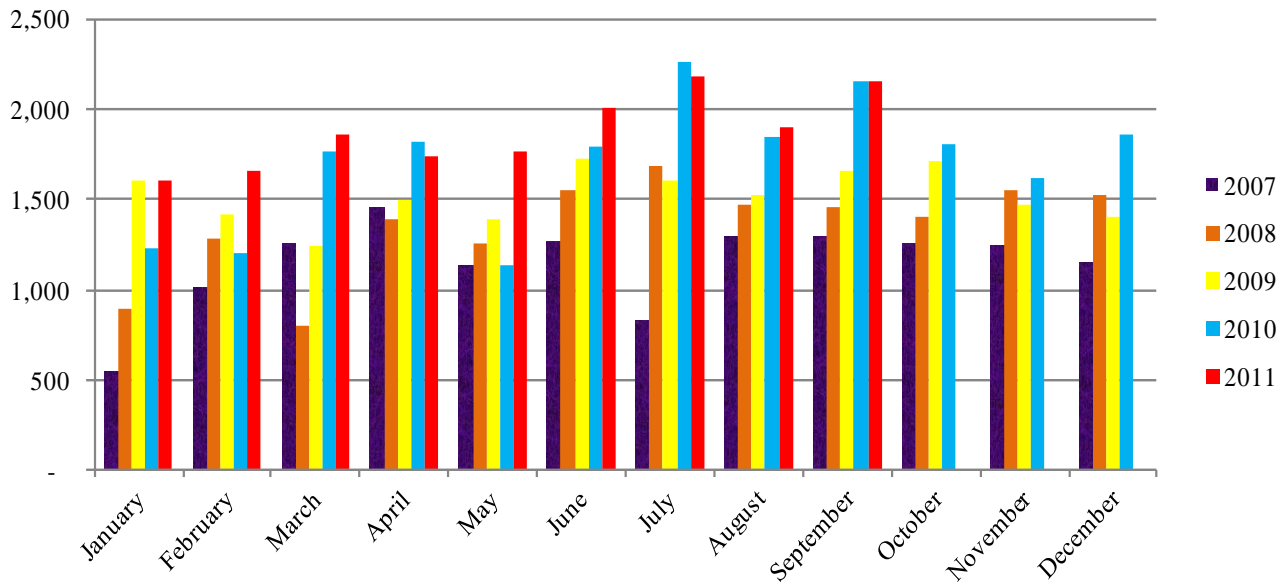


Table 4: Visitors, classified as tourists by Country of residence by year, quarter and average length of stay: 4th Quarter 2008 – 3rd Quarter 2011

Country of Usual Residence	2008		2009								2010								2011					
	Quarter 4		Quarter 1		Quarter 2		Quarter 3		Quarter 4		Quarter 1		Quarter 2		Quarter 3		Quarter 4		Quarter 1		Quarter 2		Quarter 3	
	tourist	day	tourist	day	tourist	day	tourist	day	tourist	day	tourist	day	tourist	day	tourist	day	tourist	day	tourist	day	tourist	day	tourist	day
Australia	746	15	546	12	768	13	878	14	724	15	558	13	756	11	1,010	12	854	15	611	14	872	13	1,034	15
PNG	54	21	24	13	36	11	35	13	62	33	46	22	41	11	36	15	60	27	34	13	53	15	72	16
US	235	14	75	10	95	16	163	13	141	14	46	16	122	11	166	12	114	13	91	11	104	16	191	13
NZ	107	22	33	14	41	14	99	17	41	23	17	18	62	14	140	14	65	19	29	23	56	15	102	17
UK	67	13	44	16	38	27	52	28	37	25	24	18	48	19	72	23	54	13	26	19	49	25	42	23
Japan	111	8	61	7	56	7	84	11	286	5	45	8	23	5	56	12	94	6	45	12	24	10	95	15
Germany	30	17	21	26	6	9	15	14	18	27	17	16	23	13	13	17	13	14	15	35	12	13	24	17
Canada	33	14	5	25	6	24	9	29	11	13	14	18	8	33	7	12	11	14	27	17	8	23	14	14
Oth.Pacific	58	13	68	10	17	8	84	14	29	18	22	16	8	7	16	12	23	27	19	15	14	12	15	16
Vanuatu	33	28	1	10	7	13	-	-	-	10	4	9	9	15	10	18	12	14	20	15	13	14	20	17
Hong Kong	15	7	0	-	6	12	-	-	-	20	3	15	-	-	8	10	2	3	5	5	7	8	11	12
Fiji	22	22	6	16	13	7	8	7	19	-	9	23	10	25	15	31	21	29	15	13	23	18	26	20
Oth.Asia	108	19	61	17	88	24	78	22	61	30	78	20	106	19	126	13	107	23	127	20	103	25	142	22
Netherlands	16	12	4	20	6	44	6	18	10	15	5	8	4	15	6	15	5	7	6	34	5	18	9	20
Oth.Europe	70	13	74	11	18	22	50	12	53	19	48	22	33	17	72	16	34	16	35	18	32	14	37	18
France	38	12	14	11	2	17	11	19	16	14	6	12	13	23	9	16	8	21	4	28	5	17	15	20
Italy	25	5	5	28	2	12	19	14	15	43	2	12	1	8	11	17	5	52	5	22	5	10	6	18
Oth.Country	39	10	5	5	12	20	23	12	12	11	21	22	15	9	24	14	14	18	23	12	14	21	26	16
Total	1,807	15	1,047	13	1,217	15	1,614	15	1,550	15	965	15	1,282	12	1,797	13	1,496	18	1,137	16	1,399	15	1,881	16

Chart 4: Tourist Arrivals by Country of Residence, 3rd Quarter 2011

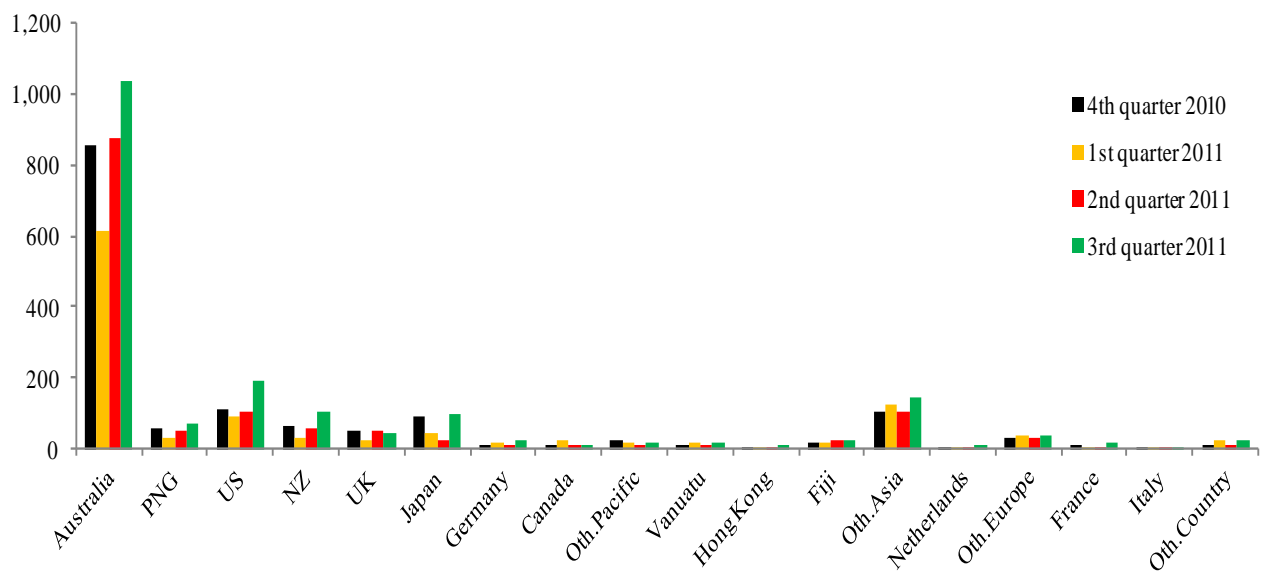


Table 5: Visitor Arrivals by Country of Residence by Purpose of Visit by sex: 3rd Quarter 2011

Country of Usual Residence	Business & Conference			Holiday & Vocation			Transit & Stopover			Visit friends/Relatives			Other			Total		
	M	F	T	M	F	T	M	F	T	M	F	T	M	F	T	M	F	All
Australia	735	190	925	624	400	1024	9	1	10	222	148	370	555	158	713	2,145	897	3,042
PNG	178	46	224	34	17	51	18	3	21	41	26	67	208	18	226	479	110	589
US	87	17	104	113	77	190	-	1	1	18	6	24	37	12	49	255	113	368
NZ	154	53	207	56	43	99	2	1	3	29	22	51	84	35	119	325	154	479
UK	18	5	23	25	15	40	2	-	2	6	11	17	15	4	19	66	35	101
Japan	80	3	83	60	25	85	5	5	10	14	6	20	23	8	31	182	47	229
Germany	7	1	8	16	8	24	-	-	-	1	2	3	3	-	3	27	11	38
Canada	9	9	18	7	7	14	-	-	-	6	8	14	8	1	9	30	25	55
Oth.Pacific	71	41	112	8	6	14	1	-	1	6	5	11	21	11	32	107	63	170
Vanuatu	38	10	48	5	2	7	10	3	13	13	5	18	8	6	14	74	26	100
Hong Kong	6	1	7	7	4	11	-	-	-	1	-	1	2	1	3	16	6	22
Fiji	107	46	153	12	9	21	2	3	5	13	13	26	68	12	80	202	83	285
Oth.Asia	179	33	212	114	21	135	5	2	7	39	14	53	137	18	155	474	88	562
Netherlands	6	-	6	5	3	8	1	-	1	-	2	2	2	1	3	14	6	20
Oth.Europe	14	6	20	25	9	34	1	2	3	3	-	3	2	1	3	45	18	63
France	3	3	6	10	5	15	-	-	-	-	-	-	1	-	1	14	8	22
Italy	3	1	4	4	2	6	-	-	-	7	2	9	-	1	1	14	6	20
Oth.Country	26	10	36	17	8	25	-	1	1	4	-	4	7	6	13	54	25	79
Total	1,721	475	2,196	1,142	661	1,803	56	22	78	423	270	693	1,181	293	1,474	4,523	1,721	6,244
Percentage																		
Australia	24.2	6.2	30.4	20.5	13.1	33.7	0.3	-	0.3	7.3	4.9	12.2	18.2	5.2	23.4	70.5	29.5	100.0
PNG	30.2	7.8	38.0	5.8	2.9	8.7	3.1	0.5	3.6	7.0	4.4	11.4	35.3	3.1	38.4	81.3	18.7	100.0
US	23.6	4.6	28.3	30.7	20.9	51.6	-	0.3	0.3	4.9	1.6	6.5	10.1	3.3	13.3	69.3	30.7	100.0
NZ	32.2	11.1	43.2	11.7	9.0	20.7	0.4	0.2	0.6	6.1	4.6	10.6	17.5	7.3	24.8	67.8	32.2	100.0
UK	17.8	5.0	22.8	24.8	14.9	39.6	2.0	-	2.0	5.9	10.9	16.8	14.9	4.0	18.8	65.3	34.7	100.0
Japan	34.9	1.3	36.2	26.2	10.9	37.1	2.2	2.2	4.4	6.1	2.6	8.7	10.0	3.5	13.5	79.5	20.5	100.0
Germany	18.4	2.6	21.1	42.1	21.1	63.2	-	-	-	2.6	5.3	7.9	7.9	-	7.9	71.1	28.9	100.0
Canada	16.4	16.4	32.7	12.7	12.7	25.5	-	-	-	10.9	14.5	25.5	14.5	1.8	16.4	54.5	45.5	100.0
Oth.Pacific	41.8	24.1	65.9	4.7	3.5	8.2	0.6	-	0.6	3.5	2.9	6.5	12.4	6.5	18.8	62.9	37.1	100.0
Vanuatu	38.0	10.0	48.0	5.0	2.0	7.0	10.0	3.0	13.0	13.0	5.0	18.0	8.0	6.0	14.0	74.0	26.0	100.0
Hong Kong	27.3	4.5	31.8	31.8	18.2	50.0	-	-	-	4.5	-	4.5	9.1	4.5	13.6	72.7	27.3	100.0
Fiji	37.5	16.1	53.7	4.2	3.2	7.4	0.7	1.1	1.8	4.6	4.6	9.1	23.9	4.2	28.1	70.9	29.1	100.0
Oth.Asia	31.9	5.9	37.7	20.3	3.7	24.0	0.9	0.4	1.2	6.9	2.5	9.4	24.4	3.2	27.6	84.3	15.7	100.0
Netherlands	30.0	-	30.0	25.0	15.0	40.0	5.0	-	5.0	-	10.0	10.0	10.0	5.0	15.0	70.0	30.0	100.0
Oth.Europe	22.2	9.5	31.7	39.7	14.3	54.0	1.6	3.2	4.8	4.8	-	4.8	3.2	1.6	4.8	71.4	28.6	100.0
France	13.6	13.6	27.3	45.5	22.7	68.2	-	-	-	-	-	-	4.5	-	4.5	63.6	36.4	100.0
Italy	15.0	5.0	20.0	20.0	10.0	30.0	-	-	-	35.0	10.0	45.0	-	5.0	5.0	70.0	30.0	100.0
Oth.Country	32.9	12.7	45.6	21.5	10.1	31.6	-	1.3	1.3	5.1	-	5.1	8.9	7.6	16.5	68.4	31.6	100.0
Total	27.6	7.6	35.2	18.3	10.6	28.9	0.9	0.4	1.2	6.8	4.3	11.1	18.9	4.7	23.6	72.4	27.6	100.0

Chart 5: Visitors Arrival by Country of Residence by Purpose of Visit, 3rd quarter 2011

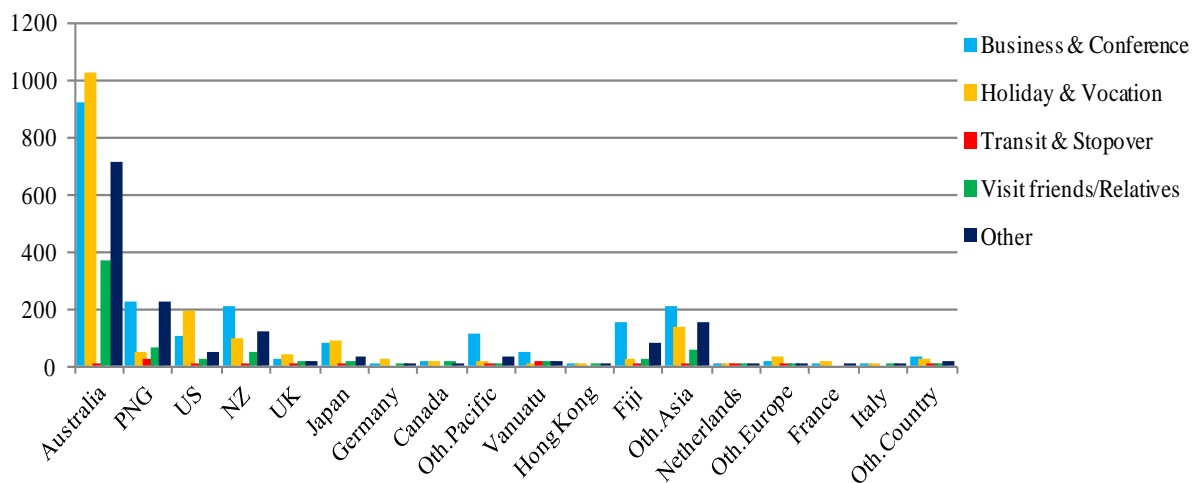


Table 6: Visitor Arrivals by Country of Residence by Age Groups by Sex: 3rd Quarter 2011

Country of Usual Residence	Age-Group																		Total	
	0-14		15-24		25-34		35-44		45-54		55-64		65+		Not Stated		M	F		All
	M	F	M	F	M	F	M	F	M	F	M	F	M	F						
Australia	86	61	184	137	332	156	452	141	467	178	408	146	141	42	75	36	2,145	897	3,042	
PNG	7	7	13	8	126	20	139	32	123	26	47	10	7	1	17	6	479	110	589	
US	2	1	19	8	18	13	41	10	62	27	62	31	37	12	14	11	255	113	368	
NZ	7	2	19	21	47	28	57	29	86	29	74	24	24	12	11	9	325	154	479	
UK	1	3	17	9	6	7	8	2	18	6	14	5	-	1	2	2	66	35	101	
Japan	1	1	13	9	29	12	41	9	41	-	35	2	19	14	3	-	182	47	229	
Germany	-	-	1	6	2	1	8	1	6	-	3	3	7	-	-	-	27	11	38	
Canada	2	5	2	1	4	6	8	3	4	4	7	5	3	-	-	1	30	25	55	
Oth.Pacific	1	2	3	5	22	19	30	15	30	12	16	6	3	1	2	3	107	63	170	
Vanuatu	4	4	4	1	17	12	21	4	15	5	10	-	1	-	2	-	74	26	100	
Hong Kong	-	-	1	-	-	-	3	5	7	-	3	-	1	1	1	-	16	6	22	
Fiji	1	1	10	6	34	20	55	23	56	19	37	12	6	1	3	1	202	83	285	
Oth.Asia	4	-	20	10	84	32	136	19	111	15	90	9	17	3	12	-	474	88	562	
Netherlands	-	-	1	1	2	-	3	2	3	1	5	-	-	1	-	1	14	6	20	
Oth.Europe	-	-	4	3	7	5	12	1	12	4	7	3	1	2	2	-	45	18	63	
France	-	-	1	-	2	2	1	1	5	2	4	3	1	-	-	-	14	8	22	
Italy	-	1	4	-	3	4	3	-	3	1	-	-	1	-	-	-	14	6	20	
Oth.Country	-	-	1	2	8	8	19	7	18	4	6	3	1	1	1	-	54	25	79	
Total	116	88	317	227	743	345	1037	304	1067	333	828	262	270	92	145	70	4,523	1,721	6,244	
	Percentage																			
Australia	2.8	2.0	6.0	4.5	10.9	5.1	14.9	4.6	15.4	5.9	13.4	4.8	4.6	1.4	2.5	1.2	70.5	29.5	100.0	
PNG	1.2	1.2	2.2	1.4	21.4	3.4	23.6	5.4	20.9	4.4	8.0	1.7	1.2	0.2	2.9	1.0	81.3	18.7	100.0	
US	0.5	0.3	5.2	2.2	4.9	3.5	11.1	2.7	16.8	7.3	16.8	8.4	10.1	3.3	3.8	3.0	69.3	30.7	100.0	
NZ	1.5	0.4	4.0	4.4	9.8	5.8	11.9	6.1	18.0	6.1	15.4	5.0	5.0	2.5	2.3	1.9	67.8	32.2	100.0	
UK	1.0	3.0	16.8	8.9	5.9	6.9	7.9	2.0	17.8	5.9	13.9	5.0	-	1.0	2.0	2.0	65.3	34.7	100.0	
Japan	0.4	0.4	5.7	3.9	12.7	5.2	17.9	3.9	17.9	-	15.3	0.9	8.3	6.1	1.3	-	79.5	20.5	100.0	
Germany	-	-	2.6	15.8	5.3	2.6	21.1	2.6	15.8	-	7.9	7.9	18.4	-	-	-	71.1	28.9	100.0	
Canada	3.6	9.1	3.6	1.8	7.3	10.9	14.5	5.5	7.3	7.3	12.7	9.1	5.5	-	-	1.8	54.5	45.5	100.0	
Oth.Pacific	0.6	1.2	1.8	2.9	12.9	11.2	17.6	8.8	17.6	7.1	9.4	3.5	1.8	0.6	1.2	1.8	62.9	37.1	100.0	
Vanuatu	4.0	4.0	4.0	1.0	17.0	12.0	21.0	4.0	15.0	5.0	10.0	-	1.0	-	2.0	-	74.0	26.0	100.0	
Hong Kong	-	-	4.5	-	-	-	13.6	22.7	31.8	-	13.6	-	4.5	4.5	4.5	-	72.7	27.3	100.0	
Fiji	0.4	0.4	3.5	2.1	11.9	7.0	19.3	8.1	19.6	6.7	13.0	4.2	2.1	0.4	1.1	0.4	70.9	29.1	100.0	
Oth.Asia	0.7	-	3.6	1.8	14.9	5.7	24.2	3.4	19.8	2.7	16.0	1.6	3.0	0.5	2.1	-	84.3	15.7	100.0	
Netherlands	-	-	5.0	5.0	10.0	-	15.0	10.0	15.0	5.0	25.0	-	-	5.0	0.0	5.0	70.0	30.0	100.0	
Oth.Europe	-	-	6.3	4.8	11.1	7.9	19.0	1.6	19.0	6.3	11.1	4.8	1.6	3.2	3.2	-	71.4	28.6	100.0	
France	-	-	4.5	-	9.1	9.1	4.5	4.5	22.7	9.1	18.2	13.6	4.5	-	-	-	63.6	36.4	100.0	
Italy	-	5.0	20.0	-	15.0	20.0	15.0	-	15.0	5.0	-	-	5.0	-	-	-	70.0	30.0	100.0	
Oth.Country	-	-	1.3	2.5	10.1	10.1	24.1	8.9	22.8	5.1	7.6	3.8	1.3	1.3	1.3	-	68.4	31.6	100.0	
Total	1.9	1.4	5.1	3.6	11.9	5.5	16.6	4.9	17.1	5.3	13.3	4.2	4.3	1.5	2.3	1.1	72.4	27.6	100.0	

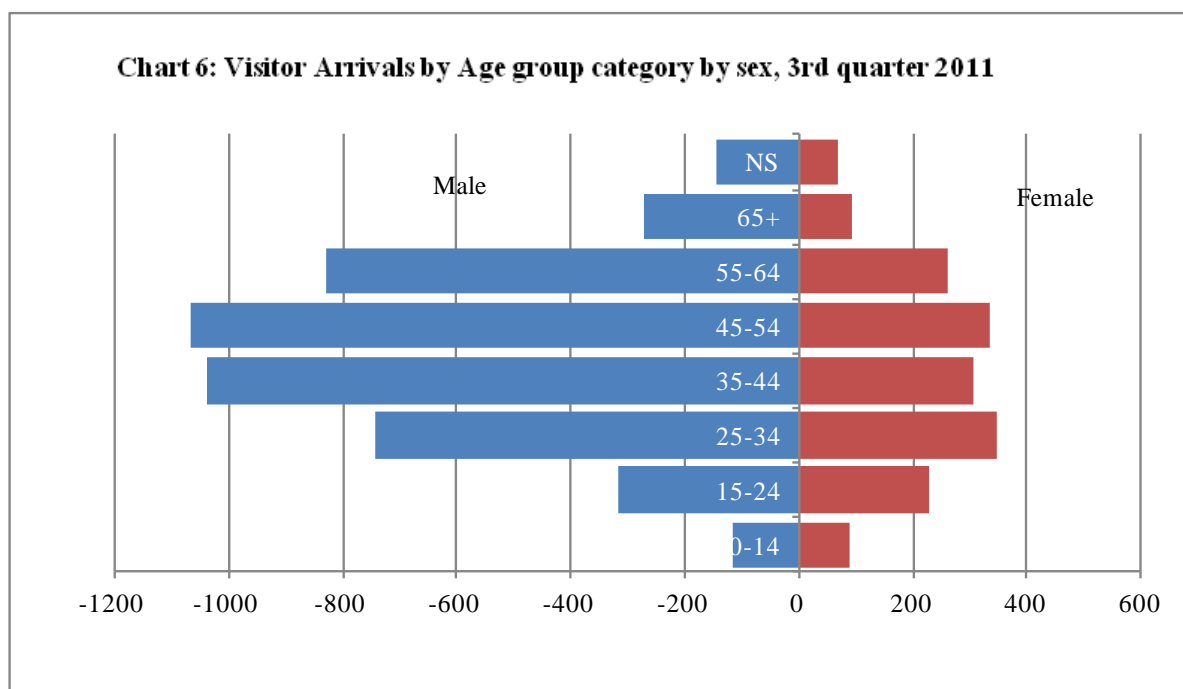


Table 7: Visitor Arrivals by Country of Residence by Occupation and Sex: 3rd Quarter 2011

Country of Usual Residence	Professional and Technical		Administration and Managerial		Clerical & Related Work		Sales Worker		Service Worker		Agriculture Forestry Fishery		Production & Related Work		Other		No Work		Total		
	M	F	M	F	M	F	M	F	M	F	M	F	M	F	M	F	M	F	M	F	All
Australia	758	396	293	78	5	14	20	8	166	66	26	-	126	1	630	250	121	84	2,145	897	3,042
PNG	137	46	56	7	9	2	3	1	10	9	9	2	39	1	200	33	16	9	479	110	589
US	91	42	12	3	1	4	1	2	11	5	-	-	6	-	88	39	45	18	255	113	368
NZ	111	60	49	19	2	4	2	1	33	15	10	1	20	-	89	42	9	12	325	154	479
UK	32	18	9	4	1	1	-	-	-	2	-	-	1	-	18	7	5	3	66	35	101
Japan	63	20	5	-	5	-	7	-	3	5	-	-	3	-	78	11	18	11	182	47	229
Germany	12	9	2	-	-	-	-	-	-	-	-	-	-	-	7	-	6	2	27	11	38
Canada	14	9	1	2	-	2	-	-	-	-	-	-	-	-	12	5	3	7	30	25	55
Oth.Pacific	22	15	4	7	3	1	1	-	17	13	2	-	2	-	54	26	2	1	107	63	170
Vanuatu	29	13	4	-	3	3	1	-	3	1	-	-	2	-	29	8	3	1	74	26	100
Hong Kong	1	1	5	1	-	1	1	-	-	1	-	-	-	-	9	2	-	-	16	6	22
Fiji	60	19	24	11	-	1	3	-	26	11	15	-	2	-	63	40	9	1	202	83	285
Oth.Asia	105	25	48	8	7	1	58	3	7	12	9	1	27	-	178	33	35	5	474	88	562
Netherlands	4	2	2	-	-	-	-	-	-	1	-	-	-	-	8	1	-	2	14	6	20
Oth.Europe	10	9	2	-	1	-	1	-	-	1	-	-	1	-	29	6	1	2	45	18	63
France	8	3	1	-	1	1	-	-	-	-	-	-	-	-	4	4	-	-	14	8	22
Italy	6	3	-	-	-	-	-	-	-	-	-	-	1	-	6	2	1	1	14	6	20
Oth.Country	14	9	9	2	1	-	4	-	2	3	-	-	1	-	21	8	2	3	54	25	79
Total	1477	699	526	142	39	35	102	15	278	145	71	4	231	2	1523	517	276	162	4,523	1,721	6,244
Percentage																					
Australia	24.9	13.0	9.6	2.6	0.2	0.5	0.7	0.3	5.5	2.2	0.9	-	4.1	-	20.7	8.2	4.0	2.8	70.5	29.5	100.0
PNG	23.3	7.8	9.5	1.2	1.5	0.3	0.5	0.2	1.7	1.5	1.5	0.3	6.6	0.2	34.0	5.6	2.7	1.5	81.3	18.7	100.0
US	24.7	11.4	3.3	0.8	0.3	1.1	0.3	0.5	3.0	1.4	-	-	1.6	-	23.9	10.6	12.2	4.9	69.3	30.7	100.0
NZ	23.2	12.5	10.2	4.0	0.4	0.8	0.4	0.2	6.9	3.1	2.1	0.2	4.2	-	18.6	8.8	1.9	2.5	67.8	32.2	100.0
UK	31.7	17.8	8.9	4.0	1.0	1.0	-	-	0.0	2.0	-	-	1.0	-	17.8	6.9	5.0	3.0	65.3	34.7	100.0
Japan	27.5	8.7	2.2	-	2.2	-	3.1	-	1.3	2.2	-	-	1.3	-	34.1	4.8	7.9	4.8	79.5	20.5	100.0
Germany	31.6	23.7	5.3	-	-	-	-	-	-	-	-	-	-	-	18.4	-	15.8	5.3	71.1	28.9	100.0
Canada	25.5	16.4	1.8	3.6	-	3.6	-	-	-	-	-	-	-	-	21.8	9.1	5.5	12.7	54.5	45.5	100.0
Oth.Pacific	12.9	8.8	2.4	4.1	1.8	0.6	0.6	-	10.0	7.6	1.2	-	1.2	-	31.8	15.3	1.2	0.6	62.9	37.1	100.0
Vanuatu	29.0	13.0	4.0	-	3.0	3.0	1.0	-	3.0	1.0	-	-	2.0	-	29.0	8.0	3.0	1.0	74.0	26.0	100.0
Hong Kong	4.5	4.5	22.7	4.5	-	4.5	4.5	-	-	4.5	-	-	-	-	40.9	9.1	-	-	72.7	27.3	100.0
Fiji	21.1	6.7	8.4	3.9	-	0.4	1.1	-	9.1	3.9	5.3	-	0.7	-	22.1	14.0	3.2	0.4	70.9	29.1	100.0
Oth.Asia	18.7	4.4	8.5	1.4	1.2	0.2	10.3	0.5	1.2	2.1	1.6	0.2	4.8	-	31.7	5.9	6.2	0.9	84.3	15.7	100.0
Netherlands	20.0	10.0	10.0	-	-	-	-	-	-	5.0	-	-	-	-	40.0	5.0	-	10.0	70.0	30.0	100.0
Oth.Europe	15.9	14.3	3.2	-	1.6	-	1.6	-	-	1.6	-	-	1.6	-	46.0	9.5	1.6	3.2	71.4	28.6	100.0
France	36.4	13.6	4.5	-	4.5	4.5	-	-	-	-	-	-	-	-	18.2	18.2	-	-	63.6	36.4	100.0
Italy	30.0	15.0	-	-	-	-	-	-	-	-	-	-	5.0	-	30.0	10.0	5.0	5.0	70.0	30.0	100.0
Oth.Country	17.7	11.4	11.4	2.5	1.3	-	5.1	-	2.5	3.8	-	-	1.3	-	26.6	10.1	2.5	3.8	68.4	31.6	100.0
Total	23.7	11.2	8.4	2.3	0.6	0.6	1.6	0.2	4.5	2.3	1.1	0.1	3.7	0.0	24.4	8.3	4.4	2.6	72.4	27.6	100.0

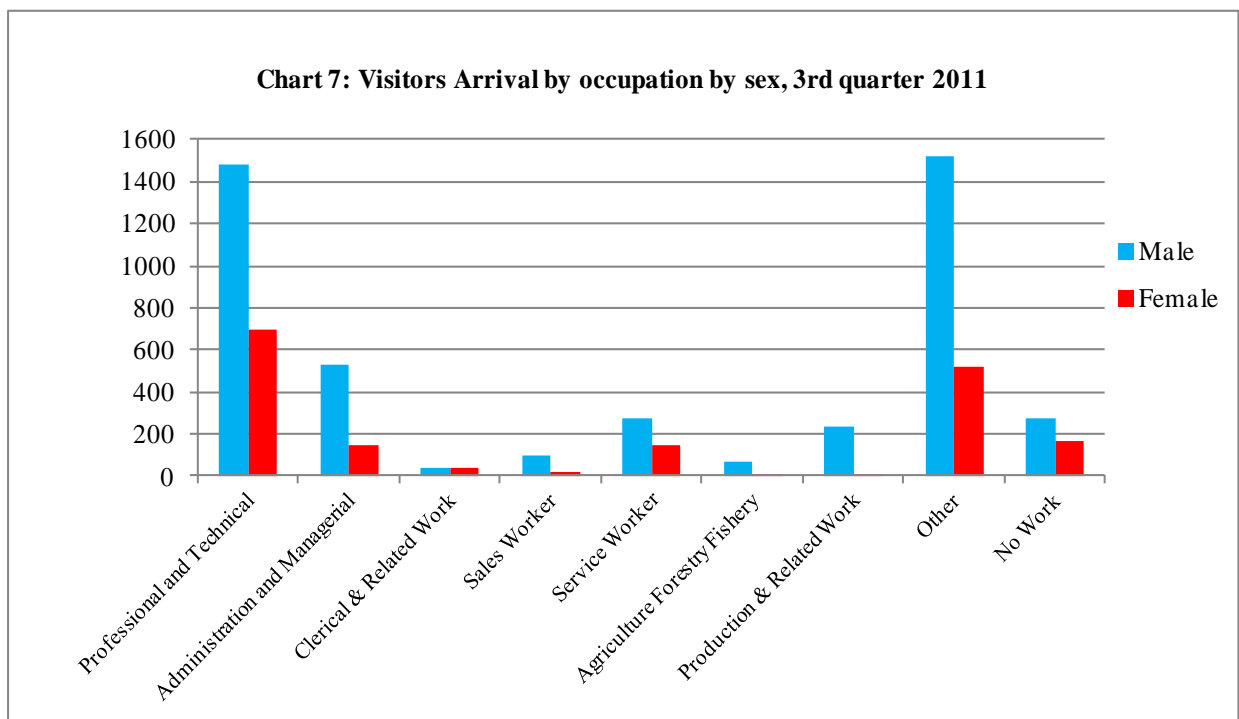
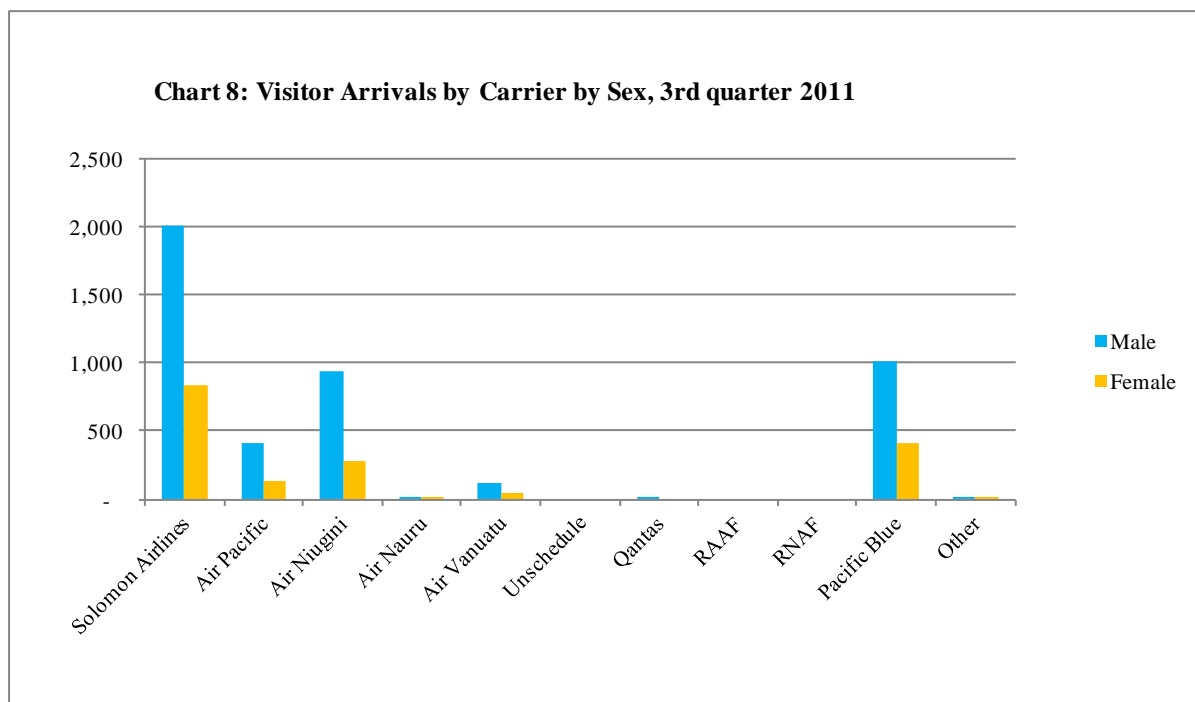


Table 8: Visitor Arrivals by Country of residence by Carrier by Sex: 3rd Quarter 2011

Country of Usual Residence	Solomon Airlines		Air Pacific		Air Niugini		Air Nauru		Air Vanuatu		Unschedule		Qantas		RAAF		RNAS		Pacific Blue		Other		Total		
	M	F	M	F	M	F	M	F	M	F	M	F	M	F	M	F	M	F	M	F	M	F	M	F	All
	Australia	1270	577	22	6	67	14	8	1	50	11	-	-	-	-	-	-	-	713	279	15	9	2,145	897	3,042
PNG	24	3	6	1	414	97	-	-	25	9	-	-	-	-	-	-	-	10	-	-	-	479	110	589	
US	66	22	90	40	61	39	-	-	9	4	-	-	-	-	-	-	-	29	8	-	-	255	113	368	
NZ	138	64	19	3	23	6	2	4	13	3	-	-	-	-	-	-	-	130	74	-	-	325	154	479	
UK	34	17	5	2	9	4	-	-	5	-	-	-	-	-	-	-	-	13	12	-	-	66	35	101	
Japan	46	9	17	2	109	34	-	-	-	-	-	-	1	-	-	-	-	8	2	1	-	182	47	229	
Germany	8	7	9	2	8	1	-	-	-	-	-	-	-	-	-	-	-	2	1	-	-	27	11	38	
Canada	11	14	4	5	6	1	-	-	-	1	-	-	-	-	-	-	-	9	4	-	-	30	25	55	
Oth.Pacific	44	25	19	7	30	21	2	-	-	-	-	-	-	-	-	-	-	12	10	-	-	107	63	170	
Vanuatu	12	6	56	17	2	2	1	-	3	-	-	-	-	-	-	-	-	-	1	-	-	-	74	26	100
Hong Kong	13	6	1	-	2	-	-	-	-	-	-	-	-	-	-	-	-	-	-	-	-	-	16	6	22
Fiji	13	6	119	31	64	42	-	-	1	-	-	-	-	-	-	-	-	4	4	1	-	202	83	285	
Oth.Asia	262	49	30	8	111	19	-	-	8	2	-	-	-	-	-	-	-	62	10	1	-	474	88	562	
Netherlands	7	4	1	-	5	2	-	-	-	-	-	-	-	-	-	-	-	1	-	-	-	14	6	20	
Oth.Europe	24	12	7	3	4	-	-	-	3	1	-	-	-	-	-	-	-	7	2	-	-	45	18	63	
France	6	4	6	2	-	-	1	-	-	1	-	-	-	-	-	-	-	1	1	-	-	14	8	22	
Italy	9	5	-	-	1	1	-	-	-	-	-	-	-	-	-	-	-	4	-	-	-	14	6	20	
Oth.Country	19	12	3	1	24	3	-	-	4	6	-	-	-	-	-	-	-	4	3	-	-	54	25	79	
Total	2,006	842	414	130	940	286	14	5	121	38	-	-	1	-	-	-	1,009	411	18	9	4,523	1,721	6,244		
	Percentage																								
Australia	41.7	19.0	0.7	0.2	2.2	0.5	0.3	-	1.6	0.4	-	-	-	-	-	-	23.4	9.2	0.5	0.3	70.5	29.5	100.0		
PNG	4.1	0.5	1.0	0.2	70.3	16.5	-	-	4.2	1.5	-	-	-	-	-	-	1.7	-	-	-	81.3	18.7	100.0		
US	17.9	6.0	24.5	10.9	16.6	10.6	-	-	2.4	1.1	-	-	-	-	-	-	7.9	2.2	-	-	69.3	30.7	100.0		
NZ	28.8	13.4	4.0	0.6	4.8	1.3	0.4	0.8	2.7	0.6	-	-	-	-	-	-	27.1	15.4	-	-	67.8	32.2	100.0		
UK	33.7	16.8	5.0	2.0	8.9	4.0	-	-	5.0	-	-	-	-	-	-	-	12.9	11.9	-	-	65.3	34.7	100.0		
Japan	20.1	3.9	7.4	0.9	47.6	14.8	-	-	-	-	-	-	0.4	-	-	-	3.5	0.9	0.4	-	79.5	20.5	100.0		
Germany	21.1	18.4	23.7	5.3	21.1	2.6	-	-	-	-	-	-	-	-	-	-	5.3	2.6	-	-	71.1	28.9	100.0		
Canada	20.0	25.5	7.3	9.1	10.9	1.8	-	-	-	1.8	-	-	-	-	-	-	16.4	7.3	-	-	54.5	45.5	100.0		
Oth.Pacific	25.9	14.7	11.2	4.1	17.6	12.4	1.2	-	-	-	-	-	-	-	-	-	7.1	5.9	-	-	62.9	37.1	100.0		
Vanuatu	12.0	6.0	56.0	17.0	2.0	2.0	1.0	-	3.0	-	-	-	-	-	-	-	-	1.0	-	-	-	74.0	26.0	100.0	
Hong Kong	59.1	27.3	4.5	-	9.1	-	-	-	-	-	-	-	-	-	-	-	-	-	-	-	-	72.7	27.3	100.0	
Fiji	4.6	2.1	41.8	10.9	22.5	14.7	-	-	0.4	-	-	-	-	-	-	-	1.4	1.4	0.4	-	70.9	29.1	100.0		
Oth.Asia	46.6	8.7	5.3	1.4	19.8	3.4	-	-	1.4	0.4	-	-	-	-	-	-	11.0	1.8	0.2	-	84.3	15.7	100.0		
Netherlands	35.0	20.0	5.0	-	25.0	10.0	-	-	-	-	-	-	-	-	-	-	5.0	-	-	-	70.0	30.0	100.0		
Oth.Europe	38.1	19.0	11.1	4.8	6.3	-	-	-	4.8	1.6	-	-	-	-	-	-	11.1	3.2	-	-	71.4	28.6	100.0		
France	27.3	18.2	27.3	9.1	-	-	4.5	-	-	4.5	-	-	-	-	-	-	4.5	4.5	-	-	63.6	36.4	100.0		
Italy	45.0	25.0	-	-	5.0	5.0	-	-	-	-	-	-	-	-	-	-	20.0	-	-	-	70.0	30.0	100.0		
Oth.Country	24.1	15.2	3.8	1.3	30.4	3.8	-	-	5.1	7.6	-	-	-	-	-	-	5.1	3.8	-	-	68.4	31.6	100.0		
Total	32.1	13.5	6.6	2.1	15.1	4.6	0.2	0.1	1.9	0.6	-	-	-	-	-	-	16.2	6.6	0.3	0.1	72.4	27.6	100.0		



Appendix 1

Concepts and Definitions

Persons entering Solomon Islands classify themselves into three (3) categories; returning resident, intending resident, and visitor. The concepts and definitions of the various categories are as follows:

(i) *Returning residents*

- Solomon Islanders and non-Solomon Islanders who have left the country and are returning to continue their residence.
- Non Solomon Islanders includes resident permit holders and Diplomatic officials, and their immediate family members. This may also includes legal or official arrangements that fall out side of the above.

(ii) *Intending residents*

- Non-Solomon Islander who wish to take up residence in Solomon Islands.

(iii) *Visitors*

- Any traveller who is not a Solomon Islander and who purposely spend less time – at most a period of 120 days², in the country and with the intention and purpose of visiting.
- *Tourist*
 - Visitors who further classify themselves stating their visit are purposely for '*holiday and vacation*'. This exclude, tourist arrivals by cruise ships.
 - Wife accompanying husband on business purpose is a private tourist unless also working.
 - *World Tourism Organization WTO definition of Tourism:*
*It comprises the activities of persons travelling to and staying in places outside their usual environment for not more than a year for leisure, business and other purposes not related to the exercise of an activity remunerated from within the place visited*³.

(iv) *Markets*

- *Country of Usual Residence*

² Solomon Islands 1993 Statistical Yearbook.

³ Dimensions of Hospitality, Study guide 1. p17

Appendix 2

Table 9: Intending Resident Arrivals by Country of Residence by Occupation and Sex: 3rd Quarter 2011

Country of Usual Residence	Professional and Technical		Administration and Managerial		Clerical & Related Work		Sales Worker		Service Worker		Agriculture Forestry Fishery		Production & Related Work		Other		No Work		Total		
	M	F	M	F	M	F	M	F	M	F	M	F	M	F	M	F	M	F	M	F	All
	Australia	53	30	27	9	-	-	3	1	117	24	-	1	6	-	119	51	18	7	343	123
PNG	8	6	13	-	-	-	-	-	39	5	-	1	4	-	11	7	8	7	83	26	109
US	6	1	1	-	-	-	-	-	-	2	-	-	-	5	1	2	-	14	4	18	
NZ	9	5	4	-	-	-	-	-	15	9	1	-	2	-	13	7	-	1	44	22	66
UK	3	3	1	1	-	-	1	-	-	1	-	-	2	-	6	-	-	-	13	5	18
Japan	14	4	2	-	-	-	-	-	-	1	-	-	-	13	4	3	-	32	9	41	
Germany	1	-	-	-	-	-	-	-	-	-	-	-	-	-	-	-	-	1	-	1	
Canada	1	2	-	-	-	-	-	-	-	-	-	-	-	3	1	-	-	4	3	7	
Oth.Pacific	3	5	1	-	-	-	1	-	7	1	-	-	-	10	3	1	3	23	12	35	
Vanuatu	3	-	-	-	-	-	-	-	1	-	-	-	-	3	1	1	1	8	2	10	
Hong Kong	-	-	-	-	-	-	-	-	-	-	-	-	-	-	-	-	-	-	-	-	-
Fiji	11	4	3	-	-	-	-	-	10	2	4	-	1	-	10	5	1	2	40	13	53
Oth.Asia	36	10	53	7	2	2	29	1	4	3	9	3	18	-	117	11	37	7	305	44	349
Netherlands	1	-	-	-	-	-	-	-	-	-	-	-	-	-	-	-	-	1	1	1	2
Oth.Europe	2	1	1	1	-	-	-	-	-	-	-	-	-	2	3	-	-	5	5	10	
France	-	-	-	-	-	-	-	-	-	-	-	-	-	-	-	-	-	-	-	-	-
Italy	3	-	-	-	-	-	-	-	-	2	-	-	-	-	-	-	-	-	3	2	5
Oth.Country	4	1	-	-	-	-	1	-	-	1	1	-	-	3	1	2	1	11	4	15	
Total	158	72	106	18	2	2	35	2	193	51	15	5	33	-	315	95	73	30	930	275	1,205
Percentage																					
Australia	11.4	6.4	5.8	1.9	-	-	0.6	0.2	25.1	5.2	-	0.2	1.3	-	25.5	10.9	3.9	1.5	73.6	26.4	100.0
PNG	7.3	5.5	11.9	-	-	-	-	-	35.8	4.6	-	0.9	3.7	-	10.1	6.4	7.3	6.4	76.1	23.9	100.0
US	33.3	5.6	5.6	-	-	-	-	-	-	11.1	-	-	-	27.8	5.6	11.1	-	77.8	22.2	100.0	
NZ	13.6	7.6	6.1	-	-	-	-	-	22.7	13.6	1.5	-	3.0	-	19.7	10.6	-	1.5	66.7	33.3	100.0
UK	16.7	16.7	5.6	5.6	-	-	5.6	-	-	5.6	-	-	11.1	-	33.3	-	-	-	72.2	27.8	100.0
Japan	34.1	9.8	4.9	-	-	-	-	-	-	2.4	-	-	-	31.7	9.8	7.3	-	78.0	22.0	100.0	
Germany	100.0	-	-	-	-	-	-	-	-	-	-	-	-	-	-	-	-	-	100.0	0.0	100.0
Canada	14.3	28.6	-	-	-	-	-	-	-	-	-	-	-	42.9	14.3	-	-	57.1	42.9	100.0	
Oth.Pacific	8.6	14.3	2.9	-	-	-	2.9	-	20.0	2.9	-	-	-	28.6	8.6	2.9	8.6	65.7	34.3	100.0	
Vanuatu	30.0	-	-	-	-	-	-	-	10.0	-	-	-	-	30.0	10.0	10.0	10.0	80.0	20.0	100.0	
Hong Kong	-	-	-	-	-	-	-	-	-	-	-	-	-	-	-	-	-	-	-	-	-
Fiji	20.8	7.5	5.7	-	-	-	-	-	18.9	3.8	7.5	-	1.9	-	18.9	9.4	1.9	3.8	75.5	24.5	100.0
Oth.Asia	10.3	2.9	15.2	2.0	0.6	0.6	8.3	0.3	1.1	0.9	2.6	0.9	5.2	-	33.5	3.2	10.6	2.0	87.4	12.6	100.0
Netherlands	-	-	-	-	-	-	-	-	-	-	-	-	-	-	-	-	-	-	-	-	-
Oth.Europe	20.0	10.0	10.0	10.0	-	-	-	-	-	-	-	-	-	20.0	30.0	-	-	50.0	50.0	100.0	
France	-	-	-	-	-	-	-	-	-	-	-	-	-	-	-	-	-	-	-	-	-
Italy	60.0	-	-	-	-	-	-	-	-	40.0	-	-	-	-	-	-	-	-	60.0	40.0	100.0
Oth.Country	26.7	6.7	-	-	-	-	6.7	-	-	6.7	6.7	-	-	20.0	6.7	13.3	6.7	73.3	26.7	100.0	
Total	13.1	6.0	8.8	1.5	0.2	0.2	2.9	0.2	16.0	4.2	1.2	0.4	2.7	-	26.1	7.9	6.1	2.5	77.2	22.8	100.0

Table 10: Intending Resident Arrivals by Country of Residence by Age Groups by Sex: 3rd Quarter 2011

Country of Usual Residence	Age-Group																		Total		
	0-14		15-24		25-34		35-44		45-54		55-64		65+		Not Stated		M	F	All		
	M	F	M	F	M	F	M	F	M	F	M	F	M	F							
Australia	25	11	39	6	62	25	66	31	67	26	61	14	9	3	14	7	343	123	466		
PNG	5	6	4	1	14	6	39	6	9	3	-	-	1	-	11	4	83	26	109		
US	1	-	-	-	2	1	4	-	2	1	3	2	-	-	2	-	14	4	18		
NZ	-	2	2	-	6	4	11	6	11	6	12	4	2	-	-	-	44	22	66		
UK	-	-	-	-	2	1	4	1	3	3	4	-	-	-	-	-	13	5	18		
Japan	2	-	9	2	3	4	5	3	8	-	3	-	1	-	1	-	32	9	41		
Germany	-	-	-	-	-	-	-	-	-	-	-	-	1	-	-	-	1	-	1		
Canada	-	2	-	-	-	-	-	-	3	-	1	1	-	-	-	-	4	3	7		
Oth.Pacific	1	3	1	1	8	1	2	4	6	1	2	1	-	1	3	-	23	12	35		
Vanuatu	1	-	-	-	1	2	2	-	3	-	-	-	-	-	1	-	8	2	10		
Hong Kong	-	-	-	-	-	-	-	-	-	-	-	-	-	-	-	-	-	-	-		
Fiji	2	1	1	2	8	2	9	2	13	3	4	2	1	-	2	1	40	13	53		
Oth.Asia	4	1	25	3	74	14	84	12	79	9	25	2	2	-	12	3	305	44	349		
Netherlands	-	-	-	-	-	-	1	1	-	-	-	-	-	-	-	-	1	1	2		
Oth.Europe	-	-	1	-	-	4	1	-	2	1	1	-	-	-	-	-	5	5	10		
France	-	-	-	-	-	-	-	-	-	-	-	-	-	-	-	-	-	-	-		
Italy	-	-	1	-	-	-	-	-	-	2	2	-	-	-	-	-	3	2	5		
Oth.Country	-	-	2	1	2	-	3	2	2	-	2	-	-	-	-	1	11	4	15		
Total	41	26	85	16	182	64	231	68	208	55	120	26	17	4	46	16	930	275	1,205		
	Percentage																				
Australia	5.4	2.4	8.4	1.3	13.3	5.4	14.2	6.7	14.4	5.6	13.1	3.0	1.9	0.6	3.0	1.5	73.6	26.4	100.0		
PNG	4.6	5.5	3.7	0.9	12.8	5.5	35.8	5.5	8.3	2.8	-	-	0.9	-	10.1	3.7	76.1	23.9	100.0		
US	5.6	-	-	-	11.1	5.6	22.2	-	11.1	5.6	16.7	11.1	-	-	11.1	-	77.8	22.2	100.0		
NZ	-	3.0	3.0	-	9.1	6.1	16.7	9.1	16.7	9.1	18.2	6.1	3.0	-	-	-	66.7	33.3	100.0		
UK	-	-	-	-	11.1	5.6	22.2	5.6	16.7	16.7	22.2	-	-	-	-	-	72.2	27.8	100.0		
Japan	4.9	-	22.0	4.9	7.3	9.8	12.2	7.3	19.5	-	7.3	-	2.4	-	2.4	-	78.0	22.0	100.0		
Germany	-	-	-	-	-	-	-	-	-	-	0.0	-	100.0	-	-	-	100.0	-	100.0		
Canada	-	28.6	-	-	-	-	-	-	42.9	-	14.3	14.3	-	-	-	-	57.1	42.9	100.0		
Oth.Pacific	2.9	8.6	2.9	2.9	22.9	2.9	5.7	11.4	17.1	2.9	5.7	2.9	-	2.9	8.6	-	65.7	34.3	100.0		
Vanuatu	10.0	-	-	-	10.0	20.0	20.0	-	30.0	-	-	-	-	-	10.0	-	80.0	20.0	100.0		
Hong Kong	-	-	-	-	-	-	-	-	-	-	-	-	-	-	-	-	-	-	-		
Fiji	3.8	1.9	1.9	3.8	15.1	3.8	17.0	3.8	24.5	5.7	7.5	3.8	1.9	-	3.8	1.9	75.5	24.5	100.0		
Oth.Asia	1.1	0.3	7.2	0.9	21.2	4.0	24.1	3.4	22.6	2.6	7.2	0.6	0.6	-	3.4	0.9	87.4	12.6	100.0		
Netherlands	-	-	-	-	-	-	-	-	-	-	-	-	-	-	-	-	-	-	-		
Oth.Europe	-	-	10.0	-	-	40.0	10.0	-	20.0	10.0	10.0	-	-	-	-	-	50.0	50.0	100.0		
France	-	-	-	-	-	-	-	-	-	-	-	-	-	-	-	-	-	-	-		
Italy	-	-	20.0	-	-	-	-	-	-	40.0	40.0	-	-	-	-	-	60.0	40.0	100.0		
Oth.Country	-	-	13.3	6.7	13.3	-	20.0	13.3	13.3	-	13.3	-	-	-	-	6.7	73.3	26.7	100.0		
Total	3.4	2.2	7.1	1.3	15.1	5.3	19.2	5.6	17.3	4.6	10.0	2.2	1.4	0.3	3.8	1.3	77.2	22.8	100.0		

Table 11: Returning Resident Arrivals by Country of Residence by Age Groups by Sex: 3rd Quarter 2011

Country of Usual Residence	Age-Group																Total		
	0-14		15-24		25-34		35-44		45-54		55-64		65+		Not Stated		M	F	All
	M	F	M	F	M	F	M	F	M	F	M	F	M	F	M	F	M	F	All
Australia	-	-	-	-	-	-	1	-	1	-	-	-	-	-	-	-	2	-	2
PNG	-	-	-	-	-	-	-	-	-	-	-	-	-	-	-	-	-	-	-
US	-	-	-	-	-	-	-	-	-	-	-	-	-	-	-	-	-	-	-
NZ	-	-	-	-	-	-	-	-	-	-	-	-	-	-	-	-	-	-	-
UK	-	-	-	-	-	-	-	-	-	-	-	-	-	-	-	-	-	-	-
Japan	1	-	-	-	1	-	3	1	-	-	-	-	-	-	-	-	5	1	6
Germany	-	-	-	-	-	-	-	-	-	-	-	-	-	-	-	-	-	-	-
Canada	-	-	-	-	-	-	-	-	-	-	-	-	-	-	-	-	-	-	-
Oth.Pacific	-	-	-	-	-	-	1	-	-	-	-	-	-	-	-	-	1	-	1
Vanuatu	-	-	-	-	-	-	-	-	-	-	-	-	-	-	-	-	-	-	-
Hong Kong	-	-	-	-	-	-	-	-	-	-	-	-	-	-	-	-	-	-	-
Fiji	-	-	-	-	-	-	-	-	-	-	-	-	-	-	-	-	-	-	-
Oth.Asia	-	-	-	-	1	-	-	-	-	-	-	-	-	-	-	-	1	-	1
Netherlands	-	-	-	-	-	-	-	-	-	-	-	-	-	-	-	-	-	-	-
Oth.Europe	-	-	-	-	-	-	-	-	-	-	-	-	-	-	-	-	-	-	-
France	-	-	-	-	-	-	-	-	-	-	-	-	-	-	-	-	-	-	-
Italy	-	-	-	-	-	-	-	-	-	-	-	-	-	-	-	-	-	-	-
Oth.Country	-	-	-	-	-	-	-	-	-	-	1	-	-	-	-	-	1	-	1
Solomon Is.	119	107	203	123	543	265	617	243	429	156	233	65	74	8	130	53	2,348	1,020	3,368
Total	120	107	203	123	545	265	622	244	430	156	234	65	74	8	130	53	2,358	1,021	3,379
	<u>Percentage</u>																		
Australia	-	-	-	-	-	-	50.0	-	50.0	-	-	-	-	-	-	-	100.0	-	100.0
PNG	-	-	-	-	-	-	-	-	-	-	-	-	-	-	-	-	-	-	-
US	-	-	-	-	-	-	-	-	-	-	-	-	-	-	-	-	-	-	-
NZ	-	-	-	-	-	-	-	-	-	-	-	-	-	-	-	-	-	-	-
UK	-	-	-	-	-	-	-	-	-	-	-	-	-	-	-	-	-	-	-
Japan	16.7	-	-	-	16.7	-	50.0	16.7	-	-	-	-	-	-	-	-	83.3	16.7	100.0
Germany	-	-	-	-	-	-	-	-	-	-	-	-	-	-	-	-	-	-	-
Canada	-	-	-	-	-	-	-	-	-	-	-	-	-	-	-	-	-	-	-
Oth.Pacific	-	-	-	-	-	-	-	-	-	-	-	-	-	-	-	-	-	-	-
Vanuatu	-	-	-	-	-	-	-	-	-	-	-	-	-	-	-	-	-	-	-
Hong Kong	-	-	-	-	-	-	-	-	-	-	-	-	-	-	-	-	-	-	-
Fiji	-	-	-	-	-	-	-	-	-	-	-	-	-	-	-	-	-	-	-
Oth.Asia	-	-	-	-	100.0	-	-	-	-	-	-	-	-	-	-	-	100.0	-	100.0
Netherlands	-	-	-	-	-	-	-	-	-	-	-	-	-	-	-	-	-	-	-
Oth.Europe	-	-	-	-	-	-	-	-	-	-	-	-	-	-	-	-	-	-	-
France	-	-	-	-	-	-	-	-	-	-	-	-	-	-	-	-	-	-	-
Italy	-	-	-	-	-	-	-	-	-	-	-	-	-	-	-	-	-	-	-
Oth.Country	-	-	-	-	-	-	-	-	-	-	100.0	-	-	-	-	-	100.0	-	100.0
Solomon Is.	3.5	3.2	6.0	3.7	16.1	7.9	18.3	7.2	12.7	4.6	6.9	1.9	2.2	0.2	3.9	1.6	69.7	30.3	100.0
Total	3.6	3.2	6.0	3.6	16.1	7.8	18.4	7.2	12.7	4.6	6.9	1.9	2.2	0.2	3.8	1.6	69.8	30.2	100.0

Table 12: Returning Resident Arrivals by Country of Residence by Occupation and Sex: 3rd Quarter 2011

Country of Usual Residence	Professional and Technical		Administration and Managerial		Clerical & Related Work		Sales Worker		Service Worker		Agriculture Forestry Fishery		Production & Related Work		Other		No Work		Total		All
	M	F	M	F	M	F	M	F	M	F	M	F	M	F	M	F	M	F	M	F	
Australia	-	-	-	-	-	-	-	-	-	-	-	-	-	-	2	-	-	-	2	-	2
PNG	-	-	-	-	-	-	-	-	-	-	-	-	-	-	-	-	-	-	-	-	-
US	-	-	-	-	-	-	-	-	-	-	-	-	-	-	-	-	-	-	-	-	-
NZ	-	-	-	-	-	-	-	-	-	-	-	-	-	-	-	-	-	-	-	-	-
UK	-	-	-	-	-	-	-	-	-	-	-	-	-	-	-	-	-	-	-	-	-
Japan	1	-	-	-	-	-	-	1	-	-	1	-	-	-	2	-	1	-	5	1	6
Germany	-	-	-	-	-	-	-	-	-	-	-	-	-	-	-	-	-	-	-	-	-
Canada	-	-	-	-	-	-	-	-	-	-	-	-	-	-	-	-	-	-	-	-	-
Oth.Pacific	-	-	-	-	-	-	-	-	-	-	-	-	-	-	1	-	-	-	1	-	1
Vanuatu	-	-	-	-	-	-	-	-	-	-	-	-	-	-	-	-	-	-	-	-	-
Hong Kong	-	-	-	-	-	-	-	-	-	-	-	-	-	-	-	-	-	-	-	-	-
Fiji	-	-	-	-	-	-	-	-	-	-	-	-	-	-	-	-	-	-	-	-	-
Oth.Asia	-	-	-	-	-	-	-	-	-	-	-	-	-	-	-	-	1	-	1	-	1
Netherlands	-	-	-	-	-	-	-	-	-	-	-	-	-	-	-	-	-	-	-	-	-
Oth.Europe	-	-	-	-	-	-	-	-	-	-	-	-	-	-	-	-	-	-	-	-	-
France	-	-	-	-	-	-	-	-	-	-	-	-	-	-	-	-	-	-	-	-	-
Italy	-	-	-	-	-	-	-	-	-	-	-	-	-	-	-	-	-	-	-	-	-
Oth.Country	1	-	-	-	-	-	-	-	-	-	-	-	-	-	-	-	-	-	1	-	1
Solomon Is.	760	293	264	87	30	40	45	14	98	144	46	4	67	3	833	315	205	120	2,348	1,020	3,368
Total	762	293	264	87	30	40	45	15	98	144	47	4	67	3	838	315	207	120	2,358	1,021	3,379
<u>Percentage</u>																					
Australia	-	-	-	-	-	-	-	-	-	-	-	-	-	-	100.0	-	-	-	100.0	-	100.0
PNG	-	-	-	-	-	-	-	-	-	-	-	-	-	-	-	-	-	-	-	-	-
US	-	-	-	-	-	-	-	-	-	-	-	-	-	-	-	-	-	-	-	-	-
NZ	-	-	-	-	-	-	-	-	-	-	-	-	-	-	-	-	-	-	-	-	-
UK	-	-	-	-	-	-	-	-	-	-	-	-	-	-	-	-	-	-	-	-	-
Japan	16.7	-	-	-	-	-	16.7	-	-	16.7	-	-	-	-	33.3	-	16.7	-	83.3	16.7	100.0
Germany	-	-	-	-	-	-	-	-	-	-	-	-	-	-	-	-	-	-	-	-	-
Canada	-	-	-	-	-	-	-	-	-	-	-	-	-	-	-	-	-	-	-	-	-
Oth.Pacific	-	-	-	-	-	-	-	-	-	-	-	-	-	-	-	-	-	-	-	-	-
Vanuatu	-	-	-	-	-	-	-	-	-	-	-	-	-	-	-	-	-	-	-	-	-
Hong Kong	-	-	-	-	-	-	-	-	-	-	-	-	-	-	-	-	-	-	-	-	-
Fiji	-	-	-	-	-	-	-	-	-	-	-	-	-	-	-	-	-	-	-	-	-
Oth.Asia	-	-	-	-	-	-	-	-	-	-	-	-	-	-	-	-	100.0	-	100.0	-	100.0
Netherlands	-	-	-	-	-	-	-	-	-	-	-	-	-	-	-	-	-	-	-	-	-
Oth.Europe	-	-	-	-	-	-	-	-	-	-	-	-	-	-	-	-	-	-	-	-	-
France	-	-	-	-	-	-	-	-	-	-	-	-	-	-	-	-	-	-	-	-	-
Italy	-	-	-	-	-	-	-	-	-	-	-	-	-	-	-	-	-	-	-	-	-
Oth.Country	100.0	-	-	-	-	-	-	-	-	-	-	-	-	-	-	-	-	-	100.0	-	100.0
Solomon Is.	22.6	8.7	7.8	2.6	0.9	1.2	1.3	0.4	2.9	4.3	1.4	0.1	2.0	0.1	24.7	9.4	6.1	3.6	69.7	30.3	100.0
Total	22.6	8.7	7.8	2.6	0.9	1.2	1.3	0.4	2.9	4.3	1.4	0.1	2.0	0.1	24.8	9.3	6.1	3.6	69.8	30.2	100.0