



Solomon Islands Government

Statistical Bulletin: No: 03/2012

VISITOR STATISTICS

(Fourth Quarter 2011)

Solomon Islands Statistics Office

Ministry of Finance

Honiara

TABLE OF CONTENTS

| | |
|---------------------------------------|---|
| Introduction..... | 3 |
| COMMENTARY OF RESULTS | 5 |
| International Arrivals..... | 5 |
| Arrivals by Country of Residence..... | 5 |
| Visitor by Month..... | 5 |
| Tourist..... | 5 |
| Visitors by Purpose of Visit..... | 5 |
| Visitor by Age Group..... | 5 |
| Visitor by Occupation:..... | 5 |
| Visitor by Carrier..... | 6 |

Charts

| | |
|--|----|
| Chart 1: Arrivals by Category, 4 th Quarter 2011..... | 7 |
| Chart 2: Visitor Arrivals by Country of Residence by quarter: 4 th Quarter 2011..... | 8 |
| Chart 3: Visitor Arrivals by Month, 2007 to 4 th Quarter 2011 | 9 |
| Chart 4: Tourist Arrivals by Country of Residence, 4 th Quarter 2011 | 10 |
| Chart 5: Visitor Arrivals by Country of Residence by Purpose of Visit, 4 th Quarter 2011..... | 11 |
| Chart 6: Visitor Arrivals by Age group category by sex, 4 th quarter 2011..... | 12 |
| Chart 7: Visitor Arrivals by Occupation by sex, 4 th quarter 2011..... | 13 |
| Chart 8: Visitor Arrivals by Carrier by sex, 4 th quarter 2011..... | 14 |

Tables

| | |
|---|----|
| Table 1: Total Arrivals Classified by Purpose of Travel by Sex by Year by Quarter: 4 th Quarter 2011 | 7 |
| Table 2: Visitors Arrivals by Country of Residence by Year by Quarter: 4 th Quarter 2011 | 8 |
| Table 3: Visitors Arrivals by Month: 2006 to 4 th Quarter 2011..... | 9 |
| Table 4: Visitors Classified as Tourists by Country of Residence by Year, Quarter and Average Length | 10 |
| of Stay: 2008 to 4 th Quarter 2011 | 10 |
| Table 5: Visitor Arrivals by Country of Residence by Purpose of Visit by sex: 4 th Quarter 2011..... | 11 |
| Table 6: Visitors Arrivals by Country of Residence by Age Groups by sex: 4 th Quarter 2011..... | 12 |
| Table 7: Visitors Arrivals by Country of Residence by Occupation and Sex: 4 th Quarter 2011 | 13 |
| Table 8: Visitors Arrivals by Country of Residence by Carrier By Sex: 4 th Quarter 2011..... | 14 |

| | |
|--------------------------------|----|
| Appendix 1 | 15 |
| Concepts and Definitions | 15 |
| Appendix 2..... | 16 |

| | |
|---|----|
| Table 9: Intending Resident Arrivals by Country of residence by Occupation and sex: 4 th Quarter 2011..... | 16 |
| Table 10: Intending Resident Arrivals by country of Residence by Age Groups by Sex: 4 th Quarter 2011 | 17 |
| Table 11: Returning Resident Arrivals by country of Residence by Occupation and sex: 4 th Quarter 2011 | 18 |
| Table 12: Returning Resident Arrivals by country of Residence by Age Groups and sex: 4 th Quarter 2011 | 19 |

Introduction

This quarterly bulletin is produced by the National Statistics Office NSO in the Ministry of Finance and Treasury. It provides information on international arrivals comprised of the returning resident, intending resident, and visitor. The explanation of these categories is provided in Appendix 1 of the bulletin.

Visitor category comprised the bigger share of the bulletin, (portrayed in tables 1 to 8); compared to the returning and intending resident category portrayed in Tables 1, and 9 to 12. The bulletin includes twelve tables and eight charts stretched over cross-field tabulation, preferably to meet information need of local, regional, and international researchers.

The information captured through a self fill Disembarkation form that was completed by all disembarking passengers. The forms were collected by Immigration officials at international check-in counters on arrival. The coverage of the bulletin is complete.

Sheer acknowledgement is owed to the Immigration Department for their continuous support of this bulletin, by providing an office space and permitting the statistics office to input completed forms. With the official arrangement in-placed between the Statistics and Immigration departments this bulletin is possible.

The inclusion of four new tables 9 to 12 in Appendix 2 of the bulletin anticipates to complete the distribution portrait of Intending and Returning resident. The distribution is by age groups, occupation and by country of usual residence.

Data limitations, highlighted in the previous bulletin still remain, though some have substantially improved but noted again for ease of reference as follows:-

- Data entry duplication by the Immigration and Statistics departments was a long standing issue. Discussion of the issues had been made by the two departments, though resolution has been recognized, this was yet to be put in place.
- Timeliness of visitor statistics has improved but the bulletin may be delayed by the production process.
- The information contained in the bulletin is based on information captured from the data source by the SINSO.
- The monetary value of the industry is not available and thus not possible in this bulletin. The concepts and definitions of the arrival categories were included in Appendix 1. The symbols that are likely to be used are:

| | |
|-----|---|
| - | zero if representing a value |
| - | negative change if representing a percentage change |
| + | positive change if representing a percentage change |
| p | preliminary figure, subject to revision |
| r | revised |
| e | estimate |
| n/a | not available |

For more information contact the Statistics Office, Department of Finance and Treasury:

TELEPHONE : (677) 27835

FACSMILE : (677) 23775

E-MAIL : STATS-management@mof.gov.sb

: STATS-SocialDemography@mof.gov.sb

WEBSITE : **<http://www.spc.int/prism/country/sb/stats>**

Contact persons: 1. Mrs. Irene KALAUMA, Principal Statistician
 2. Mrs. Anterlyn TUZAKANA, Senior Statistician

COMMENTARY OF RESULTS

International Arrivals

Total Arrivals for the fourth quarter of 2011 was 12,214. This is an increase of 12.8% compared to the previous quarter (3rd Quarter 2011). Compared to the same quarter last year, it showed an increase of 13.3%.

Arrivals classified by the category for the fourth quarter of 2011 showed that returning resident comprise of 41% while intending resident 9% and visitor 50%.

Visitor arrivals for the fourth quarter showed a decline of 2.7% to 6,073 compared to the third quarter 2011 figure of 6,244. Compared to the same quarter in 2010 it showed an increase of 14.7%. Table 1 showed, visitor and returning resident categories comprised the larger proportion of all arrivals while the intending resident represents the lesser share during the quarter. Chart 1, gives a clear picture of all the categories.

Visitor by Country of Residence

Arrivals by country of residence for fourth quarter showed that Australians (49.7%) are frequent travellers to Solomon Islands followed by Papua New Guinea (9%), Other Asia (8%), New Zealand (7%), Fiji (5.4%), USA (4%) and Other Pacific (3.7%).

Total Arrivals for the whole year 2011 was 22,941. This is an increase of 11.8% compared to the previous year 2010. Table 2 showed that frequent travellers to Solomon Islands are same as above all through out the year.

Visitor by Month

Visitors by monthly arrivals for fourth quarter showed that November has the highest number of arrivals of 2,195 persons. This was followed by the month of December which recorded a total of 1,947 persons and October the least with 1,931 persons.

Tourists

Tourist¹ arrivals for the fourth quarter of the year totalled to 1,558 persons and they spent an average of 15 days in the country. The highest number of tourists recorded for the quarter comes from Australia (58.7%) and staying in the country for an average of 20 days. This was followed by USA (6.5%), Other Asia (5.2%), NZ (4.5%) PNG (4.3%) and Japan (3.3%).

Visitor by Purpose of Visit

Distribution of visitors by purpose of visit confirmed Business & conference (34.9%) as most popular during the quarter. This was followed by Other (27.8%), Holiday & Vocation (24.9%), Visit friends & relatives (11.7%) and Transit & stopover the least by 0.8%.

Visitor by Age Group

Visitor Arrivals by broad age groups show that 78.4% of arrivals were in the 25years to 64years age range. The younger and the older age brackets represent 17.7% while the remaining 3.8% represents arrivals who did not state their age. Male represent 71.5% of the arrival and female 28.5%. (Refer to Chart 6)

Visitor by Occupation

Visitor by occupational category revealed that Professional & Technical (34.2%) was the main occupation during the quarter. This is followed by Other (32.3%), Administration and managerial (10.1%), Service worker (7.5%), No work (7.4%), and Production Related Work (4%). Table 7 further revealed that Australia not only dominated the Arrivals in terms of markets but also dominated most of the categories of occupations during the quarter. Refer to Table 7 for further analysis.

¹ Refer to Appendix 1 for the definition

Visitor by Carrier

The most popular carriers during the quarter were Solomon Airlines (43.7%) and Unscheduled (28.4%). These were followed by Air Niu Gini (17.6%) and Air Pacific (8.5%).

Table 1: Total Arrivals Classified by Purpose of Travel by Sex, by Year by Quarter: 4th Quarter 2011

| Year / Quarter | Returning Resident | | | | | | Intending Resident | | | | Visitor | | | Total | | |
|--------------------------------------|--------------------|-------|-------|----------------------|---------|---------|--------------------|-------|-------|-------|---------|-------|-------|-------|-------|--------|
| | Solomon Islander | | | Non-Solomon Islander | | | All | M | F | T | M | F | T | M | F | All |
| | M | F | T | M | F | T | | | | | | | | | | |
| 2006 3 rd | 1,094 | 557 | 1,651 | 58 | 8 | 66 | 1,717 | 481 | 114 | 595 | 1,705 | 733 | 2,438 | 3,338 | 1,412 | 4,750 |
| 4 th | 2,699 | 1,255 | 3,954 | 2 | 2 | 4 | 3,958 | 659 | 165 | 824 | 2,234 | 907 | 3,141 | 5,594 | 2,329 | 7,923 |
| 2007 1 st | 1,528 | 901 | 2,429 | 5 | - | 5 | 2,434 | 740 | 206 | 946 | 2,144 | 673 | 2,817 | 4,417 | 1,780 | 6,197 |
| 2 nd | 1,798 | 913 | 2,711 | 102 | 31 | 133 | 2,844 | 696 | 195 | 891 | 2,817 | 1,037 | 3,854 | 5,413 | 2,176 | 7,589 |
| 3 rd | 1,826 | 929 | 2,755 | 59 | 12 | 71 | 2,826 | 487 | 172 | 659 | 2,195 | 1,225 | 3,420 | 4,567 | 2,338 | 6,905 |
| 4 th | 2,107 | 1,095 | 3,202 | 486 | 235 | 721 | 3,923 | 589 | 153 | 742 | 2,525 | 1,132 | 3,657 | 5,707 | 2,615 | 8,322 |
| 2008 1 st | 1,537 | 938 | 2,475 | 4 | 2 | 6 | 2,481 | 537 | 174 | 711 | 2,094 | 879 | 2,973 | 4,172 | 1,993 | 6,165 |
| 2 nd | 2,492 | 1,268 | 3,760 | 3 | 1 | 4 | 3,764 | 312 | 87 | 399 | 2,857 | 1,344 | 4,201 | 5,664 | 2,700 | 8,364 |
| 3 rd | 1,593 | 952 | 2,545 | 761 | 437 | 1,198 | 3,743 | 605 | 155 | 760 | 3,138 | 1,480 | 4,618 | 6,097 | 3,024 | 9,121 |
| 4 th | 2,507 | 1,366 | 3,873 | 969 | 453 | 1,422 | 5,295 | 396 | 125 | 521 | 3,063 | 1,409 | 4,472 | 6,935 | 3,353 | 10,288 |
| 2009 1 st | 1,173 | 760 | 1,933 | 677 | 436 | 1,113 | 3,046 | 659 | 315 | 974 | 3,015 | 1,258 | 4,273 | 5,524 | 2,769 | 8,293 |
| 2 nd | 1,427 | 728 | 2,155 | 471 | 238 | 709 | 2,864 | 611 | 244 | 855 | 3,242 | 1,374 | 4,616 | 5,751 | 2,584 | 8,335 |
| 3 rd | 1,182 | 709 | 1,891 | 425 | 220 | 645 | 2,536 | 786 | 355 | 1,141 | 3,263 | 1,519 | 4,782 | 5,656 | 2,803 | 8,459 |
| 4 th | 2,145 | 1,152 | 3,297 | 393 | 197 | 590 | 3,887 | 722 | 282 | 1,004 | 3,177 | 1,412 | 4,589 | 6,437 | 3,043 | 9,480 |
| 2010 1 st | 1,045 | 695 | 1,740 | 550 | 342 | 892 | 2,632 | 808 | 380 | 1,188 | 3,115 | 1,095 | 4,210 | 5,518 | 2,512 | 8,030 |
| 2 nd | 1,337 | 707 | 2,044 | 494 | 272 | 766 | 2,810 | 808 | 307 | 1,115 | 3,370 | 1,384 | 4,754 | 6,009 | 2,670 | 8,679 |
| 3 rd | 1,421 | 730 | 2,151 | 485 | 274 | 759 | 2,910 | 835 | 316 | 1,151 | 4,494 | 1,768 | 6,262 | 7,235 | 3,088 | 10,323 |
| 4 th | 2,783 | 1,550 | 4,333 | 13 | 4 | 17 | 4,350 | 848 | 284 | 1,132 | 3,766 | 1,529 | 5,295 | 7,410 | 3,367 | 10,777 |
| 2011 1 st | 1,187 | 724 | 1,911 | 694 | 332 | 1,026 | 2,937 | 1,058 | 362 | 1,420 | 3,972 | 1,147 | 5,119 | 6,911 | 2,565 | 9,476 |
| 2 nd | 1,601 | 880 | 2,481 | 615 | 292 | 907 | 3,388 | 716 | 258 | 974 | 4,071 | 1,434 | 5,505 | 7,003 | 2,864 | 9,867 |
| 3 rd | 1,716 | 739 | 2,455 | 642 | 282 | 924 | 3,379 | 930 | 275 | 1,205 | 4,523 | 1,721 | 6,244 | 7,811 | 3,017 | 10,828 |
| 4 th | 3,297 | 1,765 | 5,062 | 4 | 2 | 6 | 5,068 | 805 | 268 | 1,073 | 4,341 | 1,732 | 6,073 | 8,447 | 3,767 | 12,214 |
| Percentage change | | | | | | | | | | | | | | | | |
| 08 th -09 ^{1st} | -53.2 | -44.4 | -50.1 | -30.1 | -3.8 | -21.7 | -42.5 | 66.4 | 152.0 | 86.9 | -1.6 | -10.7 | -4.4 | -20.3 | -17.4 | -19.4 |
| 09 ^{1st} -09 ^{2nd} | 21.7 | -4.2 | 11.5 | -30.4 | -45.4 | -36.3 | -6.0 | -7.3 | -22.5 | -12.2 | 7.5 | 9.2 | 8.0 | 4.1 | -6.7 | 0.5 |
| 08 ^{2nd} -09 ^{2nd} | -42.7 | -42.6 | -42.7 | 15600.0 | 23700.0 | 17625.0 | -23.9 | 95.8 | 180.5 | 114.3 | 13.5 | 2.2 | 9.9 | 1.5 | -4.3 | -0.3 |
| 09 ^{2nd} -09 ^{3rd} | -17.2 | -2.6 | -12.3 | -9.8 | -7.6 | -9.0 | -11.5 | 28.6 | 45.5 | 33.5 | 0.6 | 10.6 | 3.6 | -1.7 | 8.5 | 1.5 |
| 08 ^{3rd} -09 ^{3rd} | -25.8 | -25.5 | -25.7 | -44.2 | -49.7 | -46.2 | -32.2 | 29.9 | 129.0 | 50.1 | 4.0 | 2.6 | 3.6 | -7.2 | -7.3 | -7.3 |
| 09 ^{3rd} -09 ^{4th} | 81.5 | 62.5 | 74.4 | -7.5 | -10.5 | -8.5 | 53.3 | -8.1 | -20.6 | -12.0 | -2.6 | -7.0 | -4.0 | 13.8 | 8.6 | 12.1 |
| 08 ^{4th} -09 ^{4th} | -14.4 | -15.7 | -14.9 | -59.4 | -56.5 | -58.5 | -26.6 | 82.3 | 125.6 | 92.7 | 3.7 | 0.2 | 2.6 | -7.2 | -9.2 | -7.9 |
| 09 ^{4th} -10 ^{1st} | -51.3 | -39.7 | -47.2 | 39.9 | 73.6 | 51.2 | -32.3 | 11.9 | 34.8 | 18.3 | -2.0 | -22.5 | -8.3 | -14.3 | -17.4 | -15.3 |
| 09 ^{1st} -10 ^{1st} | -10.9 | -8.6 | -10.0 | -18.8 | -21.6 | -19.9 | -13.6 | 22.6 | 20.6 | 22.0 | 3.3 | -13.0 | -1.5 | -0.1 | -9.3 | -3.2 |
| 10 ^{1st} -10 ^{2nd} | 27.9 | 1.7 | 17.5 | -10.2 | -20.5 | -14.1 | 6.8 | 0.0 | -19.2 | -6.1 | 8.2 | 26.4 | 12.9 | 8.9 | 6.3 | 8.1 |
| 09 ^{2nd} -10 ^{2nd} | -6.3 | -2.9 | -5.2 | 4.9 | 14.3 | 8.0 | -1.9 | 32.2 | 25.8 | 30.4 | 3.9 | 0.7 | 3.0 | 4.5 | 3.3 | 4.1 |
| 10 ^{2nd} -10 ^{3rd} | 6.3 | 3.3 | 5.2 | -1.8 | 0.7 | -0.9 | 3.6 | 3.3 | 2.9 | 3.2 | 33.4 | 27.7 | 31.7 | 20.4 | 15.7 | 18.9 |
| 09 ^{3rd} -10 ^{3rd} | 20.2 | 3.0 | 13.7 | 14.1 | 24.5 | 17.7 | 14.7 | 6.2 | -11.0 | 0.9 | 37.7 | 16.4 | 30.9 | 27.9 | 10.2 | 22.0 |
| 09 ^{4th} -10 ^{4th} | 29.7 | 34.5 | 31.4 | -96.7 | -98.0 | -97.1 | 11.9 | 17.5 | 0.7 | 12.7 | 18.5 | 8.3 | 15.4 | 15.1 | 10.6 | 13.7 |
| 10 ^{1st} -11 ^{1st} | 13.6 | 4.2 | 9.8 | 26.2 | -2.9 | 15.0 | 11.6 | 30.9 | -4.7 | 19.5 | 27.5 | 4.7 | 21.6 | 25.2 | 2.1 | 18.0 |
| 10 ^{4th} -11 ^{1st} | -57.3 | -53.3 | -55.9 | 5238.5 | 8200.0 | 5935.3 | -32.5 | 24.8 | 27.5 | 25.4 | 5.5 | -25.0 | -3.3 | -6.7 | -23.8 | -12.1 |
| 11 ^{1st} -11 ^{2nd} | 34.9 | 21.5 | 29.8 | -11.4 | -12.0 | -11.6 | 15.4 | -32.3 | -28.7 | -31.4 | 2.5 | 25.0 | 7.5 | 1.3 | 11.7 | 4.1 |
| 11 ^{2nd} -11 ^{3rd} | 7.2 | -16.0 | -1.0 | 4.4 | -3.4 | 1.9 | -0.3 | 29.9 | 6.6 | 23.7 | 11.1 | 20.0 | 13.4 | 11.5 | 5.3 | 9.7 |
| 11 ^{3rd} -11 ^{4th} | 92.1 | 138.8 | 106.2 | -99.4 | -99.3 | -99.4 | 50.0 | -13.4 | -2.5 | -11.0 | -4.0 | 0.6 | -2.7 | 8.1 | 24.9 | 12.8 |

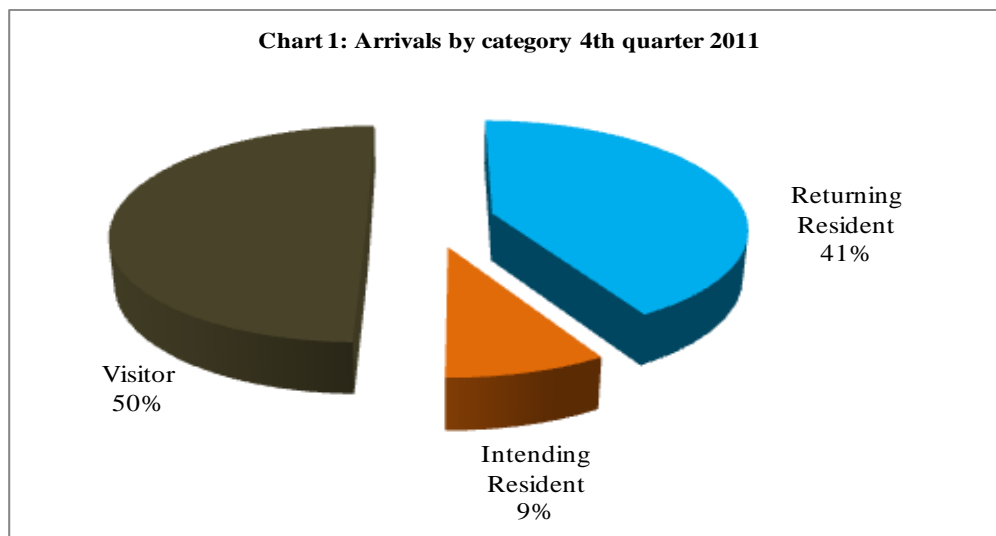


Table 2: Visitor Arrivals by Country of Residence by year by quarter: 4th Quarter 2011

| Country of Usual Residence | 2007 | | 2008 | | | | | 2009 | | | | | 2010 | | | | | 2011 | | | | |
|----------------------------|--------------|---------------|--------------|--------------|--------------|--------------|---------------|--------------|--------------|--------------|--------------|---------------|--------------|--------------|--------------|--------------|---------------|--------------|--------------|--------------|--------------|---------------|
| | Q4 | Total | Q1 | Q2 | Q3 | Q4 | Total | Q1 | Q2 | Q3 | Q4 | Total | Q1 | Q2 | Q3 | Q4 | Total | Q1 | Q2 | Q3 | Q4 | Total |
| Australia | 1574 | 5960 | 1291 | 1971 | 2184 | 1967 | 7413 | 1952 | 2361 | 2354 | 2235 | 8902 | 2087 | 2544 | 3362 | 2758 | 10751 | 2569 | 2763 | 3042 | 3018 | 11392 |
| PNG | 333 | 1,007 | 181 | 243 | 234 | 248 | 906 | 254 | 260 | 228 | 356 | 1,098 | 305 | 248 | 339 | 469 | 1,361 | 443 | 479 | 589 | 546 | 2,057 |
| US | 275 | 953 | 198 | 279 | 336 | 292 | 1,105 | 177 | 263 | 345 | 249 | 1,034 | 127 | 236 | 287 | 212 | 862 | 188 | 243 | 368 | 241 | 1,040 |
| NZ | 214 | 987 | 166 | 256 | 318 | 357 | 1,097 | 363 | 324 | 379 | 298 | 1,364 | 274 | 335 | 647 | 454 | 1,710 | 385 | 433 | 479 | 427 | 1,724 |
| UK | 53 | 318 | 62 | 94 | 137 | 164 | 457 | 112 | 111 | 121 | 75 | 419 | 82 | 108 | 141 | 101 | 432 | 78 | 110 | 101 | 91 | 380 |
| Japan | 143 | 572 | 144 | 92 | 172 | 181 | 589 | 192 | 142 | 159 | 380 | 873 | 166 | 95 | 151 | 177 | 589 | 145 | 106 | 229 | 161 | 641 |
| Germany | 18 | 87 | 19 | 14 | 38 | 53 | 124 | 37 | 15 | 25 | 23 | 100 | 24 | 33 | 26 | 18 | 101 | 22 | 26 | 38 | 25 | 111 |
| Canada | 31 | 95 | 19 | 24 | 29 | 43 | 115 | 23 | 20 | 21 | 24 | 88 | 32 | 22 | 25 | 34 | 113 | 51 | 30 | 55 | 56 | 192 |
| Oth.Pacific | 163 | 593 | 165 | 417 | 242 | 332 | 1,156 | 312 | 213 | 281 | 144 | 950 | 167 | 125 | 123 | 170 | 585 | 185 | 185 | 170 | 223 | 763 |
| Vanuatu | 189 | 524 | 120 | 119 | 137 | 142 | 518 | 86 | 72 | 65 | 85 | 308 | 48 | 86 | 126 | 145 | 405 | 125 | 103 | 100 | 185 | 513 |
| Hong Kong | - | 11 | 34 | 6 | 15 | 2 | 57 | 3 | 9 | 5 | - | 17 | 10 | 0 | 23 | 5 | 38 | 12 | 12 | 22 | 84 | 130 |
| Fiji | 183 | 710 | 161 | 203 | 239 | 184 | 787 | 225 | 257 | 247 | 188 | 917 | 206 | 278 | 273 | 234 | 991 | 262 | 327 | 285 | 330 | 1,204 |
| Other Asia | 309 | 1,264 | 303 | 356 | 296 | 294 | 1,249 | 319 | 447 | 326 | 317 | 1,409 | 503 | 477 | 509 | 336 | 1,825 | 487 | 523 | 562 | 484 | 2,056 |
| Netherlands | 15 | 125 | 6 | 5 | 7 | 19 | 37 | 14 | 12 | 10 | 15 | 51 | 11 | 9 | 16 | 17 | 53 | 18 | 13 | 20 | 13 | 64 |
| Oth.Europe | 74 | 284 | 74 | 79 | 128 | 105 | 386 | 126 | 57 | 100 | 91 | 374 | 78 | 63 | 100 | 66 | 307 | 60 | 62 | 63 | 61 | 246 |
| France | 15 | 48 | 10 | 20 | 36 | 25 | 91 | 19 | 6 | 29 | 27 | 81 | 12 | 24 | 24 | 22 | 82 | 10 | 20 | 22 | 8 | 60 |
| Italy | 29 | 63 | 4 | 5 | 17 | 11 | 37 | 13 | 4 | 22 | 27 | 66 | 4 | 3 | 13 | 19 | 39 | 13 | 17 | 20 | 30 | 80 |
| Oth.Country | 39 | 147 | 16 | 18 | 53 | 53 | 140 | 46 | 43 | 65 | 55 | 209 | 74 | 68 | 77 | 58 | 277 | 66 | 53 | 79 | 90 | 288 |
| Total | 3,657 | 13,748 | 2,973 | 4,201 | 4,618 | 4,472 | 16,264 | 4,273 | 4,616 | 4,782 | 4,589 | 18,260 | 4,210 | 4,754 | 6,262 | 5,295 | 20,521 | 5,119 | 5,505 | 6,244 | 6,073 | 22,941 |
| Percentage | | | | | | | | | | | | | | | | | | | | | | |
| Australia | 43.0 | 43.4 | 43.4 | 46.9 | 47.3 | 44.0 | 45.6 | 45.7 | 51.1 | 49.2 | 48.7 | 48.8 | 49.6 | 53.5 | 53.7 | 52.1 | 52.4 | 50.2 | 50.2 | 48.7 | 49.7 | 49.7 |
| PNG | 9.1 | 7.3 | 6.1 | 5.8 | 5.1 | 5.5 | 5.6 | 5.9 | 5.6 | 4.8 | 7.8 | 6.0 | 7.2 | 5.2 | 5.4 | 8.9 | 6.6 | 8.7 | 8.7 | 9.4 | 9.0 | 9.0 |
| US | 7.5 | 6.9 | 6.7 | 6.6 | 7.3 | 6.5 | 6.8 | 4.1 | 5.7 | 7.2 | 5.4 | 5.7 | 3.0 | 5.0 | 4.6 | 4.0 | 4.2 | 3.7 | 4.4 | 5.9 | 4.0 | 4.5 |
| NZ | 5.9 | 7.2 | 5.6 | 6.1 | 6.9 | 8.0 | 6.7 | 8.5 | 7.0 | 7.9 | 6.5 | 7.5 | 6.5 | 7.0 | 10.3 | 8.6 | 8.3 | 7.5 | 7.9 | 7.7 | 7.0 | 7.5 |
| UK | 1.4 | 2.3 | 2.1 | 2.2 | 3.0 | 3.7 | 2.8 | 2.6 | 2.4 | 2.5 | 1.6 | 2.3 | 1.9 | 2.3 | 2.3 | 1.9 | 2.1 | 1.5 | 2.0 | 1.6 | 1.5 | 1.7 |
| Japan | 3.9 | 4.2 | 4.8 | 2.2 | 3.7 | 4.0 | 3.6 | 4.5 | 3.1 | 3.3 | 8.3 | 4.8 | 3.9 | 2.0 | 2.4 | 3.3 | 2.9 | 2.8 | 1.9 | 3.7 | 2.7 | 2.8 |
| Germany | 0.5 | 0.6 | 0.6 | 0.3 | 0.8 | 1.2 | 0.8 | 0.9 | 0.3 | 0.5 | 0.5 | 0.5 | 0.6 | 0.7 | 0.4 | 0.3 | 0.5 | 0.4 | 0.5 | 0.6 | 0.4 | 0.5 |
| Canada | 0.8 | 0.7 | 0.6 | 0.6 | 0.6 | 1.0 | 0.7 | 0.5 | 0.4 | 0.4 | 0.5 | 0.5 | 0.8 | 0.5 | 0.4 | 0.6 | 0.6 | 1.0 | 0.5 | 0.9 | 0.9 | 0.8 |
| Oth.Pacific | 4.5 | 4.3 | 5.5 | 9.9 | 5.2 | 7.4 | 7.1 | 7.3 | 4.6 | 5.9 | 3.1 | 5.2 | 4.0 | 2.6 | 2.0 | 3.2 | 2.9 | 3.6 | 3.4 | 2.7 | 3.7 | 3.3 |
| Vanuatu | 5.2 | 3.8 | 4.0 | 2.8 | 3.0 | 3.2 | 3.2 | 2.0 | 1.6 | 1.4 | 1.9 | 1.7 | 1.1 | 1.8 | 2.0 | 2.7 | 2.0 | 2.4 | 1.9 | 1.6 | 3.0 | 2.2 |
| Hong Kong | - | 0.1 | 1.1 | 0.1 | 0.3 | 0.0 | 0.4 | 0.1 | 0.2 | 0.1 | 0.0 | 0.1 | 0.2 | - | 0.4 | 0.1 | 0.2 | 0.2 | 0.2 | 0.4 | 1.4 | 0.6 |
| Fiji | 5.0 | 5.2 | 5.4 | 4.8 | 5.2 | 4.1 | 4.8 | 5.3 | 5.6 | 5.2 | 4.1 | 5.0 | 4.9 | 5.8 | 4.4 | 4.4 | 4.8 | 5.1 | 5.9 | 4.6 | 5.4 | 5.2 |
| Other Asia | 8.4 | 9.2 | 10.2 | 8.5 | 6.4 | 6.6 | 7.7 | 7.5 | 9.7 | 6.8 | 6.9 | 7.7 | 11.9 | 10.0 | 8.1 | 6.3 | 8.9 | 9.5 | 9.5 | 9.0 | 8.0 | 9.0 |
| Netherlands | 0.4 | 0.9 | 0.2 | 0.1 | 0.2 | 0.4 | 0.2 | 0.3 | 0.3 | 0.2 | 0.3 | 0.3 | 0.3 | 0.2 | 0.3 | 0.3 | 0.3 | 0.4 | 0.2 | 0.3 | 0.2 | 0.3 |
| Oth.Europe | 2.0 | 2.1 | 2.5 | 1.9 | 2.8 | 2.3 | 2.4 | 2.9 | 1.2 | 2.1 | 2.0 | 2.0 | 1.9 | 1.3 | 1.6 | 1.2 | 1.5 | 1.2 | 1.1 | 1.0 | 1.0 | 1.1 |
| France | 0.4 | 0.3 | 0.3 | 0.5 | 0.8 | 0.6 | 0.6 | 0.4 | 0.1 | 0.6 | 0.6 | 0.4 | 0.3 | 0.5 | 0.4 | 0.4 | 0.4 | 0.2 | 0.4 | 0.4 | 0.1 | 0.3 |
| Italy | 0.8 | 0.5 | 0.1 | 0.1 | 0.4 | 0.2 | 0.2 | 0.3 | 0.1 | 0.5 | 0.6 | 0.4 | 0.1 | 0.1 | 0.2 | 0.4 | 0.2 | 0.3 | 0.3 | 0.3 | 0.5 | 0.3 |
| Oth.Country | 1.1 | 1.1 | 0.5 | 0.4 | 1.1 | 1.2 | 0.9 | 1.1 | 0.9 | 1.4 | 1.2 | 1.1 | 1.8 | 1.4 | 1.2 | 1.1 | 1.3 | 1.3 | 1.0 | 1.3 | 1.5 | 1.3 |
| Total | 100 | 100 | 100 | 100 | 100 | 100 | 100 | 100 | 100 | 100 | 100 | 100 | 100 | 100 | 100 | 100.0 | 100.0 | 100.0 | 100.0 | 100.0 | 100.0 | 100.0 |

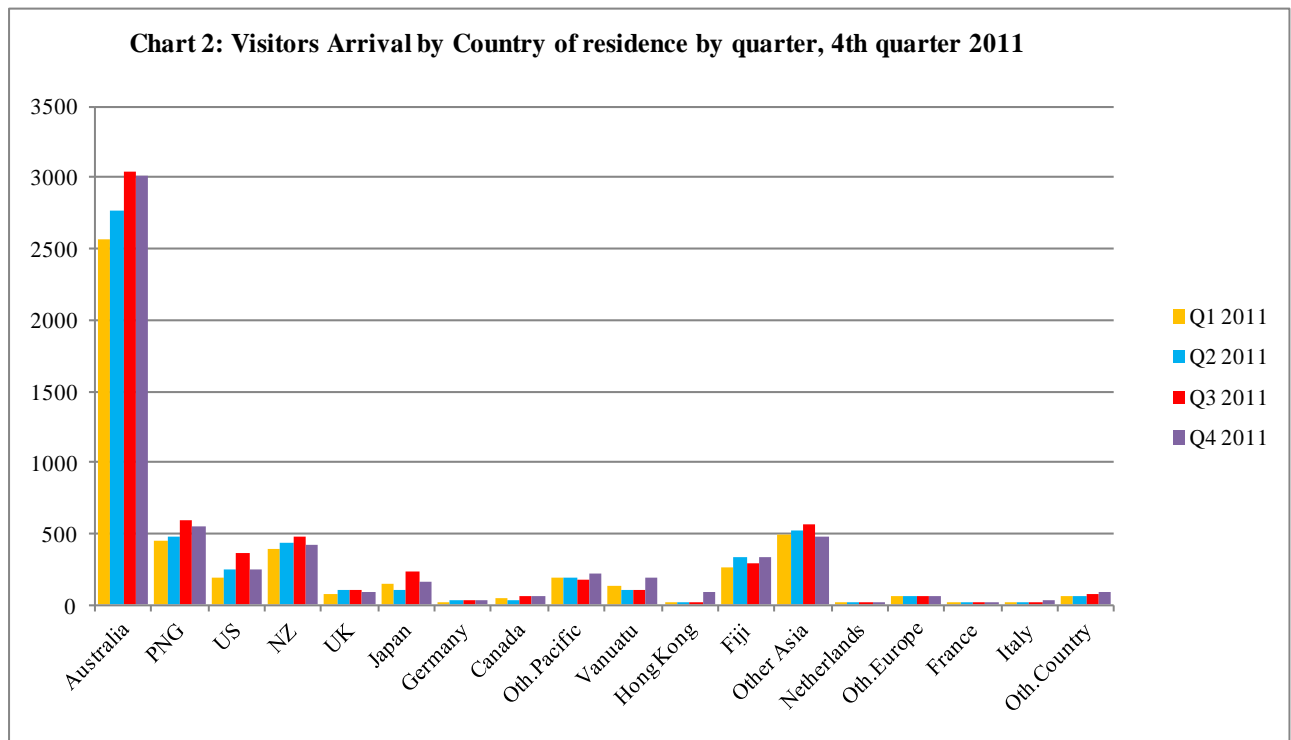


Table 3: Visitor Arrivals by Month: 2006 – 4th Quarter 2011

| Month | 2006 | 2007 | 2008 | 2009 | 2010 | 2011 |
|--------------|---------------|---------------|---------------|---------------|---------------|---------------|
| January | 952 | 546 | 889 | 1,602 | 1,235 | 1,600 |
| February | 838 | 1,020 | 1,282 | 1,422 | 1,209 | 1,658 |
| March | 972 | 1,251 | 802 | 1,249 | 1,766 | 1,861 |
| April | 994 | 1,452 | 1,388 | 1,499 | 1,820 | 1,736 |
| May | 858 | 1,137 | 1,261 | 1,393 | 1,137 | 1,760 |
| June | 1,289 | 1,265 | 1,552 | 1,724 | 1,797 | 2,009 |
| July | 865 | 822 | 1,692 | 1,603 | 2,264 | 2,185 |
| August | 892 | 1,299 | 1,469 | 1,520 | 1,845 | 1,900 |
| September | 681 | 1,299 | 1,457 | 1,659 | 2,153 | 2,159 |
| October | 942 | 1,260 | 1,399 | 1,709 | 1,813 | 1,931 |
| November | 1,118 | 1,246 | 1,545 | 1,475 | 1,624 | 2,195 |
| December | 1,081 | 1,151 | 1,528 | 1,405 | 1,858 | 1,947 |
| Total | 11,482 | 13,748 | 16,264 | 18,260 | 22,531 | 22,941 |
| Percentage | | | | | | |
| January | 8.3 | 4.0 | 5.5 | 8.8 | 5.5 | 7.0 |
| February | 7.3 | 7.4 | 7.9 | 7.8 | 5.4 | 7.2 |
| March | 8.5 | 9.1 | 4.9 | 6.8 | 7.8 | 8.1 |
| April | 8.7 | 10.6 | 8.5 | 8.2 | 8.1 | 7.6 |
| May | 7.5 | 8.3 | 7.8 | 7.6 | 5.0 | 7.7 |
| June | 11.2 | 9.2 | 9.5 | 9.4 | 8.0 | 8.8 |
| July | 7.5 | 6.0 | 10.4 | 8.8 | 10.0 | 9.5 |
| August | 7.8 | 9.4 | 9.0 | 8.3 | 8.2 | 8.3 |
| September | 5.9 | 9.4 | 9.0 | 9.1 | 9.6 | 9.4 |
| October | 8.2 | 9.2 | 8.6 | 9.4 | 8.0 | 8.4 |
| November | 9.7 | 9.1 | 9.5 | 8.1 | 7.2 | 9.6 |
| December | 9.4 | 8.4 | 9.4 | 7.7 | 8.2 | 8.5 |
| Total | 100 | 100.0 | 100.0 | 100.0 | 100.0 | 100.0 |

Chart 3: Visitors Arrival by month, 2007 - 4th quarter 2011

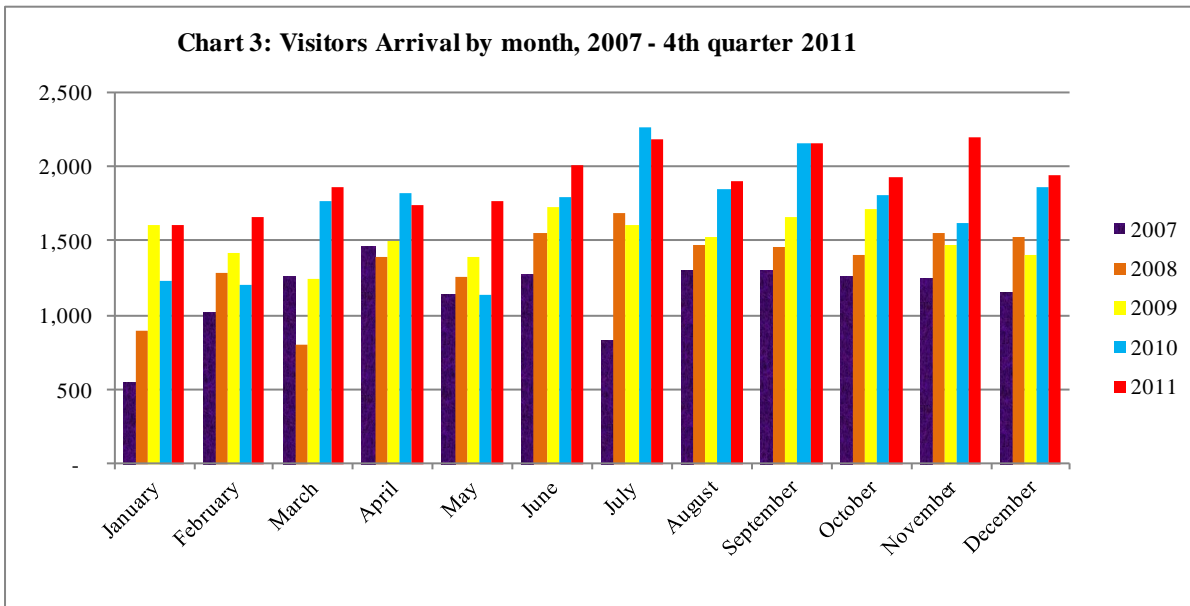


Table 4: Visitors, classified as tourists by Country of residence by year, quarter and average length of stay: 2009 – 4th Quarter 2011

| Country of Usual Residence | 2009 | | | | | | | | 2010 | | | | | | | | 2011 | | | | | | | |
|----------------------------|--------------|-----------|--------------|-----------|--------------|-----------|--------------|-----------|------------|-----------|--------------|-----------|--------------|-----------|--------------|-----------|--------------|-----------|--------------|-----------|-------------|-----------|-------------|-----------|
| | Quarter 1 | | Quarter 2 | | Quarter 3 | | Quarter 4 | | Quarter 1 | | Quarter 2 | | Quarter 3 | | Quarter 4 | | Quarter 1 | | Quarter 2 | | Quarter 3 | | Quarter 4 | |
| | tourist | day | tourist | day | tourist | day | tourist | day | tourist | day | tourist | day | tourist | day | tourist | day | tourist | day | tourist | day | tourist | day | tourist | day |
| Australia | 546 | 12 | 768 | 13 | 878 | 14 | 724 | 15 | 558 | 13 | 756 | 11 | 1,010 | 12 | 854 | 15 | 611 | 14 | 872 | 13 | 1034 | 15 | 915 | 20 |
| PNG | 24 | 13 | 36 | 11 | 35 | 13 | 62 | 33 | 46 | 22 | 41 | 11 | 36 | 15 | 60 | 27 | 34 | 13 | 53 | 15 | 72 | 16 | 67 | 30 |
| US | 75 | 10 | 95 | 16 | 163 | 13 | 141 | 14 | 46 | 16 | 122 | 11 | 166 | 12 | 114 | 13 | 91 | 11 | 104 | 16 | 191 | 13 | 102 | 13 |
| NZ | 33 | 14 | 41 | 14 | 99 | 17 | 41 | 23 | 17 | 18 | 62 | 14 | 140 | 14 | 65 | 19 | 29 | 23 | 56 | 15 | 102 | 17 | 70 | 20 |
| UK | 44 | 16 | 38 | 27 | 52 | 28 | 37 | 25 | 24 | 18 | 48 | 19 | 72 | 23 | 54 | 13 | 26 | 19 | 49 | 25 | 42 | 23 | 34 | 16 |
| Japan | 61 | 7 | 56 | 7 | 84 | 11 | 286 | 5 | 45 | 8 | 23 | 5 | 56 | 12 | 94 | 6 | 45 | 12 | 24 | 10 | 95 | 15 | 51 | 7 |
| Germany | 21 | 26 | 6 | 9 | 15 | 14 | 18 | 27 | 17 | 16 | 23 | 13 | 13 | 17 | 13 | 14 | 15 | 35 | 12 | 13 | 24 | 17 | 17 | 12 |
| Canada | 5 | 25 | 6 | 24 | 9 | 29 | 11 | 13 | 14 | 18 | 8 | 33 | 7 | 12 | 11 | 14 | 27 | 17 | 8 | 23 | 14 | 14 | 28 | 15 |
| Oth.Pacific | 68 | 10 | 17 | 8 | 84 | 14 | 29 | 18 | 22 | 16 | 8 | 7 | 16 | 12 | 23 | 27 | 19 | 15 | 14 | 12 | 15 | 16 | 21 | 23 |
| Vanuatu | 1 | 10 | 7 | 13 | - | - | - | 10 | 4 | 9 | 9 | 15 | 10 | 18 | 12 | 14 | 20 | 15 | 13 | 14 | 20 | 17 | 27 | 25 |
| Hong Kong | - | - | 6 | 12 | - | - | - | 20 | 3 | 15 | - | - | 8 | 10 | 2 | 3 | 5 | 5 | 7 | 8 | 11 | 12 | 23 | 19 |
| Fiji | 6 | 16 | 13 | 7 | 8 | 7 | 19 | - | 9 | 23 | 10 | 25 | 15 | 31 | 21 | 29 | 15 | 13 | 23 | 18 | 26 | 20 | 20 | 21 |
| Oth.Asia | 61 | 17 | 88 | 24 | 78 | 22 | 61 | 30 | 78 | 20 | 106 | 19 | 126 | 13 | 107 | 23 | 127 | 20 | 103 | 25 | 142 | 22 | 81 | 16 |
| Netherlands | 4 | 20 | 6 | 44 | 6 | 18 | 10 | 15 | 5 | 8 | 4 | 15 | 6 | 15 | 5 | 7 | 6 | 34 | 5 | 18 | 9 | 20 | 10 | 20 |
| Oth.Europe | 74 | 11 | 18 | 22 | 50 | 12 | 53 | 19 | 48 | 22 | 33 | 17 | 72 | 16 | 34 | 16 | 35 | 18 | 32 | 14 | 37 | 18 | 26 | 18 |
| France | 14 | 11 | 2 | 17 | 11 | 19 | 16 | 14 | 6 | 12 | 13 | 23 | 9 | 16 | 8 | 21 | 4 | 28 | 5 | 17 | 15 | 20 | 4 | 12 |
| Italy | 5 | 28 | 2 | 12 | 19 | 14 | 15 | 43 | 2 | 12 | 1 | 8 | 11 | 17 | 5 | 52 | 5 | 22 | 5 | 10 | 6 | 18 | 18 | 19 |
| Oth.Country | 5 | 5 | 12 | 20 | 23 | 12 | 12 | 11 | 21 | 22 | 15 | 9 | 24 | 14 | 14 | 18 | 23 | 12 | 14 | 21 | 26 | 16 | 44 | 16 |
| Total | 1,047 | 13 | 1,217 | 15 | 1,614 | 15 | 1,550 | 15 | 965 | 15 | 1,282 | 12 | 1,797 | 13 | 1,496 | 18 | 1,137 | 16 | 1,399 | 15 | 1881 | 16 | 1558 | 15 |

Chart 4: Tourist Arrivals by Country of Residence, 4th Quarter 2011

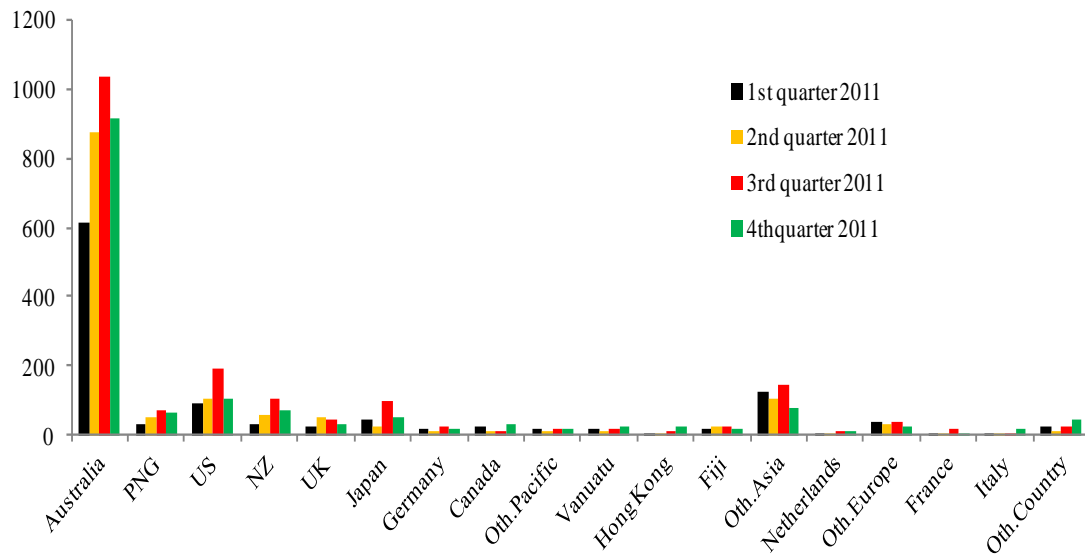


Table 5: Visitor Arrivals by Country of Residence by Purpose of Visit by sex: 4th Quarter 2011

| Country of Usual Residence | Business & Conference | | | Holiday & Vocation | | | Transit & Stopover | | | Visit friends/Relatives | | | Other | | | Total | | |
|----------------------------|-----------------------|------------|--------------|--------------------|------------|--------------|--------------------|------------|------------|-------------------------|------------|-------------|--------------|------------|--------------|--------------|--------------|--------------|
| | M | F | T | M | F | T | M | F | T | M | F | T | M | F | T | M | F | All |
| Australia | 677 | 202 | 879 | 535 | 368 | 903 | 9 | 3 | 12 | 202 | 188 | 390 | 641 | 193 | 834 | 2,064 | 954 | 3,018 |
| PNG | 150 | 47 | 197 | 36 | 24 | 60 | 6 | 1 | 7 | 43 | 23 | 66 | 192 | 24 | 216 | 427 | 119 | 546 |
| US | 52 | 23 | 75 | 55 | 43 | 98 | 4 | - | 4 | 12 | 7 | 19 | 36 | 9 | 45 | 159 | 82 | 241 |
| NZ | 126 | 24 | 150 | 47 | 23 | 70 | - | - | - | 39 | 27 | 66 | 109 | 32 | 141 | 321 | 106 | 427 |
| UK | 22 | 6 | 28 | 17 | 15 | 32 | 2 | - | 2 | 3 | 4 | 7 | 15 | 7 | 22 | 59 | 32 | 91 |
| Japan | 64 | 12 | 76 | 33 | 17 | 50 | - | 1 | 1 | 6 | 4 | 10 | 21 | 3 | 24 | 124 | 37 | 161 |
| Germany | 4 | - | 4 | 9 | 8 | 17 | - | - | - | - | 2 | 2 | 2 | - | 2 | 15 | 10 | 25 |
| Canada | 7 | 6 | 13 | 17 | 11 | 28 | - | - | - | 4 | 2 | 6 | 6 | 3 | 9 | 34 | 22 | 56 |
| Oth.Pacific | 89 | 30 | 119 | 10 | 10 | 20 | 1 | - | 1 | 7 | 13 | 20 | 39 | 24 | 63 | 146 | 77 | 223 |
| Vanuatu | 65 | 31 | 96 | 12 | 10 | 22 | 3 | 2 | 5 | 9 | 4 | 13 | 35 | 14 | 49 | 124 | 61 | 185 |
| Hong Kong | 27 | 6 | 33 | 16 | 7 | 23 | - | - | - | 6 | 4 | 10 | 16 | 2 | 18 | 65 | 19 | 84 |
| Fiji | 120 | 53 | 173 | 8 | 12 | 20 | - | - | - | 29 | 7 | 36 | 82 | 19 | 101 | 239 | 91 | 330 |
| Oth.Asia | 194 | 27 | 221 | 59 | 13 | 72 | 9 | - | 9 | 47 | 4 | 51 | 116 | 15 | 131 | 425 | 59 | 484 |
| Netherlands | 1 | - | 1 | 7 | 3 | 10 | - | - | - | 1 | 1 | 2 | - | - | - | 9 | 4 | 13 |
| Oth.Europe | 15 | 4 | 19 | 15 | 10 | 25 | 1 | - | 1 | 2 | 3 | 5 | 10 | 1 | 11 | 43 | 18 | 61 |
| France | 1 | 1 | 2 | 3 | 1 | 4 | - | - | - | - | - | - | 2 | - | 2 | 6 | 2 | 8 |
| Italy | 4 | 3 | 7 | 12 | 6 | 18 | - | - | - | 2 | 1 | 3 | 1 | 1 | 2 | 19 | 11 | 30 |
| Oth.Country | 16 | 11 | 27 | 25 | 14 | 39 | 5 | - | 5 | 1 | 1 | 2 | 15 | 2 | 17 | 62 | 28 | 90 |
| Total | 1,634 | 486 | 2,120 | 916 | 595 | 1,511 | 40 | 7 | 47 | 413 | 295 | 708 | 1,338 | 349 | 1,687 | 4,341 | 1,732 | 6,073 |
| Percentage | | | | | | | | | | | | | | | | | | |
| Australia | 22.4 | 6.7 | 29.1 | 17.7 | 12.2 | 29.9 | 0.3 | 0.1 | 0.4 | 6.7 | 6.2 | 12.9 | 21.2 | 6.4 | 27.6 | 68.4 | 31.6 | 100.0 |
| PNG | 27.5 | 8.6 | 36.1 | 6.6 | 4.4 | 11.0 | 1.1 | 0.2 | 1.3 | 7.9 | 4.2 | 12.1 | 35.2 | 4.4 | 39.6 | 78.2 | 21.8 | 100.0 |
| US | 21.6 | 9.5 | 31.1 | 22.8 | 17.8 | 40.7 | 1.7 | - | 1.7 | 5.0 | 2.9 | 7.9 | 14.9 | 3.7 | 18.7 | 66.0 | 34.0 | 100.0 |
| NZ | 29.5 | 5.6 | 35.1 | 11.0 | 5.4 | 16.4 | - | - | - | 9.1 | 6.3 | 15.5 | 25.5 | 7.5 | 33.0 | 75.2 | 24.8 | 100.0 |
| UK | 24.2 | 6.6 | 30.8 | 18.7 | 16.5 | 35.2 | 2.2 | - | 2.2 | 3.3 | 4.4 | 7.7 | 16.5 | 7.7 | 24.2 | 64.8 | 35.2 | 100.0 |
| Japan | 39.8 | 7.5 | 47.2 | 20.5 | 10.6 | 31.1 | - | 0.6 | 0.6 | 3.7 | 2.5 | 6.2 | 13.0 | 1.9 | 14.9 | 77.0 | 23.0 | 100.0 |
| Germany | 16.0 | - | 16.0 | 36.0 | 32.0 | 68.0 | - | - | - | - | 8.0 | 8.0 | 8.0 | - | 8.0 | 60.0 | 40.0 | 100.0 |
| Canada | 12.5 | 10.7 | 23.2 | 30.4 | 19.6 | 50.0 | - | - | - | 7.1 | 3.6 | 10.7 | 10.7 | 5.4 | 16.1 | 60.7 | 39.3 | 100.0 |
| Oth.Pacific | 39.9 | 13.5 | 53.4 | 4.5 | 4.5 | 9.0 | 0.4 | - | 0.4 | 3.1 | 5.8 | 9.0 | 17.5 | 10.8 | 28.3 | 65.5 | 34.5 | 100.0 |
| Vanuatu | 35.1 | 16.8 | 51.9 | 6.5 | 5.4 | 11.9 | 1.6 | 1.1 | 2.7 | 4.9 | 2.2 | 7.0 | 18.9 | 7.6 | 26.5 | 67.0 | 33.0 | 100.0 |
| Hong Kong | 32.1 | 7.1 | 39.3 | 19.0 | 8.3 | 27.4 | - | - | - | 7.1 | 4.8 | 11.9 | 19.0 | 2.4 | 21.4 | 77.4 | 22.6 | 100.0 |
| Fiji | 36.4 | 16.1 | 52.4 | 2.4 | 3.6 | 6.1 | - | - | - | 8.8 | 2.1 | 10.9 | 24.8 | 5.8 | 30.6 | 72.4 | 27.6 | 100.0 |
| Oth.Asia | 40.1 | 5.6 | 45.7 | 12.2 | 2.7 | 14.9 | 1.9 | - | 1.9 | 9.7 | 0.8 | 10.5 | 24.0 | 3.1 | 27.1 | 87.8 | 12.2 | 100.0 |
| Netherlands | 7.7 | - | 7.7 | 53.8 | 23.1 | 76.9 | - | - | - | 7.7 | 7.7 | 15.4 | - | - | - | 69.2 | 30.8 | 100.0 |
| Oth.Europe | 24.6 | 6.6 | 31.1 | 24.6 | 16.4 | 41.0 | 1.6 | - | 1.6 | 3.3 | 4.9 | 8.2 | 16.4 | 1.6 | 18.0 | 70.5 | 29.5 | 100.0 |
| France | 12.5 | 12.5 | 25.0 | 37.5 | 12.5 | 50.0 | - | - | - | - | - | - | 25.0 | - | 25.0 | 75.0 | 25.0 | 100.0 |
| Italy | 13.3 | 10.0 | 23.3 | 40.0 | 20.0 | 60.0 | - | - | - | 6.7 | 3.3 | 10.0 | 3.3 | 3.3 | 6.7 | 63.3 | 36.7 | 100.0 |
| Oth.Country | 17.8 | 12.2 | 30.0 | 27.8 | 15.6 | 43.3 | 5.6 | - | 5.6 | 1.1 | 1.1 | 2.2 | 16.7 | 2.2 | 18.9 | 68.9 | 31.1 | 100.0 |
| Total | 26.9 | 8.0 | 34.9 | 15.1 | 9.8 | 24.9 | 0.7 | 0.1 | 0.8 | 6.8 | 4.9 | 11.7 | 22.0 | 5.7 | 27.8 | 71.5 | 28.5 | 100.0 |

Chart 5: Visitors Arrival by Country of Residence by Purpose of Visit, 4th quarter 2011

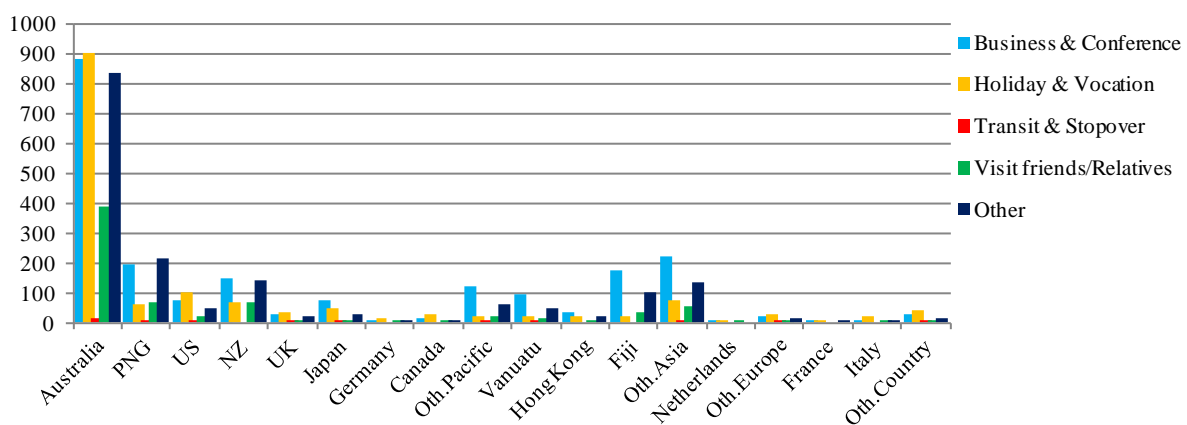


Table 6: Visitor Arrivals by Country of Residence by Age Groups by Sex: 4th Quarter 2011

| Country of Usual Residence | Age-Group | | | | | | | | | | | | | | | | Total | | | |
|----------------------------|-------------------|------------|------------|------------|-------------|------------|-------------|------------|-------------|------------|-------------|------------|------------|------------|------------|------------|--------------|--------------|--------------|--|
| | 0-14 | | 15-24 | | 25-34 | | 35-44 | | 45-54 | | 55-64 | | 65+ | | Not Stated | | M | F | All | |
| | M | F | M | F | M | F | M | F | M | F | M | F | M | F | M | F | M | F | All | |
| Australia | 53 | 52 | 137 | 154 | 354 | 213 | 532 | 163 | 443 | 170 | 347 | 119 | 134 | 36 | 64 | 47 | 2,064 | 954 | 3,018 | |
| PNG | 18 | 21 | 18 | 15 | 92 | 30 | 113 | 23 | 110 | 15 | 42 | 8 | 5 | - | 29 | 7 | 427 | 119 | 546 | |
| US | 1 | 1 | 5 | 7 | 19 | 10 | 33 | 10 | 25 | 19 | 50 | 23 | 20 | 10 | 6 | 2 | 159 | 82 | 241 | |
| NZ | 14 | 12 | 28 | 10 | 56 | 17 | 64 | 21 | 77 | 23 | 55 | 16 | 21 | 4 | 6 | 3 | 321 | 106 | 427 | |
| UK | - | - | 5 | 7 | 9 | 9 | 9 | 4 | 13 | 4 | 13 | 4 | 9 | 4 | 1 | - | 59 | 32 | 91 | |
| Japan | - | - | 2 | 3 | 11 | 5 | 27 | 7 | 33 | 3 | 21 | 2 | 26 | 15 | 4 | 2 | 124 | 37 | 161 | |
| Germany | - | - | - | 1 | 2 | 2 | 3 | 2 | 6 | 2 | 2 | 1 | 1 | 1 | 1 | 1 | 15 | 10 | 25 | |
| Canada | - | - | 2 | 2 | 4 | 3 | 7 | 3 | 4 | 2 | 11 | 5 | 4 | 3 | 2 | 4 | 34 | 22 | 56 | |
| Oth.Pacific | 6 | 10 | 13 | 19 | 12 | 19 | 46 | 16 | 43 | 3 | 12 | 7 | 5 | 1 | 9 | 2 | 146 | 77 | 223 | |
| Vanuatu | 7 | 4 | 10 | 4 | 19 | 19 | 31 | 12 | 34 | 13 | 12 | 6 | 3 | 1 | 8 | 2 | 124 | 61 | 185 | |
| Hong Kong | - | - | 2 | 2 | 18 | 8 | 21 | 1 | 13 | 6 | 4 | - | 3 | 1 | 4 | 1 | 65 | 19 | 84 | |
| Fiji | 3 | 3 | 12 | 12 | 45 | 16 | 68 | 23 | 69 | 30 | 25 | 6 | 6 | 1 | 11 | - | 239 | 91 | 330 | |
| Oth.Asia | 6 | 3 | 29 | 7 | 81 | 20 | 116 | 13 | 112 | 9 | 66 | 4 | 8 | 2 | 7 | 1 | 425 | 59 | 484 | |
| Netherlands | - | - | - | - | 2 | - | 3 | 1 | 2 | 1 | 1 | 1 | 1 | - | - | 1 | 9 | 4 | 13 | |
| Oth.Europe | - | 1 | 2 | 2 | 9 | 5 | 10 | 5 | 8 | 2 | 8 | 1 | 3 | 2 | 3 | - | 43 | 18 | 61 | |
| France | - | - | - | - | 1 | 1 | 2 | - | 2 | - | - | 1 | 1 | - | - | - | 6 | 2 | 8 | |
| Italy | - | - | 1 | 1 | 1 | 1 | 3 | 1 | 2 | 4 | 9 | 2 | 2 | 2 | 1 | - | 19 | 11 | 30 | |
| Oth.Country | 2 | 1 | 2 | 2 | 3 | 7 | 15 | 5 | 27 | 5 | 7 | 5 | 6 | 2 | - | 1 | 62 | 28 | 90 | |
| Total | 110 | 108 | 268 | 248 | 738 | 385 | 1103 | 310 | 1023 | 311 | 685 | 211 | 258 | 85 | 156 | 74 | 4,341 | 1,732 | 6,073 | |
| | Percentage | | | | | | | | | | | | | | | | | | | |
| Australia | 1.8 | 1.7 | 4.5 | 5.1 | 11.7 | 7.1 | 17.6 | 5.4 | 14.7 | 5.6 | 11.5 | 3.9 | 4.4 | 1.2 | 2.1 | 1.6 | 68.4 | 31.6 | 100.0 | |
| PNG | 3.3 | 3.8 | 3.3 | 2.7 | 16.8 | 5.5 | 20.7 | 4.2 | 20.1 | 2.7 | 7.7 | 1.5 | 0.9 | - | 5.3 | 1.3 | 78.2 | 21.8 | 100.0 | |
| US | 0.4 | 0.4 | 2.1 | 2.9 | 7.9 | 4.1 | 13.7 | 4.1 | 10.4 | 7.9 | 20.7 | 9.5 | 8.3 | 4.1 | 2.5 | 0.8 | 66.0 | 34.0 | 100.0 | |
| NZ | 3.3 | 2.8 | 6.6 | 2.3 | 13.1 | 4.0 | 15.0 | 4.9 | 18.0 | 5.4 | 12.9 | 3.7 | 4.9 | 0.9 | 1.4 | 0.7 | 75.2 | 24.8 | 100.0 | |
| UK | - | - | 5.5 | 7.7 | 9.9 | 9.9 | 9.9 | 4.4 | 14.3 | 4.4 | 14.3 | 4.4 | 9.9 | 4.4 | 1.1 | - | 64.8 | 35.2 | 100.0 | |
| Japan | - | - | 1.2 | 1.9 | 6.8 | 3.1 | 16.8 | 4.3 | 20.5 | 1.9 | 13.0 | 1.2 | 16.1 | 9.3 | 2.5 | 1.2 | 77.0 | 23.0 | 100.0 | |
| Germany | - | - | - | 4.0 | 8.0 | 8.0 | 12.0 | 8.0 | 24.0 | 8.0 | 8.0 | 4.0 | 4.0 | 4.0 | 4.0 | 4.0 | 60.0 | 40.0 | 100.0 | |
| Canada | - | - | 3.6 | 3.6 | 7.1 | 5.4 | 12.5 | 5.4 | 7.1 | 3.6 | 19.6 | 8.9 | 7.1 | 5.4 | 3.6 | 7.1 | 60.7 | 39.3 | 100.0 | |
| Oth.Pacific | 2.7 | 4.5 | 5.8 | 8.5 | 5.4 | 8.5 | 20.6 | 7.2 | 19.3 | 1.3 | 5.4 | 3.1 | 2.2 | 0.4 | 4.0 | 0.9 | 65.5 | 34.5 | 100.0 | |
| Vanuatu | 3.8 | 2.2 | 5.4 | 2.2 | 10.3 | 10.3 | 16.8 | 6.5 | 18.4 | 7.0 | 6.5 | 3.2 | 1.6 | 0.5 | 4.3 | 1.1 | 67.0 | 33.0 | 100.0 | |
| Hong Kong | - | - | 2.4 | 2.4 | 21.4 | 9.5 | 25.0 | 1.2 | 15.5 | 7.1 | 4.8 | - | 3.6 | 1.2 | 4.8 | 1.2 | 77.4 | 22.6 | 100.0 | |
| Fiji | 0.9 | 0.9 | 3.6 | 3.6 | 13.6 | 4.8 | 20.6 | 7.0 | 20.9 | 9.1 | 7.6 | 1.8 | 1.8 | 0.3 | 3.3 | - | 72.4 | 27.6 | 100.0 | |
| Oth.Asia | 1.2 | 0.6 | 6.0 | 1.4 | 16.7 | 4.1 | 24.0 | 2.7 | 23.1 | 1.9 | 13.6 | 0.8 | 1.7 | 0.4 | 1.4 | 0.2 | 87.8 | 12.2 | 100.0 | |
| Netherlands | - | - | - | - | 15.4 | - | 23.1 | 7.7 | 15.4 | 7.7 | 7.7 | 7.7 | 7.7 | - | - | 7.7 | 69.2 | 30.8 | 100.0 | |
| Oth.Europe | - | 1.6 | 3.3 | 3.3 | 14.8 | 8.2 | 16.4 | 8.2 | 13.1 | 3.3 | 13.1 | 1.6 | 4.9 | 3.3 | 4.9 | - | 70.5 | 29.5 | 100.0 | |
| France | - | - | - | - | 12.5 | 12.5 | 25.0 | - | 25.0 | - | - | 12.5 | 12.5 | - | - | - | 75.0 | 25.0 | 100.0 | |
| Italy | - | - | 3.3 | 3.3 | 3.3 | 3.3 | 10.0 | 3.3 | 6.7 | 13.3 | 30.0 | 6.7 | 6.7 | 6.7 | 3.3 | - | 63.3 | 36.7 | 100.0 | |
| Oth.Country | 2.2 | 1.1 | 2.2 | 2.2 | 3.3 | 7.8 | 16.7 | 5.6 | 30.0 | 5.6 | 7.8 | 5.6 | 6.7 | 2.2 | - | 1.1 | 68.9 | 31.1 | 100.0 | |
| Total | 1.8 | 1.8 | 4.4 | 4.1 | 12.2 | 6.3 | 18.2 | 5.1 | 16.8 | 5.1 | 11.3 | 3.5 | 4.2 | 1.4 | 2.6 | 1.2 | 71.5 | 28.5 | 100.0 | |

Chart 6: Visitor Arrivals by Age group category by sex, 4th quarter 2011

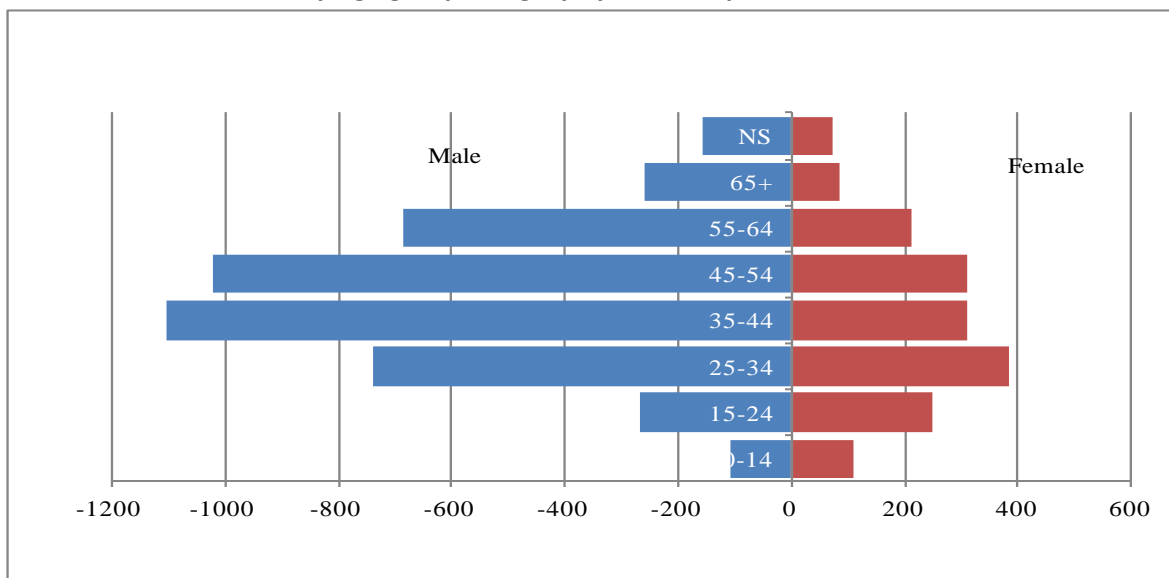


Table 7: Visitor Arrivals by Country of Residence by Occupation and Sex: 4th Quarter 2011

| Country of Usual Residence | Professional and Technical | | Administration and Managerial | | Clerical & Related Work | | Sales Worker | | Service Worker | | Agriculture Forestry Fishery | | Production & Related Work | | Other | | No Work | | Total | | |
|----------------------------|----------------------------|-------------|-------------------------------|------------|-------------------------|------------|--------------|------------|----------------|------------|------------------------------|------------|---------------------------|------------|-------------|------------|------------|------------|--------------|--------------|--------------|
| | M | F | M | F | M | F | M | F | M | F | M | F | M | F | M | F | M | F | M | F | All |
| Australia | 690 | 417 | 241 | 66 | 8 | 21 | 32 | 10 | 212 | 75 | 31 | - | 135 | 7 | 601 | 281 | 114 | 77 | 2,064 | 954 | 3,018 |
| PNG | 125 | 52 | 44 | 4 | - | - | 2 | - | 4 | 9 | 7 | - | 32 | 1 | 195 | 38 | 18 | 15 | 427 | 119 | 546 |
| US | 69 | 34 | 6 | 5 | - | - | 1 | - | - | 5 | 2 | - | 4 | 2 | 55 | 23 | 22 | 13 | 159 | 82 | 241 |
| NZ | 108 | 48 | 47 | 9 | 1 | 1 | 1 | - | 38 | 10 | 4 | 3 | 12 | 1 | 94 | 25 | 16 | 9 | 321 | 106 | 427 |
| UK | 23 | 11 | 9 | 5 | - | - | 2 | - | 2 | 1 | - | - | - | - | 20 | 11 | 3 | 4 | 59 | 32 | 91 |
| Japan | 36 | 8 | 11 | 1 | 2 | 2 | 3 | - | 1 | 5 | 6 | 1 | 1 | - | 49 | 14 | 15 | 6 | 124 | 37 | 161 |
| Germany | 6 | 4 | - | - | - | - | - | - | - | - | - | - | - | - | 8 | 5 | 1 | 1 | 15 | 10 | 25 |
| Canada | 16 | 2 | 2 | 2 | - | 2 | 2 | - | - | - | - | - | 3 | - | 4 | 12 | 7 | 4 | 34 | 22 | 56 |
| Oth.Pacific | 37 | 33 | 13 | - | 2 | 1 | - | - | 20 | 3 | - | - | 2 | - | 58 | 17 | 14 | 23 | 146 | 77 | 223 |
| Vanuatu | 62 | 18 | 2 | 4 | 3 | 4 | 2 | - | 5 | 9 | - | - | 4 | 1 | 37 | 23 | 9 | 2 | 124 | 61 | 185 |
| Hong Kong | 13 | 2 | 7 | 2 | - | - | - | 12 | 2 | 4 | - | 1 | 2 | 1 | 24 | 6 | 5 | 1 | 65 | 19 | 84 |
| Fiji | 75 | 35 | 28 | 7 | 4 | - | 1 | - | 18 | 5 | 30 | 2 | 5 | - | 69 | 38 | 9 | 4 | 239 | 91 | 330 |
| Oth.Asia | 64 | 26 | 57 | 7 | 5 | 2 | 49 | - | 4 | 7 | 10 | - | 31 | - | 168 | 12 | 37 | 5 | 425 | 59 | 484 |
| Netherlands | 2 | 1 | 1 | - | - | - | - | - | 1 | - | - | - | - | - | 4 | 2 | 1 | 1 | 9 | 4 | 13 |
| Oth.Europe | 14 | 9 | 5 | 2 | - | - | 2 | - | - | 2 | - | - | - | - | 17 | 1 | 5 | 4 | 43 | 18 | 61 |
| France | 1 | - | 1 | - | - | 1 | - | - | - | - | - | - | - | - | 3 | 1 | 1 | - | 6 | 2 | 8 |
| Italy | 6 | 4 | 3 | - | 1 | - | - | 1 | - | 2 | - | - | - | - | 9 | 4 | - | - | 19 | 11 | 30 |
| Oth.Country | 20 | 8 | 15 | 5 | - | 1 | - | - | - | 1 | 1 | - | 1 | - | 22 | 10 | 3 | 3 | 62 | 28 | 90 |
| Total | 1367 | 712 | 492 | 119 | 26 | 35 | 109 | 13 | 307 | 138 | 90 | 7 | 232 | 13 | 1437 | 523 | 280 | 172 | 4,341 | 1,732 | 6,073 |
| Percentage | | | | | | | | | | | | | | | | | | | | | |
| Australia | 22.9 | 13.8 | 8.0 | 2.2 | 0.3 | 0.7 | 1.1 | 0.3 | 7.0 | 2.5 | 1.0 | - | 4.5 | 0.2 | 19.9 | 9.3 | 3.8 | 2.6 | 68.4 | 31.6 | 100.0 |
| PNG | 22.9 | 9.5 | 8.1 | 0.7 | - | - | 0.4 | - | 0.7 | 1.6 | 1.3 | - | 5.9 | 0.2 | 35.7 | 7.0 | 3.3 | 2.7 | 78.2 | 21.8 | 100.0 |
| US | 28.6 | 14.1 | 2.5 | 2.1 | - | - | 0.4 | - | - | 2.1 | 0.8 | - | 1.7 | 0.8 | 22.8 | 9.5 | 9.1 | 5.4 | 66.0 | 34.0 | 100.0 |
| NZ | 25.3 | 11.2 | 11.0 | 2.1 | 0.2 | 0.2 | 0.2 | - | 8.9 | 2.3 | 0.9 | 0.7 | 2.8 | 0.2 | 22.0 | 5.9 | 3.7 | 2.1 | 75.2 | 24.8 | 100.0 |
| UK | 25.3 | 12.1 | 9.9 | 5.5 | - | - | 2.2 | - | 2.2 | 1.1 | - | - | - | - | 22.0 | 12.1 | 3.3 | 4.4 | 64.8 | 35.2 | 100.0 |
| Japan | 22.4 | 5.0 | 6.8 | 0.6 | 1.2 | 1.2 | 1.9 | - | 0.6 | 3.1 | 3.7 | 0.6 | 0.6 | - | 30.4 | 8.7 | 9.3 | 3.7 | 77.0 | 23.0 | 100.0 |
| Germany | 24.0 | 16.0 | - | - | - | - | - | - | - | - | - | - | - | - | 32.0 | 20.0 | 4.0 | 4.0 | 60.0 | 40.0 | 100.0 |
| Canada | 28.6 | 3.6 | 3.6 | 3.6 | - | 3.6 | 3.6 | - | - | - | - | - | 5.4 | - | 7.1 | 21.4 | 12.5 | 7.1 | 60.7 | 39.3 | 100.0 |
| Oth.Pacific | 16.6 | 14.8 | 5.8 | - | 0.9 | 0.4 | - | - | 9.0 | 1.3 | - | - | 0.9 | - | 26.0 | 7.6 | 6.3 | 10.3 | 65.5 | 34.5 | 100.0 |
| Vanuatu | 33.5 | 9.7 | 1.1 | 2.2 | 1.6 | 2.2 | 1.1 | - | 2.7 | 4.9 | - | - | 2.2 | 0.5 | 20.0 | 12.4 | 4.9 | 1.1 | 67.0 | 33.0 | 100.0 |
| Hong Kong | 15.5 | 2.4 | 8.3 | 2.4 | - | - | 14.3 | 2.4 | 2.4 | 4.8 | - | 1.2 | 2.4 | 1.2 | 28.6 | 7.1 | 6.0 | 1.2 | 77.4 | 22.6 | 100.0 |
| Fiji | 22.7 | 10.6 | 8.5 | 2.1 | 1.2 | - | 0.3 | - | 5.5 | 1.5 | 9.1 | 0.6 | 1.5 | - | 20.9 | 11.5 | 2.7 | 1.2 | 72.4 | 27.6 | 100.0 |
| Oth.Asia | 13.2 | 5.4 | 11.8 | 1.4 | 1.0 | 0.4 | 10.1 | - | 0.8 | 1.4 | 2.1 | - | 6.4 | - | 34.7 | 2.5 | 7.6 | 1.0 | 87.8 | 12.2 | 100.0 |
| Netherlands | 15.4 | 7.7 | 7.7 | - | - | - | - | - | 7.7 | - | - | - | - | - | 30.8 | 15.4 | 7.7 | 7.7 | 69.2 | 30.8 | 100.0 |
| Oth.Europe | 23.0 | 14.8 | 8.2 | 3.3 | - | - | 3.3 | - | - | 3.3 | - | - | - | - | 27.9 | 1.6 | 8.2 | 6.6 | 70.5 | 29.5 | 100.0 |
| France | 12.5 | - | 12.5 | - | - | 12.5 | - | - | - | - | - | - | - | - | 37.5 | 12.5 | 12.5 | - | 75.0 | 25.0 | 100.0 |
| Italy | 20.0 | 13.3 | 10.0 | - | 3.3 | - | - | 3.3 | - | 6.7 | - | - | - | - | 30.0 | 13.3 | - | - | 63.3 | 36.7 | 100.0 |
| Oth.Country | 22.2 | 8.9 | 16.7 | 5.6 | - | 1.1 | - | - | - | 1.1 | 1.1 | - | 1.1 | - | 24.4 | 11.1 | 3.3 | 3.3 | 68.9 | 31.1 | 100.0 |
| Total | 22.5 | 11.7 | 8.1 | 2.0 | 0.4 | 0.6 | 1.8 | 0.2 | 5.1 | 2.3 | 1.5 | 0.1 | 3.8 | 0.2 | 23.7 | 8.6 | 4.6 | 2.8 | 71.5 | 28.5 | 100.0 |

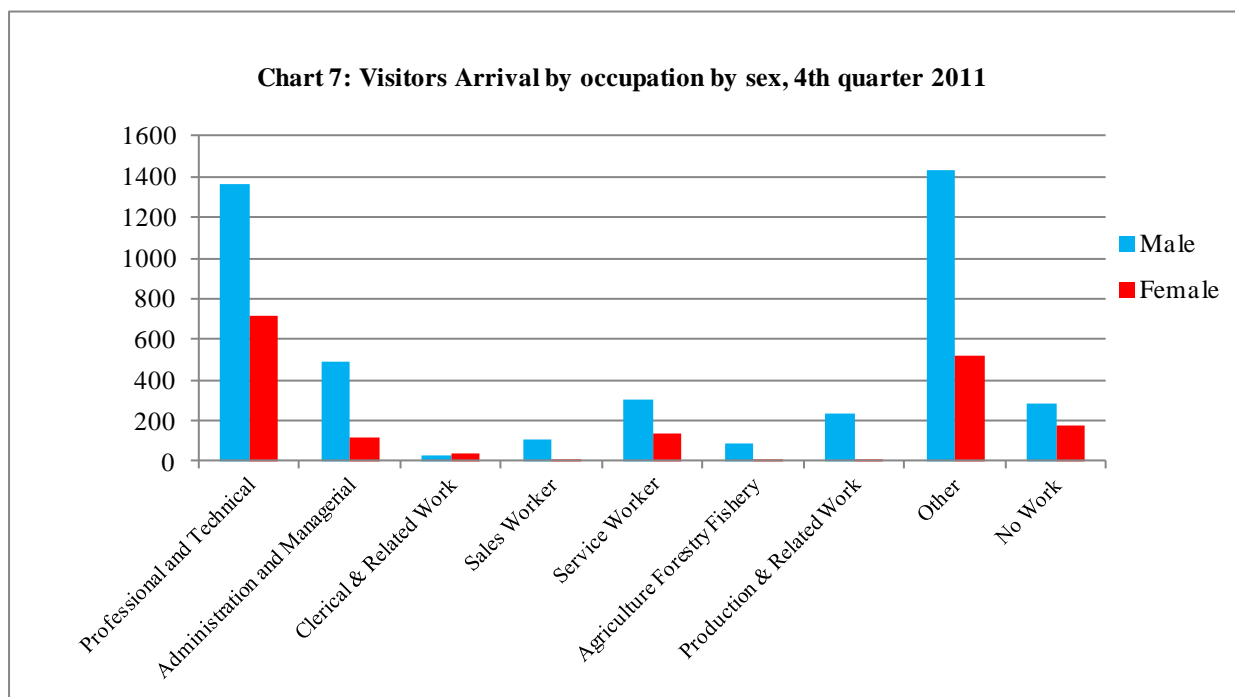
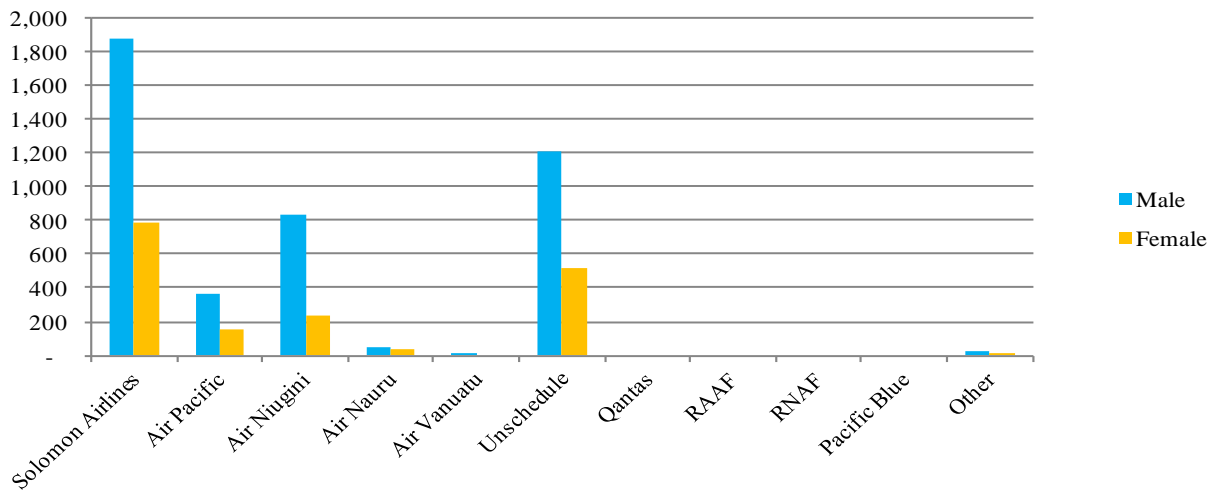


Table 8: Visitor Arrivals by Country of residence by Carrier by Sex: 4th Quarter 2011

| Country of Usual Residence | Solomon Airlines | | Air Pacific | | Air Niugini | | Air Nauru | | Air Vanuatu | | Unschedule | | Qantas | | RAAF | | RNAS | | Pacific Blue | | Other | | Total | | | |
|----------------------------|-------------------|-------------|-------------|------------|-------------|------------|------------|------------|-------------|----------|--------------|------------|----------|----------|----------|----------|----------|----------|--------------|----------|------------|------------|--------------|--------------|--------------|-------|
| | M | F | M | F | M | F | M | F | M | F | M | F | M | F | M | F | M | F | M | F | M | F | M | F | All | |
| | Australia | 1140 | 565 | 13 | 8 | 43 | 9 | 7 | 1 | - | - | 840 | 359 | - | - | - | - | - | - | - | - | 21 | 12 | 2,064 | 954 | 3,018 |
| PNG | 17 | 4 | 12 | 1 | 388 | 106 | - | - | - | - | 10 | 8 | - | - | - | - | - | - | - | - | - | - | 427 | 119 | 546 | |
| US | 59 | 22 | 30 | 20 | 42 | 27 | 1 | - | - | - | 27 | 13 | - | - | - | - | - | - | - | - | - | - | 159 | 82 | 241 | |
| NZ | 146 | 40 | 10 | 4 | 13 | - | 5 | 1 | - | - | 147 | 61 | - | - | - | - | - | - | - | - | - | - | 321 | 106 | 427 | |
| UK | 26 | 20 | 4 | 1 | 8 | 2 | 1 | - | - | - | 20 | 9 | - | - | - | - | - | - | - | - | - | - | 59 | 32 | 91 | |
| Japan | 26 | 8 | 4 | - | 83 | 27 | 1 | - | - | - | 10 | 2 | - | - | - | - | - | - | - | - | - | - | 124 | 37 | 161 | |
| Germany | 5 | 2 | 4 | 3 | 5 | 3 | - | - | - | - | 1 | 2 | - | - | - | - | - | - | - | - | - | - | 15 | 10 | 25 | |
| Canada | 8 | 8 | 6 | 5 | 5 | 2 | - | - | - | - | 15 | 7 | - | - | - | - | - | - | - | - | - | - | 34 | 22 | 56 | |
| Oth.Pacific | 49 | 15 | 23 | 13 | 31 | 11 | 25 | 28 | - | - | 18 | 10 | - | - | - | - | - | - | - | - | - | - | 146 | 77 | 223 | |
| Vanuatu | 10 | 2 | 102 | 49 | 10 | 7 | - | - | - | - | 2 | 3 | - | - | - | - | - | - | - | - | - | - | 124 | 61 | 185 | |
| Hong Kong | 13 | 7 | 12 | 6 | 31 | 3 | - | - | - | - | 9 | 3 | - | - | - | - | - | - | - | - | - | - | 65 | 19 | 84 | |
| Fiji | 31 | 16 | 120 | 38 | 74 | 33 | 2 | - | - | - | 12 | 4 | - | - | - | - | - | - | - | - | - | - | 239 | 91 | 330 | |
| Oth.Asia | 288 | 44 | 12 | 1 | 70 | 4 | 1 | - | - | - | 54 | 10 | - | - | - | - | - | - | - | - | - | - | 425 | 59 | 484 | |
| Netherlands | 5 | 1 | 2 | 2 | 1 | - | - | - | - | - | 1 | 1 | - | - | - | - | - | - | - | - | - | - | 9 | 4 | 13 | |
| Oth.Europe | 21 | 12 | 2 | 1 | 8 | - | - | - | 1 | - | 11 | 5 | - | - | - | - | - | - | - | - | - | - | 43 | 18 | 61 | |
| France | 3 | 2 | 1 | - | 1 | - | - | - | - | - | 1 | - | - | - | - | - | - | - | - | - | - | - | 6 | 2 | 8 | |
| Italy | 10 | 7 | 1 | 2 | 4 | 1 | - | - | - | - | 4 | 1 | - | - | - | - | - | - | - | - | - | - | 19 | 11 | 30 | |
| Oth.Country | 18 | 8 | 2 | 1 | 12 | 5 | - | - | - | - | 30 | 14 | - | - | - | - | - | - | - | - | - | - | 62 | 28 | 90 | |
| Total | 1,875 | 783 | 360 | 155 | 829 | 240 | 43 | 30 | 1 | - | 1,212 | 512 | - | - | - | - | - | - | - | - | 21 | 12 | 4,341 | 1,732 | 6,073 | |
| | Percentage | | | | | | | | | | | | | | | | | | | | | | | | | |
| Australia | 37.8 | 18.7 | 0.4 | 0.3 | 1.4 | 0.3 | 0.2 | - | - | - | 27.8 | 11.9 | - | - | - | - | - | - | - | - | 0.7 | 0.4 | 68.4 | 31.6 | 100.0 | |
| PNG | 3.1 | 0.7 | 2.2 | 0.2 | 71.1 | 19.4 | - | - | - | - | 1.8 | 1.5 | - | - | - | - | - | - | - | - | - | - | 78.2 | 21.8 | 100.0 | |
| US | 24.5 | 9.1 | 12.4 | 8.3 | 17.4 | 11.2 | 0.4 | - | - | - | 11.2 | 5.4 | - | - | - | - | - | - | - | - | - | - | 66.0 | 34.0 | 100.0 | |
| NZ | 34.2 | 9.4 | 2.3 | 0.9 | 3.0 | - | 1.2 | 0.2 | - | - | 34.4 | 14.3 | - | - | - | - | - | - | - | - | - | - | 75.2 | 24.8 | 100.0 | |
| UK | 28.6 | 22.0 | 4.4 | 1.1 | 8.8 | 2.2 | 1.1 | - | - | - | 22.0 | 9.9 | - | - | - | - | - | - | - | - | - | - | 64.8 | 35.2 | 100.0 | |
| Japan | 16.1 | 5.0 | 2.5 | - | 51.6 | 16.8 | 0.6 | - | - | - | 6.2 | 1.2 | - | - | - | - | - | - | - | - | - | - | 77.0 | 23.0 | 100.0 | |
| Germany | 20.0 | 8.0 | 16.0 | 12.0 | 20.0 | 12.0 | - | - | - | - | 4.0 | 8.0 | - | - | - | - | - | - | - | - | - | - | 60.0 | 40.0 | 100.0 | |
| Canada | 14.3 | 14.3 | 10.7 | 8.9 | 8.9 | 3.6 | - | - | - | - | 26.8 | 12.5 | - | - | - | - | - | - | - | - | - | - | 60.7 | 39.3 | 100.0 | |
| Oth.Pacific | 22.0 | 6.7 | 10.3 | 5.8 | 13.9 | 4.9 | 11.2 | 12.6 | - | - | 8.1 | 4.5 | - | - | - | - | - | - | - | - | - | - | 65.5 | 34.5 | 100.0 | |
| Vanuatu | 5.4 | 1.1 | 55.1 | 26.5 | 5.4 | 3.8 | - | - | - | - | 1.1 | 1.6 | - | - | - | - | - | - | - | - | - | - | 67.0 | 33.0 | 100.0 | |
| Hong Kong | 15.5 | 8.3 | 14.3 | 7.1 | 36.9 | 3.6 | - | - | - | - | 10.7 | 3.6 | - | - | - | - | - | - | - | - | - | - | 77.4 | 22.6 | 100.0 | |
| Fiji | 9.4 | 4.8 | 36.4 | 11.5 | 22.4 | 10.0 | 0.6 | - | - | - | 3.6 | 1.2 | - | - | - | - | - | - | - | - | - | - | 72.4 | 27.6 | 100.0 | |
| Oth.Asia | 59.5 | 9.1 | 2.5 | 0.2 | 14.5 | 0.8 | 0.2 | - | - | - | 11.2 | 2.1 | - | - | - | - | - | - | - | - | - | - | 87.8 | 12.2 | 100.0 | |
| Netherlands | 38.5 | 7.7 | 15.4 | 15.4 | 7.7 | - | - | - | - | - | 7.7 | 7.7 | - | - | - | - | - | - | - | - | - | - | 69.2 | 30.8 | 100.0 | |
| Oth.Europe | 34.4 | 19.7 | 3.3 | 1.6 | 13.1 | - | - | - | 1.6 | - | 18.0 | 8.2 | - | - | - | - | - | - | - | - | - | - | 70.5 | 29.5 | 100.0 | |
| France | 37.5 | 25.0 | 12.5 | - | 12.5 | - | - | - | - | - | 12.5 | - | - | - | - | - | - | - | - | - | - | - | 75.0 | 25.0 | 100.0 | |
| Italy | 33.3 | 23.3 | 3.3 | 6.7 | 13.3 | 3.3 | - | - | - | - | 13.3 | 3.3 | - | - | - | - | - | - | - | - | - | - | 63.3 | 36.7 | 100.0 | |
| Oth.Country | 20.0 | 8.9 | 2.2 | 1.1 | 13.3 | 5.6 | - | - | - | - | 33.3 | 15.6 | - | - | - | - | - | - | - | - | - | - | 68.9 | 31.1 | 100.0 | |
| Total | 30.9 | 12.9 | 5.9 | 2.6 | 13.7 | 4.0 | 0.7 | 0.5 | - | - | 20.0 | 8.4 | - | - | - | - | - | - | - | - | 0.3 | 0.2 | 71.5 | 28.5 | 100.0 | |

Chart 8: Visitor Arrivals by Carrier by Sex, 4th quarter 2011



Appendix 1

Concepts and Definitions

Persons entering Solomon Islands classify themselves into three (3) categories; returning resident, intending resident, and visitor. The concepts and definitions of the various categories are as follows:

(i) *Returning residents*

- Solomon Islanders and non-Solomon Islanders who have left the country and are returning to continue their residence.
- Non Solomon Islanders includes resident permit holders and Diplomatic officials, and their immediate family members. This may also includes legal or official arrangements that fall out side of the above.

(ii) *Intending residents*

- Non-Solomon Islander who wish to take up residence in Solomon Islands.

(iii) *Visitors*

- Any traveller who is not a Solomon Islander and who purposely spend less time – at most a period of 120 days², in the country and with the intention and purpose of visiting.
- *Tourist*
 - Visitors who further classify themselves stating their visit are purposely for '*holiday and vacation*'. This exclude, tourist arrivals by cruise ships.
 - Wife accompanying husband on business purpose is a private tourist unless also working.
 - *World Tourism Organization WTO definition of Tourism:*
*It comprises the activities of persons travelling to and staying in places outside their usual environment for not more than a year for leisure, business and other purposes not related to the exercise of an activity remunerated from within the place visited*³.

(iv) *Markets*

- *Country of Usual Residence*

² Solomon Islands 1993 Statistical Yearbook.

³ Dimensions of Hospitality, Study guide 1. p17

Appendix 2

Table 9: Intending Resident Arrivals by Country of Residence by Occupation and Sex: 4th Quarter 2011

| Country of Usual Residence | Professional and Technical | | Administration and Managerial | | Clerical & Related Work | | Sales Worker | | Service Worker | | Agriculture Forestry Fishery | | Production & Related Work | | Other | | No Work | | Total | | |
|----------------------------|----------------------------|------------|-------------------------------|------------|-------------------------|------------|--------------|------------|----------------|------------|------------------------------|------------|---------------------------|------------|-------------|------------|------------|------------|-------------|-------------|--------------|
| | M | F | M | F | M | F | M | F | M | F | M | F | M | F | M | F | M | F | M | F | All |
| Australia | 35 | 20 | 22 | 8 | - | 2 | - | - | 96 | 18 | 3 | - | 5 | - | 85 | 47 | 14 | 12 | 260 | 107 | 367 |
| PNG | 9 | 7 | 4 | - | 1 | - | - | - | 5 | 5 | 1 | - | 2 | - | 13 | 4 | 4 | 1 | 39 | 17 | 56 |
| US | 4 | 3 | - | - | - | - | - | - | - | - | - | - | - | - | 5 | 3 | 2 | - | 11 | 6 | 17 |
| NZ | 9 | 8 | 3 | - | - | - | - | - | 13 | 3 | - | - | - | - | 11 | 11 | 2 | 5 | 38 | 27 | 65 |
| UK | 1 | 1 | 2 | 1 | - | - | - | - | - | - | - | - | 1 | - | 3 | 3 | - | 1 | 7 | 6 | 13 |
| Japan | 4 | - | - | - | - | - | - | - | - | - | - | - | - | - | 5 | 1 | 2 | 1 | 11 | 2 | 13 |
| Germany | - | - | - | - | - | - | - | - | - | - | - | - | - | - | - | - | - | - | - | - | - |
| Canada | 1 | - | - | - | - | - | - | - | - | - | - | - | - | - | 3 | - | - | - | 4 | - | 4 |
| Oth.Pacific | 5 | 2 | - | 2 | - | - | - | - | 47 | 10 | - | - | - | - | 4 | 5 | 6 | 2 | 62 | 21 | 83 |
| Vanuatu | 5 | 2 | - | - | - | 1 | - | - | 4 | 2 | - | - | - | - | 1 | 2 | 1 | 2 | 11 | 9 | 20 |
| Hong Kong | 4 | 1 | 13 | 5 | - | 1 | 11 | - | 4 | 4 | 1 | 1 | 2 | - | 16 | 4 | 12 | 3 | 63 | 19 | 82 |
| Fiji | 9 | 8 | 1 | - | - | 2 | - | - | 7 | 2 | 3 | - | - | - | 2 | 2 | 2 | - | 24 | 14 | 38 |
| Oth.Asia | 18 | 8 | 33 | 11 | 1 | 2 | 14 | 1 | 2 | 2 | 10 | - | 34 | 1 | 108 | 5 | 30 | 3 | 250 | 33 | 283 |
| Netherlands | 2 | - | - | - | - | - | - | - | - | - | - | - | - | - | 1 | - | - | - | 3 | - | 3 |
| Oth.Europe | 1 | - | - | - | - | - | - | - | 1 | - | - | - | - | - | 1 | - | 1 | - | 4 | - | 4 |
| France | 1 | - | - | - | - | - | - | - | - | - | - | - | - | - | - | - | - | - | 1 | - | 1 |
| Italy | - | - | - | - | - | - | - | - | - | - | - | - | - | - | - | - | 1 | - | 1 | - | 1 |
| Oth.Country | 7 | 1 | 2 | - | - | - | - | - | - | 2 | - | - | - | - | 4 | 2 | 3 | 2 | 16 | 7 | 23 |
| Total | 115 | 61 | 80 | 27 | 2 | 8 | 25 | 1 | 179 | 48 | 18 | 1 | 44 | 1 | 262 | 89 | 80 | 32 | 805 | 268 | 1073 |
| | Percentage | | | | | | | | | | | | | | | | | | | | |
| Australia | 9.5 | 5.4 | 6.0 | 2.2 | - | 0.5 | - | - | 26.2 | 4.9 | 0.8 | - | 1.4 | - | 23.2 | 12.8 | 3.8 | 3.3 | 70.8 | 29.2 | 100.0 |
| PNG | 16.1 | 12.5 | 7.1 | - | 1.8 | - | - | - | 8.9 | 8.9 | 1.8 | - | 3.6 | - | 23.2 | 7.1 | 7.1 | 1.8 | 69.6 | 30.4 | 100.0 |
| US | 23.5 | 17.6 | 0.0 | - | - | - | - | - | - | - | - | - | - | - | 29.4 | 17.6 | 11.8 | 0.0 | 64.7 | 35.3 | 100.0 |
| NZ | 13.8 | 12.3 | 4.6 | - | - | - | - | - | 20.0 | 4.6 | - | - | - | - | 16.9 | 16.9 | 3.1 | 7.7 | 58.5 | 41.5 | 100.0 |
| UK | 7.7 | 7.7 | 15.4 | 7.7 | - | - | - | - | - | - | - | - | 7.7 | - | 23.1 | 23.1 | - | 7.7 | 53.8 | 46.2 | 100.0 |
| Japan | 30.8 | - | - | - | - | - | - | - | - | - | - | - | - | - | 38.5 | 7.7 | 15.4 | 7.7 | 84.6 | 15.4 | 100.0 |
| Germany | - | - | - | - | - | - | - | - | - | - | - | - | - | - | - | - | - | - | - | - | - |
| Canada | 25.0 | - | - | - | - | - | - | - | - | - | - | - | - | - | 75.0 | - | - | - | 100.0 | - | 100.0 |
| Oth.Pacific | 6.0 | 2.4 | - | 2.4 | - | - | - | - | 56.6 | 12.0 | - | - | - | - | 4.8 | 6.0 | 7.2 | 2.4 | 74.7 | 25.3 | 100.0 |
| Vanuatu | 25.0 | 10.0 | - | - | - | 5.0 | - | - | 20.0 | 10.0 | - | - | - | - | 5.0 | 10.0 | 5.0 | 10.0 | 55.0 | 45.0 | 100.0 |
| Hong Kong | - | - | - | - | - | - | - | - | - | - | - | - | - | - | - | - | - | - | - | - | - |
| Fiji | 23.7 | 21.1 | 2.6 | - | - | 5.3 | - | - | 18.4 | 5.3 | 7.9 | - | - | - | 5.3 | 5.3 | 5.3 | - | 63.2 | 36.8 | 100.0 |
| Oth.Asia | 6.4 | 2.8 | 11.7 | 3.9 | 0.4 | 0.7 | 4.9 | 0.4 | 0.7 | 0.7 | 3.5 | - | 12.0 | 0.4 | 38.2 | 1.8 | 10.6 | 1.1 | 88.3 | 11.7 | 100.0 |
| Netherlands | - | - | - | - | - | - | - | - | - | - | - | - | - | - | - | - | - | - | - | - | - |
| Oth.Europe | 25.0 | - | - | - | - | - | - | - | 25.0 | - | - | - | - | - | 25.0 | - | 25.0 | - | 100.0 | - | 100.0 |
| France | - | - | - | - | - | - | - | - | - | - | - | - | - | - | - | - | - | - | - | - | - |
| Italy | - | - | - | - | - | - | - | - | - | - | - | - | - | - | - | - | 100.0 | - | 100.0 | - | 100.0 |
| Oth.Country | 30.4 | 4.3 | 8.7 | - | - | - | - | - | - | 8.7 | - | - | - | - | 17.4 | 8.7 | 13.0 | 8.7 | 69.6 | 30.4 | 100.0 |
| Total | 10.7 | 5.7 | 7.5 | 2.5 | 0.2 | 0.7 | 2.3 | 0.1 | 16.7 | 4.5 | 1.7 | 0.1 | 4.1 | 0.1 | 24.4 | 8.3 | 7.5 | 3.0 | 75.0 | 25.0 | 100.0 |

Table 10: Intending Resident Arrivals by Country of Residence by Age Groups by Sex: 4th Quarter 2011

| Country of Usual Residence | Age-Group | | | | | | | | | | | | | | | | | | Total | | |
|----------------------------|-------------------|-----|-------|-----|-------|------|-------|------|-------|------|-------|------|-------|-----|------------|------|-------|------|-------|--|--|
| | 0-14 | | 15-24 | | 25-34 | | 35-44 | | 45-54 | | 55-64 | | 65+ | | Not Stated | | M | F | All | | |
| | M | F | M | F | M | F | M | F | M | F | M | F | M | F | | | | | | | |
| Australia | 14 | 7 | 34 | 5 | 58 | 26 | 56 | 26 | 51 | 25 | 28 | 8 | 4 | 1 | 15 | 9 | 260 | 107 | 367 | | |
| PNG | 4 | 4 | - | 3 | 8 | 4 | 12 | 3 | 9 | 1 | 1 | 1 | 1 | - | 4 | 1 | 39 | 17 | 56 | | |
| US | 3 | 1 | - | - | - | - | 2 | 2 | 2 | - | - | 1 | 2 | 1 | 2 | 1 | 11 | 6 | 17 | | |
| NZ | 2 | 6 | 1 | 1 | 4 | 2 | 12 | 5 | 7 | 3 | 8 | 8 | 1 | - | 3 | 2 | 38 | 27 | 65 | | |
| UK | - | 1 | - | - | 2 | 1 | 1 | 1 | 3 | 2 | 1 | 1 | - | - | - | - | 7 | 6 | 13 | | |
| Japan | - | - | - | - | 2 | - | 3 | 1 | 1 | 1 | 3 | - | 1 | - | 1 | - | 11 | 2 | 13 | | |
| Germany | - | - | - | - | - | - | - | - | - | - | - | - | - | - | - | - | - | - | - | | |
| Canada | 1 | - | - | - | - | - | - | - | 2 | - | 1 | - | - | - | - | - | 4 | - | 4 | | |
| Oth.Pacific | 5 | 2 | 14 | 7 | 24 | 5 | 13 | 5 | 4 | 2 | 1 | - | - | - | 1 | - | 62 | 21 | 83 | | |
| Vanuatu | 2 | 1 | 1 | - | 1 | 2 | 4 | 2 | 2 | 1 | 1 | 1 | - | - | - | 2 | 11 | 9 | 20 | | |
| Hong Kong | - | - | 19 | 7 | 19 | 5 | 12 | 4 | 6 | 1 | 4 | 2 | - | - | 3 | - | 63 | 19 | 82 | | |
| Fiji | 4 | - | 4 | 2 | 6 | 6 | 2 | 3 | 5 | 3 | 3 | - | - | - | - | - | 24 | 14 | 38 | | |
| Oth.Asia | 3 | 1 | 10 | 2 | 36 | 10 | 82 | 8 | 76 | 5 | 27 | 3 | 1 | - | 15 | 4 | 250 | 33 | 283 | | |
| Netherlands | - | - | - | - | - | - | 2 | - | - | - | - | - | 1 | - | - | - | 3 | - | 3 | | |
| Oth.Europe | - | - | - | - | 1 | - | 1 | - | - | - | 1 | - | - | - | 1 | - | 4 | - | 4 | | |
| France | - | - | - | - | 1 | - | - | - | - | - | - | - | - | - | - | - | 1 | - | 1 | | |
| Italy | - | - | - | - | - | - | - | - | - | - | - | - | 1 | - | - | - | 1 | - | 1 | | |
| Oth.Country | 2 | 1 | - | 1 | 4 | 3 | 4 | 2 | 3 | - | 2 | - | - | - | 1 | - | 16 | 7 | 23 | | |
| Total | 40 | 24 | 83 | 28 | 166 | 64 | 206 | 62 | 171 | 44 | 81 | 25 | 12 | 2 | 46 | 19 | 805 | 268 | 1,073 | | |
| | <u>Percentage</u> | | | | | | | | | | | | | | | | | | | | |
| Australia | 3.8 | 1.9 | 9.3 | 1.4 | 15.8 | 7.1 | 15.3 | 7.1 | 13.9 | 6.8 | 7.6 | 2.2 | 1.1 | 0.3 | 4.1 | 2.5 | 70.8 | 29.2 | 100.0 | | |
| PNG | 7.1 | 7.1 | - | 5.4 | 14.3 | 7.1 | 21.4 | 5.4 | 16.1 | 1.8 | 1.8 | 1.8 | 1.8 | - | 7.1 | 1.8 | 69.6 | 30.4 | 100.0 | | |
| US | 17.6 | 5.9 | - | - | - | - | 11.8 | 11.8 | 11.8 | - | - | 5.9 | 11.8 | 5.9 | 11.8 | 5.9 | 64.7 | 35.3 | 100.0 | | |
| NZ | 3.1 | 9.2 | 1.5 | 1.5 | 6.2 | 3.1 | 18.5 | 7.7 | 10.8 | 4.6 | 12.3 | 12.3 | 1.5 | - | 4.6 | 3.1 | 58.5 | 41.5 | 100.0 | | |
| UK | - | 7.7 | - | - | 15.4 | 7.7 | 7.7 | 7.7 | 23.1 | 15.4 | 7.7 | 7.7 | - | - | - | - | 53.8 | 46.2 | 100.0 | | |
| Japan | - | - | - | - | 15.4 | - | 23.1 | 7.7 | 7.7 | 7.7 | 23.1 | - | 7.7 | - | 7.7 | - | 84.6 | 15.4 | 100.0 | | |
| Germany | - | - | - | - | - | - | - | - | - | - | - | - | - | - | - | - | - | - | - | | |
| Canada | 25.0 | - | - | - | - | - | - | - | 50.0 | - | 25.0 | - | - | - | - | - | 100.0 | - | 100.0 | | |
| Oth.Pacific | 6.0 | 2.4 | 16.9 | 8.4 | 28.9 | 6.0 | 15.7 | 6.0 | 4.8 | 2.4 | 1.2 | - | - | - | 1.2 | - | 74.7 | 25.3 | 100.0 | | |
| Vanuatu | 10.0 | 5.0 | 5.0 | - | 5.0 | 10.0 | 20.0 | 10.0 | 10.0 | 5.0 | 5.0 | 5.0 | - | - | - | 10.0 | 55.0 | 45.0 | 100.0 | | |
| Hong Kong | - | - | - | - | - | - | - | - | - | - | - | - | - | - | - | - | - | - | - | | |
| Fiji | 10.5 | - | 10.5 | 5.3 | 15.8 | 15.8 | 5.3 | 7.9 | 13.2 | 7.9 | 7.9 | - | - | - | - | - | 63.2 | 36.8 | 100.0 | | |
| Oth.Asia | 1.1 | 0.4 | 3.5 | 0.7 | 12.7 | 3.5 | 29.0 | 2.8 | 26.9 | 1.8 | 9.5 | 1.1 | 0.4 | - | 5.3 | 1.4 | 88.3 | 11.7 | 100.0 | | |
| Netherlands | - | - | - | - | - | - | - | - | - | - | - | - | - | - | - | - | - | - | - | | |
| Oth.Europe | - | - | - | - | 25.0 | - | 25.0 | - | - | - | 25.0 | - | - | - | 25.0 | - | 100.0 | - | 100.0 | | |
| France | - | - | - | - | - | - | - | - | - | - | - | - | - | - | - | - | - | - | - | | |
| Italy | - | - | - | - | - | - | - | - | - | - | - | - | 100.0 | - | - | - | 100.0 | - | 100.0 | | |
| Oth.Country | 8.7 | 4.3 | - | 4.3 | 17.4 | 13.0 | 17.4 | 8.7 | 13.0 | - | 8.7 | - | - | - | 4.3 | - | 69.6 | 30.4 | 100.0 | | |
| Total | 3.7 | 2.2 | 7.7 | 2.6 | 15.5 | 6.0 | 19.2 | 5.8 | 15.9 | 4.1 | 7.5 | 2.3 | 1.1 | 0.2 | 4.3 | 1.8 | 75.0 | 25.0 | 100.0 | | |

Table 11: Returning Resident Arrivals by Country of Residence by Age Groups by Sex: 4th Quarter 2011

| Country of Usual Residence | Age-Group | | | | | | | | | | | | | | | | | | Total | | |
|----------------------------|-----------|-----|-------|-----|-------|------|-------|-----|-------|-----|-------|-----|-----|-----|------------|-----|-------|-------|-------|--|--|
| | 0-14 | | 15-24 | | 25-34 | | 35-44 | | 45-54 | | 55-64 | | 65+ | | Not Stated | | M | F | All | | |
| | M | F | M | F | M | F | M | F | M | F | M | F | M | F | M | F | M | F | All | | |
| Australia | - | - | - | - | - | - | - | - | - | - | - | - | - | - | - | - | - | - | - | | |
| PNG | - | - | - | - | - | - | - | - | - | - | - | - | - | - | - | - | - | - | - | | |
| US | - | - | - | - | - | - | - | - | - | - | 1 | - | - | - | - | - | 1 | - | 1 | | |
| NZ | - | - | - | - | - | - | - | - | - | - | - | - | - | - | - | - | - | - | - | | |
| UK | - | - | - | - | - | - | - | - | - | - | - | - | - | - | - | - | - | - | - | | |
| Japan | 1 | - | - | - | - | 1 | - | - | 2 | - | - | - | - | - | - | - | 3 | 1 | 4 | | |
| Germany | - | - | - | - | - | - | - | - | - | - | - | - | - | - | - | - | - | - | - | | |
| Canada | - | - | - | - | - | - | - | - | - | - | - | - | - | - | - | - | - | - | - | | |
| Oth.Pacific | - | - | - | - | - | - | - | - | - | - | - | - | - | - | - | - | - | - | - | | |
| Vanuatu | - | - | - | - | - | - | - | - | - | - | - | - | - | - | - | - | - | - | - | | |
| Hong Kong | - | - | - | - | - | - | - | - | - | - | - | - | - | - | - | - | - | - | - | | |
| Fiji | - | - | - | - | - | - | - | - | - | - | - | - | - | - | - | - | - | - | - | | |
| Oth.Asia | - | - | - | - | - | - | - | - | - | - | - | - | - | - | - | - | - | - | - | | |
| Netherlands | - | - | - | - | - | - | - | - | - | - | - | - | - | - | - | - | - | - | - | | |
| Oth.Europe | - | - | - | - | - | - | - | - | - | - | - | - | - | - | - | - | - | - | - | | |
| France | - | - | - | - | - | - | - | - | - | - | - | - | - | - | - | - | - | - | - | | |
| Italy | - | - | - | - | - | - | - | - | - | - | - | - | - | - | - | - | - | - | - | | |
| Oth.Country | - | - | - | - | - | - | 1 | - | - | - | - | - | - | - | - | - | - | 1 | 1 | | |
| Solomon Is. | 153 | 140 | 626 | 425 | 881 | 404 | 691 | 363 | 476 | 198 | 217 | 88 | 76 | 20 | 177 | 127 | 3,297 | 1,765 | 5,062 | | |
| Total | 154 | 140 | 626 | 425 | 881 | 405 | 691 | 364 | 478 | 198 | 218 | 88 | 76 | 20 | 177 | 127 | 3,301 | 1,767 | 5,068 | | |
| <u>Percentage</u> | | | | | | | | | | | | | | | | | | | | | |
| Australia | - | - | - | - | - | - | - | - | - | - | - | - | - | - | - | - | - | - | - | | |
| PNG | - | - | - | - | - | - | - | - | - | - | - | - | - | - | - | - | - | - | - | | |
| US | - | - | - | - | - | - | - | - | - | - | 100.0 | - | - | - | - | - | 100.0 | - | 100.0 | | |
| NZ | - | - | - | - | - | - | - | - | - | - | - | - | - | - | - | - | - | - | - | | |
| UK | - | - | - | - | - | - | - | - | - | - | - | - | - | - | - | - | - | - | - | | |
| Japan | 25.0 | - | - | - | - | 25.0 | - | - | 50.0 | - | - | - | - | - | - | - | 75.0 | 25.0 | 100.0 | | |
| Germany | - | - | - | - | - | - | - | - | - | - | - | - | - | - | - | - | - | - | - | | |
| Canada | - | - | - | - | - | - | - | - | - | - | - | - | - | - | - | - | - | - | - | | |
| Oth.Pacific | - | - | - | - | - | - | - | - | - | - | - | - | - | - | - | - | - | - | - | | |
| Vanuatu | - | - | - | - | - | - | - | - | - | - | - | - | - | - | - | - | - | - | - | | |
| Hong Kong | - | - | - | - | - | - | - | - | - | - | - | - | - | - | - | - | - | - | - | | |
| Fiji | - | - | - | - | - | - | - | - | - | - | - | - | - | - | - | - | - | - | - | | |
| Oth.Asia | - | - | - | - | - | - | - | - | - | - | - | - | - | - | - | - | - | - | - | | |
| Netherlands | - | - | - | - | - | - | - | - | - | - | - | - | - | - | - | - | - | - | - | | |
| Oth.Europe | - | - | - | - | - | - | - | - | - | - | - | - | - | - | - | - | - | - | - | | |
| France | - | - | - | - | - | - | - | - | - | - | - | - | - | - | - | - | - | - | - | | |
| Italy | - | - | - | - | - | - | - | - | - | - | - | - | - | - | - | - | - | - | - | | |
| Oth.Country | - | - | - | - | - | - | 100.0 | - | - | - | - | - | - | - | - | - | - | 100.0 | 100.0 | | |
| Solomon Is. | 3.0 | 2.8 | 12.4 | 8.4 | 17.4 | 8.0 | 13.7 | 7.2 | 9.4 | 3.9 | 4.3 | 1.7 | 1.5 | 0.4 | 3.5 | 2.5 | 65.1 | 34.9 | 100.0 | | |
| Total | 3.0 | 2.8 | 12.4 | 8.4 | 17.4 | 8.0 | 13.6 | 7.2 | 9.4 | 3.9 | 4.3 | 1.7 | 1.5 | 0.4 | 3.5 | 2.5 | 65.1 | 34.9 | 100.0 | | |

Table 12: Returning Resident Arrivals by Country of Residence by Occupation and Sex: 4th Quarter 2011

| Country of Usual Residence | Professional and Technical | | Administration and Managerial | | Clerical & Related Work | | Sales Worker | | Service Worker | | Agriculture Forestry Fishery | | Production & Related Work | | Other | | No Work | | Total | | All |
|----------------------------|----------------------------|------|-------------------------------|-----|-------------------------|-----|--------------|-----|----------------|-----|------------------------------|-----|---------------------------|-----|-------|------|---------|-------|-------|-------|-------|
| | M | F | M | F | M | F | M | F | M | F | M | F | M | F | M | F | M | F | M | F | |
| | Australia | - | - | - | - | - | - | - | - | - | - | - | - | - | - | - | - | - | - | - | |
| PNG | - | - | - | - | - | - | - | - | - | - | - | - | - | - | - | - | - | - | - | - | - |
| US | - | - | - | - | - | - | - | - | - | - | - | - | - | - | 1 | - | - | - | 1 | - | 1 |
| NZ | - | - | - | - | - | - | - | - | - | - | - | - | - | - | - | - | - | - | - | - | - |
| UK | - | - | - | - | - | - | - | - | - | - | - | - | - | - | - | - | - | - | - | - | - |
| Japan | 2 | - | - | - | - | - | - | - | - | - | - | - | - | - | 1 | 1 | - | - | 3 | 1 | 4 |
| Germany | - | - | - | - | - | - | - | - | - | - | - | - | - | - | - | - | - | - | - | - | - |
| Canada | - | - | - | - | - | - | - | - | - | - | - | - | - | - | - | - | - | - | - | - | - |
| Oth.Pacific | - | - | - | - | - | - | - | - | - | - | - | - | - | - | - | - | - | - | - | - | - |
| Vanuatu | - | - | - | - | - | - | - | - | - | - | - | - | - | - | - | - | - | - | - | - | - |
| Hong Kong | - | - | - | - | - | - | - | - | - | - | - | - | - | - | - | - | - | - | - | - | - |
| Fiji | - | - | - | - | - | - | - | - | - | - | - | - | - | - | - | - | - | - | - | - | - |
| Oth.Asia | - | - | - | - | - | - | - | - | - | - | - | - | - | - | - | - | - | - | - | - | - |
| Netherlands | - | - | - | - | - | - | - | - | - | - | - | - | - | - | - | - | - | - | - | - | - |
| Oth.Europe | - | - | - | - | - | - | - | - | - | - | - | - | - | - | - | - | - | - | - | - | - |
| France | - | - | - | - | - | - | - | - | - | - | - | - | - | - | - | - | - | - | - | - | - |
| Italy | - | - | - | - | - | - | - | - | - | - | - | - | - | - | - | - | - | - | - | - | - |
| Oth.Country | - | - | - | - | - | - | - | - | - | - | - | - | - | - | - | - | - | 1 | - | 1 | 1 |
| Solomon Is. | 1767 | 839 | 246 | 100 | 32 | 33 | 51 | 15 | 52 | 214 | 39 | 9 | 75 | 6 | 859 | 372 | 176 | 177 | 3,297 | 1,765 | 5,062 |
| Total | 1769 | 839 | 246 | 100 | 32 | 33 | 51 | 15 | 52 | 214 | 39 | 9 | 75 | 6 | 861 | 373 | 176 | 178 | 3,301 | 1,767 | 5,068 |
| <u>Percentage</u> | | | | | | | | | | | | | | | | | | | | | |
| Australia | - | - | - | - | - | - | - | - | - | - | - | - | - | - | - | - | - | - | - | - | - |
| PNG | - | - | - | - | - | - | - | - | - | - | - | - | - | - | - | - | - | - | - | - | - |
| US | - | - | - | - | - | - | - | - | - | - | - | - | - | - | 100.0 | - | - | - | 100.0 | - | 100.0 |
| NZ | - | - | - | - | - | - | - | - | - | - | - | - | - | - | - | - | - | - | - | - | - |
| UK | - | - | - | - | - | - | - | - | - | - | - | - | - | - | - | - | - | - | - | - | - |
| Japan | 50.0 | - | - | - | - | - | - | - | - | - | - | - | - | - | 25.0 | 25.0 | - | - | 75.0 | 25.0 | 100.0 |
| Germany | - | - | - | - | - | - | - | - | - | - | - | - | - | - | - | - | - | - | - | - | - |
| Canada | - | - | - | - | - | - | - | - | - | - | - | - | - | - | - | - | - | - | - | - | - |
| Oth.Pacific | - | - | - | - | - | - | - | - | - | - | - | - | - | - | - | - | - | - | - | - | - |
| Vanuatu | - | - | - | - | - | - | - | - | - | - | - | - | - | - | - | - | - | - | - | - | - |
| Hong Kong | - | - | - | - | - | - | - | - | - | - | - | - | - | - | - | - | - | - | - | - | - |
| Fiji | - | - | - | - | - | - | - | - | - | - | - | - | - | - | - | - | - | - | - | - | - |
| Oth.Asia | - | - | - | - | - | - | - | - | - | - | - | - | - | - | - | - | - | - | - | - | - |
| Netherlands | - | - | - | - | - | - | - | - | - | - | - | - | - | - | - | - | - | - | - | - | - |
| Oth.Europe | - | - | - | - | - | - | - | - | - | - | - | - | - | - | - | - | - | - | - | - | - |
| France | - | - | - | - | - | - | - | - | - | - | - | - | - | - | - | - | - | - | - | - | - |
| Italy | - | - | - | - | - | - | - | - | - | - | - | - | - | - | - | - | - | - | - | - | - |
| Oth.Country | - | - | - | - | - | - | - | - | - | - | - | - | - | - | - | - | - | 100.0 | - | 100.0 | 100.0 |
| Solomon Is. | 34.9 | 16.6 | 4.9 | 2.0 | 0.6 | 0.7 | 1.0 | 0.3 | 1.0 | 4.2 | 0.8 | 0.2 | 1.5 | 0.1 | 17.0 | 7.3 | 3.5 | 3.5 | 65.1 | 34.9 | 100.0 |
| Total | 34.9 | 16.6 | 4.9 | 2.0 | 0.6 | 0.7 | 1.0 | 0.3 | 1.0 | 4.2 | 0.8 | 0.2 | 1.5 | 0.1 | 17.0 | 7.4 | 3.5 | 3.5 | 65.1 | 34.9 | 100.0 |